

General Information This indexing mechanism is designed to accommodate wafer strut centre dimensions:-
39.7 (1.562")
29.4 (1.156")
26.2 (1.031")

Index Mechanism. The 'U' and 'UB' mechanism low friction cam and plungers ensure a smooth positive indexing action. Balanced pressure springs provide consistent and readily reproducible torque values which can be approximated as
Light Not greater than 0,14Nm. (20oz.in.)
Medium Greater than 0,14 Nm. but not more than 0,28 Nm. (40 oz.ins.)
Heavy Greater than 0.28Nm.

The mechanism is also available with panel and spindle seals allowing sealing to 1cm³/hr.

Indexing. 10°, 15°, 20°, 30°, 45° or 60° indexing is available for the wafers listed below.

MODEL	ML	MM	MK	HC	FC	MSD
10°	●					
15°		●				
20°	●					
30°		●	●	●	●	●
45°		●				
60°		●	●	●	●	●

Finish. Index Springs, Stainless steel: other metal parts, passivated zinc plated.

Mounting Details. Imperial (standard).

Metric (alternative)

Bush 3/8" x 32TPI (Whit.)

M10 x 0.75.

Shaft 0.25" dia.

6mm, dia.

Nut 0.525" A/F.

14mm A/F.

The alternative is optional in each case.

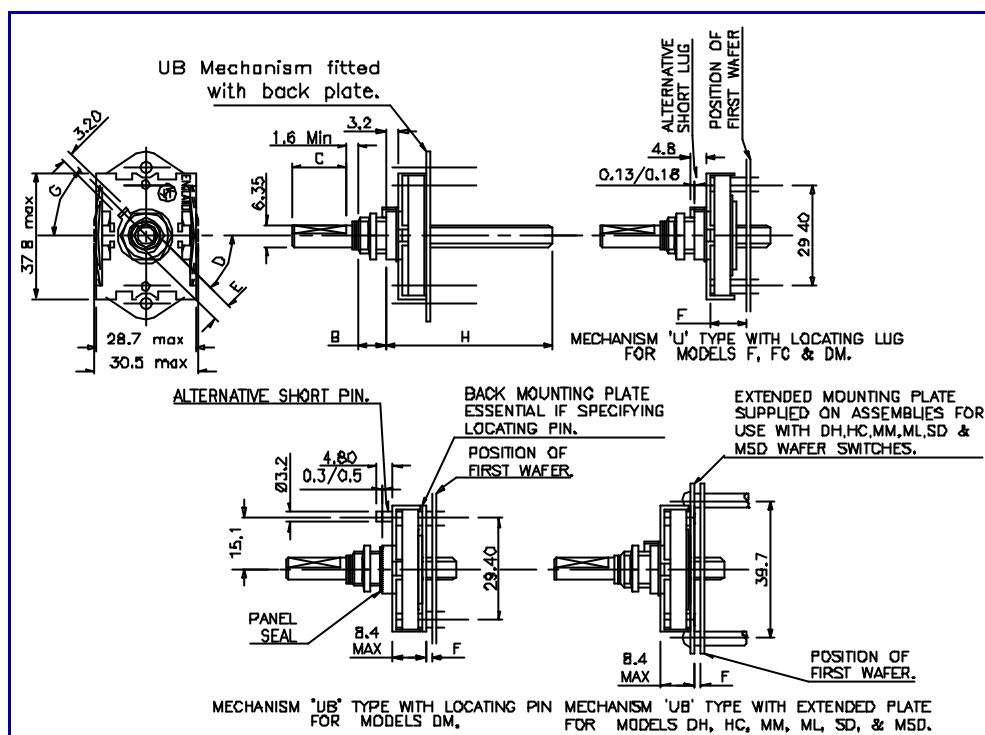
Unless otherwise specified, each switch is supplied with an internal tooth steel lock washer.

Panel and spindle seals to RCL224 are also available.

If required a 3,2mm (0.125") wide panel locating lug on 9,5 (0.375") PCR, or (except on model FC) a 3,2mm (0.125") locating pin on a 15,1mm (0.593")

PCR can be used. These are supplied in two different lengths for sealed and unsealed switches.

For sealed switches mounted on thin gauge panels, a panel locating plate Nato No.



Dimensions Are In Millimetres

Key To Details

- A. Shaft length: optional ± 0.40 (0.016")
- B. Bushing thread length: preferred standard 9.5 (0.375"); 6.35 (0.250") available as an alternative. Special lengths if necessary
- C. Flat length: length to specification. Tolerance ± 0.40 (0.016"). Special shaft termination's may be provided to special requirements.
- D. Angle of flat: to specification $\pm 2^\circ$; specify position of flat, with switch shaft in **fully anti-clockwise** position when viewed from front or knob end.
- E. Flat thickness: standard 5.55 ± 0.15 (0.218" ± 0.005 ") for grub screws; 4.95 ± 0.05 (0.195" ± 0.002 ") for push-on knobs.
- F. First spacer. min. dimensions. (SEE TABLE)
- G. Angle of locating lug: Available angles 45° , 135° , 225° or 315° from horizontal centre line..
- H. Rear shaft. To specification ± 0.8 (0.031")

MOD-ELS	FRONT	REAR	NOTES
MK.	4,8 (0.187")	3,2 (0.125")	With locating lug and back mounting plate.
MK FC.	12,7 (0.500")	11,1 (0.437")	With locating lug.
HC, MSD	7,93 (0.312") 4,80 (0.187")	3,20 (0.125") 3,20 (0.125")	With locating lug or pin and back mounting plate fitted.
MM, ML.	4,8 (0.187")	1,6 (0.062)	

WAFER	CENTRES
MM, ML, MSD.	39,7 (1.562")
MK	29,4 (1.156")
FC.	26,2 (1.031")