

ALESIS

MultiMix8 FireWire

Quick Start Owner's Manual (ENGLISH)

BOX CONTENTS

- MIXING CONSOLE
- POWER SUPPLY
- FIREWIRE CABLE
- SOFTWARE CD

Manual de inicio rápido para el usuario (ESPAÑOL)

CONTENIDOS DE LA CAJA

- MIXING CONSOLE
- FUENTE DE ALIMENTACIÓN
- CABLE FIREWIRE
- CD DE SOFTWARE

Bedienungsanleitung (DEUTSCH)

INHALT DER VERPACKUNG

- MISCHPULT
- NETZANSCHLUSS
- FIREWIRE KABEL
- SOFTWARE CD

Manuel d'utilisation du propriétaire (FRANÇAIS)

CONTENUE DE LA BOÎTE

- CONSOLE DE MIXAGE
- CÂBLE D'ALIMENTATION
- CÂBLE FIREWIRE
- CÉDÉROM LOGICIEL

Manuale rapido di utilizzazione (ITALIANO)

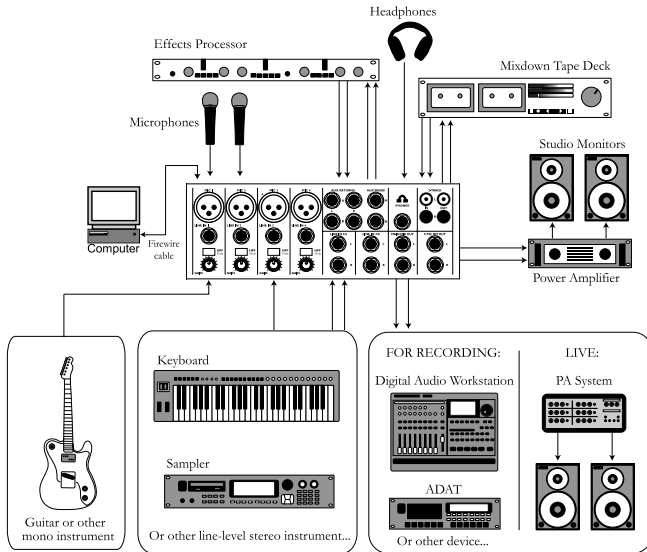
CONTENUTO DELLA CONFEZIONE

- CONSOLE DI MISSAGGIO
- ALIMENTAZIONE
- CAVO FIREWIRE
- CD CONTENENTE IL SOFTWARE

ALESIS

MULTIMIX

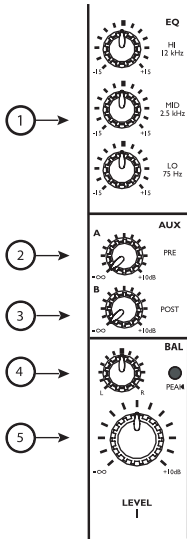
This page intentionally left blank.



MULTIMIX FIREWIRE QUICK START OWNERS MANUAL (ENGLISH)

1. Make sure all items listed on the front of this guide are included in the box.
2. **READ SAFETY INSTRUCTION BOOKLET BEFORE USING THE PRODUCT.**
3. Study this setup diagram.
4. Place the MultiMix in an appropriate position for operation.
5. Make sure all devices are turned off and all volumes are at "zero."
6. Connect all input sources as indicated in the diagram.
7. Connect the outputs to the power amplifier(s), tape decks, and/or audio sources.
8. Connect the Firewire cable to a computer.
9. Plug your MultiMix and other devices into AC power.
10. Switch everything on in the following order:
 - Audio input sources
 - External effects, recording devices or equalizers
 - The MultiMix FireWire
 - Amplifiers
 - Computer
11. When turning off, always reverse this operation by:
 - Turning off computers
 - Turning of amplifiers
 - Turning off the MultiMix FireWire
 - External effects, recording devices or equalizers
 - Last, any input devices
12. Go to <http://www.alesis.com/> for product registration.

CHANNEL FEATURES



Channel Strip

- EQ:** Boosts or cuts the respective frequencies for each channel. When recording via Firewire, the EQ settings ARE recorded.
- AUX A:** Routes channel signal to an external device like an effects processor.
- AUX B:** Controls level routed to internal effects processor or – if a device is patched into the Aux B returns – routes channel signal to an external device like an effects processor.

When recording via Firewire, the AUX A and B signals are NOT recorded on the individual channels. They ARE recorded via the MAIN MIX channels.

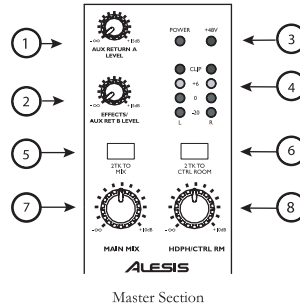
- PAN/BALANCE:** Assigns the channel signal to any spot in the mono or stereo spectrum.

When recording via Firewire, the MONO channels' pan position is ignored when recording the individual channel but is captured when recording the MAIN MIX channels. The STEREO channels' balance is captured by both the individual channel and the MAIN MIX channels.

- CHANNEL FADER:** Controls the MAIN OUT (analog) and Firewire (digital) signal level of the MIC or LINE inputs.

MASTER FEATURES

Note: It is recommended that the MULTIMIX FIREWIRE be turned off before connecting and disconnecting any sources to the inputs of the unit. However, do not turn off the MultiMix FireWire once you have established a connection to the computer.



Master Section

- AUX RETURN A:** Controls the signal level that returns from AUX A.
- EFFECTS/AUX RET B:** Controls the signal level of the internal effects or the level returning from AUX B if in use.
- +48V LED:** Indicates that the PHANTOM POWER is enabled for the MIC inputs.
- LED METERS:** Monitors the audio signal level.
- 2TK TO MIX:** Routes the 2TK input as well as the stereo return from the computer to the MAIN faders.
- 2TK TO CTRL:** Routes the 2TK input as well as the stereo return from the computer to the HDPH /CTRL RM output.
- MAIN MIX:** Controls the level of the MAIN OUTPUTS.
- HDPH/CTRL RM:** Controls the level that is sent to the PHONES or CTRL RM outputs.

RECORDING VIA FIREWIRE

1. INSTALL THE SOFTWARE ON YOUR COMPUTER

Important:
Follow these steps **BEFORE** you plug in your MultiMix
FireWire mixer for the first time!

If your computer has access to the Internet, point your browser to the Support > Downloads section of <http://www.alesis.com>. It's possible that updated drivers have been posted there since the time the software CD included with your MultiMix was printed.

Using either drivers from the website or the software CD, connect your MultiMix FireWire to your computer and turn the MultiMix FireWire on.

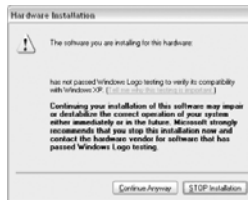
Windows

Under Windows XP, the "Found New Hardware" wizard will run. You will be prompted to install a series of drivers.

If you downloaded the drivers from the Internet, choose to install the drivers from a specific location when prompted, and point to the folder that contains the drivers.

If you are using the drivers from the CD, choose to install the drivers automatically when prompted.

For each of the several installations that occur, click "Continue Anyway" if Windows warns you that the drivers have not passed Microsoft Logo Certification.



*Windows Logo Certification warning.
Ignore this warning by clicking "Continue Anyway."*

Continue installing the various sets of drivers until you receive a message that "Your new hardware is installed and ready to use."

Do not cancel any of the installations, as they are all required for proper operation.

Macintosh

Mac driver installation is more straightforward, as only CoreAudio drivers are installed. Simply double-click the installer program to install the drivers.

Mac OS 10.3 or higher is required by the MultiMix drivers.

2. CONNECT THE MULTIMIX FIREWIRE TO THE COMPUTER

- Connect your microphones and line-level sources to the MultiMix FireWire
- Connect your output devices - headphones or speakers, or both - to the MultiMix FireWire. Turn their volume down to zero
- Turn on the MultiMix FireWire
- Connect the Firewire cable to both the MultiMix FireWire and your computer
- Turn your computer on

NOTE: If your computer "hangs" when following this procedure, turn off both the mixer and the computer. Try turning on the computer first. Turn on the MultiMix FireWire only after your computer has completely booted up.

3. START YOUR COMPUTER'S AUDIO RECORDING APPLICATION

- Within the recording application, select the MultiMix FireWire as the recording and playback device
- Adjust the MultiMix FireWire's sample rate (44.1kHz or 48kHz) and buffer sizes as appropriate
- Assign one or more MultiMix FireWire inputs and begin recording
 - Raise or lower the trim knobs and volume sliders on the MultiMix FireWire to achieve a strong signal which does not distort (clip)
 - Use the equalizer to sculpt the sound
 - To record the signal along with the built-in effects or AUX bus effects, record the master fader signal. Individual channel signals include EQ but do not include effects
- On the MultiMix FireWire, assign the "2-TK" output from the computer to the monitor mix
- Raise the monitoring level (headphones or monitor speakers) on the MultiMix FireWire to listen back

See the Reference Manual for additional details.