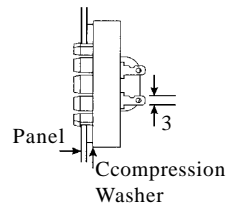


## GCB108 Series Piezo Buzzer

### ELECTRICAL SPECIFICATIONS

Model No.		10S3240
Operating Voltage	(VDC)	1~28
Rated Voltage	(VDC)	24
*Max. Rated Current	(mA)	15
*Min Sound Output	(dBA/30cm)	85
*Frequency	(Hz)	2900±500
Tone Nature		single
Operating Temperature	(°C)	-20~+60
Weight	(gm)	18

\*Value applying at rated voltage



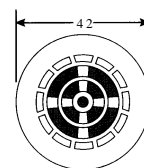
Typical Panel Installation

**Mounting** - Panel hole  $27\pm 0.1$  mm diameter should be punched from the back side so that locking fingers enter on the slightly rounded edge of the hole.

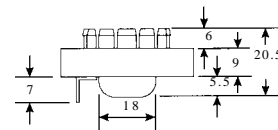
Assemble proper compression washer and press into panel hole until locking fingers snap over hole edge. Installation pressure should be applied only at the circumference of the device.

### Dimensions

Top View

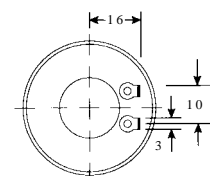


Side View



This portion snap-locks into panels 0.8 to 3.2mm thick using appropriate compression washer 27mm dia. panel hole required.

Bottom View



all dimensions are in mm

## GCB118 Series Piezo Buzzer

### ELECTRICAL SPECIFICATIONS

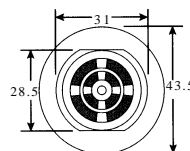
Model No.		11S3120	11PN3120	11PF3120	11D3120	11S3240	11PN3240	11PF3240	11D3240
Operating Voltage	(VDC)	1~16	4~16	4~16	4~16	1~28	4~28	4~28	4~28
Rated Voltage	(VDC)	12	12	12	12	24	24	24	24
*Max. Rated Current	(mA)	30	20	20	25/20	15	22	22	30/20
*Min Sound Output	(dBA/30m)	100	90	90	95/90	95	80	80	85/80
*Frequency	(Hz)	2900±500							
Tone Nature		single	normal pulse	fast pulse	dual	single	normal pulse	fast pulse	dual
Operating Temperature	(°C)	-20~+60							
Weight	(gm)	35							

\*Value applying at rated voltage

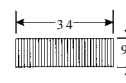
The pulse rate at rated voltage: Normal pulse: 0.8~1.2 Hz :Fast pulse: 4~6Hz

### Dimensions

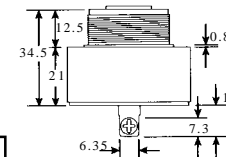
Top View



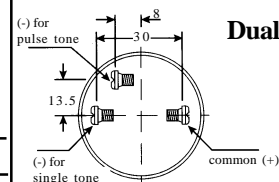
Nut



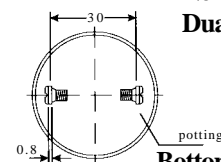
Side View



Dual Tone



Non Dual Tone



Bottom View

all dimensions are in mm