

# PWM DC Motor Variable Speed Controller



<http://www.casa.co.nz>

Edition: 22/04/2022

Type: **2A-12DC-30W-1805BK**

**DRAFT**

1805BK

## General Data

**Description:** DC motor pulse-width-modulated variable-voltage speed controller suitable for permanent-magnet DC motors up to 12Vdc and 30Watts.

**Brand:** CASA (OEM = ???)

**Model:** 2A-12V-30W-1803BK-201505-V2

**Input:** 2.2~ 12Vdc (not more than 13V depending on ambient temperature and duty-conditions)

**Output voltage:** 1.8V ~ 12V (PWM adjustable)

**Output current:** up to 2A (see IC data sheet for details)

**Output power:** recommended use below 30W

**Operating temperature:** -40°C ~ +85°C (nominal)

**Short circuit protection:** Yes (On-board resettable fuse)

**Over temperature protection:** TBA (shutdown output automatically after over temperature)

**Input Reverse Polarity Protection:** TBA (a shunt diode is connected on input for protection from reverse voltages)

**Wiring:** Screw-clamp terminals

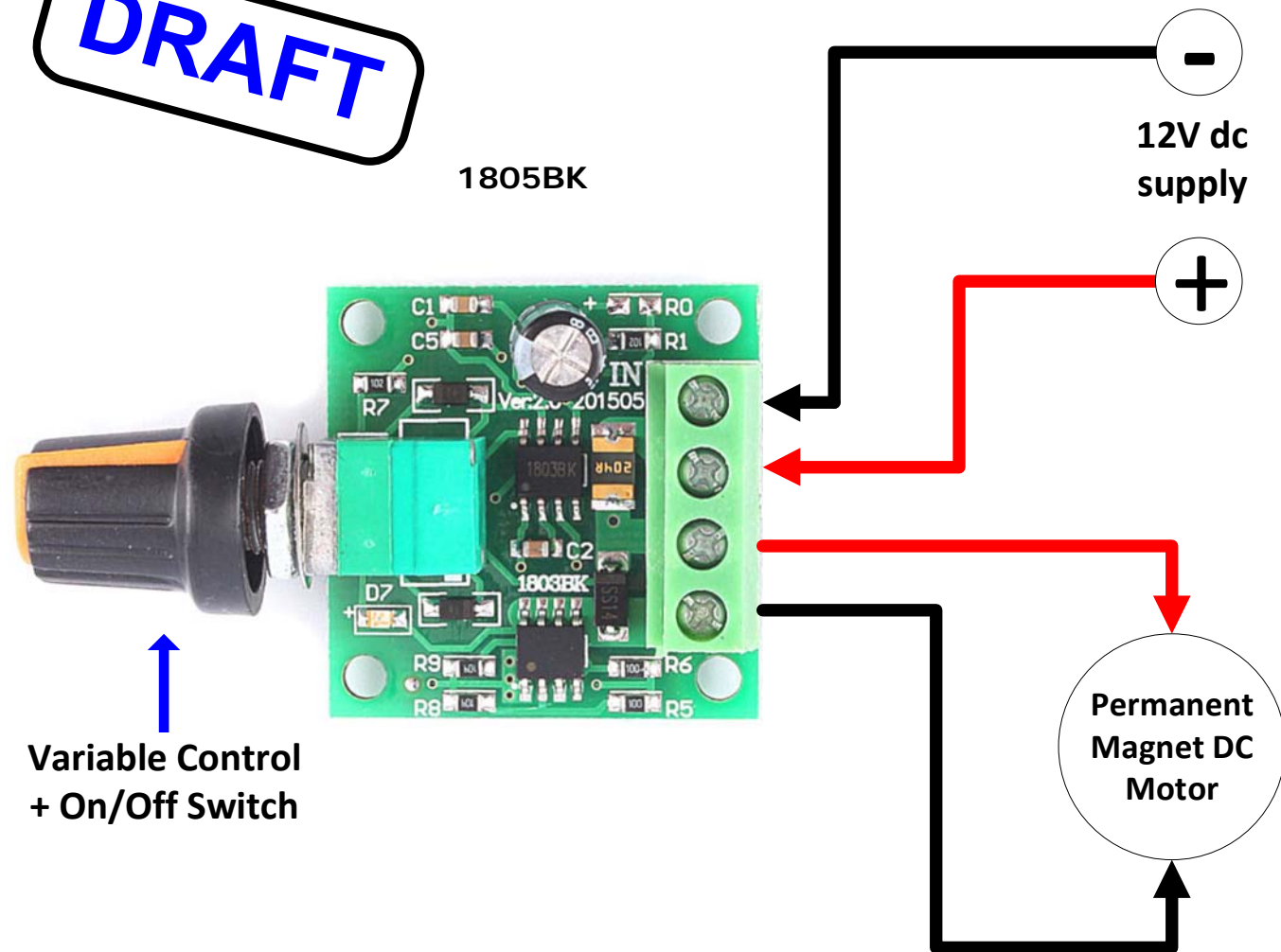
**Size:** 32 x 32 x 16 mm (nominal LxWxH) plus

**Fixing:** 4 x M3 clearance holes @ 26mm (L x W mm) matrix (pitch)

**Weight:** 16 gms

**Package & Options include:**

1 x 12Vdc 1~2A mains operational power supply.



NOTICE – the information on this page is not guaranteed for accuracy – CASA accepts no responsibility (neither expressed nor implied) for any errors or the consequence therefrom.