

7

SECTION

PARTS AND SCHEMATICS

7.1 DRAWINGS

The following assembly drawings (with parts lists) and schematics are in the arrangement shown below.

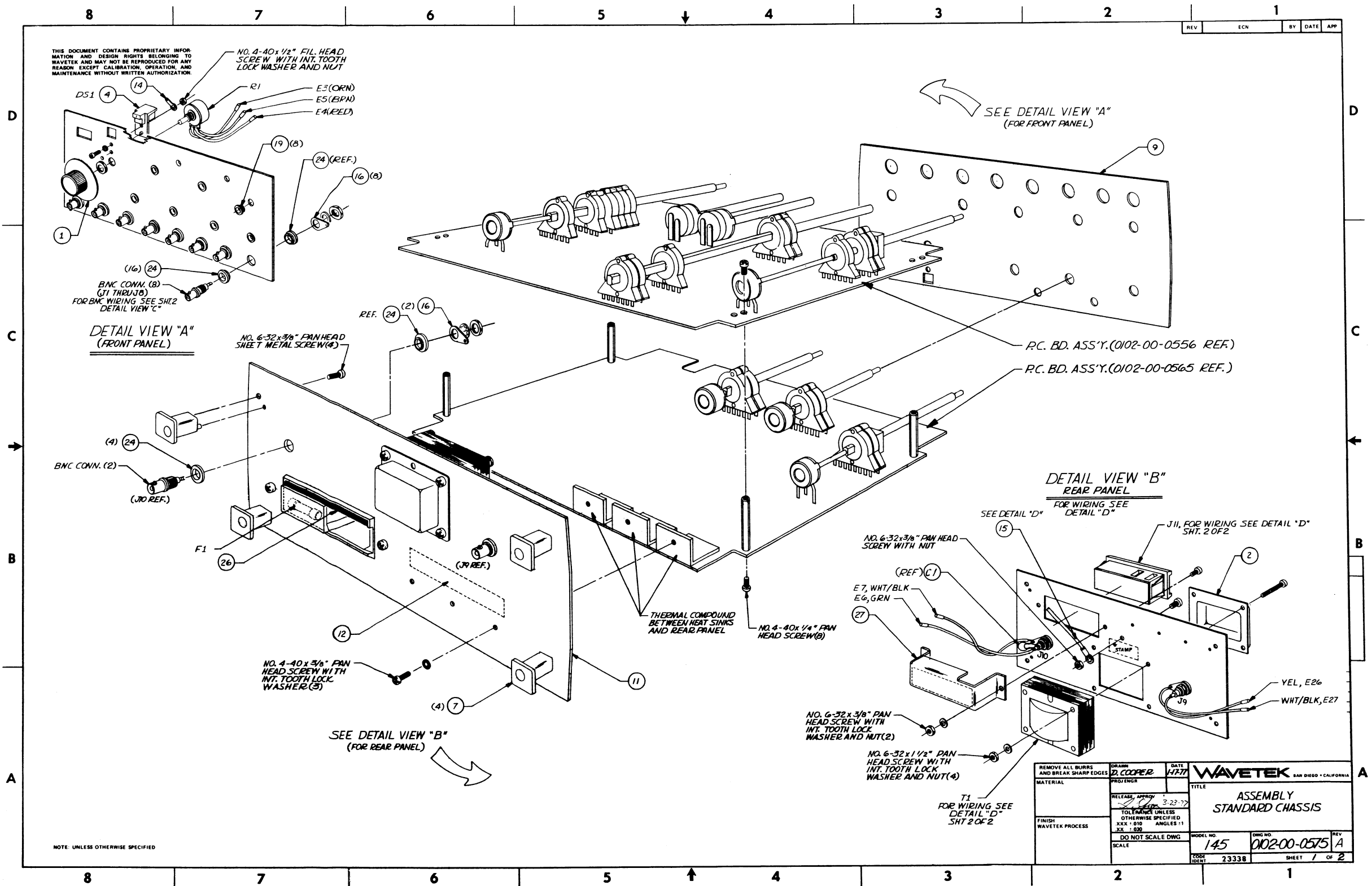
7.2 ORDERING PARTS

When ordering spare parts, please specify part number, circuit reference, board, serial number of unit and, if applicable, the function performed.

7.3 ADDENDA

Under Wavetek's product improvement program, the latest electronic designs and circuits are incorporated into each Wavetek instrument as quickly as development and testing permit. Because of the time needed to compose and print instruction manuals, it is not always possible to include the most recent changes in the initial printing. Whenever this occurs, addendum pages are prepared to summarize the changes made and are inserted immediately inside the rear cover. If no such pages exist, the manual is correct as printed.

Drawings	Drawing No.
CHASSIS	
Assembly Drawing	0102-00-0575
Schematic	0004-00-0101
Parts List	1101-00-0575
GENERATOR BOARD	
Parts Locator Drawing	0100-00-0556
Assembly Drawing (Sheet 2 of 2 only)	0101-00-0556
Schematic	0103-00-0556
Parts List	1100-00-0556
TRIG/PULSE BOARD	
Parts Locator Drawing	0100-00-0565
Assembly Drawing (Sheet 2 of 2 only)	0101-00-0565
Schematic	0103-00-0565
Parts List	1100-00-0565



NOTE: UNLESS OTHERWISE SPECIFIED

REMOVE ALL BLURRS AND BREAK SHARP EDGES		DATE	3-23-77
MATERIAL		PROJ ENGR	WJH
FINISH		RELEASE, APPROV	
WAVETEK PROCESS		TOLERANCE UNLESS OTHERWISE SPECIFIED	XXX - 010 ANGLES :1
SCALE		DO NOT SCALE DWG	XX - 030
MODEL NO		DWG NO	REV
145		0102-00-0575	A
CODE		SHEET 1 OF 2	
23338			