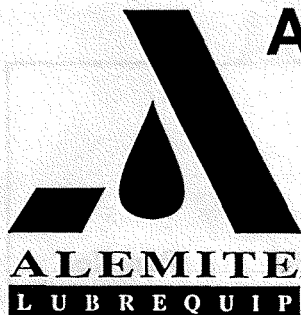


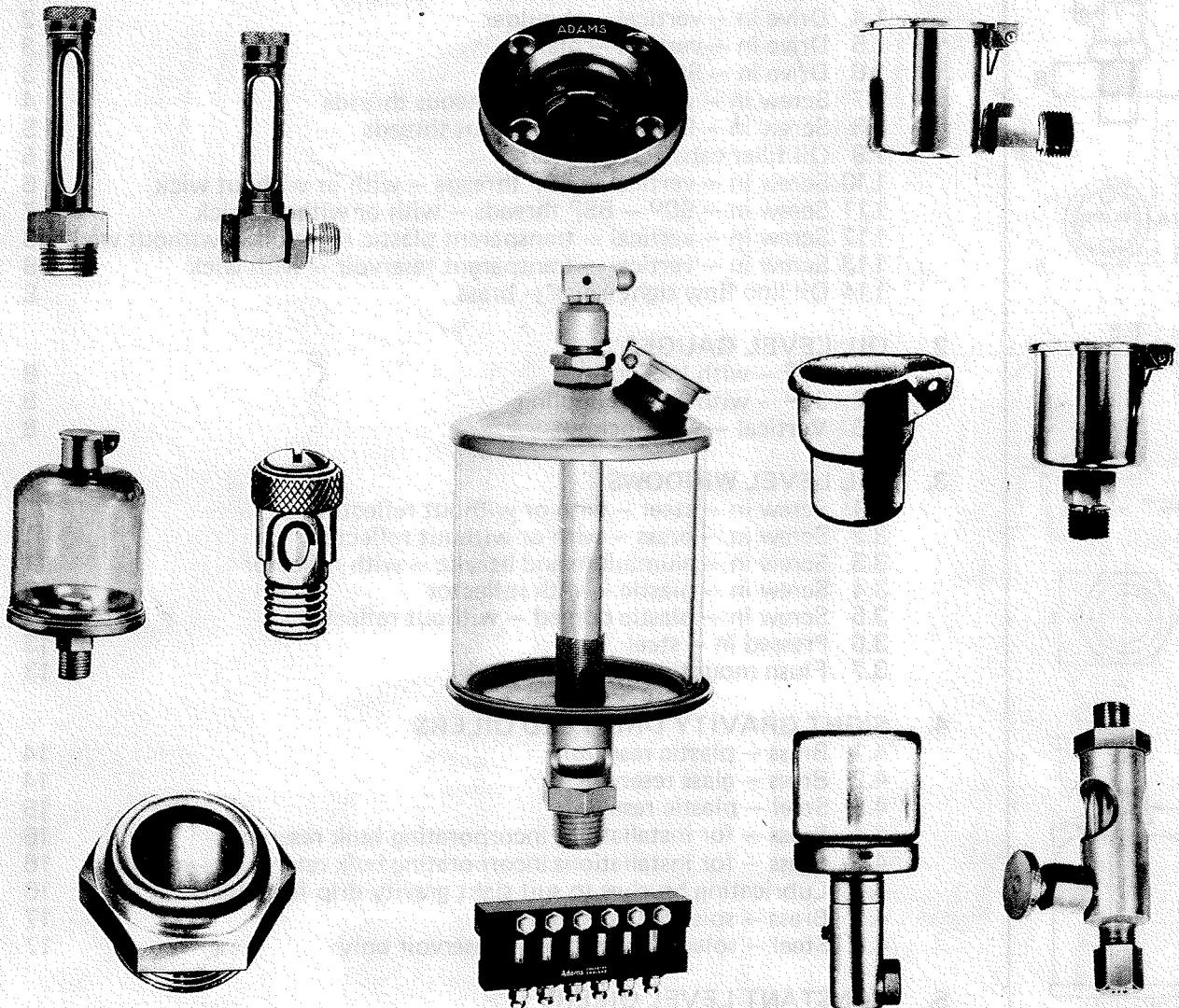
ATTN: EVAN STENT



# ALEMITE LUBREQUIP PTY LIMITED

## 100% AUSTRALIAN OWNED

*Providing products to help Australian Industries  
Prosper and Grow*



## OILERS AND LUBRICATORS PRICE LIST

**SUGGESTED LIST PRICES AS AT 1ST JANUARY, 1994.**

PLEASE NOTE PRICES ARE SUBJECT TO CHANGE

\*SALES TAX EXTRA AT 21% IF APPLICABLE



**modular systems**

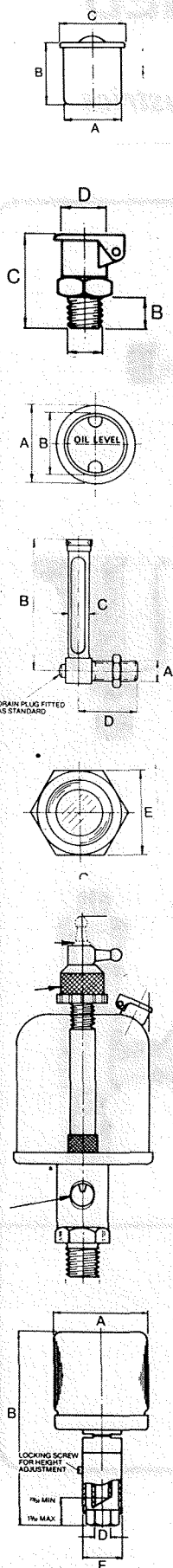
P.O. Box 38-828,  
PETONE, Wellington,  
New Zealand.  
PHONE: (64-4) 5687 277  
FAX: (64-4) 5685 161

## INDEX

	Page No.
<b>1. SPRING LID AND BALL CLOSING OIL HOLE COVERS</b>	
1.1 Ball closing oil hole covers — drive in	1
1.2 Winkley revolving sleeve — screw in — vertical — Miscellaneous threads	1
1.3 Drive in — vertical — shoulder — miniature	2
1.4 Drive in — vertical — shoulder	2
1.5 Drive in — vertical — plain	3
1.6 Drive in — 90° — shoulder	3
1.7 Screw in — vertical — miscellaneous threads	4
1.8 Screw in — 90° — miscellaneous threads	5
1.9 Oil filler caps and adaptors	5
1.10 Screw in — vertical — BSP threads — with or without wick	6
1.11 Screw in — 90° — BSP threads — with or without wick	7
1.12 Screw in — vertical — transparent plastic reservoir — without wick	8
1.13 Screw in — vertical — transparent reservoir — with wick	8
1.14 Oil line flow sight gauge — brass	8
<b>2. OIL LEVEL GAUGES</b>	
2.1 90° — with locknut	8
2.2 90° — with banjo coupling	8
2.3 Vertical — with locknut	8
<b>3. OIL LEVEL WINDOWS</b>	
3.1 Screw in — steel — with or without reflector	10
3.2 Screw in — brass — with or without reflector	11
3.3 Screw in — aluminium and acrylic — with reflector	11
3.4 Screw in — plastic — with reflector	12
3.5 Screw in — plastic domed — without reflector	12
3.6 Pressed in — steel	13
3.7 Flush mounting — brass	13
<b>4. SIGHT GRAVITY DRIP FEED OILERS</b>	
4.1 Brass — plastic reservoir	14
4.2 Brass — glass reservoir	14
4.3 Steel — plastic reservoir	15
4.4 Brass — for installations incorporating bulk reservoirs	16
4.5 Brass — for installations incorporating bulk reservoirs — manifold	16
4.6 Lubricating brushes to suit sight gravity drip feed oilers	16
4.7 Brass — solenoid operated	17
4.8 Steel — solenoid operated — reservoir only	17
<b>5. CONSTANT LEVEL OILERS</b>	
5.1 Fixed — bayonet type	18
5.2 Fixed — hinged lid	18
5.3 Variable — side entry	19
5.4 Variable — base entry	19
5.5 Automatic	19

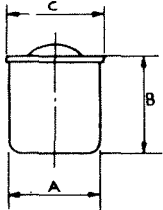
\*\* Numerical Index on Page 21.

\*\*\* Please note all items in this price list carry the "D" Discount Schedule.



# 1. ALEMITE LUBREQUIP SPRING LID & BALL CLOSING OIL HOLE COVERS

## 1.1 BALL CLOSING OIL HOLE COVERS - DRIVE IN, STYLE "A"



### GENERAL USE

Style A is a widely used, drive-in oil hole cover particularly suited to applications where a flush fitting is essential.

They will drive into die-castings without danger of cracking the metal.

### CONSTRUCTION

All style A oilers are made with exact uniform drive shanks to very close limits.

Due to their rigid construction these oilers may be driven into position without the danger of their collapsing and loss in assembly is reduced to a minimum.

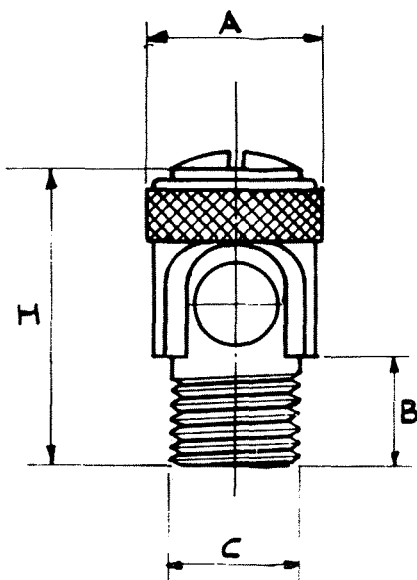
The spout of an oilcan can be inserted into these oilers very easily. They are self-closing and dirt and grit cannot reach and injure the bearings equipped with these oilers.

Finish — cadmium plate

No.	Drive in Hole Diameter	Drive Diameter A	Overall Height B	Overall Diameter C	List Price \$
1401	3/16"	.190" — .192"	9/32"	7/32"	0.80
1402	1/4"	.253" — .255"	5/16"	9/32"	0.80
1403	5/16"	.315" — .317"	3/8"	11/32"	1.30
1404	3/8"	.378" — .380"	13/32"	13/32"	2.00

## 1.2 SCREW IN - VERTICAL - MISCELLANEOUS THREADS - WINKLEY REVOLVING SLEEVE, STYLE "I"

### STANDARD DIMENSION



No.	A	B	H	C	List Price \$
2202	11/32"	1/4"	11/16"	1/4" x 26 TPI	8.90
2204	11/32"	1/4"	11/16"	3/16" x 32 TPI	8.90
2209	7/16"	1/4"	3/4"	5/16" x 18 TPI	9.50
2215	1/2"	5/16"	7/8"	1/8" BSP	10.10

STYLE 'I' is a dust proof oil hole cover known as the "Winkley" revolving sleeve type.

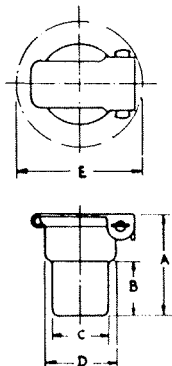
It may be used in a vertical or in a horizontal position as necessary.

It is fitted with an anti-vibration device against the revolving sleeve and prevents the head turning or opening when subject to vibration. A slot for screwdriver is provided.

# 1. ALEMITE LUBREQUIP SPRING LID & BALL CLOSING OIL HOLE COVERS

## 1.3 DRIVE IN - VERTICAL - SHOULDER - MINIATURE, STYLE "NL"

(Patented)



A cost-effective means of preventing bearing damage by water, dirt or other foreign matter gaining ingress through the oil hole.

Of steel construction, the spring is an integral part of the lid, ensuring automatic closure.

Extensively used on lawn mowers, fractional hp electric motors, food slicing machines and plumber blocks.

Finish — zinc plate

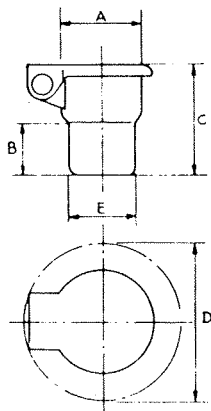
No.	Description	A	B	C	D	E	List Price \$
NL 100	1/4" Drive Fit	29/64"	7/32"	.253" .255"	9/32"	11/16"	0.70
NL 101	3/16" Drive Fit	15/32"	7/32"	.190" .193"	9/32"	11/16"	0.70
NL 103	6m/m Drive Fit	15/32"	7/32"	6m/m Taper	9/32"	11/16"	0.70
NL 104	3/16" Drive Fit	15/32"	7/32"	3/16" Taper	9/32"	11/16"	0.80
NL 106	1/4" Drive Fit	5/8"	3/8"	.253" .255"	9/32"	11/16"	0.80

## 1.4 DRIVE IN - VERTICAL - SHOULDER, STYLE "BS"

Made from steel, the style BS oil hole covers are designed for a drive fit into a drilled hole. The shoulder permits insertion to a predetermined depth.

The large size oilers in the range make an effective filler cap on oil reservoirs where their self-closing lids ensure the filling orifice is adequately covered.

Finish — nickle plate



No.	To drive in Size Hole	A	B	C	D	E	List Price \$
1511	1/4"	.287"	7/32"	15/32"	5/8"	.253" — .255"	1.70
1512	3/16"	.287"	7/32"	31/64"	5/8"	.190" — .192"	1.70
1513	6m/m	.287"	7/32"	15/32"	5/8"	6m/m Taper	1.70
1516	5/16"	.352"	1/4"	17/32"	3/4"	.315" — .317"	2.00
1518	7m/m	.352"	1/4"	35/64"	3/4"	7m/m Taper	2.00
1521	3/8"	.415"	9/32"	19/32"	13/16"	.378" — .380"	2.10
1523	8m/m	.415"	9/32"	39/64"	13/16"	8m/m Taper	2.50
1536	10m/m	1/2"	9/32"	23/32"	1"	10m/m Taper	2.50
1549	5/8"	3/4"	3/8"	15/16"	1-3/8"	.628" — .630"	7.50
1555	3/4"	1"	7/16"	1-1/16"	1-5/8"	.753" — .755"	8.30
1556	7/8"	1"	1/2"	1-1/8"	1-5/8"	.878" — .880"	8.30
1560	1"	1-1/4"	9/16"	1-5/16"	1-7/8"	1.003" — 1.005"	10.10
*1573	1-1/4"	1-5/8"	11/16"	1-1/2"	2-1/2"	1.253" — 1.256"	11.50
*1574	1-1/2"	1-5/8"	11/16"	1-1/2"	2-1/2"	1.503" — 1.507"	11.50

# 1. ALEMITE LUBREQUIP SPRING LID & BALL CLOSING OIL HOLE COVERS

## 1.5 DRIVE IN - VERTICAL - PLAIN, STYLE "BS"

### CONSTRUCTION

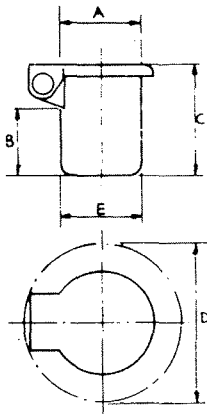
Style B oil hole covers are known as plain drive-in type. The shanks are of exact uniform size and generous oil passage is provided. Equipped with spring hinged lid, easily opened with oilcan spout and self-closing.

The cover is notched to hide the spring end ensuring a smooth surface. Wiping waste cannot catch on the spring nor can operator's hands be injured.

These oilers are all steel construction and may be driven into position without danger of crushing and loss in assembling is reduced to a minimum. They also drive into die castings without danger of cracking the metal.

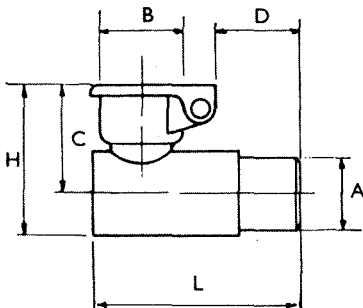
Like the style BS oil hole covers the larger sizes can be used as filler caps for reservoirs. Mesh strainers can be supplied to trap foreign bodies so the oil in the reservoir is free of debris.

Finish — nickle plate



No.	To drive in Size Hole	A	B	C	D	E	List Price \$
1604	1/4"	1/4"	1-7/16"	1-5/8"	5/8"	.253" — .255"	4.00
1614	1/2"	1/2"	3/8"	21/32"	1"	.503" — .505"	5.40
1620	5/8"	5/8"	13/32"	3/4"	1-1/4"	.628" — .630"	7.70
1623	3/4"	3/4"	17/32"	15/16"	1-3/8"	.753" — .755"	7.70
1625	1"	1"	9/16"	1"	1-5/8"	1.003" — 1.005"	9.90
1628	1-1/4"	1-1/4"	5/8"	1-1/16"	1-7/8"	1.253" — 1.256"	11.50
1640	1-3/4"	1-3/4"	9/16"	1"	2-3/4"	1.753" — 1.759"	11.90
1650	2-1/4"	2-1/4"	13/16"	1-1/4"	3-1/8"	2.253" — 2.258"	15.70

## 1.6 DRIVE IN - 90° - SHOULDER, STYLE "L"



Finish: Mechanical Nickel Plate.

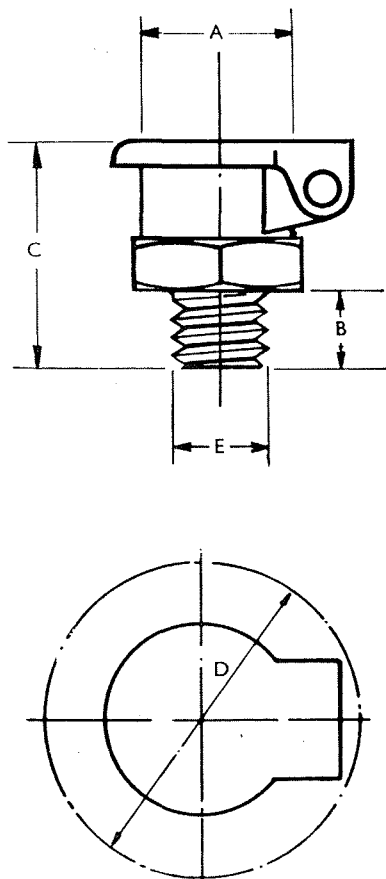
A two piece construction thus providing an alternative to style LS and allowing a wide choice of shank lengths for special applications.

No.	A	B	C	D	H	L	List Price \$
2511	.253" — .255"	1/4"	13/32"	11/32"	9/16"	3/4"	4.90
2531	.378" — .380"	3/8"	9/16"	7/16"	25/32"	1-1/16"	8.00

# 1. ALEMITE LUBREQUIP SPRING LID & BALL CLOSING OIL HOLE COVERS

## 1.7 SCREW IN - VERTICAL - MISCELLANEOUS THREADS, STYLES "C" & "F"

### STYLE "C"



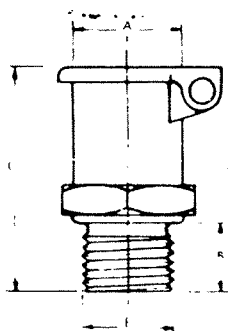
### CONSTRUCTION

The body is one piece and turned from solid bar stock. Provided with a generous oil passage. Threads are die cut and accurate. Equipped with patented spring hinge lid, easily opened with oilcan spout and self-closing. The cover is notched to hide end of spring, causing a smooth surface. Wiping waste cannot catch on spring end, nor can the hands be injured in handling.

No.	A	B	C	D	E	Hex. A/Flats	List Price \$
1730	1/4"	3/16"	9/16"	5/8"	3/16" - 32 T.P.I.	5/16"	7.70
1732	1/4"	3/16"	9/16"	5/8"	1/4" - 32 T.P.I.	5/16"	7.70
1733	1/4"	3/16"	9/16"	5/8"	1/4" - 26 T.P.I.	5/16"	7.70
1735	1/4"	3/16"	9/16"	5/8"	10/32 T.P.I.	5/16"	7.70
1736	1/4"	3/16"	9/16"	5/8"	2 B.A.	5/16"	7.70
1740	5/16"	7/32"	5/8"	3/4"	1/4" - 20 T.P.I.	3/8"	7.70
1743	5/16"	7/32"	5/8"	3/4"	5/16" - 18 T.P.I.	3/8"	7.70
1748	3/8"	1/4"	11/16"	13/16"	3/8" - 24 T.P.I.	7/16"	7.70
1749	3/8"	1/4"	11/16"	13/16"	1/8" B.S.P.	7/16"	7.70
1752	7/16"	9/32"	23/32"	15/16"	7/16" - 24 T.P.I.	1/2"	7.70
1763	5/8"	7/16"	1-1/32"	1-1/4"	1/4" B.S.P.	.710"	14.30
1787	3/8"	1-1/2"	2"	15/16"	1/8" B.S.P.	7/16"	14.30

Finish: Mechanical Nickel plate.

### STYLE "F"



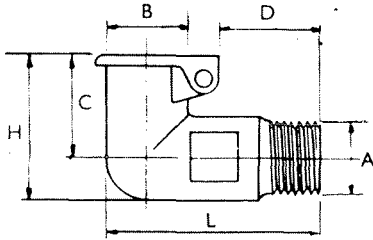
### GUIDES FOR OILING

Dirt and grit cannot reach and injure bearings equipped with these oil hole covers. The cover sets above the bearing, is quickly noticed and naturally not overlooked during the process of oiling.

No.	A	B	C	D	E	Hex. A/Flats	List Price \$
2141	5/8"	3/8"	1-1/4"	1-1/4"	1/8" B.S.P.	.71"	12.50
2141WF	5/8"	3/8"	1-1/4"	1-1/4"	1/8" B.S.P.	.71"	15.20

# 1. ALEMITE LUBREQUIP SPRING LID & BALL CLOSING OIL HOLE COVERS

## 1.8 SCREW IN - 90° - MISCELLANEOUS THREADS, STYLE "LS"



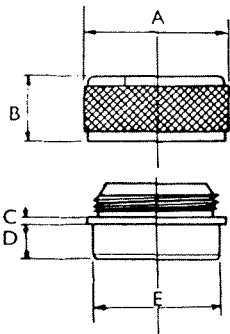
### CONSTRUCTION AND USE

The body of style LS is formed in one piece from hot brass stampings and carefully drilled to cause a generous oil passage. This particular oil cup is used extensively on small motors and machinery where side oiling is necessary. Threaded shanks are die cut and accurate. Drive shanks are machined to exact uniform sizes.

No.	A	B	C	D	H	L	SPECIAL NOTES	List Price \$
2601	3/16" - 32 TPI	1/4"	7/16"	11/32"	5/8"	3/4"		7.10
2602	1/4" - 32 TPI	1/4"	7/16"	11/32"	5/8"	3/4"		7.10
2603	1/4" - 26 TPI	1/4"	7/16"	11/32"	5/8"	3/4"		7.10
2604	10 - 32 THD	1/4"	7/16"	11/32"	5/8"	3/4"	AMERICAN THREAD	7.10
2606	.109" - .192"	1/4"	7/16"	11/32"	5/8"	3/4"	DRIVE FIT	7.10
2616	5/16" - 32 TPI	5/16"	5/16"	11/32"	5/8"	15/16"		7.90
2619	.253" - .255"	5/16"	5/16"	11/32"	5/8"	15/16"	DRIVE FIT	7.90
2630	1/8" BSP	3/8"	9/16"	15/32"	13/16"	1"		8.70
2633	3/8" - 24 TPI	3/8"	9/16"	15/32"	13/16"	1"		8.70
2668	1/4" - 32 TPI	1/2"	1/2"	3/8"	3/4"	1-1/16"		9.20
2669	5/16" - 32 TPI	1/2"	1/2"	3/8"	3/4"	1-1/16"		9.20
2680	1/8" ANP(T)	5/8"	13/16"	9/16"	1"	1-3/8"		12.10
2681	1/8" BSP	5/8"	13/16"	9/16"	1"	1-3/8"		12.10

## 1.9 OIL FILLER CAPS AND ADAPTORS, STYLE "AH"

### STANDARD DIMENSIONS



No.	To Fit Size Hole	A	B	C	D	E	List Price \$
2181	3/4"	15/16"	3/8"	3/32"	1/4"	.752" - .754"	22.80
2182	1-5/16"	1-1/2"	11/16"	1/16"	3/8"	1.315" - 1.317"	33.90
2183	1-5/8"	1-15/16"	3/4"	3/32"	15/32"	1.627" - 1.629"	64.30

Brass body and Anodised Aluminium Caps. Features a knurled screw top which is chained to body to prevent loss. This is a dust proof oil filler cap and has many applications.

CAPS ATTACHED TO ADAPTORS  
BY INTERNAL CHAIN

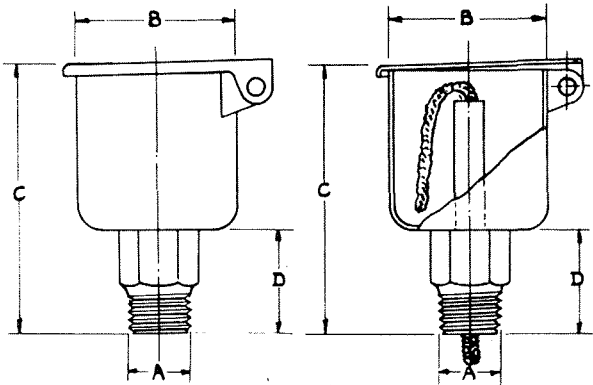
# 1. ALEMITE LUBREQUIP SPRING LID & BALL CLOSING OIL HOLE COVERS

## 1.10 SCREW IN - VERTICAL - BSP THREADS - WITH OR WITHOUT WICK, STYLE "D"

### CONSTRUCTION AND USE

Style "D" is one of our several styles of finest grade oil cup and adds to the appearance of high grade machinery. Equipped with patented spring hinge lid, easily opened with oilcan spout and self-closing.

The cover is notched to hide end of spring causing a smooth surface. Wiping waste cannot catch on spring end, nor can the hands be injured in handling.



Part No.	A	B	C	D	Hex. A/Flats	List Price \$
1914	1/8" BSP	5/8"	1-7/16"	11/16"	7/16"	10.40
1914 WF						13.40
1920	1/8" BSP	3/4"	1-19/32"	11/16"	7/16"	10.40
1920 WF						13.40
1927	1/8" BSP	1"	1-7/8"	13/16"	9/16"	11.90
1927 WF						14.30
1928	1/4" BSP	1"	1-7/8"	13/16"	9/16"	11.90
1928 WF						14.30
1937	1/8" BSP	1-1/4"	2-3/16"	13/16"	9/16"	13.50
1937 WF						15.90
1938	1/4" BSP	1-1/4"	2-3/16"	13/16"	9/16"	13.50
1938 WF						15.90
1952	1/4" BSP	1-5/8"	2-11/16"	15/16"	11/16"	16.70
1952 WF						19.70
1958	1/4" BSP	2-1/4"	3-3/8"	1-1/8"	11/16"	25.70
1958 WF						28.70
1959	3/8" BSP	2-1/4"	3-3/8"	1-5/32"	11/16"	25.70
1959 WF						28.70
1960	1/2" BSP	2-1/4"	3-1/2"	1-1/4"	7/8"	27.50
1960 WF						30.70

### ALL STEEL CONSTRUCTION

#### SPECIAL NOTE

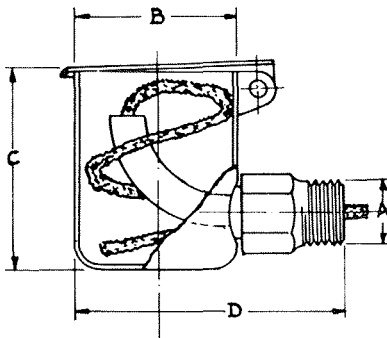
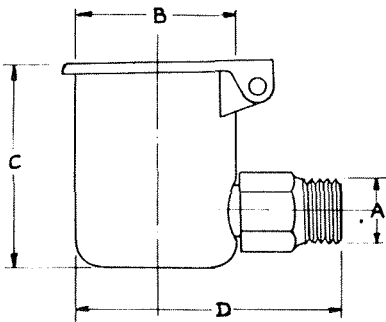
The letters WF following the part numbers denote they have syphon tube and wick fitted.

#### GUIDES TO OILING

The upright prominent appearance of this oiler causes it to be instantly recognised as an oil cup and naturally it is not overlooked during the process of oiling.

# 1. ALEMITE LUBREQUIP SPRING LID & BALL CLOSING OIL HOLE COVERS

## 1.11 SCREW IN - 90° - BSP THREADS - WITH OR WITHOUT WICK, STYLE "M"



### CONSTRUCTION AND USE

Finish: Mechanical Nickel Plate

Style M is a very popular oil cup where side oiling is necessary. It is substantially made, the cup drawn from heavy gauge steel is pierced and plunged to form a reliable fixing for the hexagon shank, which is machined from the solid bar stock and is driven in and copper brazed to ensure a leak proof connection.

Equipped with spring hinge lid, easily opened with oilcan spout and self-closing. The cover is notched to hide end of spring, causing a smooth surface. Wiping waste cannot catch on end of spring, nor can the hands be injured in handling.

Part No.	A	B	C	D	Hex. A/F	List Price \$
3011	1/8" BSP	5/8"	1-1/32"	1-5/16"	7/16"	10.30
3017	1/8" BSP	3/4"	1-3/16"	1-7/16"	7/16"	12.80
3017 WF						16.30
3024	1/8" BSP	1"	1-13/32"	1-13/16"	9/16"	12.80
3024 WF						16.30
3025	1/4" BSP	1"	1-13/32"	1-13/16"	9/16"	12.80
3025 WF						16.30
3031	1/8" BSP	1-1/4"	1-19/32"	2-1/16"	9/16"	14.30
3031 WF						18.20
3032	1/4" BSP	1-1/4"	1-19/32"	2-1/16"	9/16"	14.30
3032 WF						18.20
3041	1/4" BSP	1-5/8"	2-1/16"	2-9/16"	11/16"	17.50
3041 WF						21.40
3042	3/8" BSP	1-5/8"	2-1/16"	2-9/16"	11/16"	17.50
3042 WF						21.40
3064	1/4" BSP	2-1/4"	2-5/16"	3-3/8"	11/16"	26.80
3064 WF						30.80
3065	3/8" BSP	2-1/4"	2-5/16"	3-13/32"	11/16"	26.80
3065 WF						30.80
3066	1/2" BSP	2-1/4"	2-5/16"	3-1/2"	7/8"	28.50
3066 WF						32.40

### SPECIAL NOTE

The letters WF following the part Nos. denotes they have Syphon Tube and wick fitted.

### RETARD OIL FEED

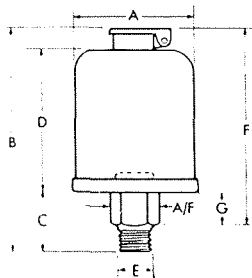
Syphon tube and wick can be fitted in the bowl to feed the oil gradually at small additional cost.

### DISTANT BEARINGS

These oil cups can be supplied with a female shank for connecting a pipe or nipple to reach distant bearings or reservoirs.

# 1. ALEMITE LUBREQUIP SPRING LID & BALL CLOSING OIL HOLE COVERS

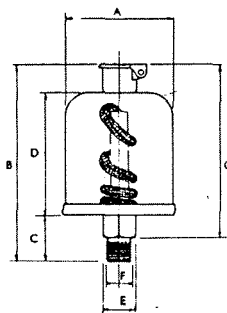
## 1.12 SCREW IN - VERTICAL - TRANSPARENT PLASTIC RESERVOIR - WITHOUT WICK, STYLE "OR"



FINISH BASE - ZINC PLATE, FILLER BREATHER - NICKEL PLATE

No.	A	B	C	D	A/Flats	E	F	G	Capacity ml	List Price \$
7708	1-1/2"	3"	7/8"	1-13/16"	.562"	1/4" BSP	2-5/8"	1/2"	35	19.80
7714	1-3/4"	3-1/2"	7/8"	2-1/8"	.562"	1/4" BSP	3-1/8"	1/2"	63	25.70
7724	2-1/4"	3-15/16"	7/8"	2-1/2"	.562"	1/4" BSP	3-9/16"	1/2"	125	25.70
7730	2-1/2"	4-3/16"	7/8"	2-3/4"	.562"	1/4" BSP	3-13/16"	1/2"	170	26.80

## 1.13 SCREW IN - VERTICAL - TRANSPARENT PLASTIC RESERVOIR - WITH WICK, STYLE "SWF"



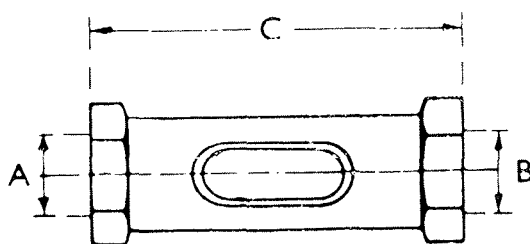
No.	A	B	C	D	E	F	G	Capacity ml	List Price \$
7701	1-1/4"	2-7/16"	3/4"	1-7/16"	.500"	1/8" BSP	2-1/16"	15	19.10
7706	1-1/2"	2-13/16"	3/4"	1-13/16"	.500"	1/8" BSP	2-7/16"	35	19.10
7712	1-3/4"	3-1/2"	7/8"	2-1/8"	.600"	1/4" BSP	3-1/16"	60	24.10
7717	2"	3-11/16"	7/8"	2-5/16"	.600"	1/4" BSP	3-1/4"	85	24.10

Visible Oil Supply Always and No Danger of Breaking. Automatic Feed Positive and Dependable.

Style "SWF" is an Oiler which automatically feeds oil to the bearing allowing the oil reserve to be constantly visible.

No adjustment is necessary and they are particularly recommended for machines which operate continuously.

## 1.14 OIL LINE FLOW SIGHT GAUGE - BRASS, STYLE "OL"



The sight-window permits the direct observation of oil flow.

No.	A	B	C	Hex. A/Flats	List Price \$
4281	1/4" B.S.P.	1/4" B.S.P.	2-7/16"	13/16"	48.90
4283	3/8" B.S.P.	3/8" B.S.P.	3"	1-1/4"	77.10

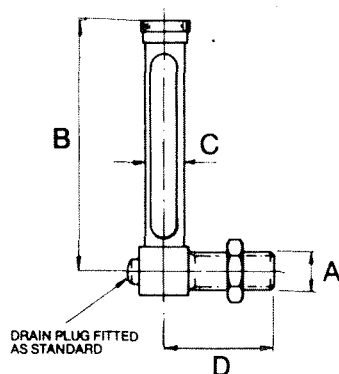
## 2. ALEMITE LUBREQUIP OIL LEVEL SIGHT GAUGES

### 2.1 90° - WITH LOCKNUT, STYLE "FGM"

Machined to permit generous oil passage, the glass is held between oil sealing washers by an independent locking nut.

FINISH: BRASS SELF-FINISH

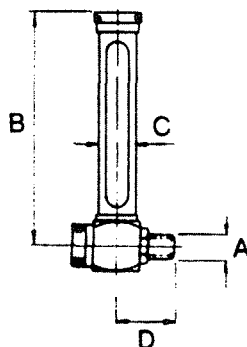
Dimensions in mm



New No.	Old No.	A	B	Old FG Lengths	C	D	List Price \$
3225	3241	1/8" B.S.P.	60	2-1/2"	13	27	35.50
3203	3253	1/4" B.S.P.	80	3"	13	27	37.80
3204	3263	1/4" B.S.P.	100	4"	13	27	39.40
3205	3273	1/4" B.S.P.	125	5"	13	27	41.00
3206	3276	1/4" B.S.P.	150	6"	13	27	45.70
3207	3278	1/4" B.S.P.	175	7"	13	27	47.30
3208	3280	1/4" B.S.P.	200	8"	13	27	50.40
3209	3282	1/4" B.S.P.	225	9"	13	27	52.00
3210	3284	1/4" B.S.P.	250	10"	13	27	55.10

### 2.2 90° - WITH BANJO COUPLING STYLE "FGB"

Dimensions in mm

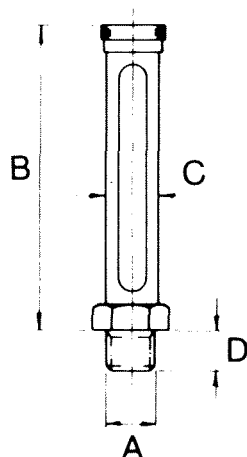


New No.	Old No.	A	B	Old FG Lengths	C	D	List Price \$
3303	3333	1/4" B.S.P.	80	3"	16	24	48.90
3304	3343	1/4" B.S.P.	100	4"	16	24	50.40
3305	3353	1/4" B.S.P.	125	5"	16	24	52.00
3306	3355	1/4" B.S.P.	150	6"	16	24	56.70
3307	3357	1/4" B.S.P.	175	7"	16	24	58.30
3308	3359	1/4" B.S.P.	200	8"	16	24	61.50
3309	3361	1/4" B.S.P.	225	9"	16	24	63.00
3310	3363	1/4" B.S.P.	250	10"	16	24	66.10

With Banjo Coupling.

Can be fitted with Plug or Drain Cock. Cost extra.

### 2.3 VERTICAL - WITH LOCKNUT, STYLE "FGV"



No.	B	A	C	D	List Price \$
3403	3"	1/4" BSP	9/16"	1/4"	37.80
3404	4"	1/4" BSP	9/16"	1/4"	39.40
3405	5"	1/4" BSP	9/16"	1/4"	41.00
3406	6"	1/4" BSP	9/16"	1/4"	45.70
3407	7"	1/4" BSP	9/16"	1/4"	47.30
3408	8"	1/4" BSP	9/16"	1/4"	50.40
3409	9"	1/4" BSP	9/16"	1/4"	52.00
3410	10"	1/4" BSP	9/16"	1/4"	55.10

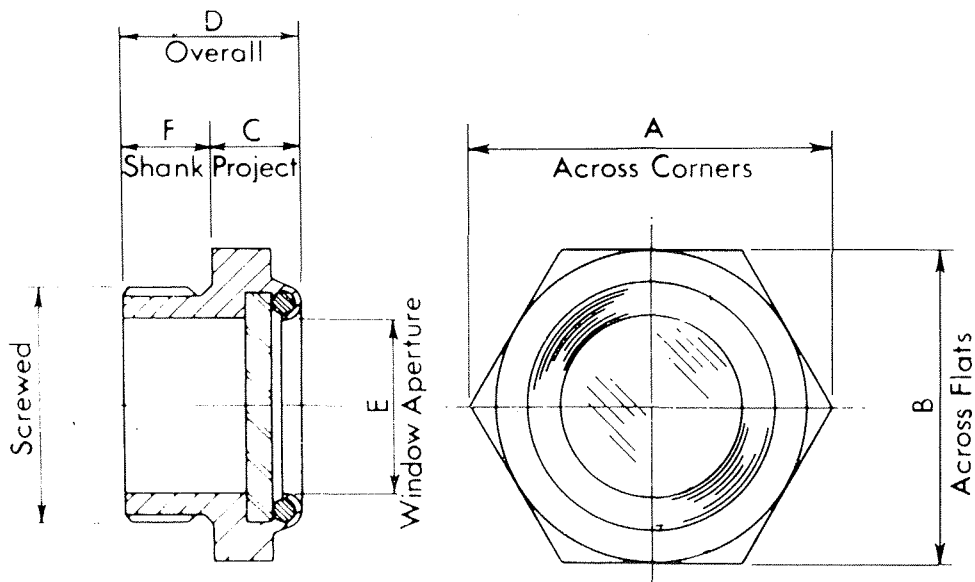
# 3. ALEMITE LUBREQUIP OIL LEVEL WINDOWS

## 3.1 SCREW IN - STEEL - WITH OR WITHOUT REFLECTOR, STYLE "BWS"

The "Adams" Steel/Glass Window Nut provides a most convenient form of inspection window for oil, fluid level indication, or other similar applications. They are machined to a high degree of accuracy and fitted with a clear toughened glass window and nitrile "O" Ring as standard.

Maximum working pressure 10 bar.

Maximum working temperature 0-100°C.



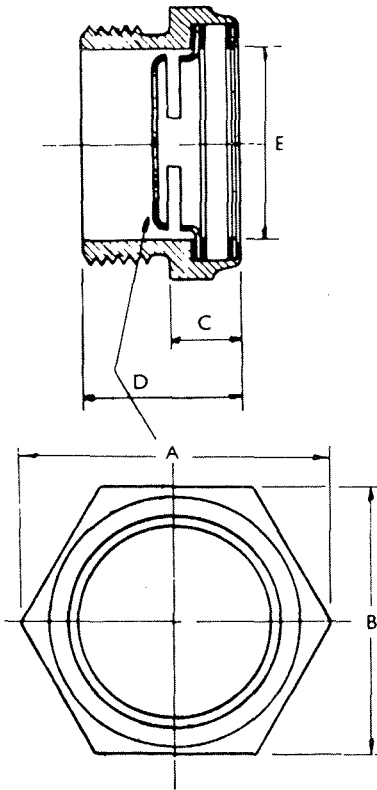
No.	Screwed	A	B	C	D	E	F	List Price \$
		NOMINAL						
4042	3/4" B.S.P.	1.50"	1.30"	1/2"	1"	3/4"	1/2"	32.60
4042-R								33.40
4052	3/4" N.P.T.	1.50"	1.30"	1/2"	1"	3/4"	1/2"	33.50
4052-R								34.40
4043	1" B.S.P.	1.93"	1.67"	5/8"	1-1/4"	1"	5/8"	37.70
4043-R								39.30
4053	1" N.P.T.	1.93"	1.67"	5/8"	1-1/4"	1"	5/8"	40.10
4053-R								41.60
4044	1-1/4" B.S.P.	2.37"	2.05"	5/8"	1-1/4"	1-1/4"	5/8"	47.10
4044-R								48.80
4045	1-1/2" B.S.P.	2.78"	2.41"	5/8"	1-1/4"	1-1/2"	5/8"	60.70
4045-R								62.30
4055	1-1/2" N.P.T.	2.78"	2.41"	5/8"	1-1/4"	1-1/2"	5/8"	63.60
4055-R								65.10
4046	2" B.S.P.	3.17"	2.75"	11/16"	1-3/8"	2"	11/16"	86.60
4046-R								88.20

Suffix 'R' means "With Reflector"

For application requiring special seals or where pressures and temperatures exceed those stated please consult our Technical Department.

### 3. ALEMITE LUBREQUIP OIL LEVEL WINDOWS

#### 3.2 SCREW IN - BRASS - WITH OR WITHOUT REFLECTOR, STYLE "BW"



Fitted with Perspex Window.

No.	Screwed	A	B	C	D	E	List Price \$
4040P	3/8" BSP	7/8"	.75"	5/16"	3/4"	7/16"	13.00
4041P	1/2" BSP	1-1/16"	.92"	13/32"	15/16"	9/16"	15.50
4041PR	1/2" BSP	1-1/16"	.92"	13/32"	15/16"	9/16"	17.10

Fitted with reflector. Toughened glass window.

No.	Screwed	A	B	C	D	E	List Price \$
4040TG	3/8" BSP	7/8"	.75"	5/16"	3/4"	7/16"	15.40
4041TG	1/2" BSP	1-1/16"	.92"	13/32"	15/16"	9/16"	18.50
4041TGR	1/2" BSP	1-1/16"	.92"	13/32"	15/16"	9/16"	19.90

These window nuts are machined from solid brass and fitted with either perspex or toughened glass.

Recommended for transmissions and gear cases of all kinds.

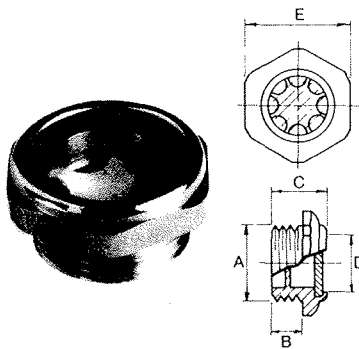
Maximum working pressure 7 bar.

Maximum working temperature 0-60°C (perspex)

Maximum working temperature 0-100°C (toughened glass)

#### 3.3 SCREW IN - ALUMINIUM & ACRYLIC WITH REFLECTOR, STYLE "AW"

Dimensions in mm



Old No.	New No.	No.	A	B	C	D	E	List Price \$
4230	4092	4230	1/4" B.S.P.	8	13.5	8	17	10.30
4131	4093	4231	3/8" B.S.P.	8	13.8	11	22	11.50
4232	4094	4232	1/2" B.S.P.	9	15	15	27	13.80
4233	4095	4233	3/4" B.S.P.	10	17	20	32	14.30
4234	4096	4234	1" B.S.P.	14	22.5	25	41	23.50
4235	4097	4235	1-1/4" B.S.P.	14	22.5	33	50	35.50
4236	4098	4236	1-1/2" B.S.P.	14	22.5	38	55	45.70
4237	4099	4237	2" B.S.P.	14	22.5	46	70	77.10

Material - ALUMINIUM  
ACRYLIC

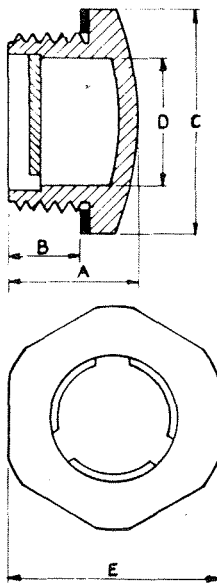
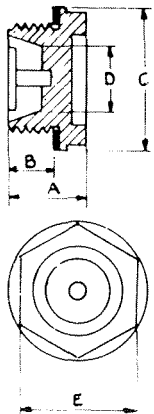
Finish - NATURAL

Maximum working pressure 3 bar

Maximum working temperature 70°C

### 3. ALEMITE LUBREQUIP OIL LEVEL WINDOWS

#### 3.4 SCREW IN - PLASTIC - WITH REFLECTOR, STYLE "PW"



Plastic Window Nuts are moulded in a High Tensile Plastic and are fully resistant to weather and sunlight. All sizes supplied with oil resistant seals. Maximum working pressure, 100 P.S.I.

The design of the rear white disc ensures that no liquid can remain in the indicator when the level falls below it.

Dimensions in mm

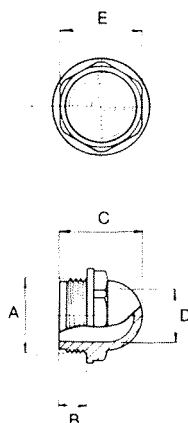
New No.	Old No.	A	B	C	D	E	List Price \$
4210	4070	1/4 BSP	8.2	13.2	6	17	5.40
4211	4071	3/8 BSP	9.2	15.7	9	22	5.40
4212	4072	1/2 BSP	10	18	12	24	5.40
4213	4073	3/4 BSP	12.2	21.2	16	30	6.10
4214	4074	1 BSP	11.6	20.6	22	36	10.20
4215	4075	1-1/4 BSP	12.8	22.3	28	46	13.80
4216	4076	1-1/2 BSP	13.8	25	33	50	17.40
4217	4077	2 BSP	13.8	26	43	60	24.90
6025	6025	3/4 BSP	12.2	21.2	16	30	7.20

Material - PLASTIC

Maximum working pressure 3 bar

Maximum working temperature 70°C

#### 3.5 SCREW IN - PLASTIC - DOMED - WITHOUT REFLECTOR, STYLE "PR"



Dimensions in mm

No.	A	B	C	D	E	List Price \$
4300	1/2" B.S.P.	10	30	14	24	9.50
4301	3/4" B.S.P.	12	34	20	30	10.40
4302	1" B.S.P.	12	36	23	36	13.80

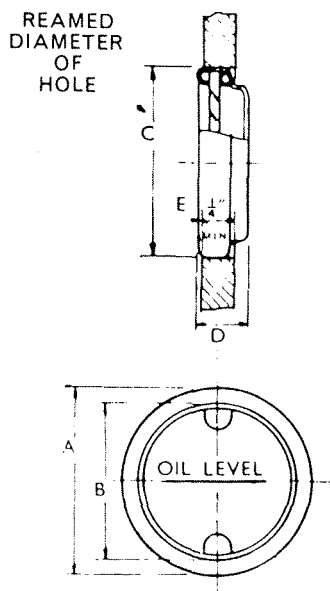
Material - PLASTIC

Maximum working pressure 3 bar

Maximum working temperature 70°C

# 3. ALEMITE LUBREQUIP OIL LEVEL WINDOWS

## 3.6 PRESSED IN - STEEL, STYLE "DW"



No.	A	B	C	D	E	List Price \$
4061 4061-A	1.255" 1.253"	1"	1.250" +.002" -.000"	11/32"	1/64"	5.50 5.70
4062 4062-A	1.505" 1.503"	1-1/4"	1.500" +.002" -.000"	3/8"	1/64"	6.30 6.50
4063 4063-A	2.005" 2.003"	1-3/4"	2.000" +.002" -.000"	5/8"	1/16"	8.70 8.90
4064-A	.880" .879"	11/16"	.875" +.002" -.000"	9/32"	1/64"	5.70

Suffix 'A' means "Oil Level" and a line is engraved on window.

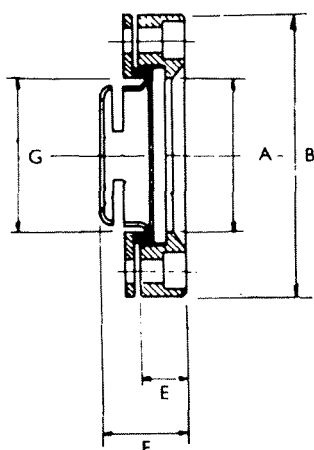
This Oil Window is eminently suitable for indicating oil level and flow in reservoir, etc. It is a self-contained one piece unit, constructed of Plated Steel with a window of clear unbreakable plastic. This window is held in place by a special oil proof synthetic gasket.

Installation is extremely simple — the unit is pressed into a reamed hole in the wall of the reservoir. To ensure wall tightness, the surface of the hole should be covered with a thin coat of hermatite or other oil-proof sealing material.

Maximum working pressure 10 lb/in<sup>2</sup>

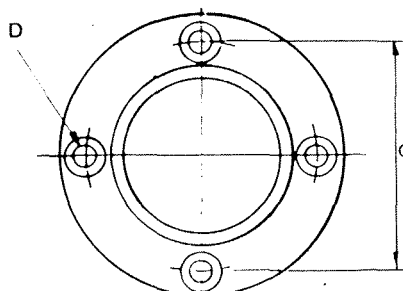
Maximum temperature 160°F with 2 lb/in<sup>2</sup> pressure.

## 3.7 FLUSH MOUNTING - BRASS, STYLE "CW"



No.	A	B	C	D	E	F	G	List Price \$
4032	1-1/4"	2-1/4"	1-27/32"	3/16"	3/8"	11/16"	1-1/4"	35.30
4033	1-1/2"	2-9/16"	2-5/32"	3/16"	3/8"	11/16"	1-1/2"	38.70

Same application as Style "BW" Series except socket head screws are used for flush mounting. Standard unit has reflector to increase visibility of oil. When there is excessive heat, pyrex glass and synthetic rubber gaskets can be supplied to suit this condition.



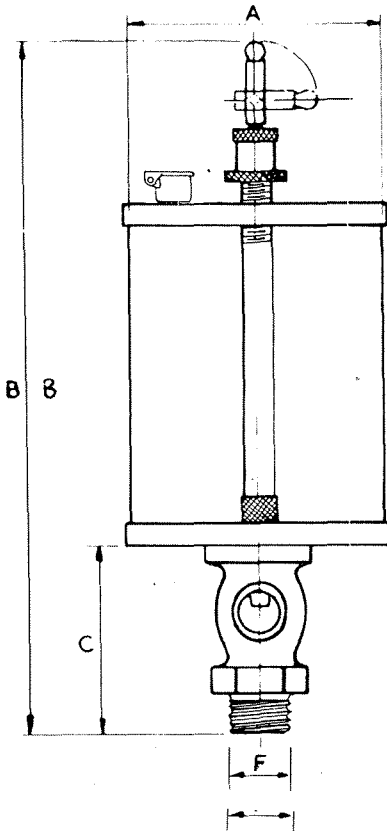
Maximum working pressure 7 bar.

Maximum working temperature 0-100°C.

Toughened Glass Fitted As Standard.

# 4. ALEMITE LUBREQUIP SIGHT GRAVITY DRIP FEED OILERS

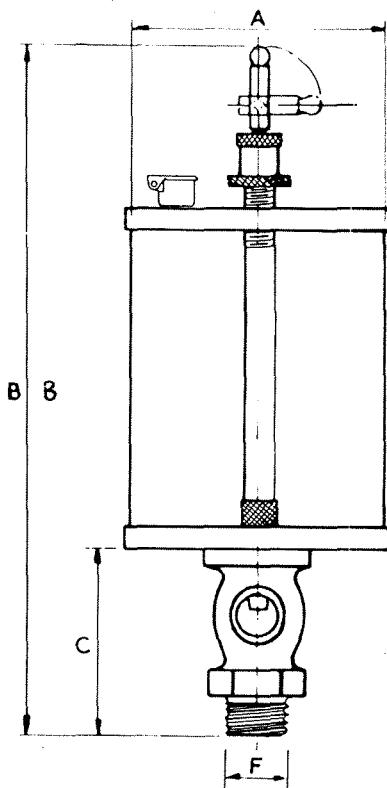
## 4.1 BRASS - PLASTIC RESERVOIR, STYLE "PSF"



Sight gravity feed Oilers are widely used as reservoirs for small gravity fed continuous or brush lubrication systems.

No.	A	B	C	A/F	F	Capacity ml	List Price \$
7476	1-1/4"	4-7/8"	1-13/16"	.710	1/8" B.S.P.	14	56.70
7481	1-3/4"	5-1/4"	1-13/16"	.710	1/8" B.S.P.	36	61.50
7482	1-3/4"	5-1/4"	1-13/16"	.710	1/4" B.S.P.	36	61.50
7487	2"	5-7/8"	1-13/16"	.710	1/4" B.S.P.	78	66.10
7493	2-1/2"	6-1/4"	1-13/16"	.710	3/8" B.S.P.	140	81.80
7498	3"	7-1/2"	2-1/8"	.820	3/8" B.S.P.	200	122.80
7500	3"	7-1/2"	2-1/8"	.820	1/2" B.S.P.	200	122.80
7208	3-3/4"	8"	2-1/4"	.820	1/2" B.S.P.	500	149.50
7213	4"	8"	2-1/4"	.820	1/2" B.S.P.	1000	188.70

## 4.2 BRASS - GLASS RESERVOIR, STYLE "GSF"



No.	A	B	C	A/F	F	Capacity ml	List Price \$
7676	1-1/4"	4-7/8"	1-13/16"	.710	1/8" B.S.P.	14	56.70
7681	1-3/4"	5-1/4"	1-13/16"	.710	1/8" B.S.P.	36	61.50
7682	1-3/4"	5-1/4"	1-13/16"	.710	1/4" B.S.P.	36	61.50
7687	2"	5-7/8"	1-13/16"	.710	1/4" B.S.P.	78	66.10
7693	2-1/2"	6-1/4"	1-13/16"	.710	3/8" B.S.P.	140	81.80
7698	3"	7-1/2"	2-1/8"	.820	3/8" B.S.P.	200	122.80
7600	3"	7-1/2"	2-1/8"	.820	1/2" B.S.P.	200	122.80
7609	3-3/4"	8"	2-1/4"	.820	1/2" B.S.P.	500	149.50
7613	4"	8"	2-1/4"	.820	1/2" B.S.P.	1000	188.70

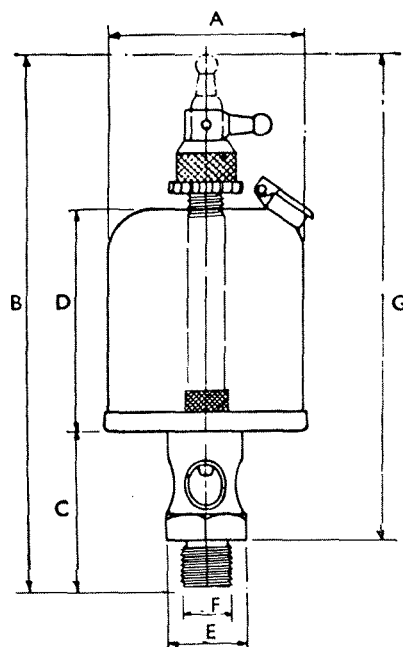
For high temperatures.

## 4. ALEMITE LUBREQUIP SIGHT GRAVITY DRIP FEED OILERS

### 4.3 STEEL - PLASTIC RESERVOIR, STYLE "USF"

These Oilers have shut off and needle valve oil feed adjustment features. An acrylic sight tube in shank is provided so that the operator can adjust the feed to the proper volume.

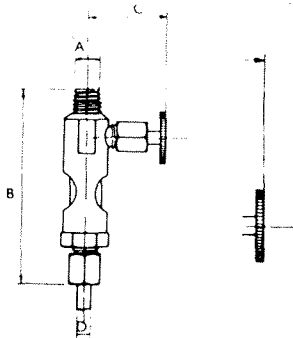
This type of Oiler is especially adapted where regulation of the oil feed is required and we recommended this streamlined model because of its attractive appearance and the unbreakable feature.



No.	A	B	C	D	E	F	G	Capacity ml	List Price \$
7402	1-1/4"	4-3/8"	1-3/8"	1-7/16"	.710"	1/8" B.S.P.	3-15/16"	20	53.60
7403	1-1/4"	4-3/8"	1-3/8"	1-7/16"	.710"	1/4" B.S.P.	3-15/16"	20	53.60
7409	1-1/2"	4-3/4"	1-3/8"	1-13/16"	.710"	1/8" B.S.P.	4-5/16"	40	55.10
7410	1-1/2"	4-3/4"	1-3/8"	1-13/16"	.710"	1/4" B.S.P.	4-5/16"	40	55.10
7416	1-3/4"	5-1/8"	1-7/16"	2-1/8"	.710"	1/8" B.S.P.	4-11/16"	70	55.10
7417	1-3/4"	5-1/8"	1-7/16"	2-1/8"	.710"	1/4" B.S.P.	4-11/16"	70	55.10
7424	2"	5-11/16"	1-3/4"	2-5/16"	.820"	1/4" B.S.P.	5-1/8"	100	59.90
7431	2-1/4"	5-7/8"	1-3/4"	2-1/2"	.820"	1/4" B.S.P.	5-5/16"	140	61.50
7432	2-1/4"	5-7/8"	1-3/4"	2-1/2"	.820"	3/8" B.S.P.	5-5/16"	140	61.50
7438	2-1/2"	6-1/8"	1-3/4"	2-3/4"	.820"	1/4" B.S.P.	5-9/16"	180	62.80
7439	2-1/2"	6-1/8"	1-3/4"	2-3/4"	.820"	3/8" B.S.P.	5-9/16"	180	62.80

## 4. ALEMITE LUBREQUIP SIGHT GRAVITY DRIP FEED OILERS

### 4.4 BRASS - FOR INSTALLATIONS INCORPORATING BULK RESERVOIRS, STYLE "OS"

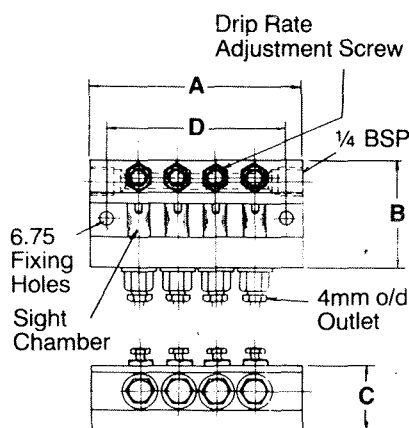


Provides accurate control of flow rate from bulk reservoir to the bearing. Sight window provides visual flow indication.

SCHEDULE D

No.	A	B	C	D	List Price \$
3471	1/8" BSP	2-7/8"	1-1/8"	3/16" O/D	51.20
3472	1/8" BSP	2-7/8"	1-1/8"	1/4" O/D	52.90
10078	1/8" BSP	2-7/8"	1-1/8"	4mm O/D	55.70

### 4.5 BRASS - FOR INSTALLATIONS INCORPORATING BULK RESERVOIRS - MANIFOLD, STYLE "AS"



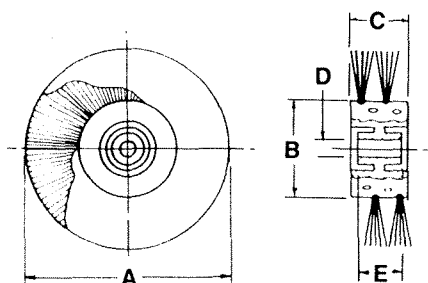
Dimensions in mm

Part No.	No. of Outlets	A	B	C	D	List Price \$
10026	4	97	49.6	30.2	81	259.50
10027	6	132	49.6	30.2	116	330.20

Material - Body ALUMINIUM

Finish - BLACK ANODISE

### 4.6 LUBRICATING BRUSHES TO SUIT SIGHT GRAVITY DRIP FEED OILERS

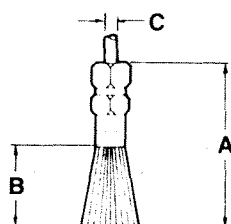


BRUSH ROUND

Dimensions in mm

No.	A	B	C	D	E	List Price \$
10467	29.37	38.1	21	6.35 dia	17.46	37.10

Material - NYLON BODY  
NYLON BRISTLES



BRUSH STRAIGHT

Dimensions in mm

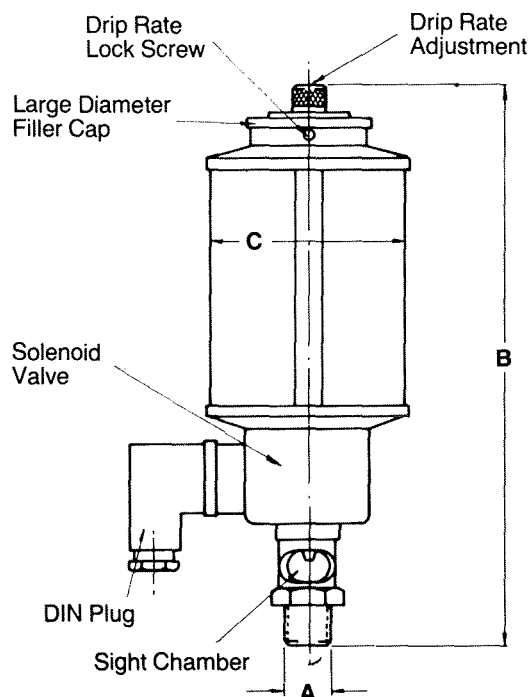
No.	A	B	C	List Price \$
10079	69.85	34.9	4mm o/d	37.10

Material - BODY BRASS  
BRISTLES NYLON

Finish - NATURAL

# 4. ALEMITE LUBREQUIP SIGHT GRAVITY DRIP FEED OILERS

## 4.7 BRASS - SOLENOID OPERATED, STYLE "GSD"



Dimensions in mm

No.	A	B	C	Capacity ml	List Price \$
460	1/2" B.S.P.	162	60	140	222.40
468	1/2" B.S.P.	182	60	200	228.90
480	1/2" B.S.P.	212	80	500	259.50
4100	1/2" B.S.P.	252	100	1000	304.50
4133	1/2" B.S.P.	297	133	2000	504.00
4150	1/2" B.S.P.	327	150	3000	640.50

Glass Reservoir.

The following voltages are available

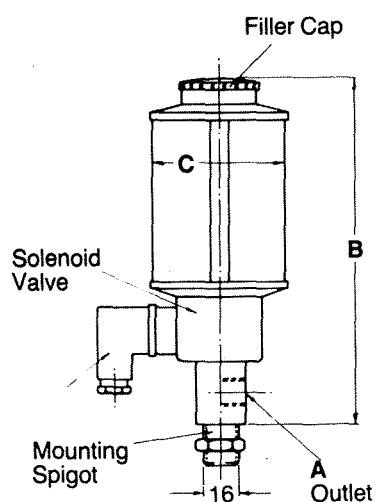
12V DC, 24V DC.

110V-50Hz, 220V-50Hz, 415V-50Hz.

When ordering please state voltage required

Solenoid Valve SOL240V	\$156.50
Solenoid Valve SOL415V	\$156.50
Solenoid Valve SOL110V	\$156.50
Solenoid Valve SOL12V	\$156.50
Solenoid Valve SOL24V	\$156.50

## 4.8 STEEL - SOLENOID OPERATED - RESERVOIR ONLY, STYLE "GRS"



Dimensions in mm

No.	A	B	C	Capacity ml	List Price \$
260	1/4" B.S.P.	150	60	140	212.40
268	1/4" B.S.P.	170	60	200	220.10
280	1/4" B.S.P.	210	80	500	259.50
2100	1/4" B.S.P.	250	100	1000	314.30
2133	1/4" B.S.P.	295	133	2000	463.80
2150	1/4" B.S.P.	325	150	3000	613.00

Glass Reservoir.

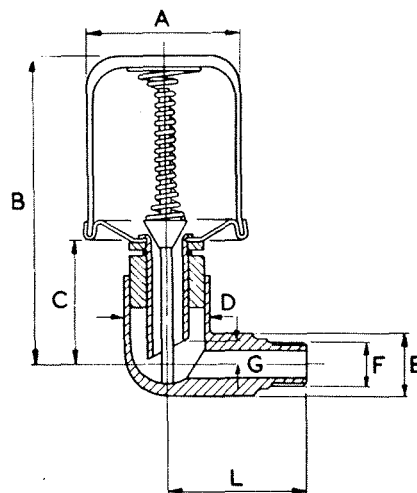
LUBRICATING BRUSHES TO SUIT ALL SIGHT GRAVITY DRIP FEED OILERS  
HIGHLIGHTED IN SECTION 4.6.

# 5. ALEMITE LUBREQUIP CONSTANT LEVEL OILERS

## 5.1 FIXED - BAYONET TYPE, STYLE "ABL"

Constant level oilers are used on a variety of applications, principally on pumps, and have proved very effective over many years. Adams are the largest manufacturers of constant level oilers in Europe, producing an extensive range of both fixed and variable constant level oilers.

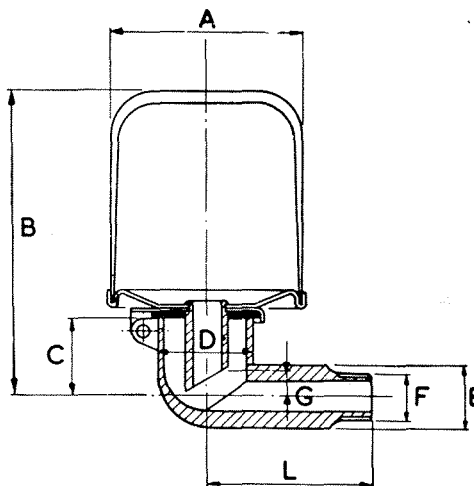
Made in steel, zinc plated for protection, reservoirs are made from transparent impact-resistant acetate mouldings so oil levels can be checked at a glance. Available with BSP and ANP connections. Maximum operating temperature 150°F.



No.	A	B	C	D	E	F	G	L	Capacity ml	List Price \$
7528	2"	3-3/8"	1-13/32"	1"	9/16" HEX	1/4" B.S.P.	7/32"	1-3/4"	85	50.40
7538	2-1/2"	4-3/16"	1-13/32"	1"	9/16" HEX	1/4" B.S.P.	7/32"	2"	185	52.00

Union nuts and nipples available where space does not permit oilers to rotate.

## 5.2 FIXED - HINGED LID, STYLE "ACL"



No.	A	B	C	D	E	F	G	L	Capacity ml	List Price \$
7551	1-1/4"	2-1/8"	5/8"	3/4"	7/16" HEX	1/8" B.S.P.	7/32"	1-9/16"	20	26.10
7552	1-1/4"	2-1/8"	5/8"	3/4"	7/16" HEX	1/8" N.P.T.	7/32"	1-9/16"	20	26.10
7561	1-3/4"	2-13/16"	5/8"	3/4"	7/16" HEX	1/8" B.S.P.	7/32"	1-9/16"	60	26.10
7567	2"	3-3/16"	13/16"	1"	9/16" HEX	1/4" B.S.P.	9/32"	2"	85	26.10
7568	2"	3-3/16"	13/16"	1"	9/16" HEX	1/4" N.P.T.	9/32"	2"	85	26.10
7572	2-1/4"	3-13/32"	13/16"	1"	9/16" HEX	1/4" B.S.P.	9/32"	2"	115	26.10
7573	2-1/4"	3-13/32"	13/16"	1"	9/16" HEX	1/4" N.P.T.	9/32"	2"	115	26.10
7577	2-1/2"	3-21/32"	13/16"	1"	9/16" HEX	1/4" B.S.P.	9/32"	2"	158	26.10
7578	2-1/2"	3-21/32"	13/16"	1"	9/16" HEX	1/4" N.P.T.	9/32"	2"	158	26.10
* 7595	2"	4-1/4"	15/16"	1"	9/16" HEX	1/4" B.S.P.	9/32"	2"	110	29.30
* 7596	2"	4-1/4"	15/16"	1"	9/16" HEX	1/4" N.P.T.	9/32"	2"	110	29.30

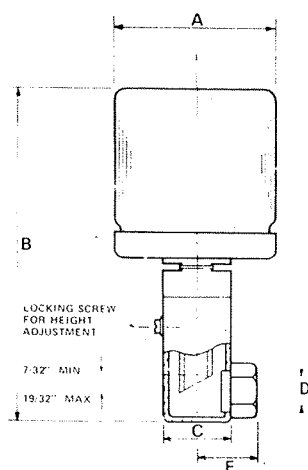
\*Glass reservoirs similar to VABL range.

# 5. ALEMITE LUBREQUIP CONSTANT LEVEL OILERS

## 5.3 VARIABLE - SIDE ENTRY, STYLE "VABL"

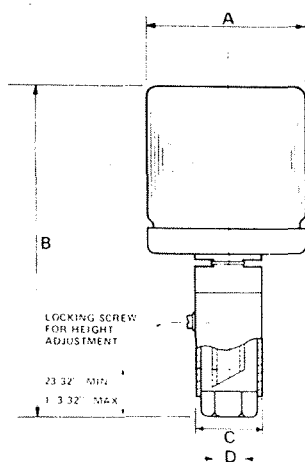
Steel construction, zinc plated for protection, the oil level on these units can be adjusted through 3/8". All models are fitted with glass reservoirs up to 500 cc capacity designed for ease of replacement in the event of accidental damage.

Side and base entry models with BSP and NPT connections to meet the widest range of applications.



No.	A	B		C	D	E	Capacity ml	List Price \$
		Min.	Max.					
7973	2-3/8"	5-1/8"	5-1/2"	1"	1/4" N.P.T.	7/8"	110	55.10
7982	2-3/8"	5-1/8"	5-1/2"	1"	1/4" B.S.P.	7/8"	110	55.10
7976	2-1/2"	7-1/4"	7-5/8"	1"	1/4" N.P.T.	7/8"	220	55.10
7985	2-1/2"	7-1/4"	7-5/8"	1"	1/4" B.S.P.	7/8"	220	55.10
7979	3-1/8"	8-1/2"	8-7/8"	1"	1/4" N.P.T.	7/8"	500	59.90
7988	3-1/8"	8-1/2"	8-7/8"	1"	1/4" B.S.P.	7/8"	500	59.90

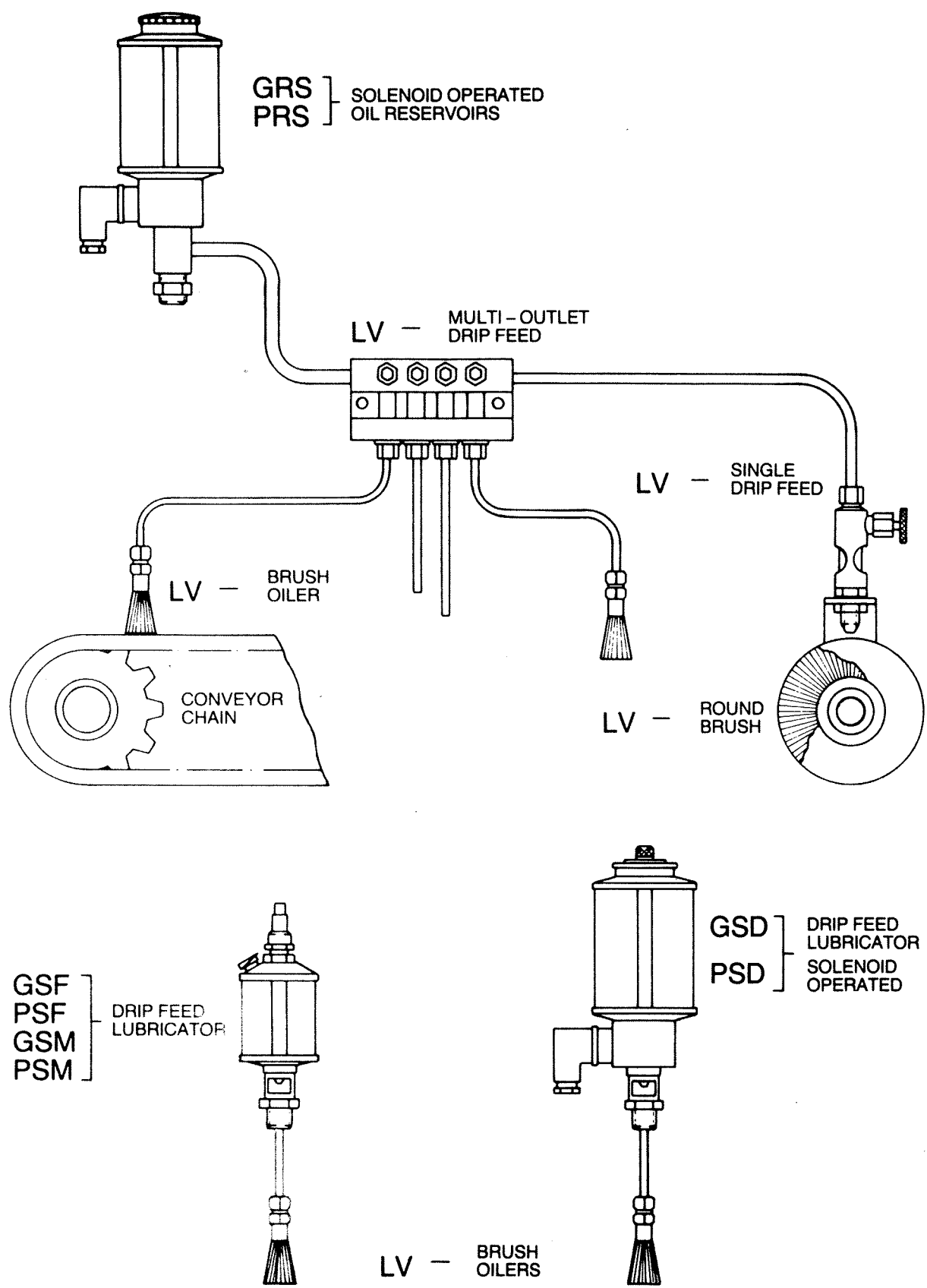
## 5.4 VARIABLE - BASE ENTRY, STYLE "VABM"



No.	A	B		C	D	Capacity ml	List Price \$
		Min.	Max.				
7974	2-3/8"	5-1/8"	5-1/2"	1"	1/4" N.P.T.	110	55.10
7983	2-3/8"	5-1/8"	5-1/2"	1"	1/4" B.S.P.	110	55.10
7977	2-1/2"	7-1/4"	7-5/8"	1"	1/4" N.P.T.	220	55.10
7986	2-1/2"	7-1/4"	7-5/8"	1"	1/4" B.S.P.	220	55.10
7980	3-1/8"	8-1/2"	8-7/8"	1"	1/4" N.P.T.	500	59.90
7989	3-1/8"	8-1/2"	8-7/8"	1"	1/4" B.S.P.	500	59.90

# SIGHT GRAVITY DRIP FEED OILERS

## TYPICAL SYSTEMS



# NUMERICAL INDEX

Model No.	Page	Model No.	Page	Model No.	Page	Model No.	Page
100	2	1959WF	6	3404	9	7409	15
101	2	1960	6	3405	9	7410	15
103	2	1960WF	6	3406	9	7416	15
104	2	2100	17	3407	9	7417	15
106	2	2133	17	3408	9	7424	15
260	17	2150	17	3409	9	7431	15
268	17	2141	4	3410	9	7432	15
280-SGS	17	2141WF	4	3471	16	7438	15
280-GRS	17	2181	5	3472	16	7439	15
460	17	2182	5	4040P	11	7476	14
468	17	2183	5	4040TG	11	7481	14
480	17	2202	1	4041P	11	7482	14
1401	1	2204	1	4041PR	11	7487	14
1402	1	2209	1	4041TG	11	7493	14
1403	1	2215	1	4041TGR	11	7498	14
1404	1	2511	3	4032	13	7500	14
1406	1	2531	3	4033	13	7528	18
1511	2	2601	5	4042	10	7538	18
1512	2	2602	5	4042R	10	7551	18
1513	2	2603	5	4043	10	7552	18
1516	2	2604	5	4043R	10	7561	18
1518	2	2606	5	4044	10	7567	18
1521	2	2616	5	4044R	10	7568	18
1523	2	2619	5	4045	10	7572	18
1536	2	2630	5	4045R	10	7573	18
1549	2	2633	5	4046	10	7577	18
1555	2	2668	5	4046R	10	7578	18
1556	2	2669	5	4052	10	7595	18
1560	2	2680	5	4052R	10	7596	18
1573	2	2681	5	4053	10	7600	14
1574	2	3011	7	4053R	10	7609	14
1604	3	3017	7	4055	10	7613	14
1614	3	3017WF	7	4055R	10	7676	14
1620	3	3024	7	4061	13	7681	14
1623	3	3024WF	7	4061A	13	7682	14
1625	3	3025	7	4062	13	7687	14
1628	3	3025WF	7	4062A	13	7693	14
1640	3	3031	7	4063	13	7698	14
1650	3	3031WF	7	4063A	13	7701	8
1730	4	3032	7	4064A	13	7706	8
1732	4	3032WF	7	4070	12	7708	8
1733	4	3041	7	4071	12	7712	8
1735	4	3041WF	7	4072	12	7714	8
1736	4	3042	7	4073	12	7717	8
1740	4	3042WF	7	4074	12	7724	8
1741	20	3064	7	4075	12	7730	8
1743	4	3064WF	7	4076	12	7780	26
1748	4	3065	7	4077	12	7781	26
1749	4	3065WF	7	4078	12	7973	19
1752	4	3066	7	4092	11	7974	19
1763	4	3066WF	7	4093	11	7976	19
1787	4	3241	9	4094	11	7977	19
1914	6	3253	9	4095	11	7979	19
1914WF	6	3263	9	4096	11	7980	19
1920	6	3273	9	4097	11	7982	19
1920WF	6	3276	9	4099	11	7983	19
1927	6	3278	9	4100	17	7985	19
1927WF	6	3280	9	4133	17	7986	19
1928	6	3282	9	4150	17	7988	19
1928WF	6	3284	9	4281	8	7989	19
1937	6	3333	9	4283	8	10026	16
1937WF	6	3343	9	4300	12	10027	16
1938	6	3353	9	4301	12	10036	16
1938WE	6	3355	9	4302	12	10037	16
1952	6	3357	9	6025	12	10078	16
1952WF	6	3359	9	7208	14	10079	16
1958	6	3361	9	7213	14	10467	16
1958WF	6	3363	9	7402	15		
1959	6	3403	9	7403	15		