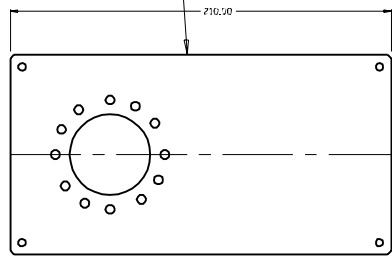


CASA Part Number:
PLT-210x110-IN-BP2JB-MS20

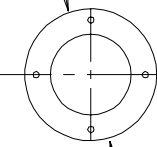
CASA Part Number:
PLT-CLAMP-BP2JB-MS20

CASA Part Number:
PLT-210x110-BP2JB-MS20

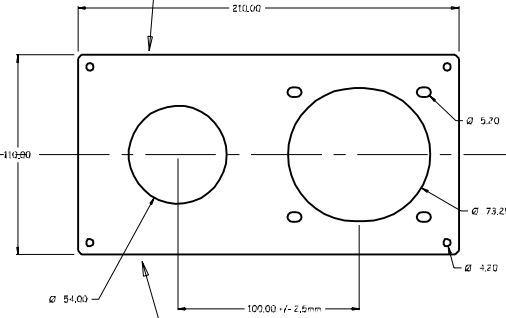
CASA Part Number:
PLT-CLAMP-NEMA34-MS20



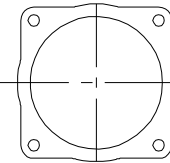
Inner Flange Plate for
"Z" quill drive housing



Quill Boss Clamping Plate



Outer Plate for NEMA34
"Z" quill drive housing
with motor projecting outwards



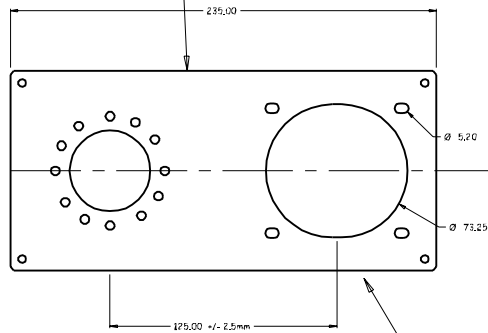
Clamp Plate for
NEMA34 motors

CASA Part Number:
PLT-235x110-IN-BP2JB-MS20

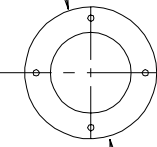
CASA Part Number:
PLT-CLAMP-BP2JB-MS20

CASA Part Number:
PLT-235x110-BP2JB-MS20

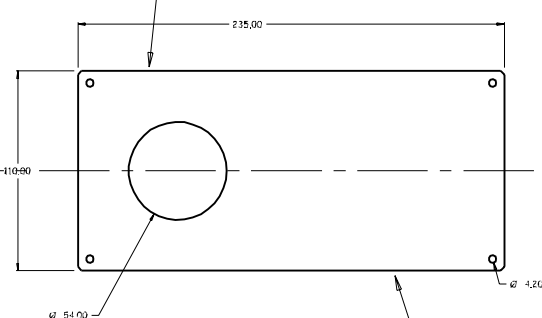
CASA Part Number:
PLT-CLAMP-NEMA34-MS20



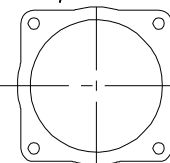
Inner Flange Plate for
"Z" quill drive housing
with motor projecting inwards



Quill Boss Clamping Plate



Outer Plate for NEMA34
"Z" quill drive housing



Clamp Plate for
NEMA34 motors

MATERIAL
Steel Sheet

ALLOY
2mm CLA

EST. AREA
xxx mm


EST. WEIGHT
xxx kg

EST. PERIPHERY
EXT: xx mm
TOT: xx mm

TOLERANCE
0-50mm ±0.1mm
50-100mm ±0.25mm
100-200mm ±0.5mm
200-300mm ±0.75mm
300-400mm ±1.0mm
> 400mm ±1.5mm

BS1474:1987
APPLIES UNLESS
OTHERWISE
SPECIFIED

JOB No.
2902

 Modular Systems P. O. BOX 38-828, WELLINGTON, NEW ZEALAND TELEPHONE : (64-4) 5687 277 FACSIMILE : (64-4) 5685 161	CUSTOMER : CASA Modular Systems Ltd	SIZE : A3	DRAWING Reference No. : 2BJ-Z-Housing	ISSUE : A
	DESCRIPTION : Drive Assembly Housing for "Z" Axis BP-2JB	DATE : 01/11/07	APPROVED : 7	DWG. SCALE : 1:1