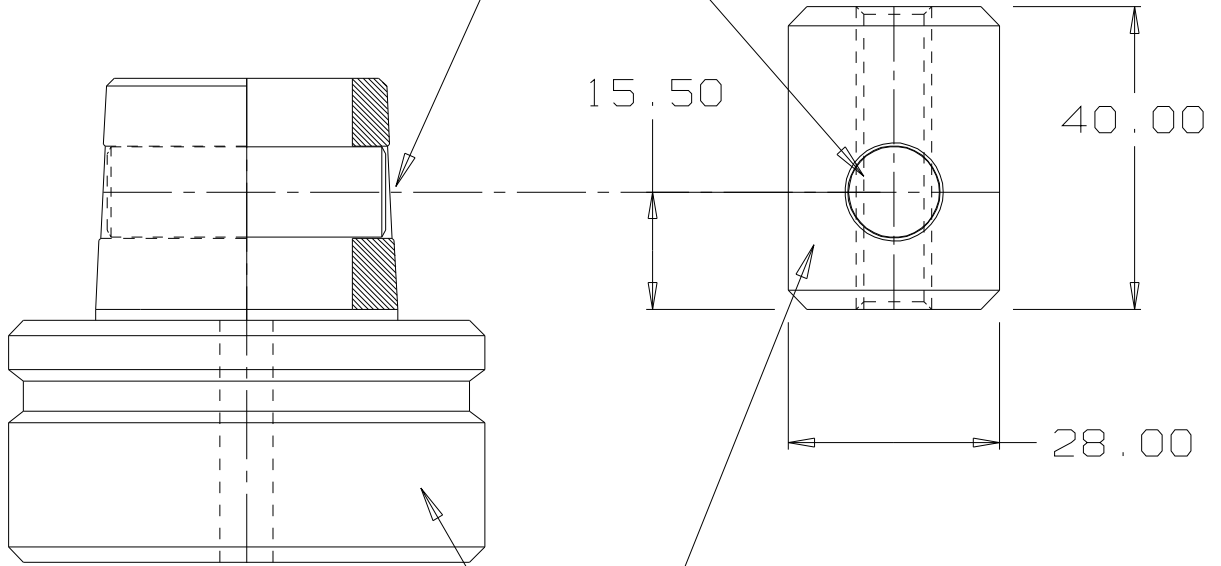


Thru-Tapped for M10
or M12 Draw-Bolt

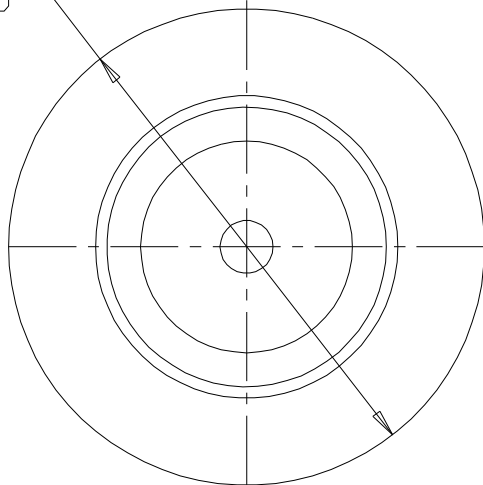
12mm dia dowel
36mm (+0/-0.2) long



Dowser-Clamp Boss

HS63 Mitsubishi
Stub-Assembly

Ø63.00



Note - this 'concept' is a simple solution to mounting HS63 CNC toolholders into ISO/BT30/40/50 splidles. A BLANK ISO/BT/NMBT spindle-arbor is required with sufficient shoulder-material to contain the HS63 stub and machined to interface with the HS63 and provide for tensioning the Dowser-Clamp Boss.

MATERIAL	Carbon Steel
ALLOY	Tool-Steel
EST. AREA	xxx mm
EST. WEIGHT	xxx kg/m
EST. PERIPHERY	
EXT: xxx	mm
TOT: xxx	mm
TOLERANCE	0.00mm ±0.1mm 00.0mm ±0.25mm 0000mm ±0.5mm 0-600mm ±0.1mm > 600mm ±0.5mm
BS1474:1987	APPLIES UNLESS OTHERWISE SPECIFIED
JOB No.	300X

	CUSTOMER :	CASA Modular Systems	SIZE	DRAWING Reference No.	ISSUE
	DESCRIPTION :	HS63 to ISO Spindle Adaptor	A4	HS63-BT-Adaptor	A
P.O. BOX 38-828, WELLINGTON, NEW ZEALAND TELEPHONE : (64-4) 9393 777 WWW SITE: http://www.casa.co.nz	DRAWN :	DATE :	APPROVED :	DWG. SCALE :	© COPYRIGHT : CASA Modular Systems ALL RIGHTS RESERVED
	AWD	11/07/18	?	1:1	