

DX



I AM YOUR CREATIVE TOUCH



D5500
www.nikon-asia.com

At the heart of the image





Get in touch with your creativity

Taking amazing pictures and sharing them have become easier than ever with Nikon's latest digital SLR. The D5500 inherits a range of advanced imaging and creative technologies, and combines them with the convenience of a touch screen, Wi-Fi® connectivity and slim, lightweight body. At a touch, it lets you take vibrant, creative pictures and share them instantly via your smart device.

Whether you're traveling to an exotic destination or out partying at the weekend, with the D5500 you'll be able to capture each moment in style – and show your friends and family what they're missing.

- Fast, intuitive touch-screen interface and Wi-Fi connectivity.
- Thanks to its carbon-fiber monocoque structure, the D5500 has an incredibly slim, lightweight body with an easy-to-hold, deep grip.
- Nikon DX-format CMOS sensor delivering 24.2 effective megapixels.
- High ISO settings up to ISO 25600, delivering superb low-light performance.
- Variety of expressions with vari-angle monitor, 10 types of Special Effects, NIKKOR interchangeable lens lineup and Full HD video at 60p.

... and more!

D5500



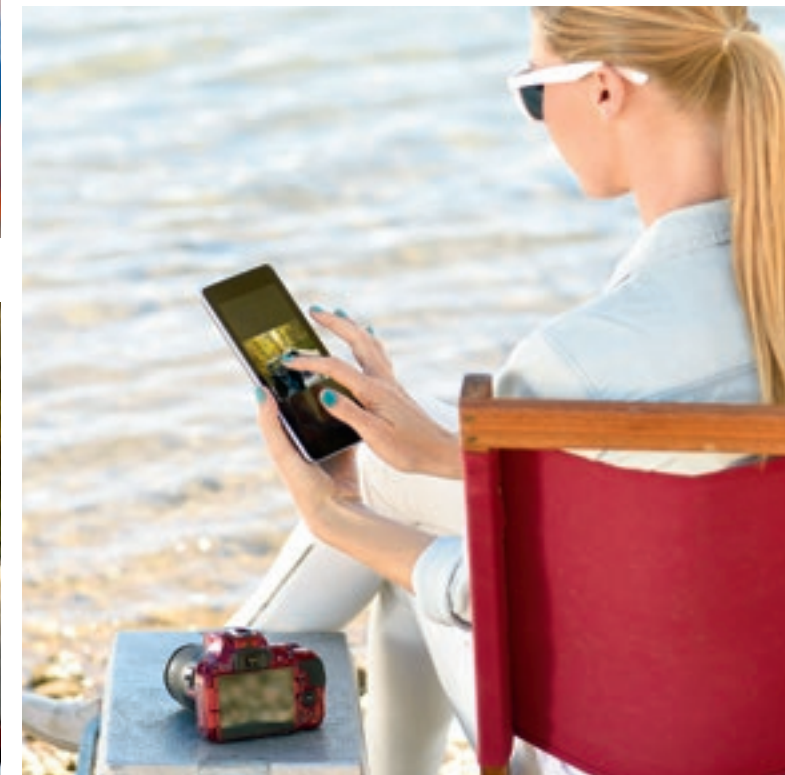
Impress friends with your beautiful pictures as soon as you shoot them.



Capture even subtle color gradations as vividly as you see them yourself.



Take blur- and noise-free pictures in low light using high ISO sensitivity and advanced noise reduction.



Transfer pictures to your smart device and share them instantly.



Track fast action through the viewfinder and capture it in sharp focus.



High or low? Find your own angle using the vari-angle monitor.

Handy, intuitive, fully connected

Operation at a touch

Touch screen

First-time D-SLR users will feel right at home with the D5500. The camera's touch-screen interface makes a range of operations incredibly intuitive to use. During live view with the vari-angle monitor, simply touch anywhere on the screen to focus, then release your finger to shoot*. You can also tap the screen to focus during movie recording, and use it to adjust settings like aperture and shutter speed whether in live view or viewfinder photography. Browsing through menus only takes a flick of a finger, and you can swipe left and right to move between pictures in playback, and pinch in and out to zoom. If you're worried about mistakes happening while shooting, there's an option to activate the touch screen during playback only. And of course, buttons are also available for conventional operation.

* Shooting by pressing the shutter-release button is also possible even after touch focusing.

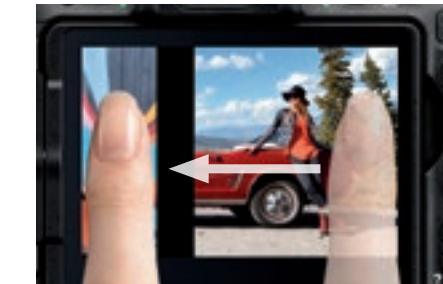
Share with friends, wherever you are

Share and shoot via built-in Wi-Fi/Wireless Mobile Utility/ NIKON IMAGE SPACE

Why keep amazing, D-SLR-quality pictures to yourself? Using built-in Wi-Fi, it's easy to transfer images from the D5500 to smart devices installed with Wireless Mobile Utility*. You can then share them on social media or online services like NIKON IMAGE SPACE, which gives Nikon camera owners 20 GB of storage for free.

It's also possible to shoot remotely with your smart device, allowing you to release the shutter after checking the image on the device's screen – perfect for self-portraits.

* Can be downloaded free from application stores.



Slide left and right to move between pictures during playback.



Pinch in and out to zoom.

Designed to be taken anywhere

Slim, lightweight, carbon-fiber monocoque body with deep grip/ Sophisticated exterior

Pick up the D5500, and you might be surprised by how small and light it is, while still offering a deep grip that's stable and comfortable in anyone's hand.

The body incorporates a carbon-fiber composite material that's strong and durable, but also remarkably lightweight. This provides the basis for an innovative monocoque structure, where the exterior covers support the interior, doing away with the bulky, skeletal framework that's used in most D-SLRs. The layout of the internal unit has also been redesigned to achieve a slim body with an easy-to-hold grip.

It's a stylish camera too, with a well-integrated surface, buttons and dials, and high-quality finish. Meanwhile, the supplied EN-EL14a Rechargeable Li-ion Battery gets you approx. 820 still shots per charge* in single-frame release mode. Combined with the new AF-S DX NIKKOR 55–200mm f/4–5.6G ED VR II with retractable lens barrel, the D5500 makes for an amazingly portable camera system, which you'll want to take out everywhere.

* Based on CIPA Standards.



Bottom view

D5500 + AF-S DX NIKKOR 55–200mm f/4–5.6G ED VR II

D5300 + AF-S DX VR Zoom-Nikkor 55–200mm f/4–5.6G IF-ED



Convenient vari-angle monitor with touch interface.



Smooth movie recording with touch autofocus.



Intuitive, quick setting change via touch interface.



Quick image transfer from the D5500 to a smartphone via built-in Wi-Fi.



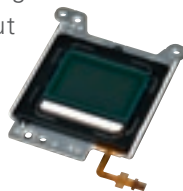
Wi-Fi remote shooting using a smartphone – ideal for group shots.

See it, keep it

Pictures that match the reality

Nikon DX-format CMOS image sensor/24.2 effective megapixels/EXPEED 4

Whenever you come across interesting scenes, the D5500 promises to preserve the moments of inspiration. And these aren't just snapshots: each high-resolution image delivers a three-dimensional look, showing rich color rendition and smooth tonal gradation, without washed-out highlights or blocked shadows. That's thanks to a combination of unrivaled Nikon technologies working together: the DX-format CMOS image sensor* delivering 24.2 effective megapixels, EXPEED 4 image-processing engine and NIKKOR lenses.



* Designed without an optical low-pass filter (OLPF). This fully brings out the resolving power of the high-pixel-count image sensor, combined with a more faithful rendering from NIKKOR lenses, delivering exquisite detail reproduction.

Moving in low light? No problem

Standard ISO from 100 to 25600 with superb noise reduction

When light is beautiful but scarce, such as during sunset and sunrise, the D5500's wide standard ISO range of 100 to 25600, combined with its noise-reduction function, allows you to keep shooting crisp, clean images. Using a high ISO setting enables you to shoot at faster shutter speeds, letting you take blur-free pictures with less noise at indoor events and parties without using a flash.

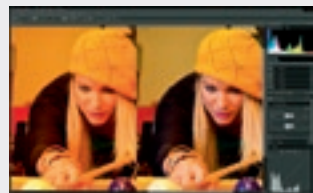


ISO 25600

Edit images to your heart's content | Capture NX-D/ViewNX 2

The creative process doesn't finish with shooting. Nikon's exclusive editing software draws out the full potential of your images. Capture NX-D enables you to obtain professional-looking results, offering a wide range of editing options for NEF images (Nikon's RAW), such as adjusting white balance, tone curve and exposure compensation. It also allows you to change an image's Picture Control and settings after shooting. ViewNX 2 lets you import and browse your stills and movies. Images with location data can be displayed on a digital map, and the software also incorporates movie-editing tools.

Note: Both types of software can be downloaded free from Nikon websites.



Capture NX-D



ViewNX 2

Bring the ideal look to each scene

Picture Control



PICTURE
CONTROL

Tailor your still images and movies according to what you want to express by using the D5500's built-in Picture Controls. Choose from Standard, Neutral, Vivid, Monochrome, Portrait, Landscape and Flat, a new option that provides you with optimal material for post-shoot editing. You can also adjust the parameter settings for preset options – including sharpness, contrast and the newly added clarity – within the camera, and save them for future shoots.



Monochrome



Portrait



Vivid

Don't let difficult lighting spoil a shot

Active D-Lighting/HDR

When shooting scenes with drastic contrasts in lighting, such as a subject backlit against the sky, the D5500 gives you two options. Active D-Lighting adjusts the contrast to render the scene in true-to-life brightness, and can be used for moving subjects. HDR* produces a single, striking image by taking two shots at different exposures with a single shutter release and combining the highlights and shadows of the two. This function works best with stationary subjects.

* Tripod recommended.





Photography that doesn't miss a beat

Get an intimate view of the action

Optical viewfinder

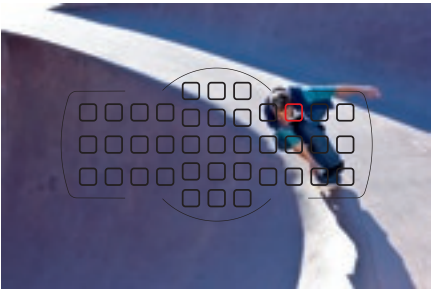
When you're capturing fast-moving action, you want a clear view of what's happening. That's when a D-SLR's optical viewfinder comes in handy. Whether you're shooting a sports match or a rock gig, you can follow your subjects in real time, letting you concentrate on shooting. The D5500's newly introduced eye sensor above the viewfinder makes the shooting process even smoother. Sensing when your eye moves away from the viewfinder, the camera turns on the monitor to display the image you've just shot, ensuring that you don't miss the playback.



Keep a lock on fast-moving subjects

39 focus points/Versatile AF-area modes

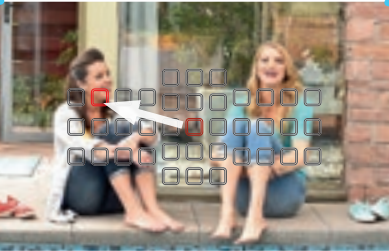
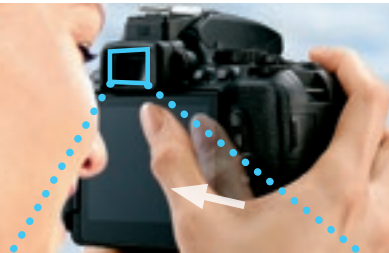
Some subjects move too quickly and erratically to maintain focus on. The D5500's autofocus system helps you acquire and keep track of your target with remarkable precision, using 39 focus points that cover a wide area of the frame. Choose from multiple AF-area modes depending on what you're shooting: single-point AF, dynamic-area AF, 3D-tracking and auto-area AF.



Intuitive control in viewfinder photography

Touch Fn

The D5500's touch screen gives you intuitive control over important settings during viewfinder photography. The newly introduced touch Fn (function) feature lets you make adjustments to a pre-assigned camera setting using your thumb, without looking away from the viewfinder. To assign, choose one of eight frequently used settings, such as ISO sensitivity, aperture and focus point selection. Touch Fn is particularly convenient when changing a focus point, because you can simply slide your thumb to move within the 39 points.



Quickly change the focus point by sliding your thumb over the touch screen, confirming it in the viewfinder.

Seize those split-second moments

5-fps continuous shooting with full AF performance

Sometimes the best moments last for just the blink of an eye. Fortunately, the D5500 can keep up with the action. Thanks to its high-speed continuous shooting rate of 5 frames per second (fps)* with full AF performance, you've got a much better chance of capturing the decisive moment – with vivid detail delivered by the high pixel count.

* Based on CIPA Guidelines.



Unleash your creative spark

Find a fresh point of view

Vari-angle LCD monitor/Touch shutter release



Discover a new perspective on your subjects, as you shoot them creatively from high and low angles. The D5500's vari-angle monitor ensures comfortable live view photography, whatever position you hold the camera in. The wide, 8.1-cm/3.2-in. screen opens up to 180° horizontally, and flips up and down from +180° to -90°. The touch interface makes it even easier to use, as you can simply touch to focus and release the shutter. Autofocus is accurate, with four AF-area modes available during live view photography: face-priority AF, wide-area AF, normal-area AF and subject-tracking AF.

Tailor-made modes for each scene

Scene modes/Scene auto selector



If you aren't sure what camera settings to use, you can let the D5500 decide for you. Its 16 scene modes give you optimized settings for a broad range of situations – whether you're at an indoor party or taking shots of pets. In live view, simply activate the scene auto selector, and the camera will pick the most appropriate mode.

Scene modes on the D5500 · Portrait · Landscape · Child · Sports · Close up · Night portrait · Night landscape · Party/ indoor · Beach/snow · Sunset · Dusk/dawn · Pet portrait · Candlelight · Blossom · Autumn colors · Food

Scene auto selector on the D5500 · Auto · Auto (flash off) · Portrait · Landscape · Close up · Night portrait

Give your pictures an artistic touch

Special Effects



Turn your stills and movies into unique works of art with the D5500. Take your pick from ten fun Special Effects – including super vivid, selective color and miniature effect – and apply them in-camera as you shoot. In live view shooting, the effects are shown in real time, allowing you to check how they'll look before taking the shot. Combined with the multiple angles delivered by the vari-angle monitor, this gives you endless possibilities of creating unique images.

Special Effects on the D5500 · Night vision · VI Super vivid · POP Pop · Photo illustration · Toy camera effect · Miniature effect · Selective color · Silhouette · High key · Low key

Create finished pictures on the spot

Retouch menu



Trim, resize or apply filter effects – adding the final touch to images can be done in-camera using the D5500's retouch menu. The options now include photo illustration and painting, and simple movie editing is also available.

Retouch menus on the D5500 · NEF (RAW) processing · Trim · Resize · D-Lighting · Quick retouch · Red-eye correction · Straighten · Distortion control · Perspective control · Fisheye · Filter effects · Monochrome · Image overlay · Color outline · Photo illustration · Color sketch · Miniature effect · Selective color · Painting · Edit movie



Shooting down from a high position, with the camera held away from the body



Shooting from a low angle



Close up (Scene mode)



VI Super vivid (Special Effects)



Selective color (Special Effects)



Silhouette (Special Effects)



Low key (Special Effects)



Painting (Retouch menu)

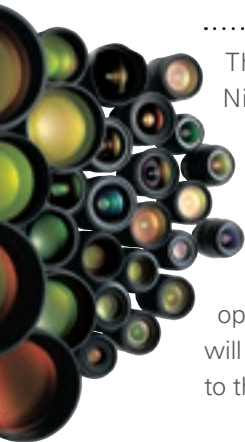
NIKKOR



AF-S DX NIKKOR 10-24mm f/3.5-4.5G ED

At its widest end of 10 mm, this lens covers a 109° angle of view – even wider than what you see with your own eyes. This attains dramatic perspectives, with minimized distortion at the edges.

More lenses, more variety
NIKKOR lenses



There's a very good reason why camera enthusiasts love Nikon: NIKKOR lenses. You'll probably be happy with the D5500's excellent kit lens, but if you want to diversify your creative options even more, there's a huge range of top-quality lenses to choose from. The NIKKOR lineup has an ideal lens for every scene and subject, each one designed and manufactured according to the strictest standards of optical quality. And they're not just for pros: even beginners will quickly appreciate the difference that NIKKOR lenses make to their still and video shooting.



AF-S DX NIKKOR 18-300mm f/3.5-6.3G ED VR

The ideal travel companion, this 16.7x ultrahigh-power zoom lens boasts great image quality and incredible versatility. Powerful, built-in Vibration Reduction, which offers an effect equivalent to a shutter speed 4.0 stops faster*, helps compensate camera shake when shooting hand-held.

* Based on CIPA Standards.



AF-S DX NIKKOR 35mm f/1.8G

The perfect option for creating beautiful portraits. Delivers images that combine amazing sharpness with gorgeous, natural bokeh. Also excels in low light, thanks to its fast aperture.



AF-S DX Micro NIKKOR 40mm f/2.8G

Designed for use at very close range, this small, lightweight lens lets you discover intricate details and delicate textures, and depict them against beautiful background bokeh.

Push your photography further



• Lens: AF-S DX NIKKOR 35mm f/1.8G • Image quality: 14-bit RAW (NEF) • Exposure: [M] mode, 1/125 second, f/3.5
• White balance: Auto • Sensitivity: ISO 400 • Picture Control: Neutral (applied in post-production) ©Dixie Dixon



Connecting an SB-500 Speedlight to the D5500 via an SC-28/SC-29 TTL Remote Cord enables lighting from various angles. Here, the flash is held backward and its light bounced off the top part of a white wall behind the photographer, evenly illuminating the subject.



Dramatic lighting, under your control
Built-in flash/Speedlights (optional)



Lighting is an essential element in photography, but it's not always easy to capture subjects exactly the way you want using only ambient light.

The D5500 gives you a comprehensive set of tools to control light and achieve your ideal image. Its built-in flash can produce properly exposed images at night, indoors or with backlighting. Moreover, employing optional flash units, such as the SB-500 Speedlight, enables additional control of the light. Illuminating your subject from one side*, for example, you can highlight its unique characteristics to create a more dramatic picture.

* Using a Speedlight off the D5500 requires a SC-28/SC-29 TTL Remote Cord for connection.



SB-500 on the D5500

Operate the camera from a distance

WR-R10/WR-T10 Wireless Remote Controllers (optional)

You don't always need to have your hands on the camera when shooting with the D5500. Using WR-R10/WR-T10 Wireless Remote Controllers, you can trigger the shutter from distances of up to 20 m/ 66 ft*, allowing you to get close to the action while remaining unobtrusive yourself. This is extremely helpful when you're capturing a sports match or animals in the wild.

* Approximate range at height of about 1.2 m/4 ft; varies with weather conditions and presence of obstacles.



Movies that fulfill your wildest dreams



Fast action, rendered amazingly smooth

Full HD D-Movie at 60p



Shooting and editing pictures are just part of the fun with the D5500: it's also a versatile HD video camera. Record all the action in high-quality Full HD and at a frame rate of 60p, which renders fast action incredibly smooth.

The D5500's in-camera Special Effects and vari-angle monitor help fuel your creativity further, while the NIKKOR lens lineup will make you the envy even of professional filmmakers.

Brilliant results, even under poor light

ISO 100 to 25600, versatile for any situation

Even when the light gets low, the D5500 still delivers impressive movie image quality. The ISO range is expandable up to ISO 25600. This means you can capture rich, clear motion when filming at indoor parties or nighttime street scenes using the camera alone – no extra lighting equipment required.

Connect instantly to TVs and monitors

HDMI output

The D5500's movies and stills may look good on the camera monitor – but just wait until you've seen them on an HDTV. It's easy to hook up the camera to external screens using its HDMI mini-pin connector (Type C). And since the D5500 is compatible with HDMI-CEC, you can operate it using a TV remote control from the comfort of your couch.

Shoot with a different flow

Interval timer shooting



Interval timer shooting menu

Movies aren't the only option for capturing sequences of events with the D5500. Its interval timer shooting mode lets you set the camera to take a series of pictures at fixed intervals, for up to 9999 frames. This sequence of high-quality stills can then be used to create stunning time-lapse movies*. If

you're shooting a scene where the brightness changes gradually, such as at sunrise or sunset, the D5500 now offers smooth exposure transitions between each image, for more natural-looking results with no flicker.

* Requires third-party software.



The exposure smoothing function automatically adjusts exposures to match previous shots, helping you create more natural-looking time-lapse movies of scenes like sunset and sunrise.
©Sam Ryan

Advanced audio features for more professional results

High-fidelity audio control/Built-in stereo microphone/ ME-1 Stereo Microphone (optional)

Sound quality is one of the biggest factors that distinguishes amateur videos from more professional productions. The D5500 has a quality built-in stereo microphone, and you can also attach an optional ME-1 Stereo Microphone, which picks up less noise caused by the lens operating the autofocus. Both microphones can be fine-tuned automatically, or manually in 20 incremental steps using the camera monitor.



Built-in microphone



Microphone sensitivity control



ME-1 on the D5500

Nomenclature



- | | | |
|--|---|---|
| 1 Infrared receiver for ML-L3 Remote Control (front) | 14 Flash mode button/Flash compensation button | 25 Information button |
| 2 Power switch | 15 Function button | 26 AE/AF lock button/Protect button |
| 3 Shutter-release button | 16 Connector cover (Accessory terminal, Connector for external microphone, USB and A/V connector) | 27 Playback button |
| 4 Movie-record button | 17 Lens release button | 28 L button |
| 5 Exposure compensation button/Adjusting aperture button/Flash compensation button | 18 Release mode button/Continuous shooting button/Self-timer button/Remote control button | 29 OK button |
| 6 Command dial | 19 Vari-angle monitor | 30 HDMI connector cover |
| 7 Live view switch | 20 Infrared receiver for ML-L3 Remote Control (rear) | 31 Memory card slot cover |
| 8 Mode dial | 21 Menu button | 32 Multi selector |
| 9 AF-assist illuminator/Self-timer lamp/Red-eye reduction lamp | 22 Eye sensor | 33 Playback zoom in button |
| 10 Built-in flash | 23 Viewfinder eyepiece | 34 Delete button |
| 11 Stereo microphone | 24 Diopter adjustment control | 35 Memory card access lamp |
| 12 Accessory shoe (for optional flash units) | | 36 Playback zoom out button/Thumbnails button/Help button |
| 13 Speaker | | 37 Battery-chamber cover |

38 Tripod socket

Type of camera	Single-lens reflex digital camera
Lens mount	Nikon F mount (with AF contacts)
Effective angle of view	Nikkor DX format; focal length equivalent to approx. 1.5× that of lenses with FX-format angle of view
Effective pixels	24.2 million
Image sensor	23.5 × 15.6 mm CMOS sensor
Total pixels	24.78 million
Dust-reduction system	Image Sensor Cleaning, Image Dust Off reference data (Capture NX-D software required)
Image size (pixels)	● 6000 × 4000 [L] ● 4496 × 3000 [M] ● 2992 × 2000 [S]
File format	• NEF (RAW); 12 or 14 bit, compressed • JPEG: JPEG-Baseline compliant with fine (approx. 1:4), normal (approx. 1:8) or basic (approx. 1:16) compression • NEF (RAW) + JPEG: Single photograph recorded in both NEF (RAW) and JPEG formats
Picture Control System	Standard, Neutral, Vivid, Monochrome, Portrait, Landscape, Flat; selected Picture Control can be modified; storage for custom Picture Controls
Storage media	SX (Secure Digital) and UHS-I-compliant SDHC and SDXC memory cards
File system	DCF 2.0, DPoP, Exif 2.3, PictBridge
Viewfinder	Eye-level pentamirror single-lens reflex viewfinder
Frame coverage	Approx. 95% horizontal and 95% vertical
Magnification	Approx. 0.82× w/o 150 mm f/1.4 lens at infinity, -1.0 m ⁻¹)
Eyepoint	17 mm (-1.0 m ⁻¹ ; from center surface of viewfinder eyepiece lens)
Dioptric adjustment	-1.7 to +0.5 m ⁻¹
Focusing screen	Type B BriteView Clear Matte Mark VII screen
Reflex mirror	Quick return
Lens aperture	Instant return, electronically controlled
Compatible lenses	Autofocus is available with AF-S and AF-I lenses; autofocus is not available with other type G and D lenses, AF lenses (IX NIKKOR and lenses for the F3AF are not supported), and AI-P lenses; non-CPU lenses can be used in mode M, but the camera exposure meter will not function The electronic rangefinder can be used with lenses that have a maximum aperture of f/5.6 or faster
Shutter type	Electronically controlled vertical-travel focal-plane shutter
Shutter speed	1/4000 to 30 s in steps of 1/3 or 1/2 EV; Bulb; Time
Flash sync speed	X=1/200 s.; synchronizes with shutter at 1/200 s or slower
Release modes	[S] (single frame), [CL] (continuous L), [CH] (continuous H), [B] (quiet shutter release), [T] (self-timer), [R] (delayed remote; ML-L3), [Q] (quick-response remote; ML-L3); interval timer photography supported
Frame advance rate	• [CL]: Up to 3 fps • [CH]: Up to 5 fps (JPEG and 12-bit NEF/RAW) or 4 fps (14-bit NEF/RAW) Note: Frame rates assume continuous-servo AF, manual or shutter-priority auto exposure, a shutter speed of 1/250 s or faster, Release selected for Custom Setting adt (AF-C priority selection) and other settings at default values
Self-timer	2 s., 5 s., 10 s., 20 s.; 1 to 9 exposures
Exposure metering mode	TTL exposure metering using 2016-pixel RGB sensor
Metering method	• Matrix: 3D color matrix metering II (type G, E and D lenses); color matrix metering II (other CPU lenses) • Center-weighted: Weight of 75% given to 8-mm circle in center of frame • Spot: Meters 3.5-mm circle (about 2.5% of frame) centered on selected focus point
Metering range (ISO 100, 1/1.4 lens, 20°C/68°F)	• Matrix or center-weighted metering: 0 to 20 EV • Spot metering: 2 to 20 EV
Exposure meter coupling	CPU
Exposure modes	Auto modes ([A] auto; [S] auto, flash off); programmed auto with flexible program ([P]); shutter-priority auto ([S]; aperture-priority auto ([A]), manual ([M]); scene modes ([S] portrait, [L] landscape, [C] child, [S] sports, [Cl] close up, [N] night portrait, [Ns] night landscape, [Pa] party/indoor, [Be] beach/snow, [Su] sunset, [d] dusk/dawn, [Pe] pet portrait, [c] candlelight, [Fl] blossom, [Ac] autumn colors, [Fo] food); special effects modes ([N] night vision, [V] super view, [PP] pop, [Pi] photo illustration, [To] toy camera effect, [Mi] miniature effect, [Sc] selective color, [Si] silhouette, [Hi] high key, [Lo] low key)
Exposure compensation	Can be adjusted by -5 to +5 EV in increments of 1/3 or 1/2 EV in P, S, A, M, SCENE and [M] modes
Exposure bracketting	3 shots in steps of 1/3 or 1/2 EV
Exposure lock	Luminosity locked at detected value with [LK] button
ISO sensitivity (Recommended Exposure Index)	ISO 100 to 25600 in steps of 1/3 EV; auto ISO sensitivity control available
Active D-Lighting	Auto, extra high, high, normal, low, off
ADL bracketting	2 shots
Autofocus	Nikon Multi-CAM 4800DX autofocus sensor module with TTL phase detection, 39 focus points (including 9 cross-type sensors), and AF-assist illuminator (range approx. 0.5 to 3 m/1 ft 8 in. to 9 ft 10 in.)
Detection range	-1 to +19 EV (ISO 100, 20°C/68°F)
Lens servo	• Autofocus (AF): Single-servo AF (AF-S); continuous-servo AF (AF-C); auto AF-S/AF-C selection (AF-A); predictive focus tracking activated automatically according to subject status • Manual focus (MF). Electronic rangefinder can be used
Focus point	Can be selected from 39 or 11 focus points
AF-area modes	Single-point-locked, 9-, 21- or 39-point dynamic-area AF, 3D-tracking, auto-area AF
Focus lock	Focus can be locked by pressing shutter-release button half way (single-serVO AF) or by pressing [LK] button
Built-in flash	Yes Yes Yes No Yes VI POP P.S.A.M.Tf: Auto flash with auto pop-up P.S.A.M.Tf: Manual pop-up with button release
Guide number	Approx. 12/39, 12/39 with manual flash (m/ft, ISO 100, 20°C/68°F)

Flash control	TTL: i-TTL flash control using 2016-pixel RGB sensor is available with built-in flash; i-TTL balanced fill-flash for digital SLR is used with matrix and center-weighted metering, standard i-TTL flash for digital SLR with spot metering
Flash modes	Auto, auto with red-eye reduction, auto slow sync, auto slow sync with red-eye reduction, fill-flash, red-eye reduction, slow sync, slow sync with red-eye reduction, rear-curtain with slow sync, rear-curtain sync, off
Flash compensation	Can be adjusted by -3 to +1 EV in increments of 1/3 or 1/2 EV in P, S, A, M and SCENE modes
Flash-ready indicator	Lights when built-in flash or optional flash unit is fully charged; blinks after flash is fired at full output
Accessory shoe	ISO 518 hot-shoe with sync and data contacts and safety lock
Nikon Creative Lighting System (CLS)	Advanced Wireless Lighting supported with SB-910, SB-900, SB-800, SB-700 or SB-500 as a master flash or SU-800 as commander; Flash Color Information Communication supported with all CLS-compatible flash units
Sync terminal	AS-15 Sync Terminal Adapter (available separately)
White balance	Auto, incandescent, fluorescent (7 types), direct sunlight, flash, cloudy, shade, preset manual, all except preset manual with fine-tuning
White balance bracketing	3 shots in steps of 1
Live view lens servo	• Autofocus (AF): Single-servo AF (AF-S); full-time-servo AF (AF-F) • Manual focus (MF)
AF-area modes	Face-priority AF, wide-area AF, normal-area AF, subject-tracking AF
Autofocus	Contrast-detect AF anywhere in frame (camera selects focus point automatically when face-priority AF or subject-tracking AF is selected)
Automatic scene selection	Available in S and Q modes
Movie metering	TTL exposure metering using main image sensor
Movie metering method	Matrix
Frame size (pixels) and frame rate	• 1920 × 1080, 60p (progressive)/50p/30p/25p/24p, ★high/normal • 1280 × 720, 60p/50p, ★high/normal • 640 × 424, 30p/25p, ★high/normal Frame rates of 30p (actual frame rate 29.97 fps) and 60p (actual frame rate 59.94 fps) are available when NTSC is selected for video mode; 25p and 50p are available when PAL is selected for video mode; actual frame rate when 24p is selected is 23.976 fps
File format	MOV
Video compression	H.264/MPEG-4 Advanced Video Coding
Audio recording format	Linear PCM
Audio recording device	Built-in or external stereo microphone; sensitivity adjustable
Maximum length	29 min. 59 s (20 min. in 1920 × 1080, 60p/50p, 3 min. in miniature effect mode)
ISO sensitivity	ISO 100 to 25600
Monitor	8.1-cm/3.2-in. (3.2), approx. 1037k-dot (720 × 480 × 3 = 1,036,800 dots), TFT vari-angle LCD touch screen with 170° viewing angle, approx. 100% frame coverage, brightness adjustment and eye-sensor controlled on/off
Playback	Full-frame and thumbnail (4, 12 or 80 images or calendar) playback with playback zoom, movie playback, photo and/or movie slide shows, histogram display, highlights, photo information, location data display, auto image rotation, picture rating and image comment (up to 36 characters)
USB	Hi-Speed USB; connection to built-in USB port is recommended
Video output	NTSC, PAL
HDMI output	Type C HDMI connector
Accessory terminal	Wireless remote controllers: WR-1, WR-R10 (available separately), Remote cord: MC-DC2 (available separately), GPS units: GP-1/GP-1A (available separately)
Audio input	Stereo mini-pin jack (3.5-mm diameter); supports optional ME-1 Stereo Microphone
Wireless standards	IEEE 802.11b, IEEE 802.11g
Communications protocols	• IEEE 802.11b: DSSS/CCK • IEEE 802.11g: OFDM
Operating frequency	2412 to 2462 MHz (channels 1 to 11)
Range (line of sight)	Approx. 30 m/98 ft (assumes no interference; range may vary with signal strength and presence or absence of obstacles)
Data rate	54 Mbps; maximum logical data rates according to IEEE standard; actual rates may differ
Security	• Authentication: Open system, WPA2-PSK • Encryption: AES
Wireless setup	Supports WPS
Access protocols	Infrastructure
Supported languages	Arabic, Bengali, Bulgarian, Chinese (Simplified and Traditional), Czech, Danish, Dutch, English, Finnish, French, German, Greek, Hindi, Hungarian, Indonesian, Italian, Japanese, Korean, Marathi, Norwegian, Persian, Polish, Portuguese (Portugal and Brazil), Romanian, Russian, Serbian, Spanish, Swedish, Tamil, Telugu, Thai, Turkish, Ukrainian, Vietnamese
Battery	One EN-EL14a Rechargeable Li-ion Battery
AC adapter	EH-5b AC Adapter; requires EP-5A Power Connector (available separately)
Tripod socket	1/4 in. (ISO 1222)
Dimensions (W × H × D)	Approx. 124 × 97 × 70 mm/4.9 × 3.9 × 2.8 in.
Weight	Approx. 470 g/1 lb 0.6 oz with battery and memory card but without body cap; approx. 420 g/14.9 oz (camera body only)
Operating environment	Temperature: 0 to 40°C/32 to 104°F; humidity: 85% or less (no condensation)
Supplied accessories	EN-EL14a Rechargeable Li-ion Battery, MH-24 Battery Charger, DK-25 Rubber Eyecup, UC-E23 USB Cable, EG-CP16 Audio/Video Cable, AN-DC3 Camera Strap, BF-B1 Body Cap
(may differ by country or area)	



HDMI
HIGH-DEFINITION MULTIMEDIA INTERFACE

 WARNING	TO ENSURE CORRECT USAGE, READ MANUALS CAREFULLY BEFORE USING YOUR EQUIPMENT. SOME DOCUMENTATION IS SUPPLIED ON CD-ROM ONLY.
--	--

