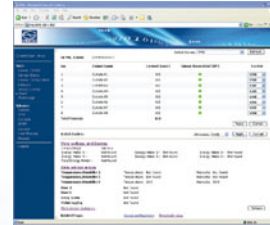


CLEVER NPM also has the following special functions:

1. Current consumption measurement: automatically record the current consumption in unit time;
2. Keep the original state: make sure the original state of each outlet is kept when reset;
3. User-defined alarm;
4. System automatic alarm when;
5. Daisy chain function;
6. Log record;
7. User management;

Alarming methods of CLEVER NPM:

The indicator on NPM controlling panel flashes and the buzzer alarms;
The indicator on the Web interface flashes and the buzzer in PC alarms;
Automatically sent E-mail to system administrator;
SNMP sends alarm information;



Software system of CLEVER NPM:

1. Embedded controlling software system (NPM3100, NPM4100, NPM5100, PCDS) is multi-user operating system which support software update;
2. Windows desktop controlling software system (NPM2000, NPM3000, NPM4000, NPM5000) is single user operating system;

CLEVER NPM:

Multi-standard sockets, can meet the choice of customers from all over the world;
Widely applied to the power voltage as 110VAC, 220VAC, 380VAC;
The timing turn on/off and current consumption measurement are environment-friendly and energy-saving.

2. NPM Part Number Explanation

Code:



N A 3 1 1 C 08 1 2

N: NPM

A: function category

3: product series

1: product type

2: additional function

1: load current code

08: outlet quantity

C: socket standard

1: system version

3. NPM3100 Basic Introduction



Main Characteristics of NPM3100

Remotely monitoring, controlling and managing function:

- Current consumption measurement;
- Keep the original state;
- Set the limiting value to alarm;
- System automatic alarm;
- Daisy-chain;
- Log record;
- User management;



(frontal of the product)



(back of the product)

Alarming Methods of CLEVER NPM:

- The indicator on NPM controlling panel flashes and the buzzer alarms;
- The indicator on the Web interface flashes and the buzzer in PC alarms;
- Automatically send E-mail to system administrator;
- SNMP send alarming information;

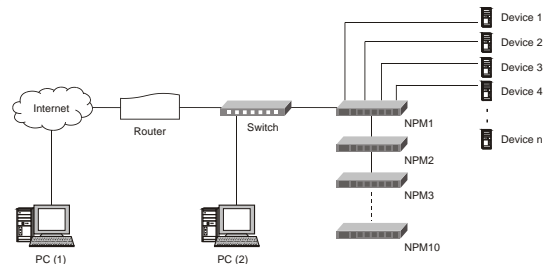
Software system:

Embedded controlling software system is multi-user operating system which support software update, can access by:

- Web, through IE;
- SNMP (V1/V2/V3), through standard network working station;
- Telnet, SSH, through command-line console;




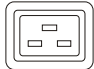
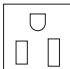
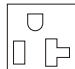
chart of anti-fall device



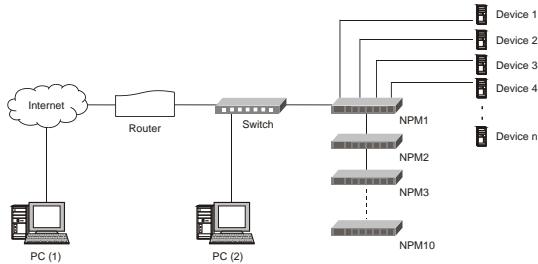
NPM3100 Technical Performance Form

Main function	Technical instruction	Product classification			
		Monitor		Control	
		A	B	C	D
Monitoring	Total load current	●	●	●	●
	Load current of each outlet		●		●
	On/Off state of each outlet		●	●	●
	System operating state	●	●	●	●
	Temperature/Humidity	●	●	●	●
	Smog sensor	●	●	●	●
	Door sensor	●	●	●	●
	Water logging sensor	●	●	●	●
Controlling	On/Off of each outlet			●	●
	Set the interval time of outlets' sequential on/off			●	●
	Set the on/off time of each outlet			●	●
Keep the original state	Keep the original state of each outlet when reset			●	●
Set the limiting value to alarm	The limiting range of total load current	●	●	●	●
	The limiting range of the load current of each outlet		●		●
	The limiting range of temperature and humidity	●	●	●	●
System automatic alarm	The total load current exceeds the limiting value	●	●	●	●
	The load current of individual outlet exceeds the limiting value		●		●
	Temperature/Humidity exceeds the limiting value	●	●	●	●
	Individual outlet goes wrong		●	●	●
	Smog	●	●	●	●
	Water-logging	●	●	●	●
	Door opening	●	●	●	●
Alarming method	The indicator on NPM controlling panel flashes and the buzzer alarms				
	The indicator on the Web interface flashes and the buzzer in PC alarms				
	Automatically send E-mail to system administrator				
	SNMP sends alarm information				
Current consumption measurement	Automatically record the current consumption in unit time				
Daisy-chain	Daisy-chain 10pcs NPM at most by radial link method				
Log record	Record and save the alarming information of NPM, check and export the alarming records				
User management	Set user's right				
Software system	Embedded controlling software system(multi-user operating, support software update)				
Accessing method	Web, access through IE				
	SNMP (V1/V2/V3), access to control through standard network working station				
	Telnet, SSH, access to control through command controlling station				

Input/Outlet Characteristics

Main function	Item	Parameter
Input characteristic	Rated input voltage	110/220VAC 50/60 Hz
	Input standard	IEC60309 industrial plug/IP44
	Cable length	3M
	Max load current	32A
Outlet characteristic	Outlet socket standard	 IEC320 C13  IEC320 C19
		 NEMA 5-15R  NEMA 5-20R
	Outlet quantity	8
		12 (front 8, back 4)
	On/Off state of each outlet	LED displays
	Rated outlet voltage	110/220VAC
Sensor port	Max total load current	32A
	Temperature/Humidity sensor port	3
	Smog sensor port	1
	Water logging sensor port	1
	Door sensor port	2
Mounting method	Spare sensor port	1
	Horizontal	Occupying 1U rack space
Case color	Color	Black

IEC320 C13 sockets of NPM3100 has two forms: socket with anti-fall device and without anti-fall device.



3.1 Basic introduction of NPM3100 A series



NA311C0812

Main functions of NPM3100 A series:

1. Remotely monitoring:

- Total load current
- System operating state
- T/H, smog, door opening and water-logging state

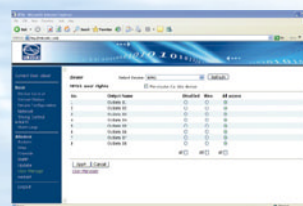
2. Set the limiting value to alarm

- Limiting range of total load current
- Limiting range of T/H

3. System automatic alarm when the limiting range is exceeded

4. Current consumption measurement (optional)

5. Embedded controlling software system



(frontal of the product)



(back of the product)

Product model example

Product code	Front		Back		Load current (A)	Cable length
	Socket standard	Outlet quantity	Socket standard	Outlet quantity		
NA311C0812	IEC320 C13	8	NO	0	16	3M
NA311E0812	IEC320 C19	4	IEC320 C19	4	16	3M
NA311M0812	NEMA 5-15R	8	NO	0	16	3M
NA311N0812	NEMA 5-20R	8	NO	0	16	3M
NA311H1212	IEC320 C13	8	IEC320 C19	4	16	3M
NA311H1212	NEMA 5-15R	8	NEMA 5-20R	4	16	3M
NA311H1212	NEMA 5-20R	8	NEMA 5-15R	4	16	3M

NPM3100 series: 1. IEC320 C13 sockets have two forms: socket with anti-fall device and without anti-fall device.

2. Load current has 16A and 32A.

The detailed product model list please contact Clever sales department or local distributor.

3.2 Basic introduction of NPM3100 B series



NB311C0812

Main functions of NPM3100 B series:

1. Remotely monitoring:

- Total load current
- Load current of each outlet
- Power on/off state of each outlet
- System operating state
- T/H, smog, door opening and water-logging state

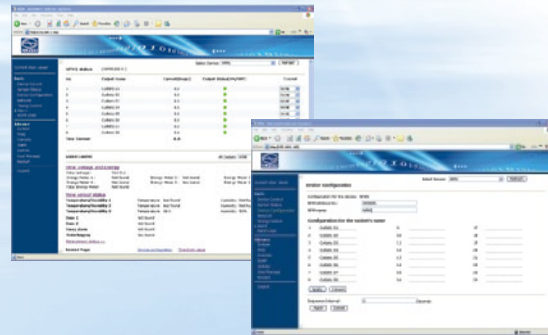
2. Set the limiting value to alarm

- Limiting range of total load current
- Limiting range of the load current of each outlet
- Limiting range of T/H

3. System automatic alarm when the limiting range is exceeded

4. Current consumption measurement (optional)

5. Embedded controlling software system (multi-user operation, support software update)



(frontal of the product)



(back of the product)

Product model example

Product code	Front		Back		Load current (A)	Cable length
	Socket standard	Outlet quantity	Socket standard	Outlet quantity		
NB311C0812	IEC320 C13	8	NO	0	16	3M
NB311E0812	IEC320 C19	4	IEC320 C19	4	16	3M
NB311M0812	NEMA 5-15R	8	NO	0	16	3M
NB311N0812	NEMA 5-20R	8	NO	0	16	3M
NB311H1212	IEC320 C13	8	IEC320 C19	4	16	3M
NB311H1212	NEMA 5-15R	8	NEMA 5-20R	4	16	3M
NB311H1212	NEMA 5-20R	8	NEMA 5-15R	4	16	3M

NPM3100 series: 1. IEC320 C13 sockets have two forms: socket with anti-fall device and without anti-fall device.

2. Load current has 16A and 32A.

The detailed product model list please contact Clever sales department or local distributor.

3.3 Basic introduction of NPM3100 C series



NC311M0812

Main functions of NPM3100 C series:

1. Remotely monitoring:

- Total load current
- Power on/off state of each outlet
- System operating state
- T/H, smog, door opening and water-logging state

2. Remotely controlling

- Power on/off of each outlet
- Set the interval of sequential power on/off of the outlets
- Set the time to power on/off of the outlets

3. Set the limiting value to alarm

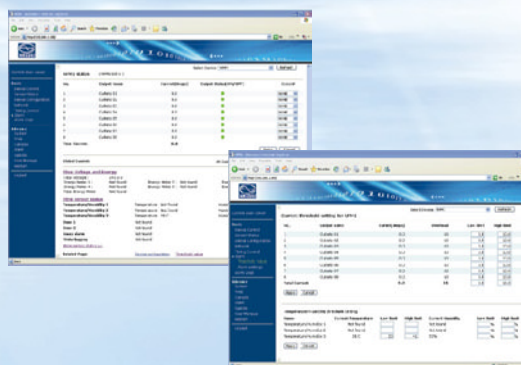
- Limiting range of total load current
- Limiting range of T/H

4. Keep the original state of each outlet when reset

5. System automatic alarm when the limiting range is exceeded

6. Current consumption measurement (optional)

7. Embedded controlling software system



(frontal of the product)



(back of the product)

Product model example

Product code	Front		Back		Load current (A)	Cable length
	Socket standard	Outlet quantity	Socket standard	Outlet quantity		
NC311C0812	IEC320 C13	8	NO	0	16	3M
NC311E0812	IEC320 C19	4	IEC320 C19	4	16	3M
NC311M0812	NEMA 5-15R	8	NO	0	16	3M
NC311N0812	NEMA 5-20R	8	NO	0	16	3M
NC311H1212	IEC320 C13	8	IEC320 C19	4	16	3M
NC311H1212	NEMA 5-15R	8	NEMA 5-20R	4	16	3M
NC311H1212	NEMA 5-20R	8	NEMA 5-15R	4	16	3M

NPM3100 series: 1. IEC320 C13 sockets have two forms: socket with anti-fall device and without anti-fall device.

2. Load current has 16A and 32A.

The detailed product model list please contact Clever sales department or local distributor.

3.4 Basic introduction of NPM3100 D series



ND311N0812

Main functions of NPM3100 D series:

1. Remotely monitoring

- Total load current
- Load current of each outlet
- Power on/off state of each outlet
- System operating state
- T/H, smog, door opening and water-logging state

2. Remotely controlling

- Power on/off of each outlet
- Set the interval of sequential power on/off of the outlets
- Set the time to power on/off of the outlets

3. Set the limiting value to alarm

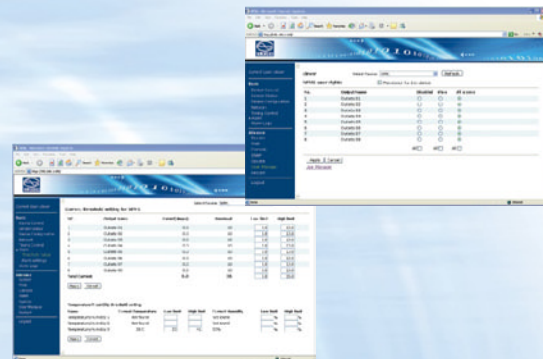
- Limiting range of total load current
- Limiting range of the load current of each outlet
- Limiting range of T/H

4. Keep the original state of each outlet when reset

5. System automatic alarm when the limiting range is exceeded

6. Current consumption measurement (optional)

7. Embedded controlling software system (multi-user operation, support software update)



(frontal of the product)



(back of the product)

Product model example

Product code	Front		Back		Load current (A)	Cable length
	Socket standard	Outlet quantity	Socket standard	Outlet quantity		
ND311C0812	IEC320 C13	8	NO	0	16	3M
ND311E0812	IEC320 C19	4	IEC320 C19	4	16	3M
ND311M0812	NEMA 5-15R	8	NO	0	16	3M
ND311N0812	NEMA 5-20R	8	NO	0	16	3M
ND311H1212	IEC320 C13	8	IEC320 C19	4	16	3M
ND311H1212	NEMA 5-15R	8	NEMA 5-20R	4	16	3M
ND311H1212	NEMA 5-20R	8	NEMA 5-15R	4	16	3M

NPM3100 series: 1. IEC320 C13 sockets have two forms: socket with anti-fall device and without anti-fall device.

2. Load current has 16A and 32A.

The detailed product model list please contact Clever sales department or local distributor.