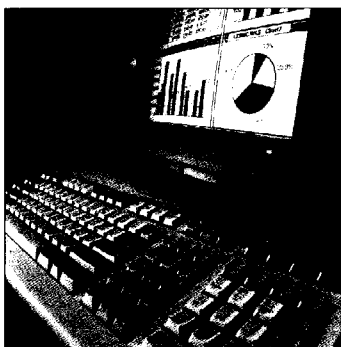


# Aficio 200



## The Merits of a Copier-printer Duo

When you want to handle your growing printing needs, the modular Aficio 200 can help. You can have all the extra advantages a copier offers: scanning from the platen glass, huge paper capacity and flexibility combined with an unprecedented print speed of 20 prints per minute! The optional duplex unit handles paper sizes from A5 to A3. Perfect for use in small offices and work groups in larger companies.



### **Spectacular Speed and Paper Size, Matchless Output Quality**

The Aficio 200 offers a remarkable printing speed of 20 ppm (A4 long-edge). It handles paper sizes from A5 to A3 even in duplex mode! Add to this 600 dpi output quality in both PCL5e and optional PostScript level 2 and print-outs will be back on your desk in no time.

### **Interfaces and Drivers**

The Aficio 200 printer module offers a standard bi-directional parallel and a serial interface that allow you to print in Windows 3.1x and Windows 95. With the optional Printer Enhance Unit PostScript printing becomes available for both Windows and Apple Macintosh environments.

### **Expandable Memory Capacity**

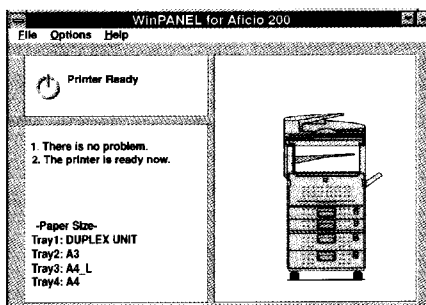
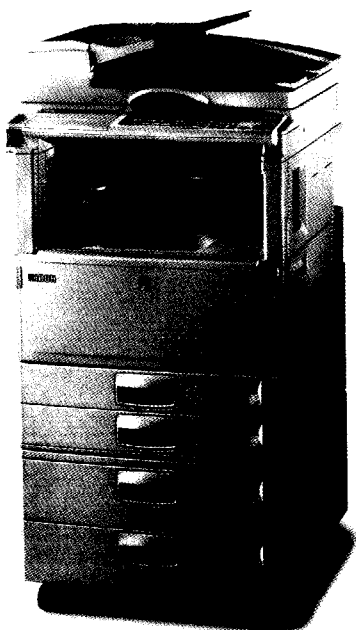
With a standard memory of 2MB which can be upgraded up to 34MB and an optional 540MB hard disk for print spooling and font storage, the Aficio 200 tackles your printing jobs with unprecedented ease.

### **Formidable Paper Capacity**

The print module of the Aficio 200 also uses the paper capacity of the copier and offers you a standard 2 x 250-sheet paper supply along with an optional paper bank of 2 x 500 sheets, plus a 100-sheet bypass. When your first paper source is out of paper, Auto Paper Tray Switching sees to it that paper is picked from another source. As such the Aficio 200 offers you an unprecedented paper yield of 1,600 sheets.

### **On-line Copying and Sorting**

Instead of printing a document on your local printer, going to a stand-alone copier and copying the required number of sets for further distribution, the Aficio 200 lets you turn printing into on-line copying. You send your document to the Aficio 200 which prints, duplexes and electronically sorts your print job as many times as you need. By alternating paper feed orientation this offsets each set and maintains optimum document quality as resolution is not lost by copying printed originals. Every set is an original! Thanks to the split level-reception copies and prints are output on different trays in the Aficio 200's cavity, for easy removal.



**RICOH**  
DIGITAL  
SOLUTIONS

## A New Way of Copying

The Aficio 200 is a copier with exceptional output quality available only from digital units. Its highly unconventional design stands out because of its unrivalled compactness. Unlike other copiers, the output trays of the Aficio 200 are fully integrated in the heart of the copier itself with an output capacity of 500 sheets.

This results in incredible space saving and an extremely small footprint.

### **Crisp and Clear Digital Quality**

Ricoh's Aficio 200 boasts image processing possibilities that offer you the highest quality at a speed of up to 20 copies per minute. With a combination of 400 dpi resolution, 256 shades of grey and ultrafine toner, the Aficio 200 consistently provides you with crisp and clear copies. Three copy modes see to it that the output quality always meets the strictest standards. If you use the Text Mode, it optimises copier settings for output of text and solid images, while the Photo Mode treats graphic images and photographs faultlessly. The Text/Photo Mode sees to it that you always have impeccable copies from originals with both text and photo images. Even the finest details are reproduced.

Magazine articles, fine photography and intricate graphic layouts appear as clearly as plain text. A wide Zoom range of 25% to 400% in 1% increments makes it easy for you to enlarge or reduce documents and offers you a new degree of control over paper use.

### **Simple and Straightforward**

Thanks to its digital technology, the Aficio 200 gives you sophisticated paper handling, turning complicated tasks into simple processes. It scans your originals, stores them in its 4MB (max. 12MB) RAM memory and - no matter how elaborate the job - executes all your instructions. Duplexing simplifies the common but often complicated task of two-sided copying and saves you a lot of paper along the way. The Aficio 200 digitally runs every copy job from its memory, offering you a number of advantages:

#### **• Scan Once, Copy Many.**

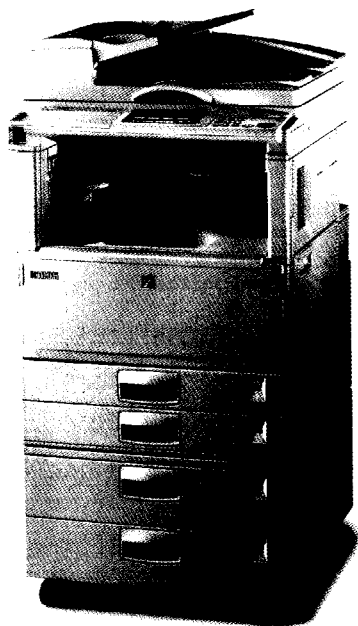
The Aficio 200 is a digital copier, which means your originals are digitally scanned and stored in the unit's memory from which it can be printed as many times as you want. One, single smooth scan pass suffices to generate multiple copies later, all at high speed, in original quality and on paper sizes from A5 to A3. Highly efficient! Moreover, it reduces wear and tear and the chances for a paper jam. The Aficio 200 can be equipped with an optional Document Feeder. This means an original has to be fed through the Document Feeder only once, which minimises the possibility of original damage. Moreover, a single scan run reduces feeding noise and wear on the scanner to an absolute minimum.

#### **• Electronic Sorting**

The Electronic Sorting function, which is standard on the Aficio 200, is a unique feature that takes an enormous amount of work out of your hands. While scanning your document and storing the information in its memory, the Aficio 200 copies your first set. You can take this first set along with your originals, leaving it to the Aficio 200 to do the rest. It then neatly stacks the rest of your copied sets in easy-to-remove batches by printing from its memory and alternately choosing from paper trays with opposite paper orientation.

#### **• Image Rotation**

No need to worry about the orientation of an original (A4 or A4R) any longer. Thanks to its Image Rotation function the Aficio 200 automatically rotates the image to match the orientation of the paper in the tray. This means originals cannot be placed the wrong way anymore, thus reducing wasted time and copies. If a tray is out of paper, the Aficio 200 will automatically switch to another tray with the same paper size, even though the paper orientation is different. So, as long as you have the correct paper size available in one of the paper trays, the Aficio 200 will copy through to completion.



## Technical Specifications

### Printer Controller Type 250

Continuous Print Speed: 20 ppm  
(A4, 600 dpi)

Resolution: 300/600 dpi  
(with edge enhancement technology,  
equivalent to 1200 dpi)

CPU: Intel: 80960JF-25

Printer Languages:

standard: Enhanced PCL5 - emulation

option: Adobe PostScript™ Level 2 -  
emulation

Automatic Emulation Switching

Fonts:

35 Adobe Type 1 Fonts

35 Intellifonts™

10 TrueType™ Fonts

(all HP-Laserjet-compatible Fonts)

Memory:

standard: 2 MB

option: 34 MB (Max. upgradable with  
standard 72-pins SIMM-modules)

540 MB HDD (option)

Interface: IEEE 1284 Bi-directional  
Centronics, RS232C, Local Talk (optional  
with PostScript™ Level 2 - emulation)

Driver:

standard: PCL5e:

- Windows 3.1 / Windows 95

option: PostScript™ Level 2 - emulation:

- Windows 3.1 / Windows 95

- Macintosh (PPD File)

Duplex Printing: with optional Duplex Unit

Sorting: with optional Printer HDD Type 250

Paper Capacity: Max. 5 trays,  
max. 1600 sheets

Paper Output Capacity: Max. 3 output trays  
(user-definable)

500 sheets (internal tray)

+ 100 sheets (external tray)

+ 125 sheets (optional one-bin tray)

Paper Sizes: Max. A3, Min. A5

Printer Status Feedback Utility:

for Windows 3.1 / Windows 95

### Options

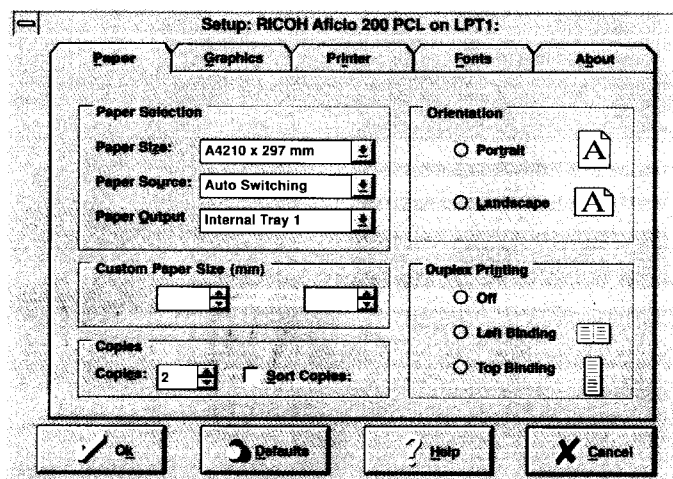
Printer Enhance Unit Type 250

(PostScript™ Level 2 - emulation)

Printer HDD Type 250

(Printer Hard Disk Drive, 540 MB)

Specifications are only applicable to English Windows.  
Specifications and external appearance  
are subject to change without notice.  
The colour(s) of the actual product may vary from  
the colour(s) shown in this brochure. RICOH believes  
in conserving the earth's precious natural resources.  
This brochure is printed on environmentally friendly paper.



## Technical Specifications

### Copier

Configuration:	Desktop
Copying Process:	Dry electrostatic transfer system
Scanning Method:	Flatbed solid state scanner
Resolution:	400 dpi
Grey Scale:	256
Memory Capacity:	4 MB RAM (standard)
Originals:	Book/sheet (Max. A3)
Copy Paper Size:	Max. A3, Min. A5 (A6 for bypass)
Copy Paper Weight:	
Paper Tray:	60 to 90 g/m <sup>2</sup>
Bypass:	52 to 157 g/m <sup>2</sup>
Multiple Copying:	Up to 99
Copy Paper Capacity:	
600 sheets: 2 x 250 sheets paper tray + 100 sheets (bypass tray)	
Copy Paper Output Capacity:	
500 sheets (internal tray) + 100 sheets (external tray)	
Copying Speed:	20 copies/minute (A4)
First Copy Speed:	8.8 seconds
Warm-up Time:	Less than 35 seconds
Magnification Ratios:	
7 reductions: 25, 50, 65, 71, 75, 82, 93% 100%	
5 enlargements: 100, 115, 122, 141, 200, 400%	
Zoom:	25-400%
Electronic Sorting	
Copy Mode:	Text, Text/Photo, Photo
Auto Paper Selection (APS)	
Auto Magnification Selection (AMS)	
Auto Tray Selection	
Directional Magnification (% and/or mm)	
Auto Image Rotation	
Auto Start	
Combine Modes:	2 in 1, 4 in 1, 8 in 1, 16 in 1

Editing:	Double Copies, Erase Center/Border, Image Repeat, Positive/Negative, Overlay Image, Duplex/Series Copies, Book Copy
User Programs:	2 modes
User Codes:	20 (4 digits)
Power Source:	220-240V, *110-115V 50/60Hz
Power Consumption:	
Max.: 1.2 kW (Full system with options) Ave.: 470 Wh	
Dimensions (W x D x H):	
Copier Only:	550 x 580 x 652 mm
Weight:	
Copier Only:	Less than 57 kg

\*Available in Taiwan

### Options

<b>1. DF 43 ADF</b>	
Original Size:	Max. A3, Min. A5
Original Weight:	52-105 g/m <sup>2</sup>
Stack Capacity:	30 sheets (80 g/m <sup>2</sup> )
Power Consumption:	40 W
Dimensions (W x D x H):	550 x 470 x 120 mm
Weight:	Less than 8 kg
<b>2. DF 65 ARDF</b>	
Original Size:	
Simplex original: Max. A3, Min. A5 Duplex original: Max. A3, Min. B5	
Original Weight:	52-105 g/m <sup>2</sup>
Stack Capacity:	30 sheets (80 g/m <sup>2</sup> )
Power Consumption:	40 W
Dimensions (W x D x H):	550 x 470 x 130 mm
Weight:	Less than 11 kg

### 3. PS 330 Paper Tray Unit

Paper Capacity:	2 x 500 sheets
Paper Size:	Max. A3, Min. A5
Paper Weight:	60-90 g/m <sup>2</sup>
Power Consumption:	30-40 W
Dimensions (W x D x H):	530 x 565 x 327 mm
Weight:	20 kg

### 4. PT 200 One-Bin Tray

Paper Capacity:	125 sheets
Paper Size:	Max. A3, Min. A5
Paper Weight:	60-90 g/m <sup>2</sup>
Power Consumption:	29 W
Dimensions (W x D x H):	442 x 410 x 105 mm
Weight:	Less than 2 kg

### 5. AD 330 Duplex Unit

Paper Capacity:	1 sheet
Paper Size:	Max. A3, Min. A5
Paper Weight:	60-90 g/m <sup>2</sup>
Dimensions (W x D x H):	514 x 450 x 77 mm
Weight:	6 kg

### 6. Other Options

Platen Cover Type 250
Copier Feature Expander* 4 MB Type 250
Copier Feature Expander* 8 MB Type 250

### Modules

Fax module
Printer module

Specifications and external appearance are subject to change without notice. The colour(s) of the actual product may vary from the colour(s) shown in this brochure. RICOH believes in conserving the earth's precious natural resources. This brochure is printed on environmentally friendly paper.

### \*Copier Memory Matrix (RICOH 6% chart)

	A4 simplex	A3 simplex	A3 duplex
Standard 4 MB	35 sheets	1 sheet	N/A
Plus optional 4 MB (8 MB)	99 sheets	35 sheets	17 sheets
Plus optional 8 MB (12 MB)	99 sheets	70 sheets	35 sheets



## Technical Specifications

### Fax Option Type 250

Type:	Fax-module for Aficio 200
Circuit:	PSTN, PABX, ISDN (option)
Compatibility:	ITU-T (CCITT) Group 3 machines, Group 4 (option)
Document Input Size:	
Length:	105-420 mm
Width:	148-304 mm
Resolution:	
Standard:	200 x 100 dpi
Detail:	200 x 200 dpi
Super Fine:	400 x 400 dpi (option)
Compression Method:	MH, MR, MMR, EFC, SSC
Scanning Method:	Flatbed, with CCD
Scanning Width:	297 mm (width of A3)
Scanning Speed:	1.65 sec.
Modem Speed:	
Standard:	14400 / 12000 / 9600 / 7200 / 4800 / 2400 (with Automatic Fallback)
G4-option:	64000 / 56000 (with Automatic Fallback)
Transmission Speed:	
Standard:	6 seconds
G4-option:	3 seconds
Memory Capacity:	
1 MB (standard):	80 pages
+ 2 MB (option):	240 pages
+ 4 MB (option):	400 pages
+ HDD (option):	1200 pages (Function Upgrade Card (option): 3000 pages)
Paper Capacity:	600 sheets (2 x 250-sheet paper tray) + 100-sheets (bypass tray)
Document Feeder Capacity:	30 sheets
Copier/Fax Priority:	user-definable
(Auto) Tray Selection:	user-definable

One hour memory backup
Stamp (optional with Document Feeder)
TTI / RTI / CSI
AI Protocol (Artificial Intelligence)
Quick Dial: 56 numbers (standard)
Speed Dial:
standard: 100 numbers
with optional
Function Upgrade Card: 1000 numbers
Group Dial:
standard: 9 groups, max. 200 numbers per group
with optional
Function Upgrade Card: 30 groups
Dual Access
Restricted Access (20 users, 4 digits)
Label Insertion
Auto Document:
standard: 6 documents
with optional
Function Upgrade Card: 18 documents
Wild cards:
standard: 30 numbers
with optional
Function Upgrade Card: 50 numbers
User Function Keys: 4
Energy Saver
Remaining Memory Indication
Remote Diagnostics System

### Transmission Features

Immediate / Memory / Economy / Parallel Memory Transmission
Serial Broadcasting
(immediate/late): 200 numbers
Forwarding: 5 receivers, 30 senders (with optional Feature Expander Card)
Batch Transmission
Auto Reduction
Auto Image Rotation
Bookfax
Double Sided Transmission
Auto Page Retransmission
Closed Network
Confidential Transmission

Transfer Transmission / Transfer Request

Polling Transmission

ITU-T Error Correction Mode

On hook / Chain Dialling

### Reception Features

Automatic / Manual / Memory Reception
Authorized Reception
standard 30 numbers
with optional
Function Upgrade Card: 50 numbers
Multicopy: 1 to 9 sets (with optional Feature Expander Card)
Reverse Order Printing
Polling: (Multi)-Reception / Later / From memory / Continuous
Reception Time Printing
Centre / Chequered Mark
2 in 1 printing
Duplex reception (with optional Duplex Unit and optional Feature Expander Card, see also copier)
Memory Lock (with optional Feature Expander Card)
Confidential Reception (with optional Feature Expander Card)

### Options

Fax 400 dpi option
Fax Hard Disk Drive Type 250
G4 - ISDN Option Type 250
Feature Expander Type 140 2 MB (2 MB SAF Memory)
Feature Expander Type 140 4 MB (4 MB SAF Memory)
Function Upgrade Card Type 140 Features

Specifications and external appearance  
are subject to change without notice.  
The colour(s) of the actual product may vary from  
the colour(s) shown in this brochure. RICOH believes  
in conserving the earth's precious natural resources.  
This brochure is printed on environmentally friendly paper.

## The Added Value of a Copier-fax

When superior copying features and versatility alone are not enough, the RICOH Aficio 200 copier can easily be expanded with G3 and/or G4 plain paper facsimile module. You save the space of installing a separate fax and you can have all the extra advantages a copier offers: scanning from the platen glass, huge paper capacity and duplex transmission and reception up to A3, not forgetting impeccable digital quality. The Aficio 200 is all you want from a fully featured fax, and a lot more.

### Powerful Productivity

The fax productivity of the Aficio 200 stems from a fast 1.65 second scan speed and two optional 30-page Document Feeders. Its platen glass scanning feature not only lets you transmit originals up to A3, which is quite unique, but it also lets you receive them. Moreover, with the help of an ARDF and duplex unit both A4 and A3 documents can be sent and received double-sided!

Add to this a fast modem speed of 14,400 bps, 6-second transmission, AI protocol and - if you choose - G4-ISDN (64,000 bps, 3 second transmission) and speed is guaranteed. Unnecessary waiting is eliminated thanks to a high print speed of 20 pages per minute,

an optional 30-page Document Feeder and Triple Access that allows simultaneous execution of memory transmissions/receptions, printouts and scanning to memory functions. If this is not enough a Function Upgrade Card increases the capacity of various features (i.e. Speed Dials and Group Dials, Auto Documents, Personal Codes, etc.). In addition, the Aficio 200 fax module can use the same paper capacity (max. 1,600 sheets) as the copier.

### Key-quality

Advanced technology exhibiting 200 dpi resolution (optionally upgradable to 400 dpi) and 64 shades of grey ensures subtle halftones, fine lines and photos that equal the original. The Aficio 200 consistently provides you with crisp and clear faxes.

### Faxing Book-type Originals

Thanks to its unique platen glass scanning feature, the Aficio 200 lets you fax books or non-standard originals such as magazines, stapled documents and even 3D-objects with unprecedented ease, eliminating the time-wasting chore of copying before faxing. When faxing book-type originals, 2 pages can be scanned consecutively and faxed without having to switch the orientation or turn over the pages.

### The Ease of Image Rotation

With Image Rotation there is no longer any need to worry about the orientation of your fax on the platen glass or on the optional Document Feeder.

If necessary, the Aficio 200 automatically rotates the image from its memory to transmit the document correctly.

### Expandable Memory Capacity

The Aficio 200 fax module has a memory that can keep pace with your growing needs. Memory cards of 2 or 4MB, or the optional hard disk offer you extra memory and extra features such as Forwarding, Confidential Reception, Memory Lock, Multicopy and Duplex Reception.

### ISDN-G4

You can boost the speed and accuracy of the Aficio 200 fax module to the G4 data transfer standard of 64,000 bps, drastically reducing transmission costs. Because data is transferred digitally, errors are minimal while the image quality is superior.

### Parallel Memory Transmission

As soon as the Aficio 200 has scanned the first page of your document into memory, it starts transmission whilst continuing to scan the remaining pages. This enables faster confirmation of your connection and ensures faster document delivery. For your convenience the confirmation of connection is visually displayed on the LCD panel and a transmission report is available upon request.

### RDS

RICOH's Remote Diagnostics System (RDS) is available for the fax module and provides you with remote diagnosis of your fax without the need for a RICOH engineer to visit. In the improbable event of a failure it indicates what is wrong or tells you when servicing is needed, reducing downtime and inconvenience.

