

AXIS 213 PTZ Network camera

Pan, tilt and zoom live video directly over your network.



- > 26x optical zoom and 12x digital zoom
- > Superior image quality
- > Operates under all light conditions
- > 20 preset positions
- > Optional two-way audio

AXIS 213 PTZ Network Camera enables advanced remote monitoring with pan, tilt and zoom through operator control from any PC connected to a local area network or the Internet. It is ideal for monitoring people and property – indoors and outdoors – and for remote learning and troubleshooting.

This versatile network camera has a built-in 26x optical zoom, auto focus lens and a 12x digital zoom. It provides wide coverage with its ability to pan 340 degrees, tilt 100 degrees and zoom in on specific details.

AXIS 213 PTZ delivers simultaneous MPEG-4 and Motion JPEG video streams, allowing for optimization in image quality and bandwidth. The MPEG-4 compression mode is ideal for applications where available bandwidth is restricted and higher frame rates are required.

The camera can be manually controlled or scheduled for switching between color image during daytime, and black/white image in low light or nighttime conditions using the built-in IR lighting or an external IR lamp for longer distances.

The camera provides 20 preset positions and 1 preset sequence to monitor specific areas.

Two-way audio and alarm inputs/outputs are available with the optional AXIS 213CM Connection Module.



Technical specifications – AXIS 213 PTZ Network Camera

Camera		Audio	
Models	AXIS 213 PTZ: 50 Hz (PAL) AXIS 213 PTZ: 60 Hz (NTSC) Supports both desktop and ceiling mounting	Audio streaming	Requires optional AXIS 213CM Connection Module Two-way (full or half duplex) or one-way
Image sensor	1/4" Interlaced CCD	Audio compression	G.711 PCM 8 kHz 64kbit/s G.726 ADPCM 8 kHz 32 or 24 kbit/s
Lens	3.5 – 91 mm, F1.6 – F4.0, motorized zoom lens, auto focus, manual day/night Angle of view, horizontal: 1.7° – 47°	Audio input/output	AXIS 213CM Connection module
Minimum illumination	Color mode: 1 lux, F1.6 IR mode: 0.1 lux, F1.6; using built-in IR light in complete darkness up to 3 m (9.8ft)	Network	
Pan/Tilt/Zoom	20 preset positions Pan: ±170°, 1 – 90°/sec Tilt: -10 – 90°, 1 – 70°/sec Zoom: 26x optical, 12x digital Sequence mode, control queue Supports Windows compatible joysticks Designed for operator control* * Not designed for continuous movements	Security	Password protection, IP address filtering
Video		Supported protocols	IP, HTTP, FTP, SMTP, Bonjour, UPnP, DNS, DynDNS, NTP, RTSP, RTP, TCP, UDP, IGMP, RTCP, ICMP, DHCP, ARP, SOCKS
Video compression	MPEG-4 Part 2 (ISO/IEC 14496-2) Motion JPEG	System integration	
Resolutions	160x90 to 704x576	Application Programming Interface	Open API for software integration, including VAPIX® from Axis Communications available at www.axis.com
Frame rate MPEG-4	Up to 21/17 fps at 4CIF/2CIFExp Up to 30/25 fps at 2CIF/CIF/QCIF	Intelligent video	Video motion detection
Frame rate Motion JPEG	Up to 30/25 fps at 4 CIF	Alarm triggers	Intelligent video and external input* *Requires optional AXIS 213CM Connection Module
Video streaming	Multi-stream Motion JPEG and MPEG-4 Controllable frame rate and bandwidth VBR/CBR MPEG-4	Alarm events	File upload via FTP, HTTP and email Notification via email, HTTP and TCP External output activation
Image settings	Compression, backlight compensation, manual IR-cut filter Day/Night, white balance, rotation, color/BW, brightness, noise reduction, exposure control Aspect ratio correction Text and image overlay De-interlace (4CIF Resolution)	Video buffer	6 MB pre- and post alarm
		General	
		Processors and memory	ETRAX 100LX, ARTPEC-2, 32 MB RAM, 4 MB Flash
		Power	11.5 – 14 V DC, max. 13 W
		Connectors	Ethernet 10BASE-T/100BASE-TX, RJ-45 26-pin multi-connector (to Connection Module)
		Operating conditions	5 – 40 °C (41 – 104 °F) Humidity 20 – 80% RH (non-condensing)
		Approvals	EN 55022 Class B, EN55024, EN 61000-3-2, EN61000-3-3, FCC Part 15 Subpart B Class B, VCCI Class B, ICES-003 Class B, C-tick AS/NZS 3548, EN 60950-1 Power supply: EN 60950-1, UL, cUL
		Dimensions (HxWxD)	130 x 104 x 130 mm (5.1" x 4.1" x 5.1")
		Weight	700 g (1.55 lb.) excl. power supply
		Included accessories	Power supply, ceiling and desktop mount kit, Installation Guide, CD with installation tools, recording software and User's Manual, Windows decoder 1-user license

More information is available at www.axis.com

AXIS 213CM Connection Module

Connectors	2 alarm inputs, 3 outputs Composite video: 1 BNC output
Audio	3.5 mm line in, 3.5 mm line out
RS-232	9-pin D-Sub
Connection cable	1 m (3.3 ft)

AXIS 213CM Connection Module



Optional accessories

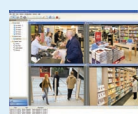
Various housings



AXIS 295 Video Surveillance Joystick



T90A IR illuminators



For information on AXIS Camera Station and video management software from Axis' Application Development Partners, see www.axis.com/products/video/software/