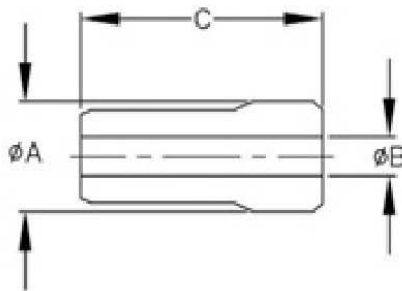


## COLLETS

### DA Collets

- ⇒ Collets can be ordered separately or in sets see page 47.
- ⇒ To order separately, specify Collet Series and I.D. size. Example: DA18-0062 represents a DA18 series with a .0625 I.D.
- ⇒ To order sets see order number above.
- ⇒ Collets 100% Compatible with Kennametal Erickson collets.



COLLET SERIES	A GAGELINE	B MAX	C
DA30	.375	.250	1.000
DA20	.531	.375	1.188
DA10	.769	.563	1.438
DA18	1.035	.750	1.625

I.D.			DA-18 SERIES	DA-10 SERIES	DA-20 SERIES	DA-30 SERIES
FRACTIONS		DEC.				
	1/16	3/64 .0468	DA18-0062	DA10-0062	DA20-0062	DA30-0047
		.0625				DA30-0062
		5/64 .0781	DA18-0078	DA10-0078	DA20-0078	DA30-0078
	3/32	.0937	DA18-0094	DA10-0094	DA20-0094	DA30-0094
		7/64 .1094	DA18-0109	DA10-0109	DA20-0109	DA30-0109
1/8		.1250	DA18-0125	DA10-0125	DA20-0125	DA30-0125
		9/64 .1406	DA18-0141	DA10-0141	DA20-0141	DA30-0141
		5/32 .1562	DA18-0156	DA10-0156	DA20-0156	DA30-0156
		11/64 .1719	DA18-0172	DA10-0172	DA20-0172	DA30-0172
	3/16	.1875	DA18-0187	DA10-0187	DA20-0187	DA30-0187
		13/64 .2031	DA18-0203	DA10-0203	DA20-0203	DA30-0203
		7/32 .2188	DA18-0219	DA10-0219	DA20-0219	DA30-0219
		15/64 .2344	DA18-0234	DA10-0234	DA20-0234	DA30-0234
1/4		.2500	DA18-0250	DA10-0250	DA20-0250	DA30-0250
		17/64 .2656	DA18-0266	DA10-0266	DA20-0266	
		9/32 .2812	DA18-0281	DA10-0281	DA20-0281	
		19/64 .2969	DA18-0297	DA10-0297	DA20-0297	
	5/16	.3125	DA18-0312	DA10-0312	DA20-0312	
		21/64 .3281	DA18-0328	DA10-0328	DA20-0328	
		11/32 .3438	DA18-0344	DA10-0344	DA20-0344	
		23/64 .3594	DA18-0359	DA10-0359	DA20-0359	
3/8		.3750	DA18-0375	DA10-0375	DA20-0375	
		25/64 .3906	DA18-0391	DA10-0391		
		13/32 .4062	DA18-0406	DA10-0406		
		27/64 .4219	DA18-0422	DA10-0422		
	7/16	.4375	DA18-0437	DA10-0437		
		29/64 .4531	DA18-0453	DA10-0453		
		15/32 .4688	DA18-0469	DA10-0469		
		31/64 .4844	DA18-0484	DA10-0484		
1/2		.5000	DA18-0500	DA10-0500		
		33/64 .5156	DA18-0516	DA10-0516		
		17/32 .4312	DA18-0531	DA10-0531		
		35/64 .5469	DA18-0547	DA10-0547		
	9/16	.5625	DA18-0562	DA10-0562		
		37/64 .5781	DA18-0578			
		19/32 .5938	DA18-0594			
		39/64 .6094	DA18-0609			
5/8		.6250	DA18-0625			
		41/64 .6406	DA18-0641			
		21/32 .6562	DA18-0656			
		43/64 .6719	DA18-0672			
	11/16	.6875	DA18-0688			
		45/64 .7031	DA18-0703			
		23/32 .7188	DA18-0719			
		47/64 .7344	DA18-0734			
3/4		.7500	DA18-0750			