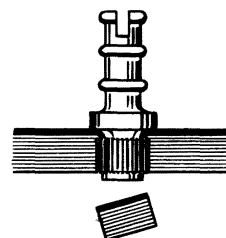
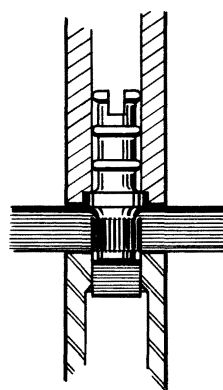


The revolutionary Prestincert technique was developed for mounting threaded bushes, terminals, etc., on sheet material without having to make preparatory holes or do any subsequent locking. The component makes its own hole and is inserted and securely fixed all in one simple operation, and the saving in time alone quickly pays for the simple tools involved.



## GOOD ELECTRICAL CONTACT:

A highly significant feature of the "Prestincert" technique in the electrical and electronic industries is the facility for attaching terminals to printed circuit boards both mechanically and electrically in one operation, without soldering. As the "Prestincert" component is pressed into the printed circuit board, an annular fillet on the underside of the head comes into contact with the copper cladding. This fillet causes the copper to flow over the edge of the aperture, at the same time cleaning it, and thus ensuring a good electrical contact.

## PERFORMANCE UNDER EXTREMES OF ENVIRONMENT:

The electrical performance of these "Prestincert" components is of a very high order. The contact resistance to base has not been found to exceed 2 milli-ohms after the vigorous salt spray, electrical temperature and tropical tests laid down by R.C.S.C.

## SUITABLE MATERIALS:

Prestincert Brass Bushes and Terminations are designed for use with good quality cold punching laminates (SRBP & SRBF) and low shear strength Aluminium and Aluminium Alloys.

\*With some of the thicker materials shown, it is often necessary to open out the die by 10–15% of the material thickness. Our Technical Advisory Service will be pleased to assist where necessary.

## GLASS FIBRE MATERIALS:

Some grades of glass laminate have been found suitable — generally they necessitate using a standard die which has been "opened out" by 10–15% of the sheet material thickness.

However, resulting from the wide range of glass laminate materials which are now readily available, it is possible that certain extremely hard or brittle laminates may not prove suitable. If in doubt — consult our Technical Advisory Service.

## MULTI-INSERTION TOOLING:

Insertions can be carried out either as a series of single point operations, or on a simultaneous multi-insertion basis, according to the dictates of the job.

We shall be pleased to discuss multi-insertion tooling upon request.

## SPECIAL PRESTINCERT COMPONENTS:

In addition to the standard items listed, a wide variety of Prestincert components are made to order.

We shall be pleased to consider the manufacture of special Prestincert Components.



**PRESTIN CERT**  
LIMITED  
540 GREAT CAMBRIDGE ROAD  
ENFIELD · MIDDLESEX · ENGLAND



# PREST IN CERT TURRET LUGS & SCREW BINDING POSTS

PUNCHED DIRECTLY INTO SHEET MATERIALS — NO FIXING HOLES REQUIRED

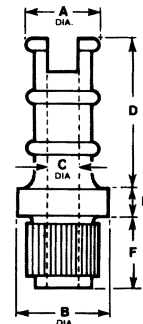
Suitable for most cold punching laminates (SRBP & SRBF), low shear strength Aluminium & Aluminium Alloys. Some of these components can be inserted using tools that suit the L1600 kits, but where marked Ø the insertion tools must be used with C7308 adaptor in conventional presses.

## TURRET LUGS

Material: Brass, B.S.249

Finish: Tin

\* See Note regarding Suitable materials — page 13.



Part No.	Material Thickness	Minimum Insertion Force	A	B	C	D	E	F	Insertion Tool
Y 3511	1/16" (1,59mm)	½ ton	0.102" (2,6mm)	0.156" (3,98mm)	0.045" (1,15mm)	0.213" (5,41mm)	0.062" (1,59mm)	0.062" (1,59mm)	Y 11433/ Orange
L 1539	1/16" (1,59mm)	½ ton	0.102" (2,6mm)	0.156" (3,98mm)	0.045" (1,15mm)	0.213" (5,41mm)	0.062" (1,59mm)	0.100" (2,54mm)	Y 11433/ Orange
	3/32" * (2,38mm)	½ ton							Y 11433/ Orange
L 1538	3/32" (2,38mm)	1 ton	0.102" (2,6mm)	0.172" (4,38mm)	0.045" (1,15mm)	0.213" (5,41mm)	0.062" (1,59mm)	0.130" (3,30mm)	Ø T 28800/ Orange/Green
	1/8" * (3,18mm)	1 ton							Ø T 28800/ Orange/Green
L 1537 <sup>X/S</sup>	1/8" (3,18mm)	1 ton	0.125" (3,18mm)	0.187" (4,75mm)	0.052" (1,33mm)	0.282" (7,16mm)	0.078" (1,98mm)	0.155" (3,94mm)	Ø T 27471/ Yellow/Green
Y 12186	1/16" (1,59mm)	½ ton	0.125" (3,18mm)	0.187" (4,75mm)	0.067" (1,70mm)	0.282" (7,17mm)	0.078" (1,98mm)	0.100" (2,54mm)	T 27471/ Yellow/Green
	3/32" * (2,38mm)	1 ton							Ø T 27471/ Yellow/Green
Y 13813	1/16" (1,59mm)	½ ton	0.200" (5,1mm)	0.250" (6,35mm)	0.110" (2,8mm)	0.312" (7,93mm)	0.073" (1,85mm)	0.130" (3,30mm)	T 28629/ Orange/Black
	3/32" * (2,38mm)	1 ton	NOTE: Standard component Y 13813 is NOT designed for use with copper clad material						Ø T 28629/ Orange/Black

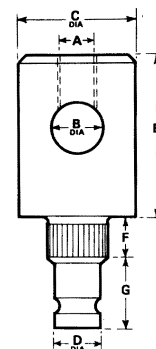
## SCREW BINDING POSTS for 1/16" (1,59mm) materials

Material: Brass, B.S.249

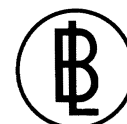
Finish: Silver

Suitable for insertion with tools that suit the L1600 kits — minimum insertion force ½ ton

Part No.	A	B	C	D	E	F	G	Tool to suit L1600 Kits
Y 10950 <sup>X/S</sup>	6B A	0.120" (3,05mm)	0.218" (5,55mm)	0.093" (2,38mm)	0.351" (8,92mm)	0.100" (2,54mm)	0.125" (3,18mm)	T 25992/ Blue/Blue
Y 20058	M2,5	0.120" (3,05mm)	0.218" (5,55mm)	0.093" (2,38mm)	0.351" (8,92mm)	0.100" (2,54mm)	0.125" (3,18mm)	T 25992/ Blue/Blue
B 1211	6BA	0.090" (2,25mm)	0.187" (4,75mm)	0.083" (2,10mm)	0.187" (4,75mm)	0.080" (2,05mm)	0.158" (4,00mm)	T 26819/ Green/Green
B 1212	M2,5	0.090" (2,25mm)	0.187" (4,75mm)	0.083" (2,10mm)	0.187" (4,75mm)	0.080" (2,05mm)	0.158" (4,00mm)	T 26819/ Green/Green




**PREST IN CERT LIMITED**  
540 GREAT CAMBRIDGE ROAD  
ENFIELD · MIDDLESEX · ENGLAND



**PUNCHED DIRECTLY INTO SHEET MATERIALS—NO FIXING HOLES REQUIRED**

All components shown on this page can be inserted using tools that fit the L1600 kits or C7308 adaptor. Material: Brass B.S.249 Finish: Tin. \* See Note regarding suitable materials – page 13



**PRESTIN CERT**  
LIMITED  
540 GREAT CAMBRIDGE ROAD  
ENFIELD · MIDDLESEX · ENGLAND

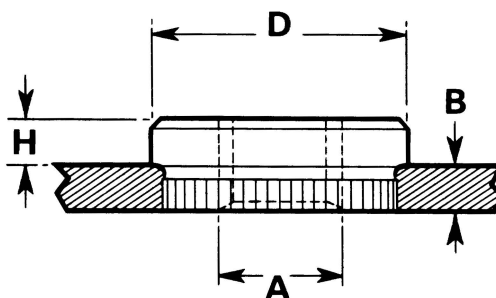


# PREST IN CERT BRASS BUSHES

PUNCHED DIRECTLY INTO SHEET MATERIALS — NO FIXING HOLES REQUIRED

Suitable for most cold punching laminates (SRBP & SRBF), low shear strength Aluminium & Aluminium Alloys. Metric & Unified Bushes have coding ring on external diameter.

All components shown on this page can be inserted using tools that fit the L1600 kits or C7308 adaptor. Material: Brass B.S. 249 Finish: Tin Standard class of Threads where applicable: 2 B



BA THREADS	PART No.	Thread Size A	Sheet Thickness B	Height H	Diameter D	Kit Insertion Tool
	L1540	6BA	$\frac{1}{16}$ " (1,59mm)	0.062" (1,59mm)	0.250" (6,35mm)	Y11433/ Red
	L1541 (Joint Service No. 5340-99-110-3789)	4BA	$\frac{1}{16}$ " (1,59mm)	0.062" (1,59mm)	0.312" (7,94mm)	Y11433/ Green
	L1542	2BA	$\frac{1}{16}$ " (1,59mm)	0.062" (1,59mm)	0.375" (9,53mm)	Y11433/ Yellow
BA THREADS	PART No.	Thread Size A	Sheet Thickness B	Height H	Diameter D	Kit Insertion Tool
	L1535	6BA	$\frac{3}{32}$ " (2,38mm)	0.062" (1,59mm)	0.250" (6,35mm)	Y11433/ Red
	Y.3718	4BA	$\frac{3}{32}$ " (2,38mm)	0.062" (1,59mm)	0.312" (7,94mm)	Y11433/ Green
METRIC ISO & DIN THREADS	PART No.	Thread Size A	Sheet Thickness B	Height H	Diameter D	Kit Insertion Tool
	Y.11435	M2,5	$\frac{1}{16}$ " (1,59mm)	0.062" (1,59mm)	0.236" (6,0mm)	Y11438/ Red/Black
	Y.12036	M2,6	$\frac{1}{16}$ " (1,59mm)	0.062" (1,59mm)	0.236" (6,0mm)	Y11438/ Red Black
	Y.11436	M3	$\frac{1}{16}$ " (1,59mm)	0.062" (1,59mm)	0.256" (6,5mm)	Y11438/ Green/Black
	Y.11437	M4	$\frac{1}{16}$ " (1,59mm)	0.062" (1,59mm)	0.335" (8,5mm)	Y11438/ Yellow/Black
UNIFIED THREADS	PART No.	Thread Size A	Sheet Thickness B	Height H	Diameter D	Kit Insertion Tool
	Y.3514	4-40 UNC	$\frac{1}{16}$ " (1,59mm)	0.062" (1,59mm)	0.250" (6,35mm)	Y11433/ Red
	Y.20045	6-32 UNC	$\frac{1}{16}$ " (1,59mm)	0.062" (1,59mm)	0.312" (7,94mm)	Y11433/ Green/Blue
	Y.12446	10-32 UNF	$\frac{1}{16}$ " (1,59mm)	0.062" (1,59mm)	0.375" (9,53mm)	Y11433/ Yellow/Blue



**PREST IN CERT LIMITED**  
540 GREAT CAMBRIDGE ROAD  
ENFIELD · MIDDLESEX · ENGLAND

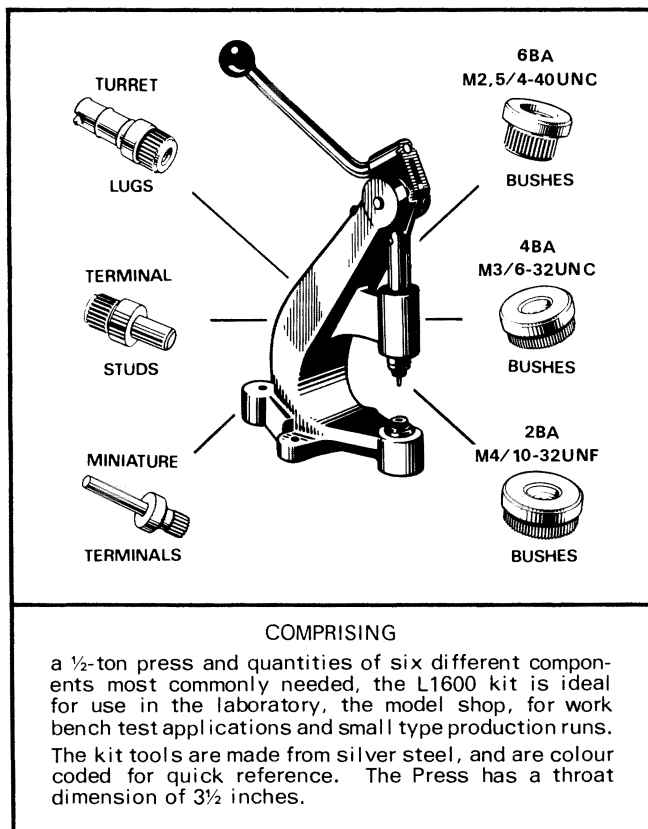


# PRESTIN CERT L1600 KITS

COMPONENTS PUNCHED DIRECTLY INTO SHEET MATERIALS — NO FIXING HOLES REQUIRED

Suitable for most cold punching laminates (SRBP & SRBF), low shear strength Aluminium & Aluminium Alloys. Alternatively the tools indicated can be used with C7308 adaptor in conventional presses.

**MAXIMUM PRESS CAPACITY ½ TON**



KIT No.	BUSH THREADS
L1600	BRITISH
L1600/M	METRIC ISO
L1600/D	METRIC DIN
L1600/U	UNIFIED

Terminals and Tools supplied in all L1600 kits.		
No.	Item	Kit Tool and Colour Code
L1673	Terminal	Y11433/Black
L1598	Mini-Terminal	Y11433/White
L1539	Turret Lug	Y11433/Orange

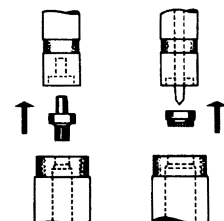
Threaded Bushes & Tools supplied in L1600			Threaded Bushes & Tools supplied in L1600/M			Threaded Bushes & Tools supplied in L1600/D			Threaded Bushes & Tools supplied in L1600/U		
No.	Thread	Kit Tool & Colour Code	No.	Thread	Kit Tool & Colour Code	No.	Thread	Kit Tool & Colour Code	No.	Thread	Kit Tool & Colour Code
L1540	6BA	Y11433/Red	Y11435	M2,5	Y11438/Red/Black	Y12036	M2,6	Y11438/Red/Black	Y3514	4-40 UNC	Y11433/Red
L1541	4BA	Y11433/Green	Y11436	M3	Y11438/Green/Black	Y11436	M3	Y11438/Green/Black	Y20045	6-32 UNC	Y11433/Green/Blue
L1542	2BA	Y11433/Yellow	Y11437	M4	Y11438/Yellow/Black	Y11437	M4	Y11438/Yellow/Black	Y12446	10-32 UNF	Y11433/Yellow/Blue

## FEATURES

“Snap-in” interchangeable tools, released by quarter turn.

Tools and Component Containers Colour Coded.

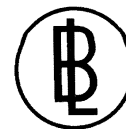
Adjustable stop — to suit material thickness.



Component loading —  
(KNURL DOWNWARDS)



**PRESTIN CERT LIMITED**  
540 GREAT CAMBRIDGE ROAD  
ENFIELD · MIDDLESEX · ENGLAND



# PREST IN CERT COMPONENT — TOOLING REFERENCE

COMPONENTS PUNCHED DIRECTLY INTO SHEET MATERIALS — NO FIXING HOLES REQUIRED

L1600 Kits are designed to accept a maximum ½ ton loading — for loads in excess of this use C7308 adaptor in conventional press.

## COMPONENT REFERENCE

Component Number	Tool Number	Component Number	Tool Number
B1211	T26819/GREEN/GREEN	Y3317 *	T26666/YELLOW/YELLOW
B1212	T26819/GREEN/GREEN	Y3511	Y11433/ORANGE
B1214*	T26666/YELLOW/YELLOW	Y3514	Y11433/RED
B1229	T28103/WHITE/WHITE	Y3718	Y11433/GREEN
L1533*	Y11433/BLACK	Y3976*	T26858/BLACK/BLACK
L1534*	Y11433/BLACK	Y10950	T25992/BLUE/BLUE
L1535	Y11433/RED	Y11435	Y11438/RED/BLACK
L1537	T27471/YELLOW/GREEN	Y11436	Y11438/GREEN/BLACK
L1538*	T28800/ORANGE/GREEN	Y11437	Y11438/YELLOW/BLACK
L1539*	Y11433/ORANGE	Y11689	T28103/WHITE/WHITE
L1540	Y11433/RED	Y11985	Y11433/WHITE
L1541	Y11433/GREEN	Y12036	Y11438/RED/BLACK
L1542	Y11433/YELLOW	Y12186*	T27471/YELLOW/GREEN
L1598	Y11433/WHITE	Y12446	Y11433/YELLOW/BLUE
L1669	T24735/BLUE	Y13813*	T28629/ORANGE/BLACK
L1670	T26494	Y20045	Y11433/GREEN/BLUE
L1671	T24918/GREY or C7354	Y20058	T25992/BLUE/BLUE
L1673*	Y11433/BLACK		
L1674	Y11433/BLACK		

\* See Note regarding suitable materials — page 13

## TOOL REFERENCE

Colour Code	Tool Number	Suitable for
BLACK BLACK/BLACK BLUE BLUE/BLUE	Y11433/BLACK T26858/BLACK/BLACK T24735/BLUE T25992/BLUE/BLUE	L1533, L1534, L1673, L1674 Y3976 L1669 Y10950, Y20058
GREEN GREEN/BLACK GREEN/BLUE GREEN/GREEN GREY	Y11433/GREEN Y11438/GREEN/BLACK Y11433/GREEN/BLUE T26819/GREEN/GREEN T24918/GREY	L1541, Y3718 Y11436 Y20045 B1211, B1212 L1671 into L1672
ORANGE ORANGE/BLACK ORANGE/GREEN	Y11433/ORANGE T28629/ORANGE/BLACK T28800/ORANGE/GREEN	L1539, Y3511 Y13813 L1538
RED RED/BLACK	Y11433/RED Y11438/RED/BLACK	L1535, L1540, Y3514 Y11435, Y12036
WHITE WHITE/WHITE	Y11433/WHITE T28103/WHITE/WHITE	L1598, Y11985 B1229, Y11689
YELLOW YELLOW/BLACK YELLOW/BLUE YELLOW/GREEN YELLOW/YELLOW	Y11433/YELLOW Y11438/YELLOW/BLACK Y11433/YELLOW/BLUE T27471/YELLOW/GREEN T26666/YELLOW/YELLOW	L1542 Y11437 Y12446 L1537, Y12186 B1214, Y3317
—	T26494	L1670
—	C7354	L1671 into Y13750



**PREST IN CERT**  
LIMITED  
540 GREAT CAMBRIDGE ROAD  
ENFIELD · MIDDLESEX · ENGLAND

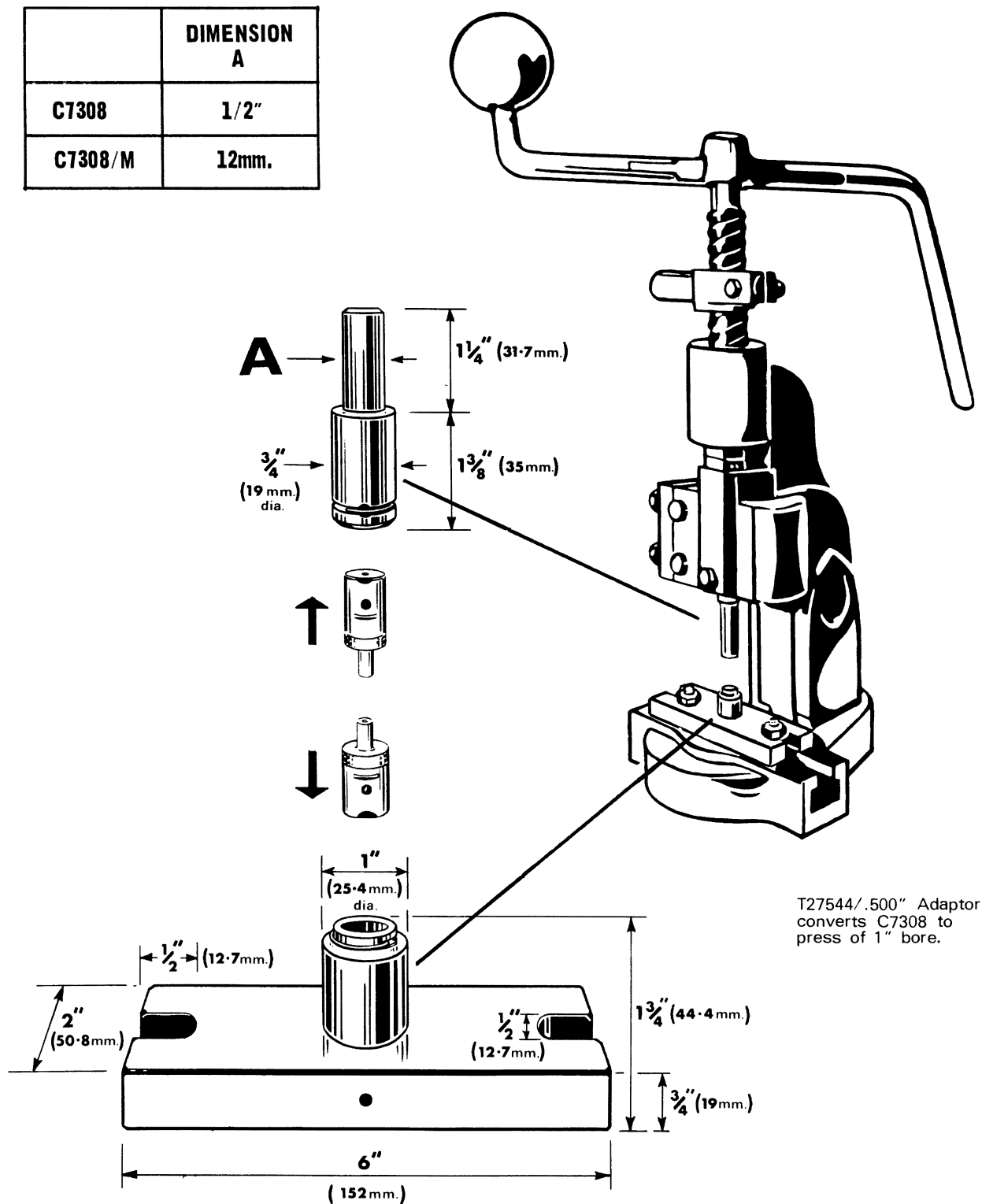


# PRESTIN CERT ADAPTOR FOR KIT TOOLS

COMPONENTS PUNCHED DIRECTLY INTO SHEET MATERIALS — NO FIXING HOLES REQUIRED

**C7308** adaptor converts all Kit Tools and Supplementary Tools to conventional presses.

	DIMENSION A
<b>C7308</b>	1/2"
<b>C7308/M</b>	12mm.



**PRESTIN CERT**  
LIMITED  
540 GREAT CAMBRIDGE ROAD  
ENFIELD · MIDDLESEX · ENGLAND





## STEEL EARTH PIN

TYPE: Y3684

Suitable for:  
20, 18 & 16SWG (1mm–1.59mm) steel,  
18, 16SWG (1.25mm–1.59mm) aluminium

Material: STEEL EN.1.A., B.S.970

Finish: Tin

Insertion Tool: T26733



## STEEL EARTH PIN

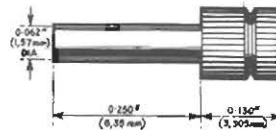
TYPE: Y12917

Suitable for:  
14, 12 & 10SWG (2mm–3.25mm) aluminium

Material: STEEL EN.1.A., B.S.970

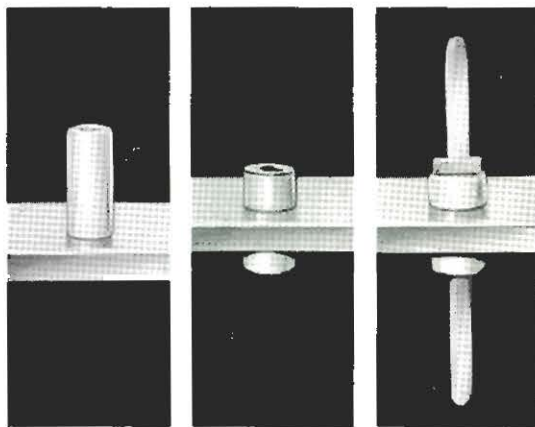
Finish: Tin

Insertion Tool: T26733



## PTFE INSULATING BUSHES

suitable for insertion into most grades of aluminium

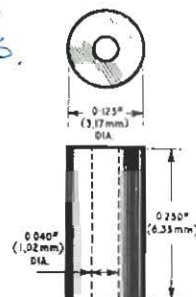


TYPE: L1672

Material Thickness:  
1/16" (1.59mm)

Insertion Tool:  
T24686

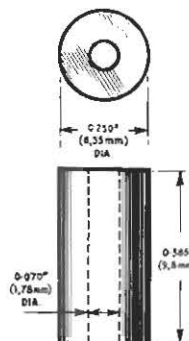
1/16"



TYPE: Y13750

Material Thickness:  
3/16" (5mm)

Insertion Tool:  
C7329



When taking electrical leads through a chassis, these Prestincert insulating bushes effect considerable economies in time and labour over conventional methods since they form their own holes and are securely mounted in a single operation. The bushes accept wires of up to 0.032" (0.8mm) diameter or, alternatively, terminal post L1671 for wrapped wire or soldered connections is available.

Made of P.T.F.E. these bushes have excellent electrical properties. Their insulation resistance exceeds  $2 \times 10^6$  megohms, and the breakdown voltage is greater than 2 kV. They will withstand the full rigours of environmental conditions anywhere, and are unlikely to be damaged in normal soldering processes.

Conventional presses can be used for insertion, either hand operated or fully automatic.

1/16"

## LEAD THROUGH TERMINAL POST No. L1671

This component is designed for insertion into P.T.F.E. Bushes L1672 & Y13750 to give an insulated, non-rotating, lead-through terminal.

Material: HARD BRASS, B.S.265  
Finish: Tin

Insertion Tool for inserting  
L1671 into L1672:  
T24918/GREY

Insertion Tool for inserting  
L1671 into Y13750:  
C7354

The insertion tool fits directly into the small hand press supplied in the L1600 Prestincert Tool Kit, and by means of adaptor C7308 will also fit most standard bench presses.

