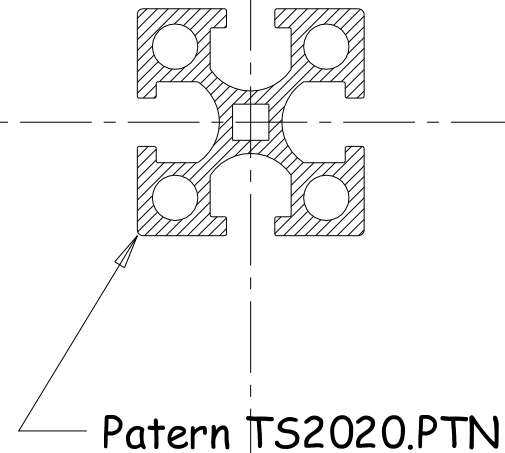
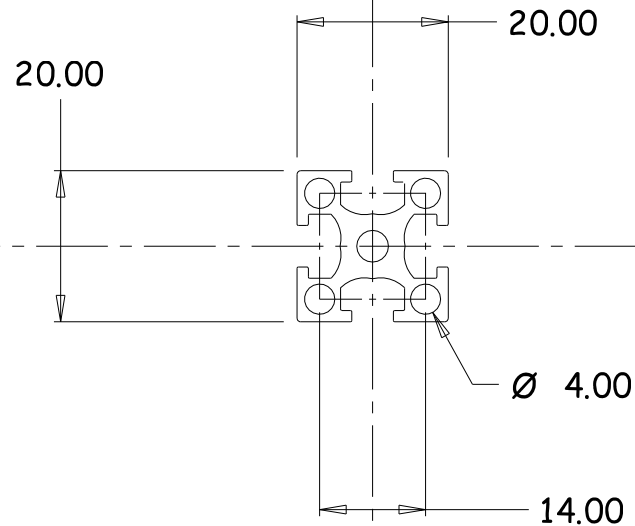


CASA Type Numbers:

TSLOT20x428-AL30AN = 428mm length of T-slot 20x20 anodised satin clear.

TSLOT20x488-AL30AN = 488mm length of T-Slot 20x20 anodised

PROVISIONAL - Only



MATERIAL
Extrusion
No. TS2020

ALLOY
6063-T5

EST. AREA
265 mm

EST. WEIGHT
2.80 kg/m

EST. PERIPHERY
EXT: 354 mm
TOT: 354 mm

TOLERANCE
0.00mm ±0.1mm
00.0mm ±0.25mm
0000mm ±0.5mm
0-600mm ±0.1mm
> 600mm ±0.5mm

BS1474:1987
APPLIES UNLESS
OTHERWISE
SPECIFIED

JOB No.
3000



Modular Systems

66 Fitzherbert St, WELLINGTON, NZ

TELEPHONE : (64-4) 9393 777

FACSIMILE : upon request

CUSTOMER : CASA Modular Systems

DESCRIPTION : T-Slot Extrusion Size 20 (20mm x 20mm)

DRAWN :
A.W.DDATE :
29/10/16APPROVED :
?DWG. SCALE :
1:1COPYRIGHT : CASA Modular Systems
ALL RIGHTS RESERVEDSIZE
A4DRAWING Reference No.
TS20x20-ALISSUE
A