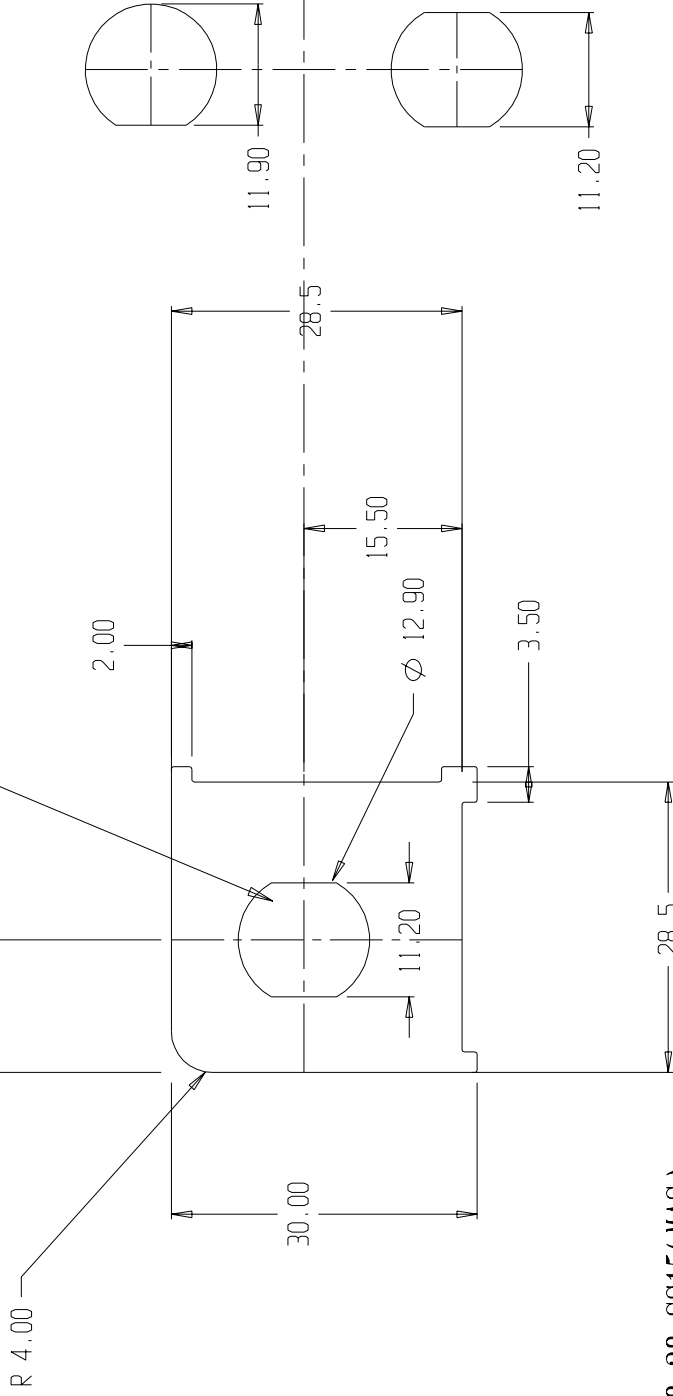


**Production Procedure:-**

- 1) Laser Cut nested parts from 1.6mm 304 Sheet
- 2) Deburr Plates ready TIG/MIG welding
- 3) Punch "D" hole id not laser cut
- 4) Weld into folded angle stake according to drawing MAS-PEG-SS15.PRT.

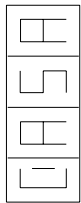
"D" Hole to suit specific style/Brand of connector to be used in current production

24BNC-50-3-1 = ML4 = 12.9x11.9AF  
 R141-332-161 = ML52 = 12.8x11.2AF



Blank Part Number = PLT-28x28-SS15(MAS)

JOB No.  
**3150**

 Modular Systems P.O. BOX 38-828, WELLINGTON, NEW ZEALAND TELEPHONE : (64-4) 9393 777 FACSIMILE : (64-4) 9393 778	CUSTOMER : CASA Modular Systems		SIZE <b>A4</b>	DRAWING Reference No. <b>PLT-2649-SS16A</b>	ISSUE
	DESCRIPTION : Plate 24BNC for Stake		DWG. SCALE : 1:1	APPROVED : ?	DATE : 05/03/03
		DRAWN : A.W.D	APPROVED : ?	DATE : 05/03/03	DWG. SCALE : 1:1
© COPYRIGHT : CASA Modular Systems ALL RIGHTS RESERVED					