

CASA Type Numbers (typical)

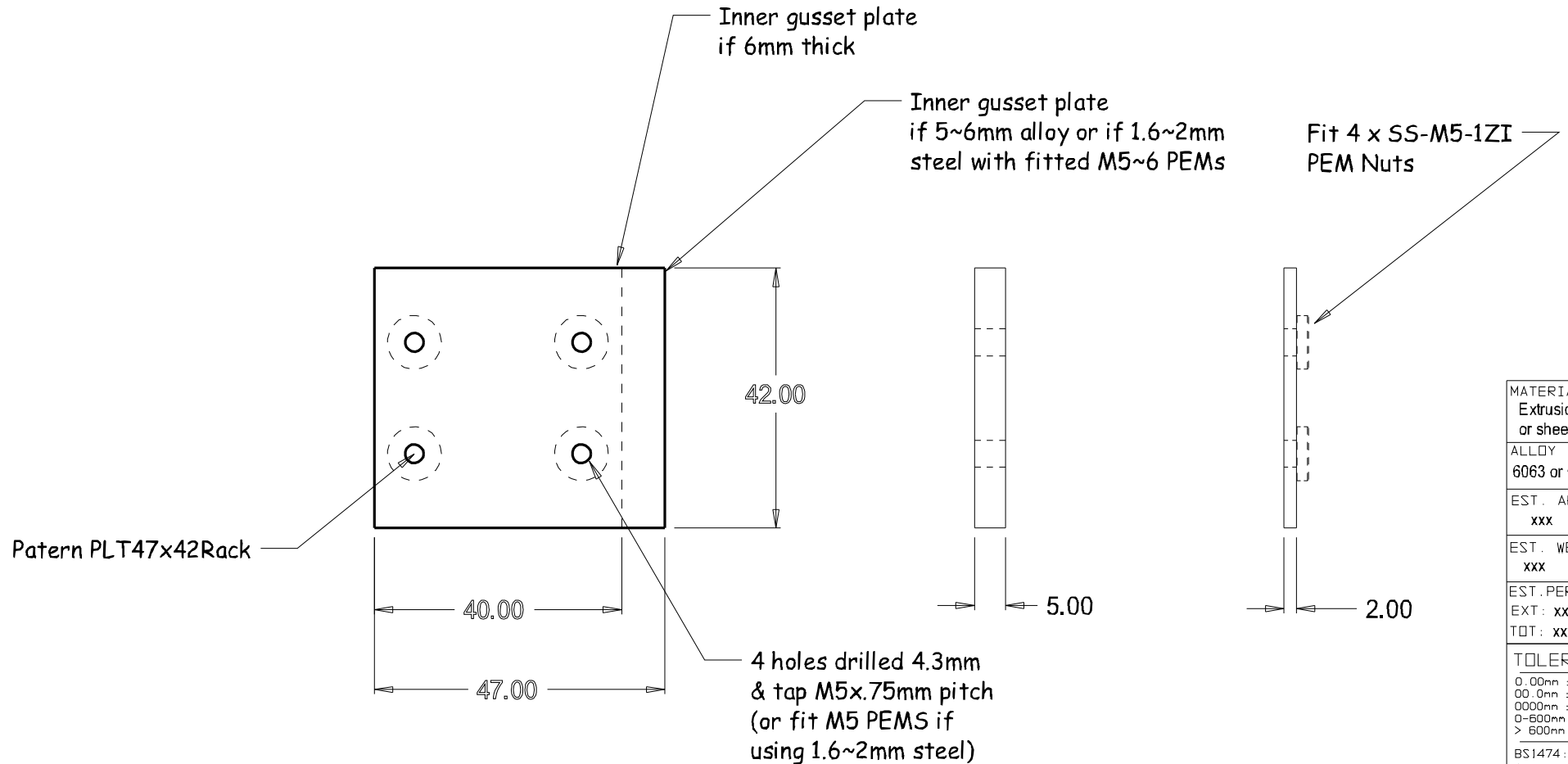
PLT-42x40-RACK-AL5NA (5mm alloy natural)

PLT-42x40-RACK-AL6NA (6mm alloy natural)

PLT-47x42-RACK-AL5AN (5mm anodised)

PLT-47x42-M5-RACK-MS20ZC (2mm steel Zinc-Plated with 4 x M5 PEMs)

PLT-42x40-M5-Rack-AL6 (tappen M5~6 in 6mm alloy, natural)



MATERIAL
Extrusion or sheet/plate
ALLOY
6063 or CR etc.
EST. AREA
xxx mm
EST. WEIGHT
xxx kg/m
EST. PERIPHERY
EXT: xxx mm
TOT: xxx mm
TOLERANCE
0.00mm ±0.1mm
00.0mm ±0.25mm
0000mm ±0.5mm
0-600mm ±0.1mm
> 600mm ±0.5mm
BS1474:1987
APPLIES UNLESS OTHERWISE SPECIFIED
JOB No.
3000

CASA Modular Systems 66 Fitzherbert St, Petone, NEW ZEALAND TELEPHONE : (64-4) 9393 777 FACSIMILE : (64-4) on request only	CUSTOMER : CASA Modular Systems				SIZE	DRAWING Reference No.	ISSUE
	DESCRIPTION : Clamp-Gusset Side-Plate for LW Rack Angle				A4	PLT-47x42-Rack	A
	DRAWN : AWD	DATE : 06/11/16	APPROVED : ?	DWG. SCALE : 1:1	© COPYRIGHT : CASA Modular Systems ALL RIGHTS RESERVED		