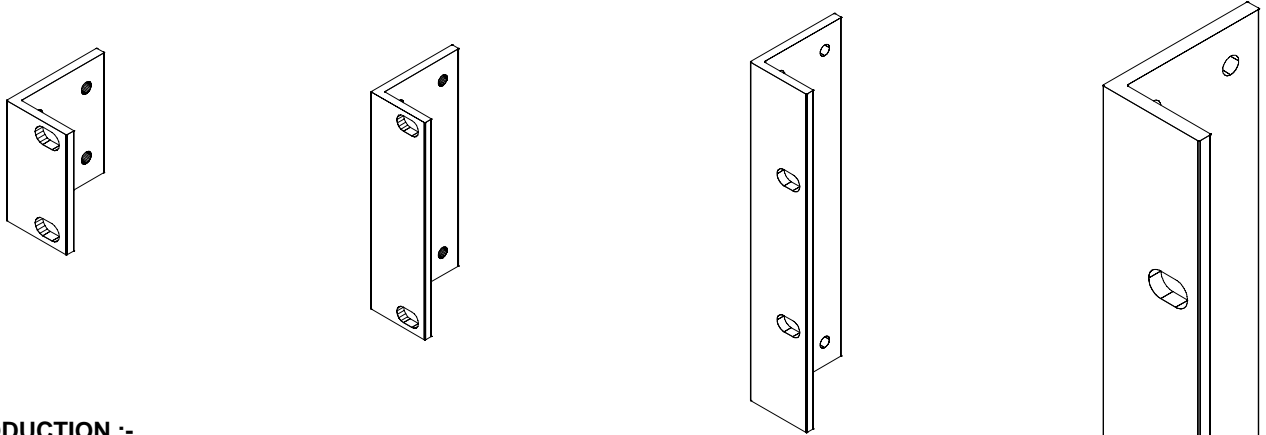


Alloy Brackets for Rack fixing



INTRODUCTION :-

CASA's RACK Fixing Brackets are designed to facilitate the RETRO-FIXING of suitably sized equipments into 19" Equipment Racking frames and cabinets as used by the Professional and Industrial Electronics Industry. These are available in depths from 38mm and can be supplied with our standard 4.2mm dia fixing hole or blank and may also be customized by CASA with conventional tools and machinery to meet to your exact requirements.

These items supllment the range of CASA Steel Rack Brackets 1U~4U and our Rack Shelves. Packers can be made to suit equipments that are narrower than the nominal 17".between the cheeks of the brackets OR we can custom process blank parts to make exact sizes to suit your equipments. These brackets, in their Rack Module or Instrument Rack Module form, are as used with CASA's Rack Module

FEATURES:-

- 1) Standard UNIT heights from **1-6 units** (1U = 44.45mm = 1.75" - larger brackets can be made to order).
- 3) **Simple** design permits standard & SPECIAL, finishes and variants to be produced economically even in small quantities with features including custom punching to suit special needs.
- 4) All corners and edges of the brackets are **de-burred** to remove sharp edges burrs and sharp corners.
- 5) Anodizing in Clear/Natural and other colours to order - Paint or Powder Coat finishes to match existing colour schemes.

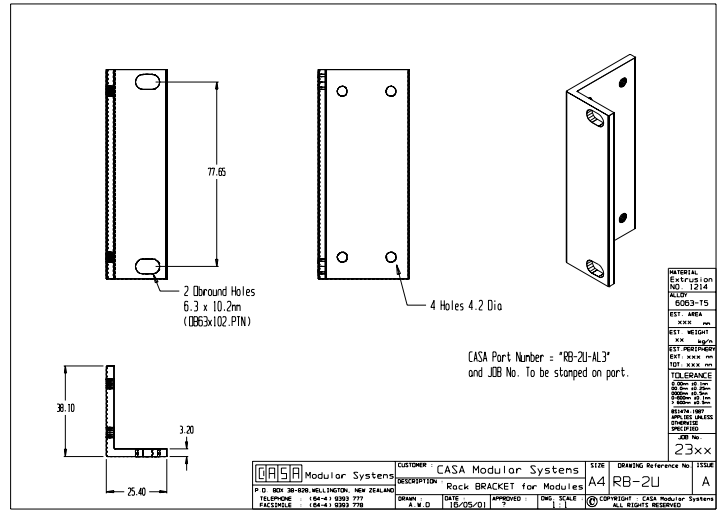
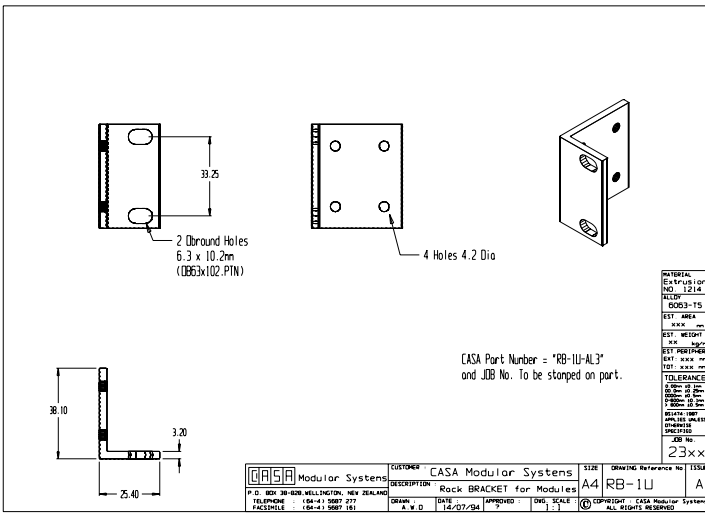
Specification Details:- (see reverse of this data sheet for dimensional information)

<p>➔ Standard Heights:-</p>	1 Unit (43.7mm)
	2 Units (88.1mm)
	3 Units (132.5mm)
	4 Units (177.0mm)
	5 Units (221.5mm)
	6 Units (265.9mm)
<p>Other sizes available to Order - 8U, 10U, 12U, etc.</p>	
<p>➔ Standard Thickness:-</p>	3.0 mm (others to order)
	Depths:- (measured from the front face of the bracket)
	38mm (50+75+100mm to order) (other special depths to order)
<p>Size Tolerances (typically)</p>	better than +/- 0.2mm depending upon finish
<p>➔ Finish:-</p>	Natural, Anodize, Powder Coat
<p>➔ Materials:- (other materials available to order)</p>	Aluminum 6063-T5

Intillegent Part Number:- RB-xxU-yyy-ALg-F(special adder/suffix)

Please compose a Part Number according to this system and use on your official order.

- RB-** Prefix to indicate "RACK BRACKET". or use "IRB" for CASA's Instrument Modules etc.
- xxU-** HEIGHT in RACK Units (multiples of 44.45 millimeters e.g. 2U = 2 Rack Units = 88.1mm) high).
- yyy** Depth behind the rack fixing face in millimeters (only specify if NOT the standard 38mm depth)
- ALg-** Alloy GAUGE of stock material in "mm " (e.g. AL3 = 3.0mm Aluminum)
- F-** FINISH applied (eg. NA=Natural, AN= Anodised Natural, GEP = Grey Epoxy Powder Coat)
- (-----)** Special adder or suffix gives Custom information or Drawing No., Job No. etc.



Note - Maximum equipment width is 17" = 431.8mm
when using 3mm thick brackets.

OTHER DRAWINGS TO FOLLOW - Please request
separate drawings as required

