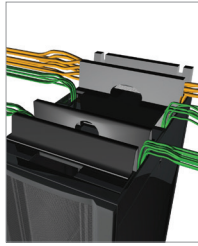


# NetShelter SX Enclosure Features

## More standard features for faster installation

### 1 Cable access roof

- Eight cable entry slots
- Toolless mounting of overhead cable trough system
- Snap-in mounting to allow easy roof removal and installation with cables in place



### 2 Integrated baying brackets

- Preinstalled on frame, front and back
- Spacing options at 24 in. (600 mm)
- Bays with other Schneider Electric power and cooling products

### 3 Preinstalled leveling feet and casters

- Easily adjustable leveling from top-down
- Casters standard on all enclosures

### 4 Toolless, zero-U accessory channel

- Toollessly mount rack PDUs
- Toollessly mount vertical cable organizers



### 5 Easily adjustable vertical mounting rails

- Simple screw and cam engagement
- Captive screws — no loose hardware
- Easy visual alignment for quick adjustment
- Adjust in 0.25 in. (6 mm) increments through enclosure
- Hole cutouts for 0U installation (AR8469) of Data Distribution Cable (DDC) accessories

### 6 Half-height side panels

- Easy and safe handling
- Quick release latch
- Lockable — same key as doors
- Enclosure width remains the same with or without sides attached



### Other standard features include:

- Integrated electrical bonding of sides, doors, roof, and rails to frame
- Ventilated front and rear doors
- Split-rear ventilated rear doors for better clearance in hot aisle
- Numbered U positions front and back
- Open bottom for unobstructed under-floor access
- 1700 kg (3,750 lb) static load, 1020 kg (2,250 lb) dynamic (rolling) load\*
- UL Listed
- Electronic Industries Association (EIA)/ECA-310-E compliant
- Meets IBC® seismic requirements with proper bolt-down hardware

\*Excluding 12, 18, and 24U heights

Available as a complete Micro Data Center with integrated power.

[Discover more >](#)

Take the NetShelter SX 3D tour.

[Discover more >](#)

# NetShelter SX Enclosures Selection

## Applications for height

- 12, 18, and 24U enclosures — Remote offices and small spaces.
- 42U enclosures — Standard height used globally, designed to fit through standard doorways.
- 45U enclosures — Enclosures with additional U-spaces for environments that standardize on a 45U, 7 ft. (213 cm) enclosure height.
- 48, and 52U enclosures — More U-spaces for more equipment in the same footprint.

## Applications for width

- 24 in. (600 mm) wide enclosures are the standard for most server applications. For higher densities, a deeper enclosure may be required.
- 30 in. (750 mm) wide enclosures offer more space for high-capacity cable management and power distribution. Typically, wider enclosures are used for networking applications but the extra side space is often requested in blade server applications.

## Applications for depth

- 32.5 in. (825 mm) is the preferred depth for AV equipment. 42 in. (1070 mm) is the standard depth and meets most low- to medium-density applications.
- 48 in. (1200 mm) deep enclosures are becoming the new standard because of increasing server depth crowding cable and power space.



NetShelter SKU	Height	Width	Depth	Application
AR3003 ①	12U	600 mm (24 in.)	889 mm (35 in.)	Remote server applications
AR3006 ①	18U	600 mm (24 in.)	889 mm (35 in.)	Remote server applications
AR3103 ①	12U	600 mm (24 in.)	1070 mm (42 in.)	Remote server applications
AR3106 ①	18U	600 mm (24 in.)	1070 mm (42 in.)	Remote server applications
AR3104	24U	600 mm (24 in.)	1070 mm (42 in.)	Remote server applications
AR3100 ① ② ③ ④	42U	600 mm (24 in.)	1070 mm (42 in.)	Low/medium-density servers
AR3105 ② ③ ④	45U	600 mm (24 in.)	1070 mm (42 in.)	Low/medium-density servers
AR3107 ① ② ④	48U	600 mm (24 in.)	1070 mm (42 in.)	Low/medium-density servers
AR3150 ① ② ③	42U	750 mm (30 in.)	1070 mm (42 in.)	Networking and blade applications
AR3155 ② ③	45U	750 mm (30 in.)	1070 mm (42 in.)	Networking and blade applications
AR3157 ① ③	48U	750 mm (30 in.)	1070 mm (42 in.)	Networking and blade applications
AR3300 ① ② ③	42U	600 mm (24 in.)	1200 mm (48 in.)	Medium/high-density servers
AR9300SP / AR9300SP-R ①	42U	600 mm (24 in.)	1200 mm (48 in.)	Heavy IT applications
AR3305 ② ③	45U	600 mm (24 in.)	1200 mm (48 in.)	Medium/high-density servers
AR3307 ① ② ③	48U	600 mm (24 in.)	1200 mm (48 in.)	Medium/high-density servers
AR3350 ① ② ③	42U	750 mm (30 in.)	1200 mm (48 in.)	HD networking and blade applications
AR9307SP / AR9307SP-R ①	42U	600 mm (24 in.)	1200 mm (48 in.)	Heavy IT applications
AR3355 ② ③	45U	750 mm (30 in.)	1200 mm (48 in.)	HD networking and blade applications
AR3357 ① ③	48U	750 mm (30 in.)	1200 mm (48 in.)	Networking and blade applications
AR3307X674	52U	600 mm (24 in.)	1200 mm (48 in.)	HD networking and blade applications
AR3357X674	52U	750 mm (30 in.)	1200 mm (48 in.)	HD networking and blade applications
AR3140 ①	42U	750 mm (30 in.)	1070 mm (42 in.)	High-density networking
AR3340 ①	42U	750 mm (30 in.)	1200 mm (48 in.)	Very high-density networking
AR3347	48U	750 mm (30 in.)	1200 mm (48 in.)	Very high-density networking
AR3200	42U	600 mm (24 in.)	1070 mm (42 in.)	2 x 20U compartments for colocation
AR3810	42U	600 mm (24 in.)	825 mm (32.5 in.)	Audiovisual applications
AR3812	42U	600 mm (24 in.)	825 mm (32.5 in.)	Audiovisual applications
AR3814	24U	600 mm (24 in.)	825 mm (32.5 in.)	Audiovisual applications

① The following can be preconfigured without standard doors and side panels. Reference part numbers AR3\_\_\_X609 for no sides, AR3\_\_\_X610 for no doors, and AR3\_\_\_X617 for no sides/no doors. More configurations are available; contact your local APC sales representative for more information.

② TAA compliant enclosure available.

③ White enclosure available.

④ Shock packaging available for shipping enclosures with equipment installed. Check [apc.com](http://apc.com) for allowable equipment weight amounts.

# NetShelter SX Networking Enclosures

Optimized NetShelter SX design for enhanced networking application support and a superior solution for side airflow networking switches

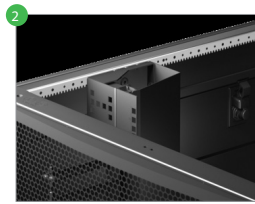
## 1 Cable access roof

- Extra-large cable access slots for high-density cabling and brush strips for air containment
- Two spring-loaded pins allow for easy roof removal and installation with cables in place



## 2 Networking-style mounting rails

- Easily align rails that adjust in 0.25 in. (6mm) increments
- Left vertical mounting rail contains additional cable channel
- Rail position preset to accommodate Cisco switches and cable management



## 3 Preinstalled vertical cable managers

- Front vertical mounting rails feature preinstalled, single-sided vertical cable managers
- Smooth plastic fingers provide proper bend radius for cables



## 4 Vertical mounting rails for side-to-side airflow

- Front-right vertical mounting rail open for improved side airflow



AR3340 with AR7725 duct kits for Cisco Nexus 7009

AR3140\* — 42U x 30 in. (750mm) W x 42 in. (1070mm) D

AR3340\* — 42U x 30 in. (750mm) W x 48 in. (1200mm) D

AR3347 — 48U x 30 in. (750mm) W x 48 in. (1200mm) D

\*For white version add W to part number

## Side airflow cooling

- Support cooling for small and large networking switches mounted within an enclosure.
- Side airflow solution (AR7742/AR7747) for Cisco® Nexus 7018

## All solutions

- Direct cool air at the front of the enclosure directly and predictably to the intake at the side-of-side airflow switches
- Consist of two duct assemblies that act as diverters using the existing fan power of the switch
- Contain a system of baffles located throughout the enclosure to mitigate exhaust air from recirculating back into the air intake



AR3340 networking enclosure and AR7742 side airflow solution for Cisco Nexus 7018