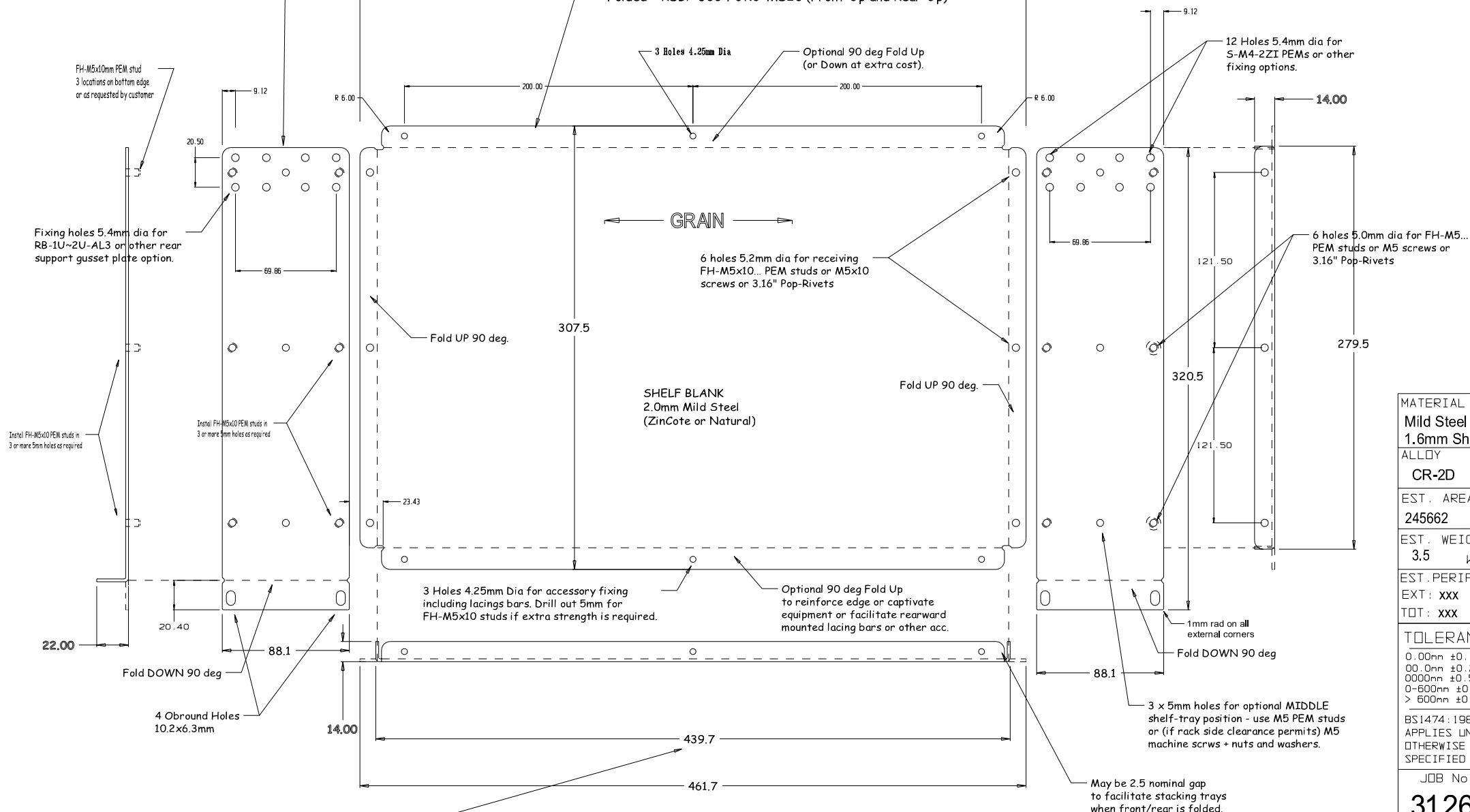


CASA Part Number: RSK-2Ux300F-MS20(Blank)

Blank = RSB2U300F  
Folded = RSB-2Ux300-MS20  
PEMed = RSB-2Ux300-MS20-LH (or RH)

- Blank = RSBP300F
- Folded = RSBP-300-MS20 (sides only)
- Folded = RSBP-300-FURU-MS20 (Front-Up and Rear-Up)



MATERIAL	
Mild Steel	
1.6mm Sheet	
ALLOY	
CR-2D	
EST. AREA	
245662	mm
EST. WEIGHT	
3.5	kg
EST. PERIPHERY	
EXT: XXX	mm
TOT: XXX	mm
TOLERANCE	
0.00mm ±0.1mm	
00.00mm ±0.25mm	
0000mm ±0.5mm	
0-600mm ±0.1mm	
> 600mm ±0.5mm	
BS1474:1987	
APPLIES UNLESS	
OTHERWISE	
SPECIFIED	
JOB No.	
3126?	

The blank size may need to be changed to achieve 439.6mm opening between RSB ( $439.6 + 22 + 22 = 482.6\text{mm} = 19.0''$ )

Note - allowance for paint up to 0.1mm for each face ( $6 \times 0.1 = 0.6$ ) may need to be made depending upon international standards.

<div>CASA</div> Modular Systems		CUSTOMER : CASA Modular Systems				SIZE	DRAWING Reference No.	ISSUE
		DESCRIPTION : 2U x 300mm SHELF KIT - 19" Rack Fixing				A4	RSK2U300F	A
P.O. BOX 38-828, WELLINGTON, NEW ZEALAND		DRAWN : A.W.D	DATE : 31/08/09	APPROVED : ?	DWG. SCALE : 1:1	© COPYRIGHT : CASA Modular Systems ALL RIGHTS RESERVED		
TELEPHONE : (64-4) 5687 277 FACSIMILE : (64-4) 5685 161								