

# Mains Transformer



<http://www.casa.co.nz>

Edition: 15/07/2011

Type: **24V-30VA-DW-DT3228-11**

**Brand:** IDATA (EEC?)

**Type #:** DT3228-11

**Model:**

**OEM #:** 70-004 (?)

**Input:** 230Vac 50Hz (non-tapped)

**Output:** 24 @ 1.25A

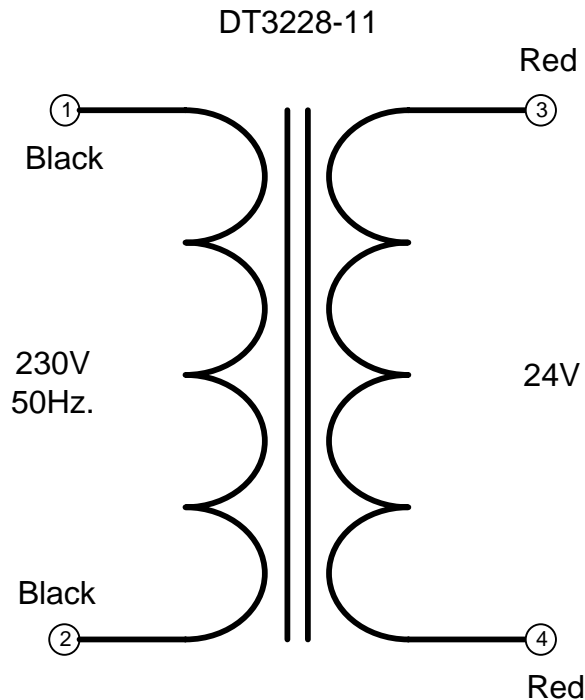
**Power:** 30VA (verified)

**Size:** 70 dia x 44 mm (thick including packing washers)

**Weight:** 0.56 kg

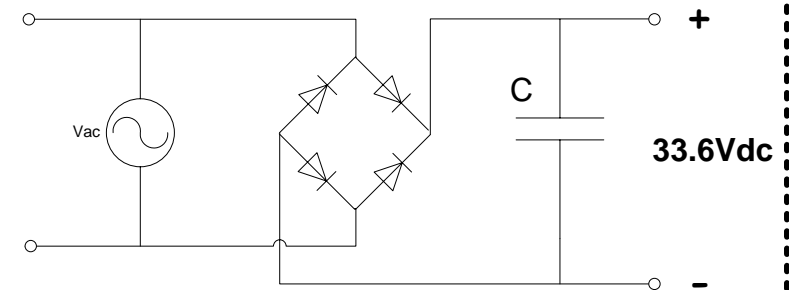
**Fixing:** core thru-hole (with packing washers)

**Comments:** very nice tidy transformer with optional 3/16" QC tags and mains filter capacitor



**NOTICE** – the information on this page is not guaranteed for accuracy – CASA accepts no responsibility (express or implied) for any errors or the consequence therefrom.

## Optional Rectifier Assembly



## Basic Un-Regulated DC PSU – Quick Calculator

$$C = (I \times 80,000) / V_{dc}$$
$$(1.25 \times 80,000) / 33.6 = 2,976\mu F$$

C = Capacitor in microFarads  
I = Current (output) in Amps  
Vdc = Volts (output)

P = Power of load (or transformer) in Watts (VoltAmps)  
Vac = input Volts from transformer  
Vdc = Vac x 1.4 (using a full-bridge rectifier)

Two or more identical transformers may be series-parallel arranged for higher currents and/or voltages (phasing observed)

NOTE – these approximations exclude copper losses etc. in the transformer and external wiring