



Type: **EG500A0-9F-Mabuchi**

General Data

Type: EG500A0-9F

Brand: Mabuchi (Japan)

OEM #: NA (with 6mm OD x 5mm rubber pulley)

Frame: Round/Circular

- Volts: 9Vdc (5~12V nominal)
- Current: 0.xx A (cont.) 0.xx Amp peak?
- Output: x~x Watts (nominal)
- RPM: 2400 @ 9V (no-load)
- Wires: 2 wire (100mm nominal)

Shaft: x.x mm dia x 8mm long with small flat-belt pulley

Shaft-Detail: Plain

Size: 36 mm dia. x 25 mm (nominal) + shaft

Weight: 75gms (0.075kg)

- Fixing: 6 x M2.5 tapped holes on 25mm PCD

Further Data: <ftp://ftp>

Condition: Used (as removed from de-comissioned equipment)

Comments: a resilient-mounted low-cost DC motor for light-duty applications – includes speed-regulator circuit C1470 - has bronze-bushes both ends.

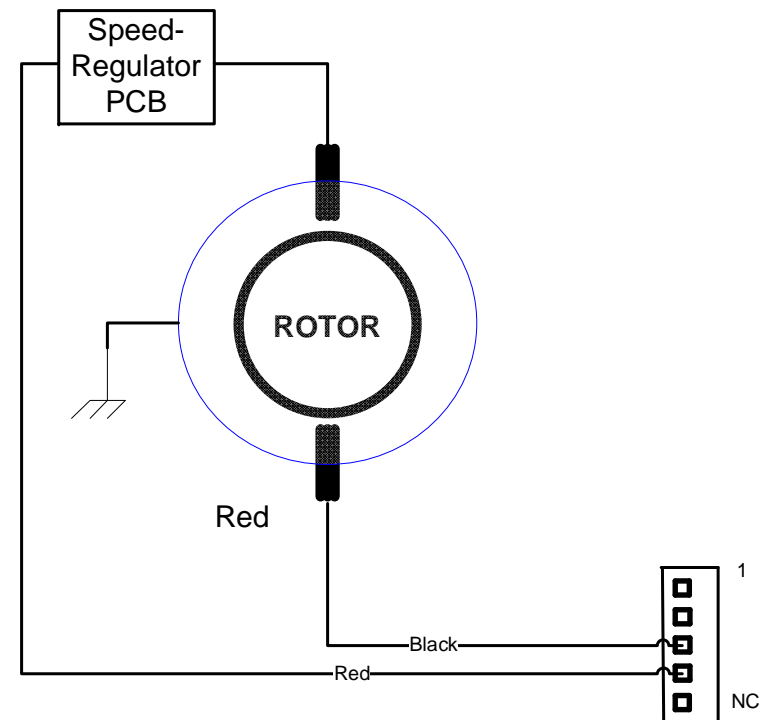
Table of Speeds: See below

Stall-Current (test-only):

xxmA @ 5V (xx00rpm)

xxmA @ 10V (xx00rpm)

xxmA @ 12V (xx00rpm)



NOTICE – the information on this page is not guaranteed for accuracy – CASA accepts no responsibility (neither expressed nor implied) for any errors or the consequence therefrom.