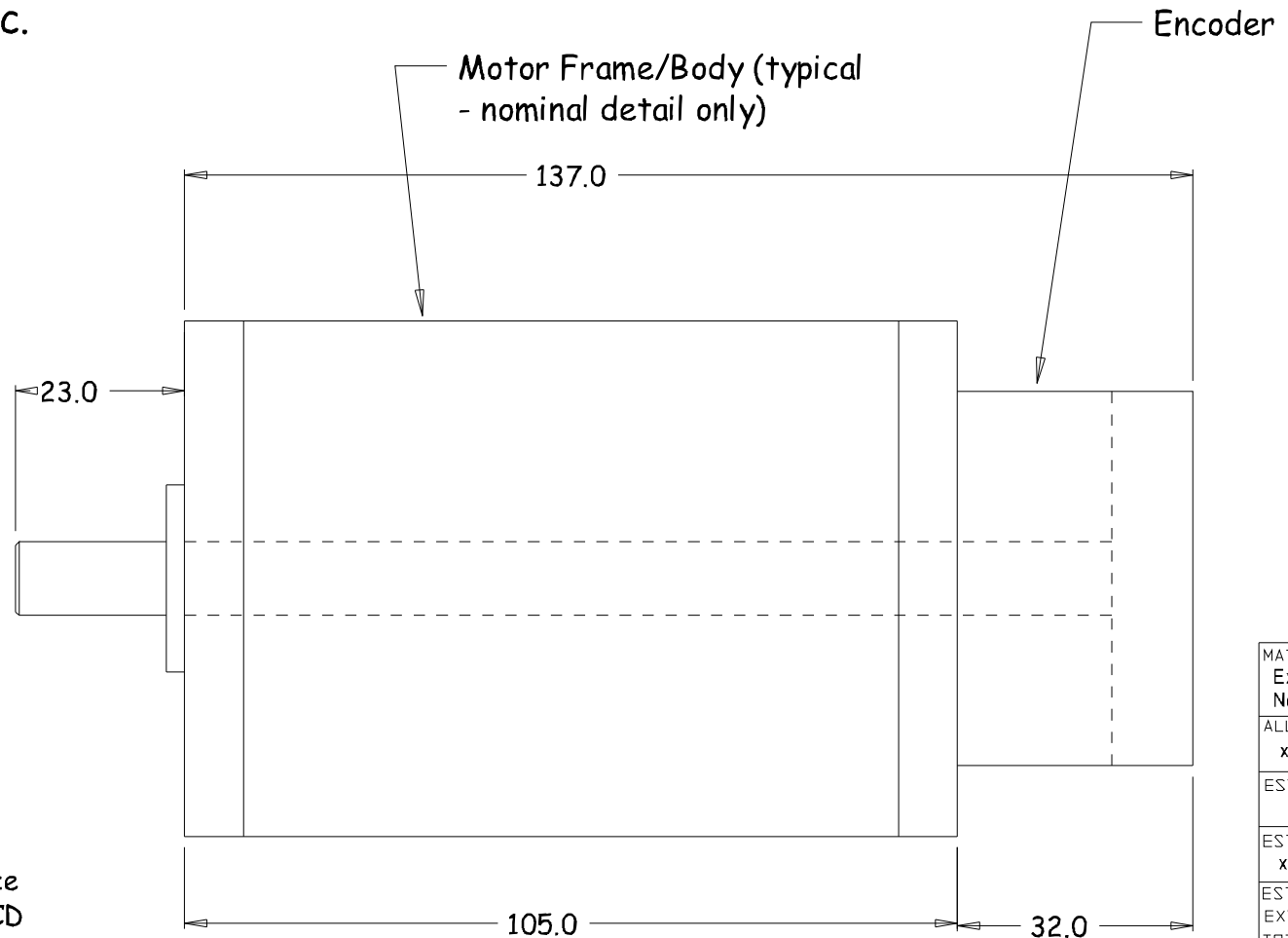
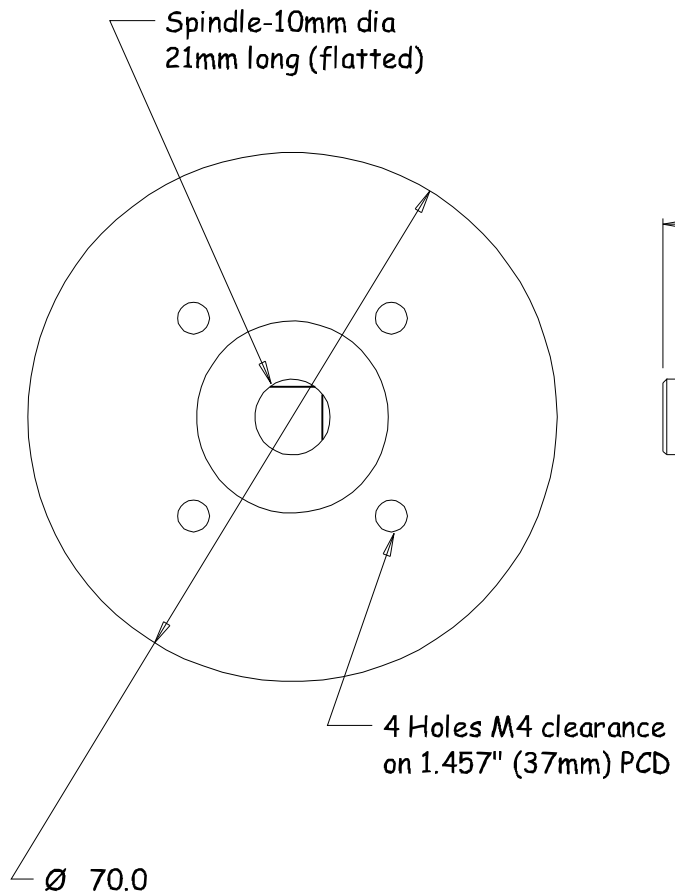


Brand: Minertia or Hathaway (fixing & outline)

Types: UGJMEE-02; 9928008; etc.



MATERIAL Extrusion No. xxxx
ALLOY xxxx
EST. AREA xxx mm
EST. WEIGHT xxx kg/m
EST. PERIPHERY EXT: xxx mm TOT: xxx mm
TOLERANCE 0.00mm ±0.1mm 00.0mm ±0.25mm 0000mm ±0.5mm 0-600mm ±0.1mm > 600mm ±0.5mm
BS1474:1987 APPLIES UNLESS OTHERWISE SPECIFIED
JOB No. 3xxx

Note - Body-outlines vary from make-to-make.

For technical details of motor please refer to:
<http://www.casa.co.nz/motors/dc/pmdc/encoded/>

CASA Modular Systems P.O. BOX 38-828, WELLINGTON, NEW ZEALAND TELEPHONE : (64-4) 5687 277 FACSIMILE : (64-4) 5685 161	CUSTOMER : CASA Modular Systems				SIZE	DRAWING Reference No.	ISSUE
	DESCRIPTION : Minertia + Hathaway DC Motor & Fixing Detail				A4	UGJMEE-02	A
	DRAWN : AWD	DATE : 24/10/12	APPROVED : ?	DWG. SCALE : 1:1	© COPYRIGHT : CASA Modular Systems ALL RIGHTS RESERVED		