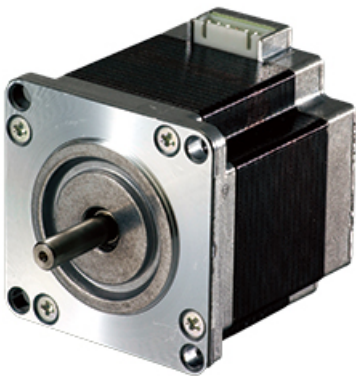


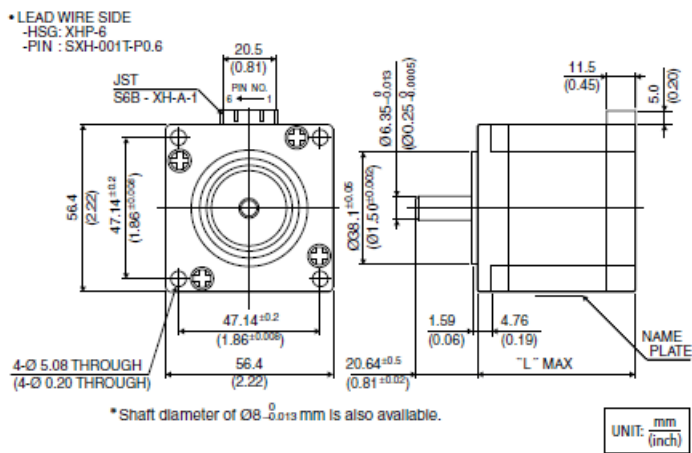
# 23KM-K(56□ 1.8°)

2024/02/28

## Appearance



## Overall View



## Size

Model	size "L"	size "L"
-------	----------	----------

## 23KM-K(56□ 1.8°)

2024/02/28

	[mm]	[Inch]
23KM-K2**	42.0	1.65
23KM-K3**	50.0	1.97
23KM-K0**	54.0	2.13
23KM-K1**	66.0	2.60
23KM-K7**	76.0	2.99

## Wiring Diagram

PHASE	A	A COM	A/	B	B COM	B/
PIN NO.	1	2	3	4	5	6

## Specifications

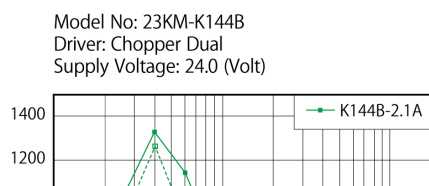
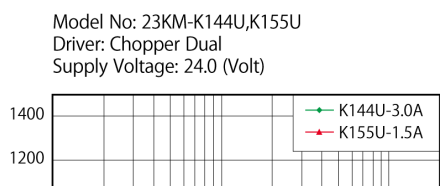
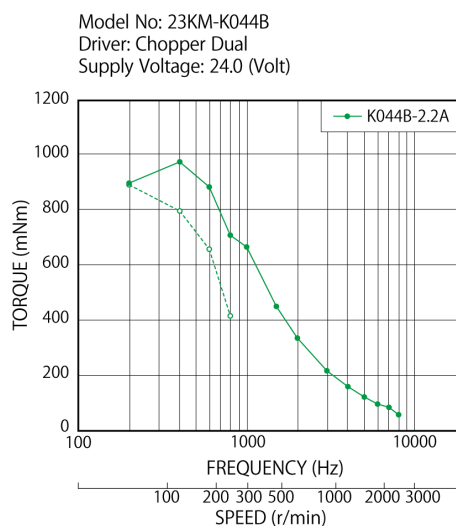
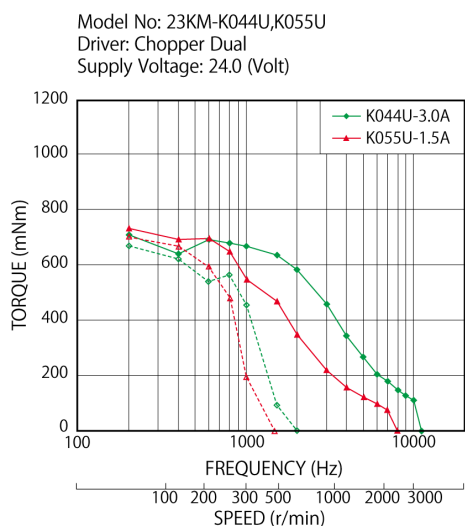
Model	Outer Diameter [mm]	Step Angle [°]	Drive Sequence	Rated Current [A]	Resistance [ohms]	Holding Torque [mN · m]
23KM-K044U	56.4	1.800	UNI-POLAR	3.00	0.85	760
23KM-K055U	56.4	1.800	UNI-POLAR	1.50	3.30	760
23KM-K144U	56.4	1.800	UNI-POLAR	3.00	1.00	1050
23KM-K155U	56.4	1.800	UNI-POLAR	1.50	3.90	1050
23KM-K249U	56.4	1.800	UNI-POLAR	2.00	1.30	420
23KM-K255U	56.4	1.800	UNI-POLAR	1.50	2.30	420
23KM-K349U	56.4	1.800	UNI-POLAR	2.00	1.50	650
23KM-K355U	56.4	1.800	UNI-POLAR	1.50	2.90	650
23KM-K744U	56.4	1.800	UNI-POLAR	3.00	1.15	1200
23KM-K755U	56.4	1.800	UNI-POLAR	1.50	4.60	1200
23KM-K044B	56.4	1.800	BI-POLAR	2.20	1.70	1000
23KM-K144B	56.4	1.800	BI-POLAR	2.10	2.00	1250
23KM-K249B	56.4	1.800	BI-POLAR	1.40	2.40	540
23KM-K349B	56.4	1.800	BI-POLAR	1.40	3.00	800
23KM-K744B	56.4	1.800	BI-POLAR	2.00	2.30	1500

# 23KM-K(56□ 1.8°)

2024/02/28

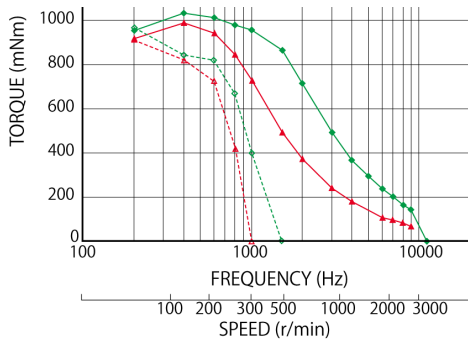
Model	Inductance [mH]	Rotor Inertia [g · cm <sup>2</sup> ]	Detent Torque [mN · m]	Mass [g]
23KM-K044U	1.8	200.0	34.0	680
23KM-K055U	6.7	200.0	34.0	680
23KM-K144U	2.2	290.0	49.0	900
23KM-K155U	8.0	290.0	49.0	900
23KM-K249U	1.9	120.0	20.0	470
23KM-K255U	3.6	120.0	20.0	470
23KM-K349U	2.9	180.0	29.0	590
23KM-K355U	5.5	180.0	29.0	590
23KM-K744U	2.7	360.0	50.0	1050
23KM-K755U	10.2	360.0	50.0	1050
23KM-K044B	7.2	200.0	34.0	680
23KM-K144B	8.7	290.0	49.0	900
23KM-K249B	7.7	120.0	20.0	470
23KM-K349B	11.8	180.0	29.0	590
23KM-K744B	10.6	360.0	50.0	1050

## Torque/Speed Characteristics

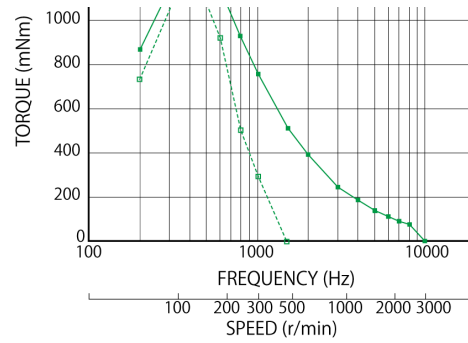


23KM-K(56□ 1.8°)

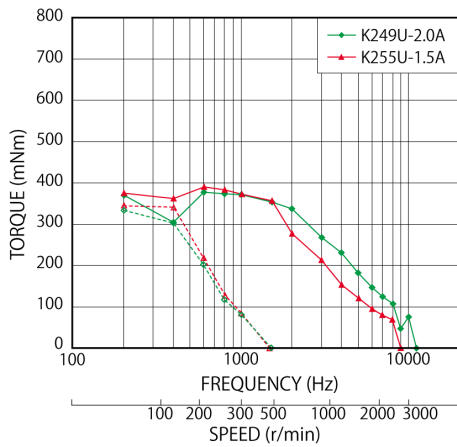
2024/02/28



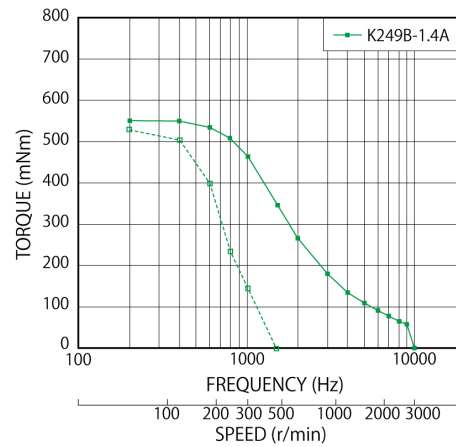
Model No: 23KM-K249U, K255U  
Driver: Chopper Dual  
Supply Voltage: 24.0 (Volt)



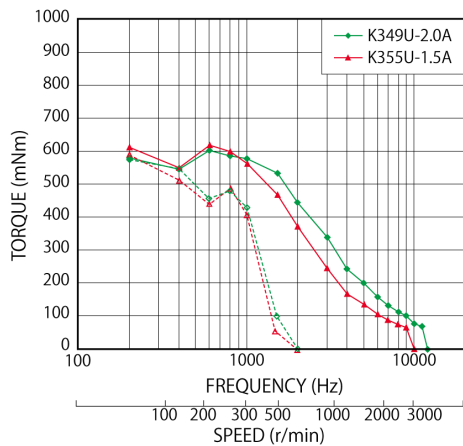
Model No: 23KM-K249B  
Driver: Chopper Dual  
Supply Voltage: 24.0 (Volt)



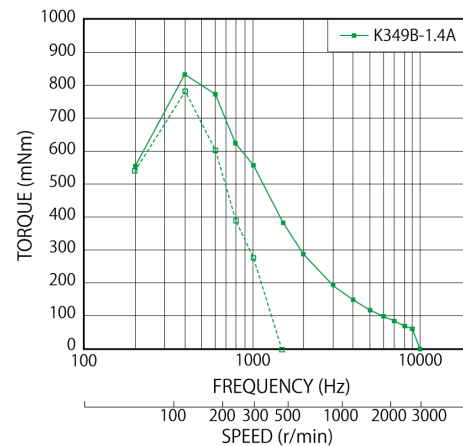
Model No: 23KM-K349U, K355U  
Driver: Chopper Dual  
Supply Voltage: 24.0 (Volt)



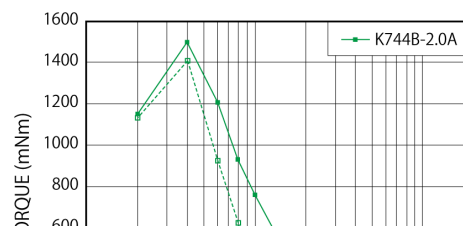
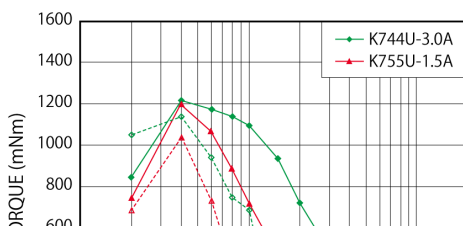
Model No: 23KM-K349B  
Driver: Chopper Dual  
Supply Voltage: 24.0 (Volt)



Model No: 23KM-K744U, K755U  
Driver: Chopper Dual  
Supply Voltage: 24.0 (Volt)

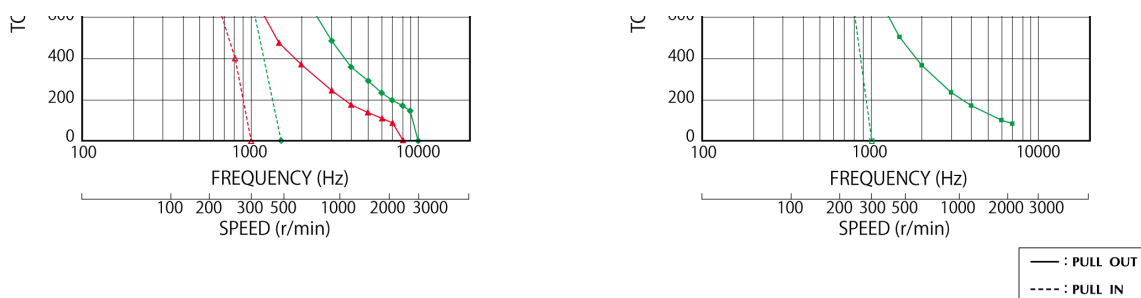


Model No: 23KM-K744B  
Driver: Chopper Dual  
Supply Voltage: 24.0 (Volt)



## 23KM-K(56□ 1.8°)

2024/02/28



## Case Studies

**We can customize to meet your various requests! [Stepping motors]**