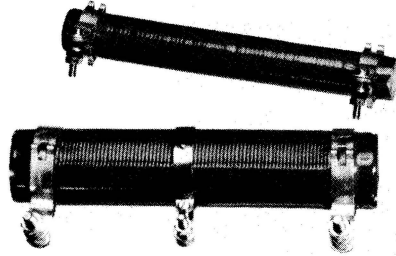


# fixed resistors

## wirewound

2322 321 to 324 MAINTENANCE TYPES  
fixed or adjustable, with side terminals



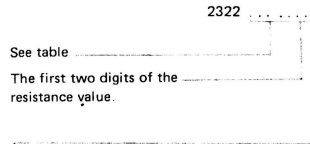
Rated dissipation;  $T_{amb} = 40^{\circ}C$   
mounted on metal plate  
Temperature coefficient  
Climatic category IEC 68

P, see table  
1,2 P  
-50 to +140 ppm/ $^{\circ}C$   
55/155/56

P	coating	resistance range	tolerance	catalogue no.	
				2322 followed by fixed	adjustable
W			%		
8	cement	1 $\Omega$ - 100 $\Omega$	10	323 14 ...	-
		110 $\Omega$ - 150 $\Omega$	5	323 34 ...	-
10	enamel	160 $\Omega$ - 6,8 k $\Omega$	5	321 34 ...	-
		30 $\Omega$ - 300 $\Omega$	5	323 32 ...	324 32 ...
16	cement	330 $\Omega$ - 12 k $\Omega$	5	321 32 ...	-
		330 $\Omega$ - 3,3 k $\Omega$	5	-	322 32 ...
25	enamel	1,5 $\Omega$ - 2,7 $\Omega$	10	323 10 ...	324 10 ...
		3 $\Omega$ - 620 $\Omega$	5	323 30 ...	324 30 ...
40	cement	680 $\Omega$ - 24 k $\Omega$	5	321 30 ...	-
		680 $\Omega$ - 6,8 k $\Omega$	5	-	322 30 ...
60	enamel	2,7 $\Omega$ - 15 $\Omega$	10	323 08 ...	324 08 ...
		16 $\Omega$ - 820 $\Omega$	5	323 28 ...	324 28 ...
100	cement	1 k $\Omega$ - 39 k $\Omega$	5	321 28 ...	-
		1 k $\Omega$ - 9,1 k $\Omega$	5	-	322 28 ...
160	enamel	4,7 $\Omega$ - 1,6 k $\Omega$	5	323 26 ...	324 26 ...
		1,8 k $\Omega$ - 75 k $\Omega$	5	321 26 ...	-
250	cement	1,8 k $\Omega$ - 18 k $\Omega$	5	-	322 26 ...
		3 $\Omega$ - 2,2 k $\Omega$	5	323 24 ...	324 24 ...
100	enamel	2,4 k $\Omega$ - 68 k $\Omega$	5	321 24 ...	-
		2,4 k $\Omega$ - 24 k $\Omega$	5	-	322 24 ...
160	cement	6,8 $\Omega$ - 4,3 k $\Omega$	5	323 23 ...	324 23 ...
		4,7 k $\Omega$ - 120 k $\Omega$	5	321 23 ...	-
250	enamel	4,7 k $\Omega$ - 47 k $\Omega$	5	-	322 23 ...
		10 $\Omega$ - 47 k $\Omega$	5	323 22 ...	324 22 ...
160	cement	10 $\Omega$ - 47 k $\Omega$	5	323 22 ...	324 22 ...
		16 $\Omega$ - 11 k $\Omega$	5	323 21 ...	324 21 ...

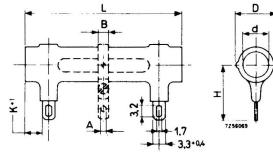
P	L <sub>max</sub>	D <sub>max</sub>	d <sub>min</sub>	K	H	E	B	A	thread
8	26	11,5	5	2,5	14	-	-	-	-
10	41	11,5	4,2	4	14	-	5	2,8	-
16	62	11,5	4,2	4	14	-	5	2,8	-
25	64	16	7,2	4	20	-	6	3,2	-
40	103	16	7,2	4	20	-	6	3,2	-
60	103	32	12,5	6	33	8,5	6	-	M4
100	165	32	12,5	6	33	8,5	6	-	M4
160	165	44	20	8	40	10	8	-	M5
250	256	44	20	8	40	10	8	-	M5

### Composition of the catalogue no.



- 8 for R of 1 to 8,2  $\Omega$
- 9 for R of 10 to 82  $\Omega$
- 1 for R of 100 to 820  $\Omega$
- 2 for R of 1 to 8,2 k $\Omega$
- 3 for R of 10 to 82 k $\Omega$
- 4 for R of 100 to 120 k $\Omega$

### P $\leq$ 40 W



### P $\geq$ 60 W

