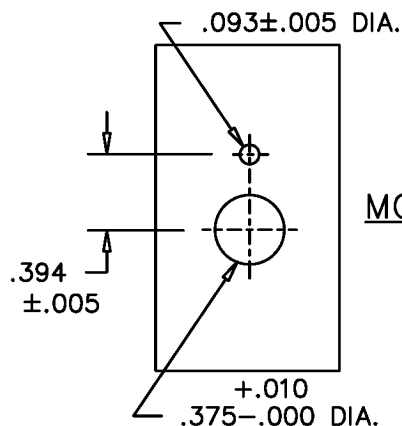


THIS DOCUMENT CONTAINS PROPRIETARY DATA OF POLARIS INDUSTRIAL ENTERPRISES, INC. NO DISCLOSURE, REPRODUCTION, OR USE OF ANY PART THERE OF MAY BE MADE EXCEPT BY WRITTEN PERMISSION.

REV.	BY	DATE	APPRVL.	P/N	MB25
B	DMS	5/12/98		ADDED MODEL CHART	

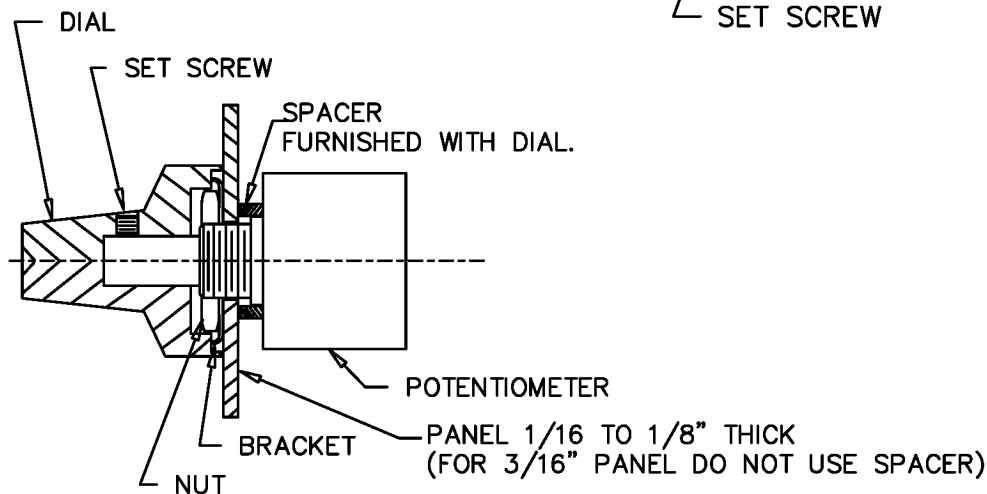
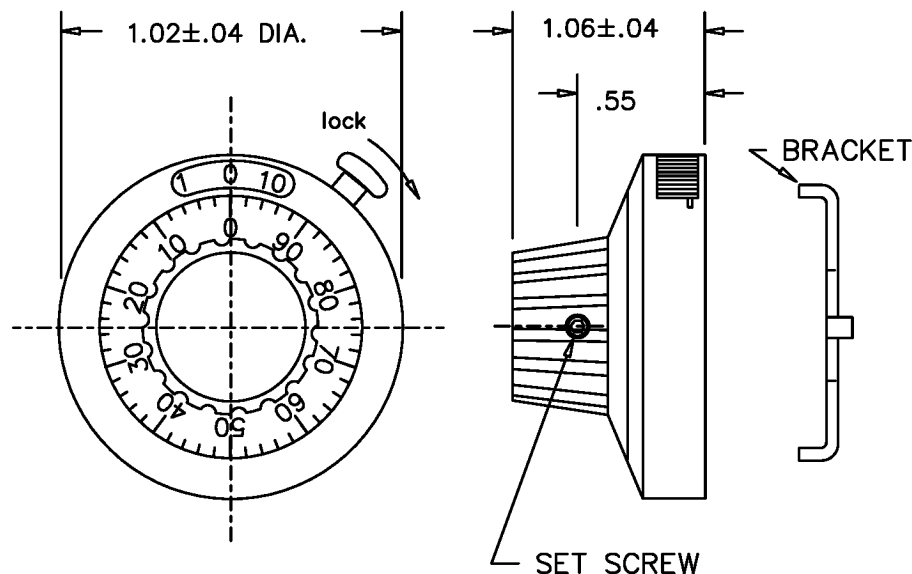


## MOUNTING METHOD

## SPECIFICATIONS

NUMBER OF TURNS ——— UP TO 10  
 NUMBER OF GRADUATIONS ——— 50 PER TURN  
 SHAFT MTG. DIA. ——— SEE CHART  
 LOCK DEVICE ——— OVER THE CENTER ACTION  
 OPERATING TEMPERATURE ——— -30°C TO +60°C

MODEL	MATCHING SHAFT SIZE	COLOR	LOCK
MB25N-1/8	1/8	SATIN (WHITE NUMBERS)	NO
MB25N-1/4	1/4	SATIN (WHITE NUMBERS)	
MB25N-6MM	6MM	SATIN (WHITE NUMBERS)	
MBA25N-1/8	1/8	BLACK (WHITE NUMBERS)	NO
MBA25N-1/4	1/4	BLACK (WHITE NUMBERS)	
MBA25N-6MM	6MM	BLACK (WHITE NUMBERS)	
MB25L-1/8	1/8	SATIN (WHITE NUMBERS)	YES
MB25L-1/4	1/4	SATIN (WHITE NUMBERS)	
MB25L-6MM	6MM	SATIN (WHITE NUMBERS)	
MBA25L-1/8	1/8	BLACK (WHITE NUMBERS)	YES
MBA25L-1/4	1/4	BLACK (WHITE NUMBERS)	
MBA25L-6MM	6MM	BLACK (WHITE NUMBERS)	



SCALE NONE  
 DATE: 8-6-86  
 BY

THIS DOCUMENT CONTAINS PROPRIETARY DATA OF POLARIS INDUSTRIAL ENTERPRISES, INC. NO DISCLOSURE, REPRODUCTION, OR USE OF ANY PART THERE OF MAY BE MADE EXCEPT BY WRITTEN PERMISSION.

ETI  
 SYSTEMS CARLSBAD CALIFORNIA

## TOLERANCES

XX = +/- .010" FRACT. = +/- 1/64"  
 XXX = +/- .005" ANGLES = +/- 1/2°

APPRV'D BT  
 CODE IDENT:  
 19477

TITLE  
 CONCENTRIC  
 TURNS COUNTING DIAL

PART NO.

MB25

ALL SPECIFICATIONS SUBJECT TO CHANGE WITHOUT NOTICE.