

# PHILIPS

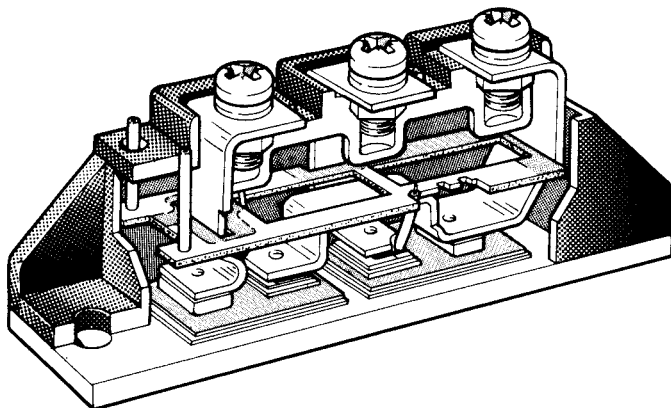
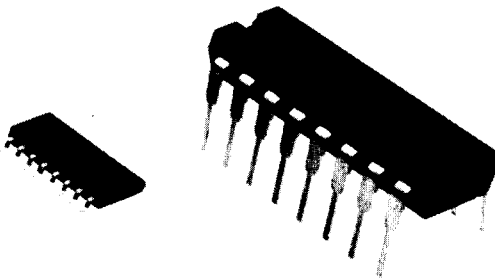
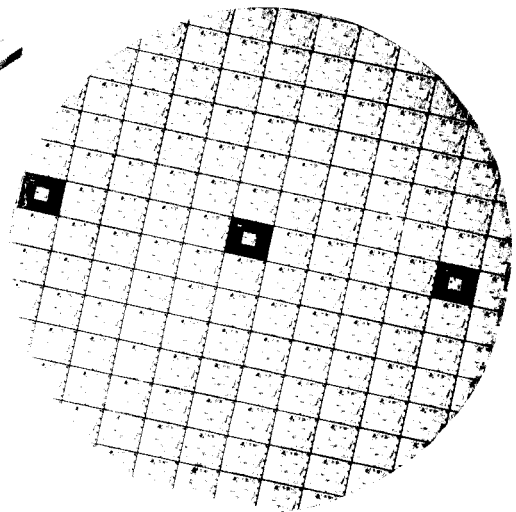
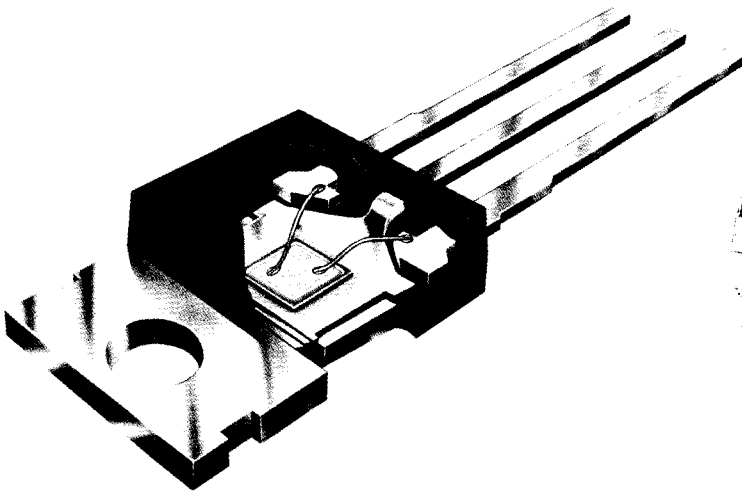


Electronic  
components  
and materials

# ELCOMA

preferred range of  
active components  
price list

May 1982



PHILIPS ELCOMA TRADE PRICE LIST

ACTIVE DEVICES 5.5.82

<u>TYPE</u>	<u>DESCRIPTION</u>	<u>TRADE</u>	<u>TYPE</u>	<u>DESCRIPTION</u>	<u>TRADE</u>
1N4001	D 50V 1A GP D015	0.14	BAW62	D 75V .2A GPSW D035	0.10
1N4002	D 100V 1A GP D015	0.15	BAX12	D 90V .4A AVL D035	0.28
1N4004	D 400V 1A GP D015	0.18	BAX18A	D 75V .5A GP D035	0.20
1N4007	D 1KV 1A GP D015	0.20	BB119	VCAP 15-30PF HF D035	0.34
1N4148	D 75V .2A GP-SW D035	0.10	BB204B	VCAP DUAL FM T092	0.93
2016	SRAM 2KX8 100NS	15.84	BB212	VCAP DUAL AM 8V T092	2.35
2114L	ST RAM 1KX4 300NS	3.10	BB405G	VCAP 3-18PF VHF D034	0.28
2532	EPROM 4KX8 450NS	15.18	BB809	VCAP 5-30PF VHF D034	0.46
2621	PAL SYNC GEN	6.92	BB909B	VCAP 3-33PF VHF D035	0.46
2636N	PROG VIDEO INTERFACE	23.07	BC327	PNP 50V .5A GP T092	0.27
2637N	UNIVERSAL VIDEO INTF	43.97	BC327-40	PNP 50V GP T092	0.32
2650A-1N	CPU 8BIT 2MHZ	28.08	BC328	PNP 30V .5A GP T092	0.27
2650AN	CPU 8BIT 1.25MHZ	20.13	BC337	NPN 50V .5A GP T092	0.19
2651N	PROG COMS INTF	16.05	BC337-25	NPN 50V GP T092	0.25
2652N	SYNC COMS CONTROLLER	33.11	BC337-40	NPN 50V GP T092	0.31
2653N	POLYNOMIAL GEN CHKR	16.05	BC338	NPN 30V .5A GP T092	0.19
2661-1N	ENH PROG COMS INIF	21.89	BC368	NPN 25V 1A GP T092	0.35
2661-2N	ENH PROG COMS INIF	21.89	BC369	PNP 25V 1A GP T092	0.46
2670N	DCGG OF CRT CHIPSET	14.15	BC546	NPN 80V .1A GP T092	0.13
2671N	PKCC OF CRT CHIPSET	24.11	BC546A	NPN 80V GP T092	0.13
2672N	PVTC OF CRT CHIPSET	28.21	BC546B	NPN 80V GP T092	0.13
2673N	VAC OF CRT CHIPSET	36.03	BC547	NPN 50V .1A GP T092	0.13
2716	EPROM 2KX8 450NS	8.97	BC547A	NPN 50V GP T092	0.13
2716-1	EPROM 2KX8 350NS	10.09	BC547B	NPN 50V GP T092	0.13
2732	EPROM 4KX8 350NS	15.18	BC547C	NPN 50V GP T092	0.13
2N2905A	PNP 60V .6A SW T039	0.71	BC548	NPN 30V .1A GP T092	0.13
2N3055	NPN 100V 15A T03	1.78	BC548B	NPN 30V GP T092	0.13
2N3866	NPN 55V .4A VHF T039	1.69	BC548C	NPN 30V GP T092	0.13
2SD350A	NPN 1500V 5A T03	3.48	BC549	NPN 30V .1A LN T092	0.15
2SD857A	NPN 80V 4A GP T0220	1.05	BC549B	NPN 30V LN T092	0.15
4116	DRAM 16KX1 200NS	3.33	BC549C	NPN 30V LN T092	0.15
4164	DRAM 65KX1 150NS	25.05	BC550	NPN 50V .1A LN T092	0.15
5516	STRAM 2KX8 250NS	17.94	BC550B	NPN 50V LN T092	0.15
56201D	MICA WASHER T03	0.10	BC550C	NPN 50V LN T092	0.15
56201J	INSUL BUSHES X2 T03	0.22	BC556	PNP 80V .1A GP T092	0.17
56262A	MTG KIT FOR 5MM STUD	0.57	BC556A	PNP 80V GP T092	0.17
56264A	MTG KIT 6.5MM STUD	0.49	BC556B	PNP 80V GP T092	0.17
56295	MTG KIT FOR 5MM STUD	0.49	BC557	PNP 50V .1A GP T092	0.17
56333	MTG KIT FOR T0126	0.21	BC557B	PNP 50V GP T092	0.17
56359B	MICA FOR SCREW T0220	0.10	BC558	PNP 30V .1A GP T092	0.17
56359C	INSUL BUSH T0220	0.10	BC558B	PNP 30V GP T092	0.17
56367	ALUMINA INS CLIP T0220	0.37	BC558C	PNP 30V GP-S T092	0.17
56368A	MICA FOR SCREW S0T93	0.10	BC559	PNP 30V .1A LN T092	0.18
56369	MICA FOR CLIP T0220	0.10	BC559B	PNP 30V LN T092	0.18
56379	CLIP S0T93 + S0T112	0.24	BC560	PNP 50V .1A LN T092	0.18
8035P-6	CPU 8BIT 6MHZ	12.07	BC560B	PNP 50V LN T092	0.18
8243	I/O EXPANDER 8035	8.62	BC637	NPN 60V 1A 1W GP T092	0.33
9312N	8IP MULTIPLEXER	2.65	BC638	PNP 60V 1A 1W GP T092	0.32
9602N	2X MONOSTABLE	1.20	BC639	NPN 100V 1A GP T092	0.33
AA119	D 45V 35MA GP-GE D07	0.31	BC640	PNP 100V 1A GP T092	0.32
BA482	D 35V VHF-BSW S0D58	0.16	BCW70	PNP 50V 100MA GP S0	0.38
BAV19	D 100V .25A FAST D035	0.14	BCW72	NPN 50V 100MA GP S0	0.34
BAV21	D 200V .25A FAST D035	0.15	BCX52	PNP 60V 1A 1W GP S0	0.99
BAV45	D 20V LOWLEAKAGE T018	2.94	BCX56	NPN 100V 1A GP S0	1.02
BAV46	D 5UA/UW MNAVE DETECT	5.09	BCY87	DUAL TRANS 45V T071	12.60
BAV70	D X2 70V .25A GP S0	0.36	BD131	NPN 70V 3A GP T0126	2.21
BAV99	D X2 70V .25A GP S0	0.36	BD132	PNP 45V 3A GP T0126	2.89
BAW56	D X2 70V .25A GP S0	0.36	BD135	NPN 45V 1A GP T0126	0.44

<u>TYPE</u>	<u>DESCRIPTION</u>	<u>TRADE</u>	<u>TYPE</u>	<u>DESCRIPTION</u>	<u>TRADE</u>
BD136	PNP 45V 1A GP T0126	0.50	BLY33	NPN VHF 3W TX T039	2.36
BD139	NPN 100V 1A GP T0126	0.44	BLY83	NPN 175 MHZ 13W TX	7.40
BD140	PNP 100V 1A GP T0126	0.50	BPW22A-11	PHOTOTRANS GP 3MM	0.76
BD201	NPN 45V 8A GP T0220	1.44	BPW50	PHOTO-D IR PIN 930NM	2.03
BD202	PNP 45V 8A GP T0220	1.44	BPX25	PHOTOTRANS LENS T018	6.24
BD233	NPN 45V 2A GP T0126	0.62	BR100-03	DIAC 28-36V D035	0.37
BD234	PNP 45V 2A GP T0126	0.66	BR101	SCS 50V 275MW T072	1.70
BD235	NPN 60V 2A GP T0126	0.66	BRY39	SCS 70V 275MW T072	1.87
BD237	NPN 100V 2A GP T0126	0.71	BSS38	NPN 120V .1A SW T092	0.82
BD238	PNP 100V 2A GP T0126	0.71	BSS68	PNP 110V .1A SW T092	0.85
BD437	NPN 45V 4A GP T0126	0.79	BSW67	NPN 120V 1A SW T039	2.12
BD438	PNP 45V 4A GP T0126	0.83	BSX20	NPN 40V .2A SW T018	0.62
BD647	DARL NPN 80V 8A T0220	1.44	BSX61	NPN 70V 1A SW T039	1.26
BD648	DARL PNP 80V 8A T0220	1.44	BT100A-03	SCR 300V 2A T0220	2.94
BD679	DARL NPN 80V 4A T0126	0.83	BT136-500	TRIAC 4A GP T0220	0.93
BD680	DARL PNP 80V 4A T0126	0.87	BT136-500D	TRIAC 4A SG T0220	0.98
BDT64C	DARL PNP 120V T0220	3.05	BT137-500	TRIAC 8A GP T0220	1.19
BDT65C	DARL NPN 12A T0220	2.72	BT137-500D	TRIAC 8A SG T0220	1.25
BDT93	NPN 80V 10A 90W T0220	2.03	BT138-500	TRIAC 12A T0220	1.36
BDT94	PNP 80V 10A 90W T0220	2.03	BT138-500E	TRIAC 12A T0220	1.42
BDV64A	DARL PNP 80V SOT93	2.80	BT138-600	TRIAC 12A T0220	1.53
BDV65A	DARL NPN 12A SOT93	2.80	BT139-500	TRIAC 16A T0220	1.70
BDX77	NPN 80V 8A SW T0220	1.70	BT139-500E	TRIAC 16A T0220	1.78
BDX78	PNP 80V 8A SW T0220	1.70	BT139-600	TRIAC 16A T0220	1.87
BF198	NPN 40V IF-HF T092	0.22	BT151-500R	SCR 12A GP T0220	1.27
BF199	NPN 40V IF-HF T092	0.22	BT151-650R	SCR 12A T0220	1.44
BF241	NPN 40V 25MA IF T092	0.32	BT152-800R	SCR 20A GP T0220	3.09
BF245B	NJFET 30V GP T092	0.76	BT153	SCR 500V 6A F T0220	2.03
BF245C	NJET 30V .3W T092	0.76	BT154	SCR 750V 8A F T0220	2.55
BF256B	NJFET .3W UHF T092	0.82	BT155-800R	SCR 15A F T0220	5.15
BF256C	NJFET 30V UHF T092	0.82	BTV24-1200R	SCR 70A T065	38.12
BF324	PNP 30V .5GHZ LN T092	0.27	BTV34-600G	TRIAC 55A T065	31.83
BF337	NPN 250V .1A VO T039	3.12	BTV58-1000R	GTOSCR 10A T0220	5.88
BF422	NPN 250V 50MA VO T092	0.36	BTV58-600R	GTOSCR 10A T0220	5.15
BF423	PNP 250V 50MA VO T092	0.36	BTW34-1200G	TRIAC 55A T0103	59.67
BF450	PNP 40V 25MA T092	0.23	BTW38-1200R	SCR 16A T064	11.33
BF494	NPN 30V .3GHZ HF T092	0.23	BTW38-600R	SCR 16A T064	8.25
BF495	NPN 30V .2GHZ HF T092	0.23	BTW42-1200R	SCR 16A T064	12.60
BF536	PNP 30V RF-VHF S0	0.56	BTW45-600R	SCR 25A T048	9.55
BF859	NPN 300V .1A VO T0202	1.10	BTW45-800R	SCR 25A T048	10.36
BF871	NPN 250V 50MA T0202	0.76	BTW58-1000R	GTOSCR 6.5A	5.15
BF872	PNP 250V 50MA T0202	0.76	BTW58-1500R	GTOSCR 6.5A	6.24
BF982	NMFET DG VHF SOT103	1.31	BTW92-1200R	SCR 31A T048	21.47
BFR31	NJFET 25V GP S0	0.89	BTW92-800R	SCR 31A T048	12.04
BFR90-02	NPN 5GHZ BB SOT37	1.87	BTX18-100	SCR PGATE 1A T039	3.09
BFR90A	NPN 5GHZ BB SOT37	2.03	BTX18-400	SCR PGATE 1A T039	4.12
BFR91A	NPN 6GHZ BB SOT37	2.21	BTX94-600H	TRIAC 25A T048	16.13
BFS17	NPN .25W 1.3GHZ BB S0	1.40	BU326A	NPN 900V 6A 60W T03	3.39
BFS19	NPN .25W 260MHZ HF S0	0.41	BU426	NPN 800V 6A 70W SOT93	3.53
BFS20	NPN .25W 450MHZ HF S0	0.47	BUR20	125V 50A 250W TRANS	15.24
BFS23A	NPN 4W VHF TX T039	4.05	BUX80	NPN 800V 10A 100W T03	4.94
BFW16A	NPN 1.5W 1.2GHZ T039	1.90	BUX84	NPN 800V 2A SW T0220	2.38
BFX34	NPN 120V 2A SW T039	2.25	BUX86	NPN 800V .5A SW T0126	1.87
BFX89	NPN 30V 1.2GHZ T072	1.21	BUZ10	MOSFET 50V 12A T0220	15.98
BFY50	NPN 80V 1A GP T039	0.83	BUZ20	MOSFET 100V 8A T0220	15.98
BFY52	NPN 40V 1A GP T039	0.62	BY184	D 1800V 5MA SOD34	1.36
BFY90	NPN 30V 1.2GHZ T072	1.21	BY188B	D 25V 1-2A EFF	1.02
BG1895-641	TRIPLER CTV	21.07	BY224-600	BR 4.8A SOT112	2.79

<u>TYPE</u>	<u>DESCRIPTION</u>	<u>TRADE</u>	<u>TYPE</u>	<u>DESCRIPTION</u>	<u>TRADE</u>
BY225-100	BR 4.8A SOT112	2.60	BZV85C15	Z 1W 5% GP D041	0.28
BY225-200	BR 4.8A SOT112	2.72	BZV85C16	Z 1W 5% GP D041	0.28
BY228	D 1500V 5A SOD64	1.02	BZV85C18	Z 1W 5% GP D041	0.28
BY229-800	D 7A F T0220	1.44	BZV85C20	Z 1W 5% GP D041	0.28
BY260-200	BRIDGE RECT 12A	3.82	BZV85C27	Z 1W 5% GP D041	0.28
BY260-600	BRIDGE 12A 600V	4.41	BZV85C33	Z 1W 5% GP D041	0.28
BY261-200	BRIDGE RECT 25A	6.76	BZV85C39	Z 1W 5% GP D041	0.28
BY261-600	BRIDGE 25A 600V	7.35	BZV85C47	Z 1W 5% GP D041	0.28
BY476A	D 16KV 2.5MA SOD56	1.70	BZV85C56	Z 1W 5% GP D041	0.28
BYV21-45	D 28A SCHOTTKY D04	11.76	BZV85C6V8	Z 1W 5% GP D041	0.28
BYV27-200	D 2A UF SOD57	0.68	BZV85C75	Z 1W 5% GP D041	0.28
BYV28-200	D 3.5A UF SOD64	1.32	BZV85C7V5	Z 1W 5% GP D041	0.28
BYV32-150	D DUAL 20A T0220	4.27	BZV85C8V2	Z 1W 5% GP D041	0.28
BYV95B	D 400V 1.5A F SOD57	0.38	BZV85C9V1	Z 1W 5% GP D041	0.28
BYV95C	D 600V 1.5A F SOD57	0.40	BZX79C10	Z .5W 5% GP SOD35	0.12
BYV96E	D 1KV 1.5A F SOD57	0.41	BZX79C11	Z .5W 5% GP SOD35	0.12
BYW29-100	D 7A UF T0220	2.21	BZX79C12	Z .5W 5% GP SOD35	0.12
BYW54	D 600V 2A AVL SOD57	0.32	BZX79C13	Z .5W 5% GP SOD35	0.12
BYW55	D 800V 2A AVL SOD57	0.34	BZX79C15	Z .5W 5% GP SOD35	0.12
BYW56	D 1KV 2A AVL SOD57	0.36	BZX79C16	Z .5W 5% GP SOD35	0.12
BYW95B	D 400V 3A F SOD64	0.61	BZX79C18	Z .5W 5% GP SOD35	0.12
BYW95C	D 600V 3A F SOD64	0.63	BZX79C20	Z .5W 5% GP SOD35	0.16
BYW96E	D 1KV 3A F SOD64	0.66	BZX79C22	Z .5W 5% GP SOD35	0.16
BYX25-1000	D 20A AVL D04	8.40	BZX79C24	Z .5W 5% GP SOD35	0.16
BYX25-1000R	D 20A AVL D04	8.40	BZX79C27	Z .5W 5% GP SOD35	0.16
BYX32-1200	D 150A D094	38.12	BZX79C2V4	Z .5W 5% GP SOD35	0.13
BYX32-1200R	D 150A D094	38.12	BZX79C2V7	Z .5W 5% GP SOD35	0.13
BYX38-1200	D 6A D04	2.80	BZX79C30	Z .5W 5% GP SOD35	0.16
BYX38-1200R	D 6A D04	2.80	BZX79C33	Z .5W 5% GP SOD35	0.16
BYX38-300	D 6A D04	2.72	BZX79C36	Z .5W 5% GP SOD35	0.16
BYX38-300R	D 6A D04	2.72	BZX79C39	Z .5W 5% GP SOD35	0.16
BYX39-1000R	D AVL 95A D04	3.53	BZX79C3V0	Z .5W 5% GP SOD35	0.13
BYX42-1200	D 12A D04	3.30	BZX79C3V3	Z .5W 5% GP SOD35	0.13
BYX42-1200R	D 12A D04	3.30	BZX79C3V6	Z .5W 5% GP SOD35	0.13
BYX42-300	D 12A D04	2.87	BZX79C3V9	Z .5W 5% GP SOD35	0.13
BYX42-300R	D 12A D04	2.87	BZX79C43	Z .5W 5% GP SOD35	0.16
BYX56-1000	D 48A AVL D05	12.17	BZX79C47	Z .5W 5% GP SOD35	0.16
BYX71-350	D 7A F SOD38	1.03	BZX79C4V7	Z .5W 5% GP SOD35	0.11
BYX96-300R	D 30A GP D04	5.00	BZX79C51	Z .5W 5% GP SOD35	0.16
BYX97-1600R	D 47A D05	13.29	BZX79C56	Z .5W 5% GP SOD35	0.16
BZT03C10	Z 3W HISRG SOD57	0.60	BZX79C5V1	Z .5W 5% GP SOD35	0.11
BZT03C100	Z 3W HISRG SOD57	0.60	BZX79C5V6	Z .5W 5% GP SOD35	0.11
BZT03C12	Z 3W HISRG SOD57	0.60	BZX79C62	Z .5W 5% GP SOD35	0.16
BZT03C120	Z 3W HISRG SOD57	0.60	BZX79C68	Z .5W 5% GP SOD35	0.16
BZT03C130	Z 3W HISRG SOD57	0.60	BZX79C6V2	Z .5W 5% GP SOD35	0.12
BZT03C15	Z 3W HISRG SOD57	0.60	BZX79C6V8	Z .5W 5% GP SOD35	0.12
BZT03C150	Z 3W HISRG SOD57	0.60	BZX79C75	Z .5W 5% GP SOD35	0.16
BZT03C18	Z 3W HISRG SOD57	0.60	BZX79C7V5	Z .5W 5% GP SOD35	0.12
BZT03C200	Z 3W HISRG SOD57	0.60	BZX79C7V5	Z .5W 5% GP SOD35	0.13
BZT03C33	Z 3W HISRG SOD57	0.60	BZX79C8V2	Z .5W 5% GP SOD35	0.12
BZT03C47	Z 3W HISRG SOD57	0.60	BZX79C9V1	Z .5W 5% GP SOD35	0.12
BZT03C68	Z 3W HISRG SOD57	0.60	BZX84C10	Z 350MW 5% GP S0	0.47
BZT03C75	Z 3W HISRG SOD57	0.60	BZX84C5V6	Z 350MW 5% GP S0	0.47
BZT03C82	Z 3W HISRG SOD57	0.60	BZY93C10R	ZENER 20W D04	3.40
BZV85C10	Z 1W 5% GP D041	0.28	BZY93C12R	ZENER 20W D04	3.40
BZV85C11	Z 1W 5% GP D041	0.28	BZY93C13R	ZENER 20W D04	3.40
BZV85C12	Z 1W 5% GP D041	0.28	BZY93C15R	ZENER 20W D04	3.40
BZV85C13	Z 1W 5% GP D041	0.28	BZY93C18	ZENER 20W D04	3.40

<u>TYPE</u>	<u>DESCRIPTION</u>	<u>TRADE</u>	<u>TYPE</u>	<u>DESCRIPTION</u>	<u>TRADE</u>
BZY93C18R	ZENER 20W D04	3.40	HEF40195BP	4BIT SHIFT REG	1.81
BZY93C33R	ZENER 20W D04	3.40	HEF40198BP	4X 2IP MUX	1.29
BZY93C47R	ZENER 20W D04	3.40	HEF40208BP	14 STG BIN CTR	2.10
BZY93C75R	ZENER 20W D04	3.40	HEF4021BP	8 BIT SHIFT REG	1.07
BZY93C7V5	ZENER 20W D04	3.40	HEF4022BP	4 STG DIV CTR	1.31
BZY93C7V5R	ZENER 20W D04	3.40	HEF4023BP	3X 3IP NAND	0.63
CA3081N	7 NPN TRANS ARRAY	1.66	HEF40244BP	OCTAL TS BUFFERS	2.55
CA3089N	FM IF SYSTEM	1.94	HEF40245BP	OCTAL 2WAY BUFF	2.81
CL8965	DOPPLER RADAR MODULE	45.05	HEF4024BP	7 STG BIN CTR	1.23
CNX35	OPTOCLPR CTR GT 40%	1.53	HEF4025BP	3X 3IP NOR	0.65
CNX36	OPTOCLPR CTR GT 80%	1.70	HEF4027BP	2X JK FLIP FLOP	0.69
CQW24-11	LED RED DIF 5MM	0.37	HEF4028BP	1 OF 10 DECODER	1.26
CQW54	LED RED DIF 3MM	0.34	HEF4029BP	U-D BIN-DEC CTR	1.60
CQX10-111	LED RED STACKABLE	0.34	HEF4030BP	4X 2IP EXCL-OR	0.65
CQX11-111	LED GRN STACKABLE	0.37	HEF4031BP	64 STG SH REG	2.84
CQX12-111	LED YEL STACKABLE	0.43	HEF4035BP	4B SHIFT REG	1.47
CQX24-11	LED RED CLR 5MM	0.52	HEF40373BP	OCTAL D FLIP FLOP	2.84
CQX51-111	LED RED DIF 5MM	0.37	HEF40374BP	OCTAL T LATCH	2.88
CQY24B-111	LED RED DIF 5MM	0.25	HEF4040BP	12 STG BIN CTR	1.83
CQY54-111	LED RED DIF 3MM	0.23	HEF4041BP	4X TRUE-COMP BUF	0.91
CQY58	LED IR 3MM	0.85	HEF4042BP	QUAD D LATCH	1.23
CQY89A	LED IR 5MM	0.60	HEF4043BP	4X S-R LATCH TS	1.17
CQY94-111	LED GRN DIF 5MM	0.28	HEF4044BP	4X S-R LATCH TS	1.21
CQY95	LED GRN DIF 3MM	0.26	HEF4046BP	PHASE LOCK LOOP	1.06
CQY95-11	LED GRN DIF 3MM	0.26	HEF4047BP	MONO-AST MULTIV	0.85
CQY96	LED YEL DIF 5MM	0.35	HEF4049BP	6X INV BUFFERS	0.68
CQY96-1V	LED YEL DIF 5MM	0.38	HEF4050BP	6X BUFFERS	0.71
CQY97	LED YEL DIF 3MM	0.33	HEF4051BP	8X ANALOG SW	2.07
CXY11B	D GUNN 10MW AT 10GHZ	18.13	HEF4052BP	2X 4 ANALOG SW	2.18
HEF4000BP	2X 3IP NOR + INV	0.65	HEF4053BP	3X 2 ANALOG SW	2.21
HEF4001BP	4X 2IP NOR	0.52	HEF4059BP	PROG DIV CTR	5.46
HEF4001BT	4X 2IP NOR	0.76	HEF4060BP	14 STG DIV OSC	1.09
HEF4002BP	2X 4IP NOR	0.65	HEF4066BP	4X ANALOG SW	0.93
HEF4006BP	18 BIT SH REG	1.26	HEF4066BT	SO 4XANALOG SW	1.23
HEF4007UBP	2X COMP PR + INV	0.65	HEF4067BP	16CH ANA MUX-DMUX	4.94
HEF4008BP	4 BIT BIN ADDER	1.32	HEF4068BP	8IP NAND GATE	0.65
HEF40097BP	6X BUFFER TS	0.83	HEF4069UBP	6XU BUFFERED INV	0.65
HEF40098BP	6X INV BUF TS	0.91	HEF4069UBT	SO 6XU BUFFERED INV	0.86
HEF40106BP	6X SCHMIDT TRIG	0.65	HEF4070BP	4X2IP EXCL-OR	0.65
HEF4011BP	4X 2IP NAND	0.51	HEF4071BP	4X2IP OR GATE	0.65
HEF4011BT	4X 2IP NAND	0.75	HEF4072BP	2X4IP OR GATE	0.65
HEF4012BP	2X 4IP NAND	0.45	HEF4073BP	3X3IP AND GATE	0.65
HEF4013BP	2X D FLIP-FLOP	0.67	HEF4075BP	3X3IP OR GATE	0.65
HEF4013BT	2X D FLIP-FLOP	0.89	HEF4076BP	4X D LATCH TS	1.30
HEF4014BP	8 BIT SHIFT REG	1.50	HEF4077BP	4X2IP EXCL-NOR	0.65
HEF4015BP	2X 4 BIT SH REG	1.23	HEF4078BP	8 INPUT NOR GATE	0.65
HEF40160BP	4 BIT DEC CTR	1.89	HEF4081BP	4X2IP AND GATE	0.72
HEF40161BP	4 BIT BIN CTR	1.89	HEF4082BP	2X4IP AND GATE	0.65
HEF40162BP	4 BIT DEC CTR	1.89	HEF4085BP	2X2WIDE 2IP AOI	0.67
HEF40163BP	4 BIT BIN CTR	1.89	HEF4086BP	4-WIDE 2IP A-0-INV	0.65
HEF4016BP	4X ANALOG SW	0.82	HEF4093BP	4X2IP NAND SCMT	0.65
HEF40174BP	6X D FLIP-FLOP	1.23	HEF4093BT	SO 4X2IP NAND SCMT	0.86
HEF40175BP	4X D FLIP-FLOP	1.32	HEF4095BP	8 STG BUS REG	1.40
HEF4017BP	5 STG JSON CTR	1.23	HEF4104BP	4XVOLT TRANSLATOR	1.31
HEF4018BP	DIV BY N CTR	1.40	HEF4502BP	6X INV BUFF TS	0.99
HEF40192BP	4BIT U-D DEC CTR	1.63	HEF4505BP	RAM STATIC 64X1	2.90
HEF40193BP	4BIT U-D BIN CTR	1.47	HEF4509BP	DUAL 4 BIT LATCH	2.72
HEF40194BP	4BIT BIDR SH REG	1.89	HEF4510BP	BCD U-D CTR	2.23

<u>TYPE</u>	<u>DESCRIPTION</u>	<u>TRADE</u>	<u>TYPE</u>	<u>DESCRIPTION</u>	<u>TRADE</u>
HEF4510BT	50 BCD U-D CTR	2.95	N7400N	4X 2IP NAND	0.67
HEF4511BP	BCD-7SEGE L-DEC-DR	1.47	N7402N	4X 2IP NOR	0.67
HEF4511BT	BCD-7SEGE LDD SO	1.94	N7403N	QUAD 2-IP NAND GATE	0.67
HEF4512BP	8 INPUT MUX TS	1.26	N7404N	HEX INVERTER	0.71
HEF4514BP	1 OF 16 DMUX	2.63	N7405N	HEX INVERTER	0.71
HEF4515BP	1 OF 16 DMUX	2.55	N7406N	HEX INVERTER	0.89
HEF4516BP	BIN UP-DOWN CTR	2.07	N7407N	HEX BUFFER OC	0.89
HEF4517BP	2X64BIT SHIFT REG	4.44	N7408N	4X 2IP AND	0.67
HEF4518BP	DUAL BCD CTR	1.37	N74107N	2X JK FLIP FLOP	0.95
HEF4519BP	4X2IP MULTIPLEXER	1.12	N7410N	3X 3IP NAND	0.67
HEF4520BP	DUAL BINARY CTR	1.40	N7411N	3X 3IP AND	0.67
HEF4521BP	24 STAGE DIVIDER	1.78	N74121N	MONOSTABLE MULTIVIB	1.03
HEF4522BP	PROG 4B DWN CTR	1.92	N74123N	2X RETRIG MONSTABLE	1.13
HEF4526BP	PROG 4B DWN CTR	1.86	N74132N	4X 2IP SCMDT NAND	1.24
HEF4528BP	3X MONOSTABLE	1.63	N7413N	2X 4IP SCMDT NAND	0.85
HEF4531BP	13IP PARITY GEN	1.00	N74145N	BCD/DC D/DRIVER	1.56
HEF4532BP	8B PRIORITY ENC	1.19	N7414N	6X SCMDT INV	0.95
HEF4534BP	5 DECADE CTR	6.76	N74160N	BCD DECADE CTR	1.38
HEF4538BP	2X MONOSTABLE	1.50	N74161N	4BIT BINARY CTR	1.38
HEF4539BP	2X 4IP MUX	1.17	N74165N	8B SISO/PISO SH REG	1.56
HEF4543BP	BCD-7SEGE L/D/D	1.49	N74175N	4X D FLIP FLOP	1.24
HEF4555BP	2X 10F4 DEC DEMUX	1.21	N7417N	HEX BUFFER OC	0.81
HEF4556BP	2X 10F4 DEC DEMUX	1.21	N74192N	BCD UP/DN CTR	1.52
HEF4557BP	1-64 ADJ SH REG	3.09	N7420N	2X 4IP NAND	0.67
HEF4585BP	4B MAG COMP	1.21	N74221N	2X MONOSTABLE MULTI	1.59
HEF4720BP	256X1 STATIC RAM	6.03	N74279N	4X SET RESET LATCH	1.35
HEF4724BP	8B ADDRABLE LATCH	3.75	N7427N	3X 3IP NOR	0.78
HEF4731BP	4X 64B SH REG	6.76	N7430N	8IP NAND	0.67
HEF4737VP	4X DECADE CTRS	5.80	N7432N	4X 2IP OR	0.78
HEF4738VP	IEC IEEE BUS INTF	24.57	N74367AN	HEX BUF TS	1.17
HEF4739VP	DIG V/METER CCT	12.00	N74368AN	HEX INV BUF TS	1.17
HEF4750VD	FREQ SYNTHESIZER	17.33	N7437N	4X 2IP NAND BUF	0.81
HEF4751VD	FREQ SYNTH DIV	25.07	N7438N	4X 2IP NAND BUF OC	0.81
HEF4752VD	AC MOTOR CTRL	26.00	N7440N	2X 4IP NAND BUF	0.67
L200CV	REGULATOR 2A ADJ VOUT	3.04	N7442N	BCD-DEC DECODER	0.95
L7805CV	3TR 5V 1.5A TO220	1.79	N7445N	BCD TO DEC DRIVER OC	1.66
L7812CV	3TR 12V 1.5A TO220	1.79	N7474N	2X JK FLIP FLOP	0.81
L7815CV	3TR 15V 1.5A TO220	1.79	N7475N	2X 2BIT T LATCH	0.99
L7818CV	3TR 18V 1.5A TO220	1.79	N7476N	2X JK FLIP FLOP	0.81
L7824CV	3TR 24V 1.5A TO220	1.79	N7483N	4BIT FULL ADDER	1.24
L78S05CV	3TR 5V 2A TO220	2.12	N7496N	5B SH REG	1.17
L78S12CV	3TR 12V 2A TO220	2.12	N74LS00N	4X 2IP NAND	0.60
LM301AN	OP AMP	0.81	N74LS01N	4X 2IP NAND OC	0.60
LM311D	COMPARATOR SO	1.45	N74LS02N	4X 2IP NOR	0.60
LM311N	COMPARATOR	1.13	N74LS04N	HEX INVERTER	0.64
LM324D	QUAD OP AMP SO	1.73	N74LS05N	HEX INVERTER	0.64
LM324N	QUAD OP AMP	0.84	N74LS08N	4X 2IP AND	0.64
LM339N	QUAD COMPARATOR	1.20	N74LS107N	2X JK FLIP FLOP	0.81
LM358D	DUAL OP AMP SO	1.48	N74LS109N	2X JK FLIP FLOP	0.81
LM358N	DUAL OP AMP	0.80	N74LS10N	3X 3IP NAND	0.60
LM381N	DUAL PREAMP	2.05	N74LS112N	2X JK FLIP FLOP	0.81
LM393N	DUAL COMPARATOR	1.03	N74LS113N	2X JK FLIP FLOP	0.81
M23CA	SCR 400V 2A TO126	0.85	N74LS11N	3X 3IP AND	0.60
MC1408-7N	8BIT D-A CONV	2.76	N74LS125N	4X BUFFER TS	0.95
MC1458N	DUAL OP AMP	1.03	N74LS126N	4X BUFFER TS	0.95
MC1488N	4X RS232 LINE DRVR	1.77	N74LS132N	4X 2IP SCMDT NAND	1.45
MC1489AN	4X RS232 LINE RCVR	1.77	N74LS136N	4X 2IP EXOR OC	0.89
MC1489N	4X RS232 LINE RCVR	1.77	N74LS138N	10F8 DEC DEMUX	1.17

<u>TYPE</u>	<u>DESCRIPTION</u>	<u>TRADE</u>	<u>TYPE</u>	<u>DESCRIPTION</u>	<u>TRADE</u>
N74LS139N	2X 10F4 DEC DEMUX	1.17	N74LS377N	OCTAL D FF	2.12
N74LS13N	2X 4IP SCMDT NAND	0.85	N74LS378N	HEX D FF	2.02
N74LS14N	6X SCMDT INV	1.24	N74LS37N	4X 2IP NAND BUF	0.67
N74LS153N	2X 4T01 MUX	1.20	N74LS38N	4X 2IP NAND BUF OC	0.67
N74LS154N	10F16 MUX	2.12	N74LS390N	2X DEC RIPPLE CTR	2.55
N74LS155N	2X 20F4 DEC DEMUX	1.56	N74LS393N	2X 4B BIN RIP CTR	2.55
N74LS156N	2X 20F4 DEMUX OC	1.56	N74LS395N	4B CAS SH REG TS	2.48
N74LS157N	4X 2IP MUX	1.06	N74LS40N	2X 4IP NAND BUF	0.60
N74LS158N	4X 2ID INV MUX	1.06	N74LS42N	BCD-DEC DECODER	1.06
N74LS160AN	BCD DECADE CTR	1.56	N74LS445N	BCD-DEC DECDR OC	2.12
N74LS161AN	4BIT BINARY CTR	1.56	N74LS490N	2X RIPPLE CTR	3.52
N74LS162AN	BCD DECADE CTR	1.59	N74LS51N	2X 2WIDE 2IP AOI	0.60
N74LS163AN	4BIT BINARY CTR	1.56	N74LS54N	4WIDE 2+3 IP AOI	0.60
N74LS164N	8BIT SIPO SH REG	1.48	N74LS645N	OCTAL TRANSCEIVER	3.01
N74LS170N	4X4 REG FILE OC	2.76	N74LS670N	4X4 REG FILE	3.06
N74LS173N	4X D FLIP FLOP TS	1.38	N74LS73N	2X JK FLIP FLOP	0.81
N74LS174N	6X D FLIP FLOP	1.20	N74LS74AN	2X JK FLIP FLOP	0.81
N74LS175N	4X D FLIP FLOP	1.20	N74LS75N	2X 2BIT T LATCH	0.89
N74LS181N	4BIT ALU	3.68	N74LS76N	2X JK FLIP FLOP	0.85
N74LS191N	4B BIN UP/DN CTR	1.94	N74LS83AN	4BIT FULL ADDER	1.38
N74LS192N	BCD UP/DN CTR	1.52	N74LS85N	4B MAG COMPARATOR	1.80
N74LS193N	4B BIN UP/DN CTR	1.52	N74LS86N	4X 2IP EXOR	0.81
N74LS194AN	4B BINDIR SH REG	1.24	N74LS90N	DECADE COUNTER	1.06
N74LS195AN	4B SH REG	1.24	N74LS92N	DIV BY 12 CTR	1.06
N74LS197N	4B BIN RIPPLE CTR	1.94	N74LS93N	4B BIN RIPPLE CTR	1.06
N74LS20N	2X 4IP NAND	0.60	N74LS95BN	4B SH REG	1.24
N74LS21N	2X 4IP AND	0.64	N74LS96N	5B SH REG	1.38
N74LS240N	OCTAL INV BUF TS	1.94	N82S123N	PROMN 32X8 TS	3.37
N74LS241N	OCTAL BUF TS	1.94	N82S126N	PROM 256X4 OC	3.68
N74LS242N	4X INV TRANS TS	2.37	N82S129N	PROM 256X4 TS	3.68
N74LS243N	4XTRANSCEIVER TS	2.37	N82S131N	PROM 512X4 TS	6.59
N74LS244N	OCTAL BUFFER TS	1.94	N82S137N	PROM 1KX4 TS	9.19
N74LS245N	OCTAL TRANSCEIVER TS	2.30	N82S141N	PROM 512X8 TS	10.21
N74LS253N	2X 4IP MUX TS	1.10	N82S23N	PROM 32X8 OC	3.37
N74LS257AN	4X 2T01 MUX	1.06	N8T20N	BIDIR MONOSTABLE	5.06
N74LS258AN	4X 2T01 MUX TS	1.10	N8T26AN	QUAD TRANSCEIVER TS	2.65
N74LS260N	2X 5IP NOR	0.74	N8T28N	QUAD INV TRANS TS	3.01
N74LS266N	4X 2IP EXNOR OC	0.78	N8T33N	8BIT BIDIR ADR PORT	7.97
N74LS26N	4X 2IP NAND OC	0.64	N8T97N	HEX BUFFER TS	2.30
N74LS273N	OCTAL D FF OC	2.12	NE5018N	8B D-A CVTR .19%	10.21
N74LS27N	3X 3IP NOR	0.64	NE5019N	8B D-A CVTR .1%	19.70
N74LS283N	4 BIT FULL ADDER	1.56	NE5044N	PROG 7CH RC ENCODER	3.06
N74LS290N	DECADE CTR	1.56	NE5045N	PROG 7CH RC DECODER	3.37
N74LS293N	4B BIN RIPPLE CTR	1.63	NE521N	H/S DUAL DIFF COMP	3.19
N74LS295BN	4B SH REG TS	1.87	NE529N	H-SPEED V COMPARATOR	2.88
N74LS298N	4X 2PORT REG	1.87	NE530N	OP AMP 35V/US	2.05
N74LS30N	8IP NAND	0.64	NE531N	OP AMP 35V/US	2.48
N74LS32N	4X 2IP OR	0.64	NE542N	DUAL PREAMP LN	1.35
N74LS33N	4X 2IP NOR BUFF OC	0.64	NE544N	SERVO AMP	3.08
N74LS363N	OCTAL T LATCH TS	2.76	NE5514N	QUAD OP AMP	2.30
N74LS364N	OCTAL D FF TS	2.76	NE5530N	DUAL OP AMP 35V/US	2.82
N74LS365AN	HEX BUF TS	0.95	NE5532AN	DUAL OP AMP LN	6.40
N74LS366AN	HEX INV BUF TS	0.95	NE5532N	DUAL OP AMP LN	3.83
N74LS367AN	HEX BUF TS	0.95	NE5534AN	OP AMP LN	4.47
N74LS368AN	HEX INV BUF TS	0.95	NE5534N	OP AMP LN	2.65
N74LS373N	OCTAL T LATCH TS	2.48	NE5553N	DUAL POLARITY VREG	2.65
N74LS374N	OCTAL D FF TS	2.48	NE5554N	DUAL POLARITY VREG	2.65
N74LS375N	2X 2B TRANS LATCH	0.95	NE555D	TIMER SO	1.24

NE5535 -  
1A747

<u>TYPE</u>	<u>DESCRIPTION</u>	<u>TRADE</u>	<u>TYPE</u>	<u>DESCRIPTION</u>	<u>TRADE</u>
NE555N	TIMER	0.78	TDA1001A	INTERFERENCE SUPR	3.04
NE5560N	SMPS CONTROLLER	5.51	TDA1008	ORGAN FREQ DIVIDER	3.82
NE5561N	SMPS CONTROLLER	2.12	TDA1010	AUDIO PWR AMP 6W	1.53
NE556N	DUAL TIMER	1.17	TDA1020	AUDIO PWR AMP 12W	2.73
NE558N	QUAD TIMER	2.44	TDA1022	BUCKET BRIGADE 512	4.20
NE564N	PHASE LOCKED LOOP	3.00	TDA1023	TRIAC TRIGGER CCT	2.96
NE565N	PHASE LOCKED LOOP	2.12	TDA1024	TRIAC TRIGGER CCT	2.13
NE566N	FUNCTION GENERATOR	2.12	TDA1028	SIGNAL SOURCE SW	3.88
NE567N	TONE DECODER	1.80	TDA1029	SIGNAL SOURCE SW	3.36
NE570N	AUDIO COMPANDOR	3.83	TDA1060	SMPS CONTROLLER	4.61
NE571N	AUDIO COMPANDOR	2.88	TDA1072	AM RECEIVER	3.56
NE572N	AUDIO COMPANDOR	5.18	TDA1077PX	DTMF PHONE DIALLER	7.90
NE590N	8B ADDRESSABLE DRVR	3.03	TDA1510	2X12W STEREO CAR AM	5.26
NE591N	8B ADDRESSABLE DRVR	3.98	TDA1512	AUDIO PWR AMP 20W	4.61
NE592N	VIDEO AMP	2.30	TDA1576	FM IF AMP DEMOD	3.29
OA90	D 20V 8MA GE D07	0.34	TDA1594	11 LED DRIVER CCT	3.95
OA95	D 90V 50MA GE D07	0.11	TDA2002H	AUDIO AMP 6W	2.54
OM350	HYBRID BB AMP 18DB	7.57	TDA2002V	AUDIO AMP 6W	2.54
OM361	HYBRID MATV AMP 12V	12.36	TDA2522	COLOUR DEMOD COMB	5.06
PCD3320P	INT I LOOP DIALLER	6.10	TDA2525	COLOUR DEMOD COMB	6.00
PH2222A	NPN 80V .8A SW T092	0.25	TDA2530	RGB MATRIX PREAMP	3.95
PH2907A	PNP 60V .6A SW T092	0.37	TDA2541	TV IF AMP DEMOD	3.43
RPY93	INFRA RED D-R 2XELMNT	35.58	TDA2560	CHROM LUM CTRL COMB	4.27
RPY96	INFRA RED D-R 1XELMNT	25.41	TDA2571A	HORZ VERT SYNC SYS	4.74
RTC757A	LED MTG KIT	0.10	TDA2576A	HORZ VERT SYNC SYS	5.14
SAA1027	STEPPER MTR CTRL	4.61	TDA2581	TV SMPS CONTROLLER	2.89
SAA5000A	CTV REMOTE CTRL TX	5.53	TDA2582	TV SMPS CONTROLLER	2.89
SAA5012	CTV REMOTE CTRL RX	8.27	TDA2591B	TV LIN OSC CTRL	4.28
SAA5020	TELETEXT TIC	6.58	TDA2600	TV FRAME OUTPUT	7.11
SAA5030	TELETEXT VIP	10.03	TDA2611A	AUDIO AMP 6W	2.17
SAA5040	TELETEXT TAC	25.07	TDA2620	TV TUNING VOLT SW	3.95
SAA5050	TELETEXT TROM	15.07	TDA2630	TOUCH AMP + SWITCH	5.53
SAF1032	CTV REMOTE CTRL RX	7.08	TDA2631	TOUCH AMP + SWITCH	5.53
SAF1039P	CTV REMOTE CTRL TX	2.23	TDA2640	SMPS CONTROLLER	4.74
SAK140	REV COUNTER	3.99	TDA2652	TV FRAME OUTPUT	7.75
TAA550B	33V TV TUNER REF	0.62	TDA2653	TV FRAME OUTPUT	5.26
TAA6305	PAL SYNC DEMOD	3.56	TDA2654	TV FRAME OUTPUT	2.76
TBA1205	TV IF AMP + DEMOD	1.16	TDA3501	VIDEO CONTROL COMB	9.48
TBA240B	PAL CHROMA RER COMB	3.10	TDA3560	VIDEO CTRL PAL DEC	10.53
TBA520	PAL COLOUR DEMOD	3.95	TDA3650	VERTICAL DEFLECTION	7.11
TBA530	RGB MATRIX PREAMP	3.28	TDA5700	AM/FM RADIO	2.28
TBA540	PAL CHROMA REF COMB	5.06	TEA1002	PAL COLOUR ENCODER	8.33
TBA560B	CHROMA LUM CTRL	3.95	TIP31C	NPN 100V 3A T0220	1.08
TBA560C	CHROMA LUM CTRL	3.95	TIP32C	PNP 100V 3A T0220	1.12
TBA570A	AM/FM RADIO	1.82	UA723CN	VOLTAGE REG	0.81
TBA720A	LINE OSC	3.28	UA741CN	OP AMP	0.67
TBA750BQ	TV IF AMP/DETECTOR	3.74	UA747CN	DUAL OP AMP	1.10
TBA750C	TV IF AMP/DETECTOR	3.37	UA758N	FM STERIO MPLX DEC	1.94
TBA760	VERTICAL DEF PROC	2.91	ULN2003N	7X DARL NPN ARRAY	2.02
TBA810AP	AUDIO PWR AMP 7W	1.83	Z8400AB1	Z80A CPU 4MHZ	12.84
TBA810S	AUDIO PWR AMP 7W	2.15	Z8420AB1	Z80A PIO 4MHZ	9.68
TBA900S1	TV SIGNAL PROCES	3.55	Z8430AB1	Z80A CTC 4MHZ	9.68
TBA920	TV LINE OSC CTRL	1.99	Z8441AB1	Z80A SIG-1 4MHZ	23.72
TC4001BP	QUAD ZIP NOR	0.48	ZM1550	2X 7 SEG DISP TUBE	6.16
TCA270S	TV IF AMP/DETECTOR	6.61	ZM1551	2X 7 SEG DISP TUBE	6.16
TCA280A	TRIAC TRIGGER CCT	2.20	ZM1570	2X 7 SEG DISP TUBE	6.16
TCA440N	AM RECEIVER	2.58			
TCA760B	AUDIO AMP 2N	2.29			