

Mains Transformer



Type: **10V-20VA-DW-42P-45191-134-A**

<http://www.casa.co.nz>

Edition: 05/06/2012

Stock #

42P-45191-134-A

Not registered

General Data

Brand: TSC (Japan)

Model: 42P-45191-134-A (OKI)

OEM: 4YB4056-42P-45191-134A

Input: 220~240ac 50~60Hz
(tapped)

Output: 10V @ ~2 Amps
(Open circuit)

Power: 20VA (estimated)

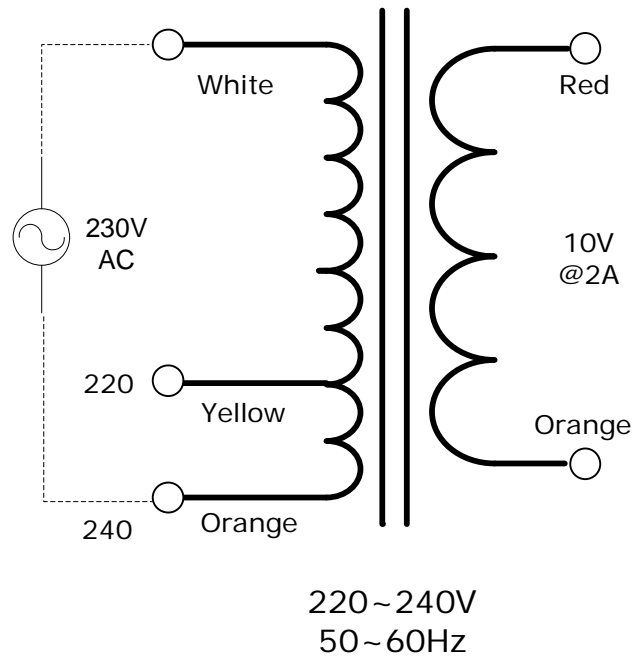
Size: 68x55x58mm + mounting
lugs

Weight: 0.758kg

Fixing: 2x4mm clearance holes
80mm centres

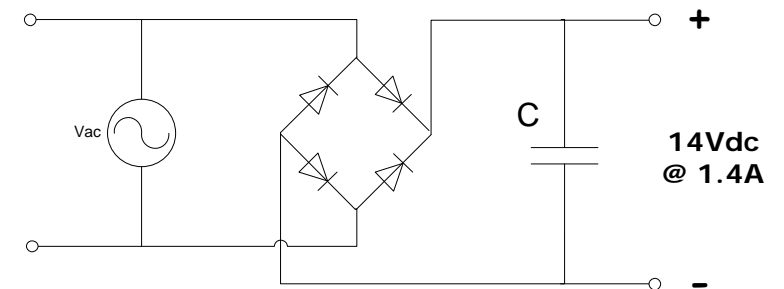
Condition: Used/refurbished - as
removed from operational Oki
printer equipment.

Comments:



NOTICE – the information on this page is not guaranteed for accuracy – CASA accepts no responsibility (neither expressed nor implied) for any errors or the consequence therefrom.

Optional Rectifier Assembly



Basic Un-Regulated DC PSU – Quick Calculator

$$C = (I \times 80,000) / V_{dc}$$
$$(1.4 \times 80,000) / 14 = \sim 8,000\mu F$$

C = Capacitor in microFarads

I = Current (output) in Amps

V_{dc} = Volts (output)

P = Power of load (or transformer) in Watts (VoltAmps)

V_{ac} = input Volts from transformer

V_{dc} = V_{ac} x 1.4 (using a full-bridge rectifier)

Two or more identical transformers may be series-parallel arranged for higher currents and/or voltages (phasing observed)

NOTE – these approximations exclude copper losses etc. in the transformer and external wiring