



12345-wizard.com

Brand: McCarron (VMI USA)

Model: M4773

OEM #: 2161 7683C
(Burroughs)

Input: 90~230Vac 50~60Hz
(tapped)

Output: 110V 4.5A rms
(nominal)

Power: 500VA (estimated)

Size: 162x150x105mm
(excludes feet – 125mm)

Weight: 9.26kg

Fixing: 4 x M6 holes @ 135 x
95mm centres (nominal)

Condition: as new refurbished
item typically as represented in
images.

Comments: may be used as a
110~230V or 230~110V step-up
or step-down transformer with
+/- 10V (nominal) tapping
adjustments. The primary
windings may be pre-terminated
(linked A~E) for 230V.

Mains Transformer

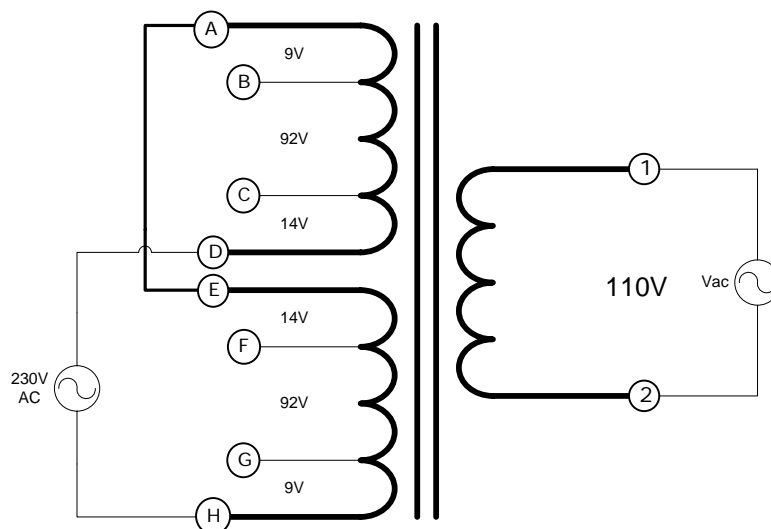
Type: 110V-500VA-DW-M4773



<http://www.casa.co.nz>

Edition: 24/07/2011

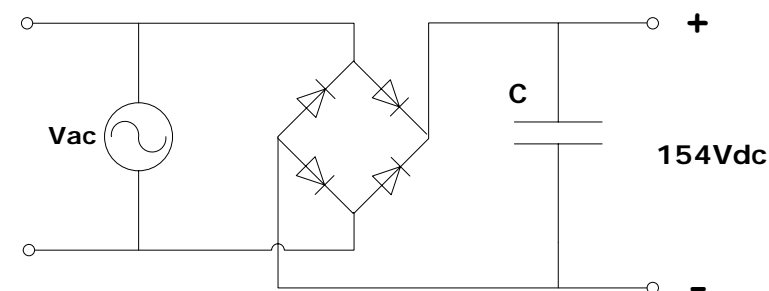
M-4773



Voltages shown above are open-
circuit (no-load) measurements.

NOTICE – the information on this page is not guaranteed for
accuracy – CASA accepts no responsibility (express or
implied) for any errors or the consequence therefrom.

Optional Rectifier Assembly



Basic Un-Regulated DC PSU – Quick Calculator

$$C = (I \times 80,000) / V_{dc}$$

$$(3.25 \times 80,000) / 154 = 1,688\mu F$$

C = Capacitor in microFarads

I = Current (output) in Amps

Vdc = Volts (output)

P = Power of load (or transformer) in Watts (VoltAmps)

Vac = input Volts from transformer

Vdc = Vac x 1.4 (using a full-bridge rectifier)

Two or more identical transformers may be series-parallel
arranged for higher currents and/or voltages (phasing
observed)

NOTE – these approximations exclude copper losses etc.
in the transformer and external wiring