

Mains Transformer



<http://www.casa.co.nz>

Edition: 29/07/2011



Not registered

Type: **115-600VA-DW-C14L9400-0190**

Brand: Koken Electric (Japan)

Model: C14L-9400-0190

OEM #: C14L-9400-0190

Input: 200V~230Vac 50~60Hz
(non-tapped)

Output: 110V~115 @ 4A

Power: 600VA (estimated)

Size: 150 x 135 mm x 135mm

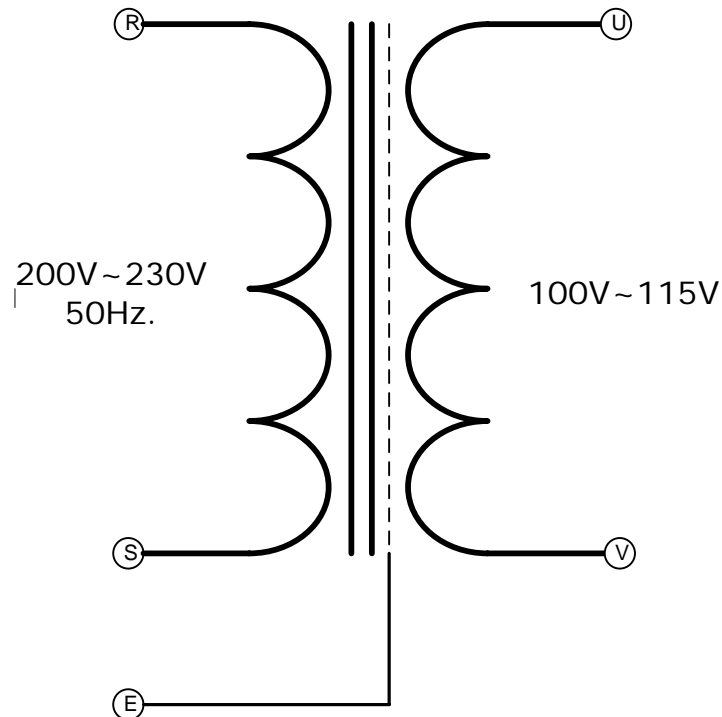
Weight: 11 kg

Fixing: 4 x M5 100mm x
100mm

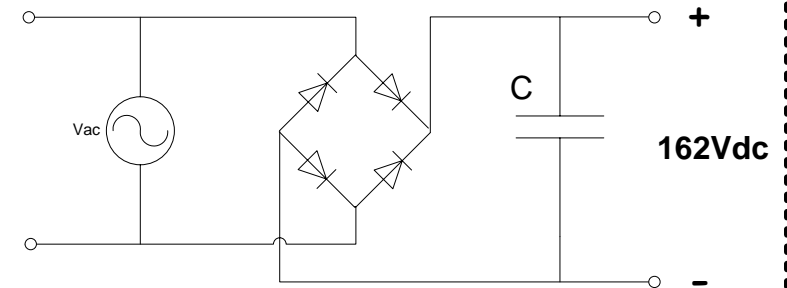
Condition: used/refurbished –
(as removed from operational
equipment) - as represented in
the images.

Comments: Inter-winding
screen. Primary tested up to 240
volts with magnetizing current
still not rising excessively.

C14L-9400-0190



Optional Rectifier Assembly



Basic Un-Regulated DC PSU – Quick Calculator

$$C = (I \times 80,000) / V_{dc}$$
$$(3.6 \times 80,000) / 162 = 1,800\mu F$$

C = Capacitor in microFarads
I = Current (output) in Amps
Vdc = Volts (output)

P = Power of load (or transformer) in Watts (VoltAmps)
Vac = input Volts from transformer
Vdc = Vac x 1.4 (using a full-bridge rectifier)

Two or more identical transformers may be series-
parallel arranged for higher currents and/or voltages
(phasing observed)

NOTE – these approximations exclude copper losses etc.
in the transformer and external wiring

NOTICE – the information on this page is not guaranteed
for accuracy – CASA accepts no responsibility (expressed
or implied) for any errors or the consequence therefrom.