

Mains Transformer



<http://www.casa.co.nz>

Edition: 29/05/2012

Type: **12V-200VA-DW-AES-1**

Stock #



Not registered

General Data

Model: AES-1

Brand: ATCO (NZ)

Input: 240Vac 50Hz (not tapped)

Output: 12V @ 16.6A

Power: 200VA

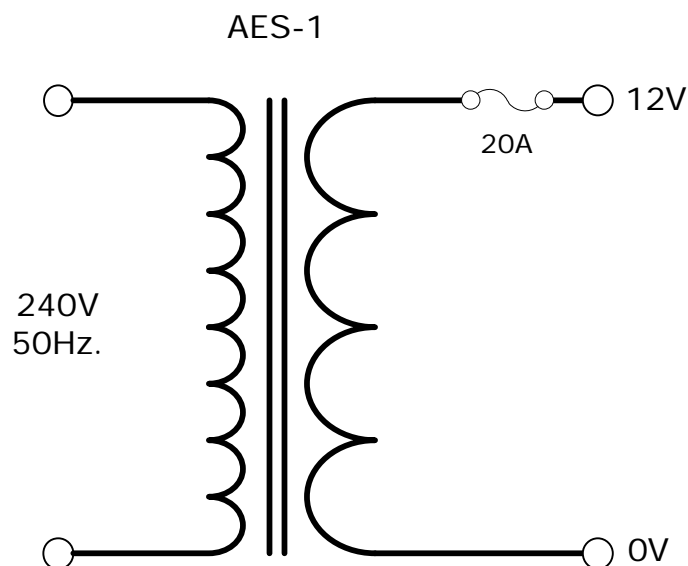
Size: 170x105x100mm (plus lugs)

Weight: 5kg

Fixing: 2 x 5mm slots @ 190mm centres (nominal)

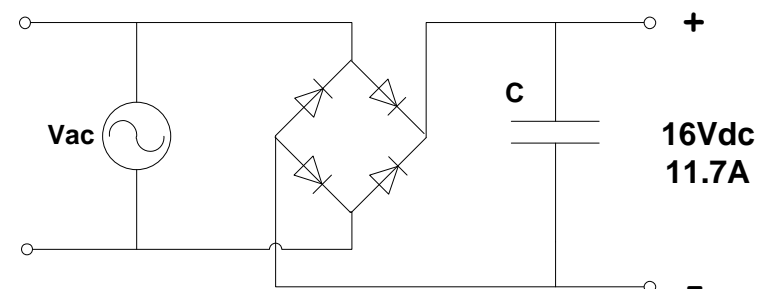
Condition: Refurbished

Comments: Secondary protected by 20A rewirable fuse. Designed for halogen lighting.



NOTICE – the information on this page is not guaranteed for accuracy – CASA accepts no responsibility (neither expressed nor implied) for any errors or the consequence therefrom.

Optional Rectifier Assembly



Basic Un-Regulated DC PSU – Quick Calculator

$$C = (I \times 80,000) / V_{dc}$$
$$(11.7 \times 80,000) / 16 = 58.700\mu F$$

C = Capacitor in microFarads

I = Current (output) in Amps

V_{dc} = Volts (output)

P = Power of load (or transformer) in Watts (VoltAmps)

V_{ac} = input Volts from transformer

V_{dc} = V_{ac} x 1.4 (using a full-bridge rectifier)

Two or more identical transformers may be series-parallel arranged for higher currents and/or voltages (phasing observed)

NOTE – these approximations exclude copper losses etc. in the transformer and external wiring