

Mains Transformer



<http://www.casa.co.nz>

Edition: 7/09/2011

Type: **16V-430mA-7VA-DW-12666-1**

Stock #



Not registered

General Data

Brand: C&T (Aussie?)

Model: 12666-1
(240FV16)

Input: 240Vac 50Hz (not tapped)

Output: 16V @ 0.43A

Power: 7VA (estimated)

Size: 53x38x44mm (plus feet)

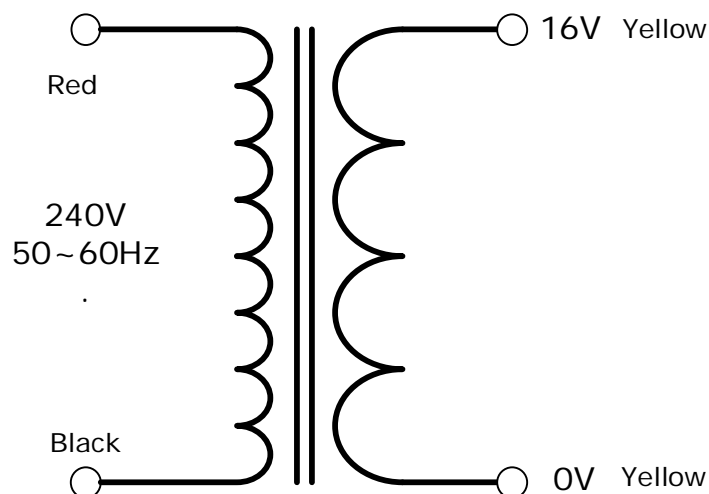
Weight: 0.395kg

Fixing: 2 x 4mm holes @ 70mm centres (nominal)

Condition: NEW#

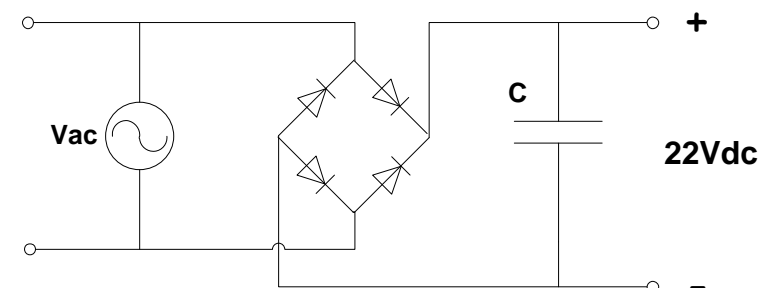
Comments:

C&T-12666-1
240FV16



NOTICE – the information on this page is not guaranteed for accuracy – CASA accepts no responsibility (expressed or implied) for any errors or the consequence therefrom.

Optional Rectifier Assembly



Basic Un-Regulated DC PSU – Quick Calculator

$$C = (I \times 80,000) / V_{dc}$$
$$(0.5 \times 80,000) / 22 = 1800\mu F$$

C = Capacitor in microFarads
I = Current (output) in Amps
Vdc = Volts (output)

P = Power of load (or transformer) in Watts (VoltAmps)

Vac = input Volts from transformer

Vdc = Vac x 1.4 (using a full-bridge rectifier)

Two or more identical transformers may be series-parallel arranged for higher currents and/or voltages (phasing observed)

NOTE – these approximations exclude copper losses etc. in the transformer and external wiring