

Mains Transformer



<http://www.casa.co.nz>

Edition: 29/06/2012

Type: **18V-108VA-DW-BX11**

Not registered

General Data

Brand: Teleco (NZ)

Model: BX11

Input: 230Vac 50~60Hz (non-tapped)

Output: 18V @ 6A

Power: 108VA (calculated)

Size: 115x108x75mm

Weight: 3.10kg

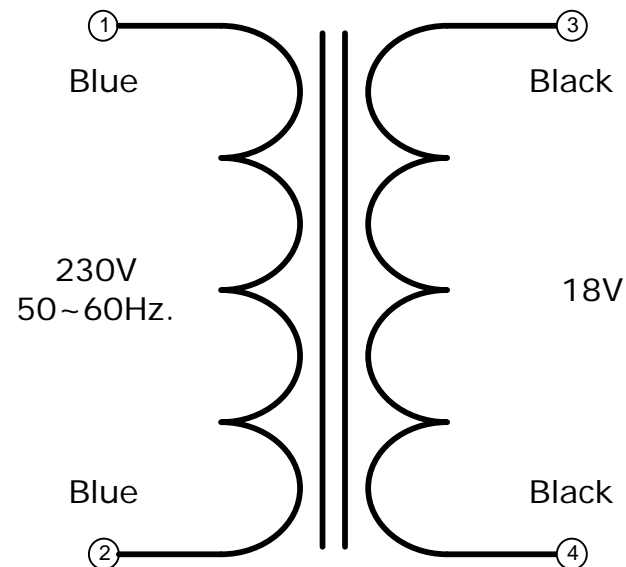
Fixing: 4 x M4 holes @ 58 x 48mm centres (nominal)

Condition: Used/refurbished typically as represented in the images

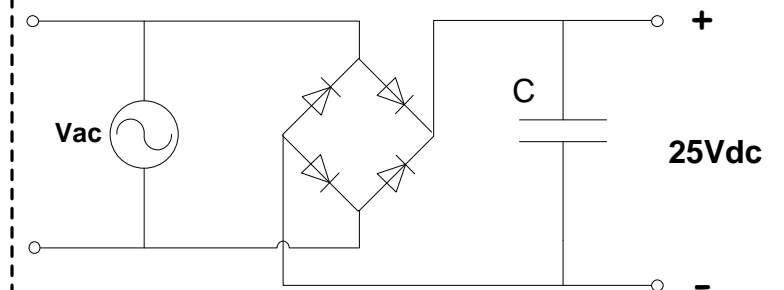
Comments:

NOTICE – the information on this page is not guaranteed for accuracy – CASA accepts no responsibility (neither expressed nor implied) for any errors or the consequence therefrom.

BX11



Optional Rectifier Assembly



Basic Un-Regulated DC PSU – Quick Calculator

$$C = (I \times 80,000) / V_{dc}$$
$$(4.3 \times 80,000) / 32 = 13,760\mu F$$

C = Capacitor in microFarads

I = Current (output) in Amps

V_{dc} = Volts (output)

P = Power of load (or transformer) in Watts (VoltAmps)

V_{ac} = input Volts from transformer

V_{dc} = V_{ac} x 1.4 (using a full-bridge rectifier)

Two or more identical transformers may be series-parallel arranged for higher currents and/or voltages (phasing observed)

NOTE – these approximations exclude copper losses etc. in the transformer and external wiring