

# Mains Transformer



<http://www.casa.co.nz>

Edition: 29/06/2012

Type: **19V-110VA-DW-5241**

Stock #  
145



## General Data

**Brand:** NA (NZ?)

**Model:** 5241

**Input:** 230Vac 50Hz (not tapped)

**Output:** 19V @ 5.8A

**Power:** 110VA (estimated)

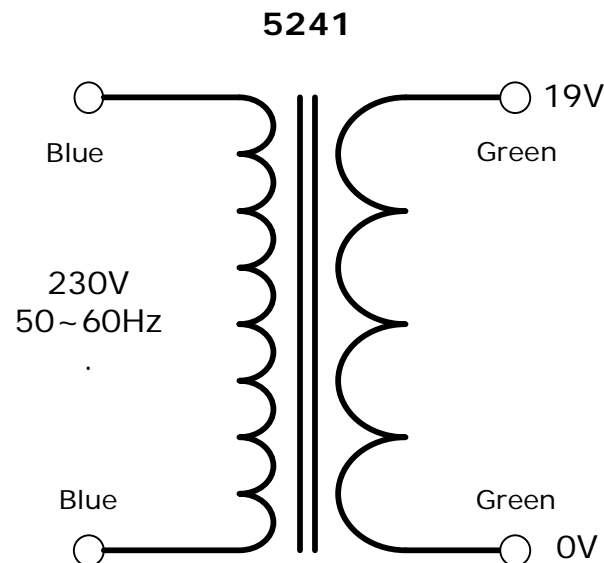
**Size:** 100x90x117mm (plus feet)

**Weight:** 3.1kg

**Fixing:** 4 x 5mm holes @ 72 x 58mm centres (nominal)

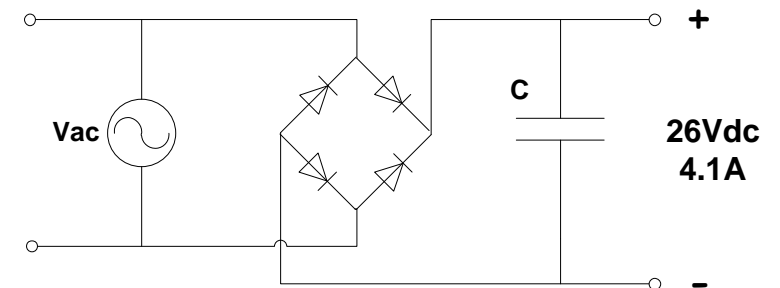
**Condition:** NEW#

**Comments:**



**NOTICE** – the information on this page is not guaranteed for accuracy – CASA accepts no responsibility (neither expressed nor implied) for any errors or the consequence therefrom.

## Optional Rectifier Assembly



## Basic Un-Regulated DC PSU – Quick Calculator

$$C = (I \times 80,000) / V_{dc}$$
$$(4.1 \times 80,000) / 26 = 12,600\mu F$$

C = Capacitor in microFarads  
I = Current (output) in Amps  
Vdc = Volts (output)

P = Power of load (or transformer) in Watts (VoltAmps)  
Vac = input Volts from transformer  
Vdc = Vac x 1.4 (using a full-bridge rectifier)

Two or more identical transformers may be series-parallel arranged for higher currents and/or voltages (phasing observed)

**NOTE** – these approximations exclude copper losses etc. in the transformer and external wiring