

Mains Transformer – Low Profile



<http://www.casa.co.nz>

Edition: 19/07/2011

Type: **21V-40W-700-041-004C**



Brand: n/a (Aussie/USA?)

Model: 700-041-004C

Input: 230Vac 50Hz (115V tapped)

Output: 21V centre-tapped @ ___A

Power: 40 VA (estimated)

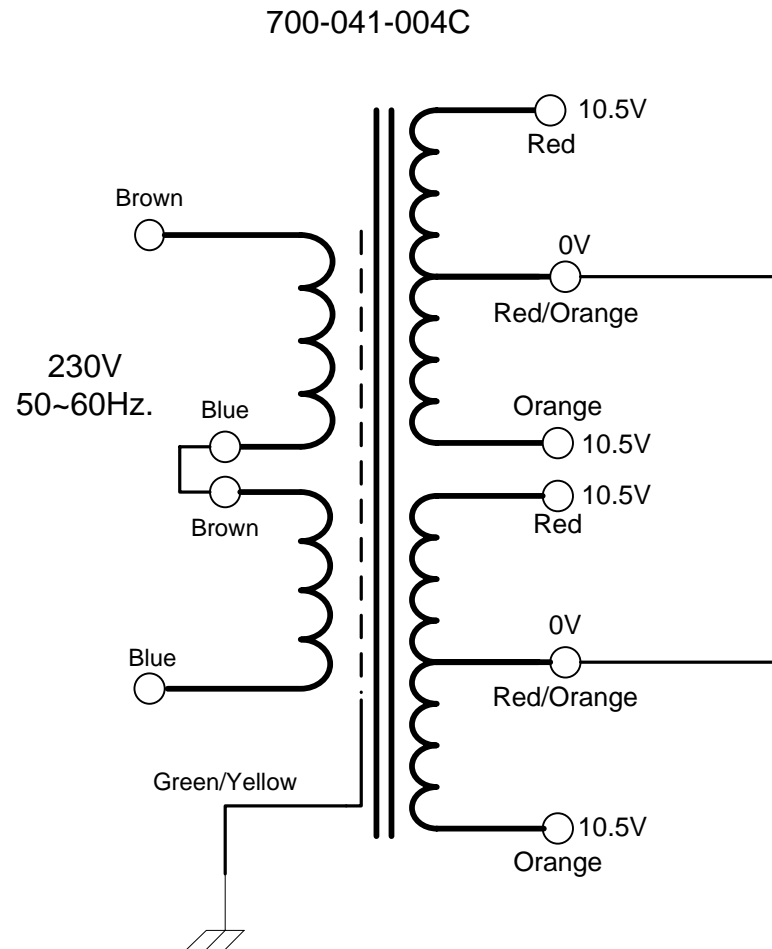
Size: 96x76x35mm (nominal)

Weight: 0.81kg

Fixing: 4 x 5mm holes @ 82.5 x 44.5mm centres (nominal)

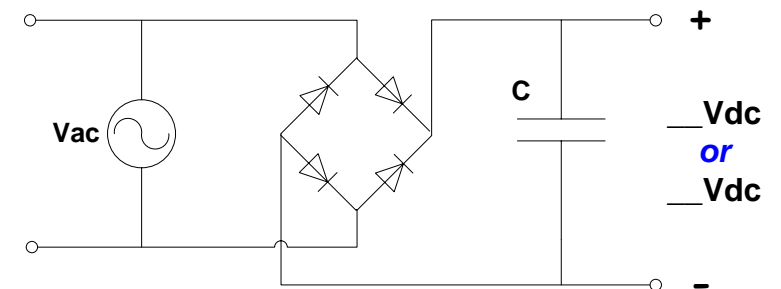
Condition: as-new (removed from decommissioned telecommunications equipments)

Comments: low-profile - may have optional over-cover and self-tapping fixing screws – 2nd secondary winding un-used in original equipment.



NOTICE – the information on this page is not guaranteed for accuracy – CASA accepts no responsibility (express or implied) for any errors or the consequence therefrom.

Optional Rectifier Assembly



Basic Un-Regulated DC PSU – Quick Calculator

$$C = (I \times 80,000) / V_{dc}$$
$$(_ \times 80,000) / _ = _,000\mu F$$

or $(_ \times 80,000) / _ = _,000\mu F$

C = Capacitor in microFarads
I = Current (output) in Amps
V_{dc} = Volts (output)

P = Power of load (or transformer) in Watts (VoltAmps)

V_{ac} = input Volts from transformer

V_{dc} = V_{ac} x 1.4 (using a full-bridge rectifier)

Two or more identical transformers may be series-parallel arranged for higher currents and/or voltages (phasing observed)

NOTE – these approximations exclude copper losses etc. in the transformer and external wiring