

Mains Transformer – Low Profile



<http://www.casa.co.nz>

Edition: 15/08/2011

Type: **21V-CT-40VA-DW-700041004C**

Stock #:

700-041-004C



General Data

Brand: n/a (Aussie/USA?)

Model: 700-041-004C

Input: 230Vac 50Hz (115V tapped)

Output: 21V centre-tapped @ 2A or 10.5V @ 4A

Power: 40 VA (estimated)

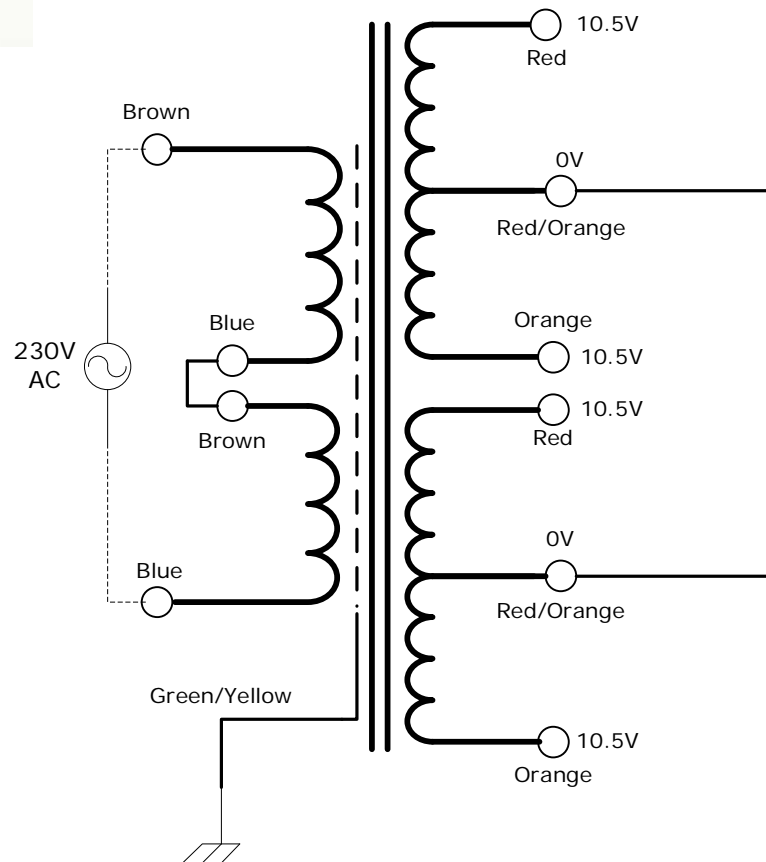
Size: 96x76x35mm (nominal)

Weight: 0.81kg

Fixing: 4 x 5mm holes @ 82.5 x 44.5mm centres (nominal)

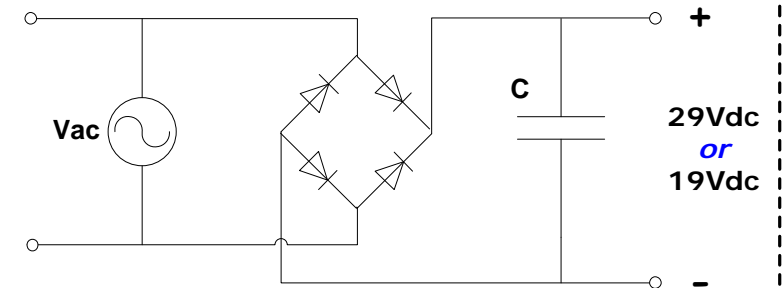
Condition: as-new (removed from decommissioned telecommunications equipments)

Comments: low-profile – may be pre-wired for parallel 10V or series arranged for 21V - may have optional over-cover and self-tapping fixing screws – 2nd secondary winding un-used in original equipment.



NOTICE – the information on this page is not guaranteed for accuracy – CASA accepts no responsibility (neither expressed nor implied) for any errors or the consequence therefrom.

Optional Rectifier Assembly



Basic Un-Regulated DC PSU – Quick Calculator

$$C = (I \times 80,000) / V_{dc}$$
$$(2 \times 80,000) / 29 = 5,500\mu F$$

$$(4 \times 80,000) / 19 = 16,800\mu F$$

C = Capacitor in microFarads

I = Current (output) in Amps

V_{dc} = Volts (output)

P = Power of load (or transformer) in Watts (VoltAmps)

V_{ac} = input Volts from transformer

V_{dc} = V_{ac} x 1.4 (using a full-bridge rectifier)

Two or more identical transformers may be series-parallel arranged for higher currents and/or voltages (phasing observed)

NOTE – these approximations exclude copper losses etc. in the transformer and external wiring