

Mains Transformer



<http://www.casa.co.nz>

Edition: 05/08/2011

Type: **230V~115V-1KVA-DW**

Stock#: _____



12345-anzard.com

Brand: NA
Type: 230V~115V-1KVA-DW
Model:
OEM#:

Input: 230Vac 50~60Hz

Output: 115V @ 8.7 Amps
Power: 1kVA

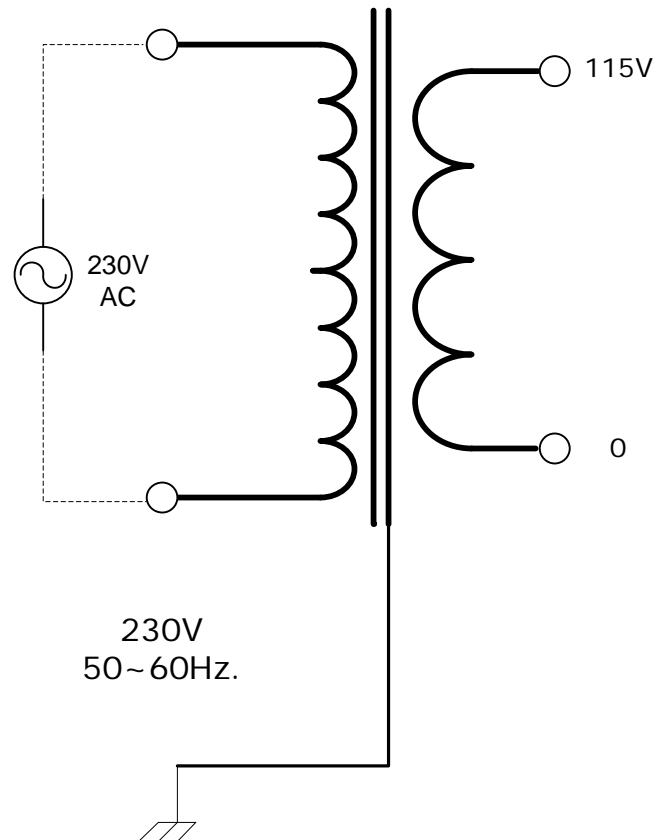
Size: 180x145x255mm

Weight: 15.5kg

Fixing: 4x7mm clearance holes
154x100mm centres

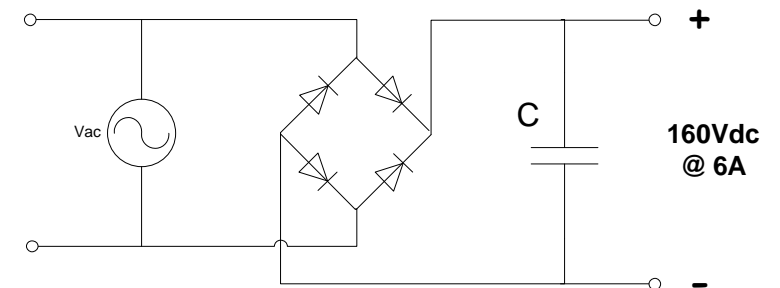
Condition: used/refurbished - as removed from operational computer equipment.

Comments:



NOTICE – the information on this page is not guaranteed for accuracy – CASA accepts no responsibility (expressed or implied) for any errors or the consequence therefrom.

Optional Rectifier Assembly



Basic Un-Regulated DC PSU – Quick Calculator

$$C = (I \times 80,000) / V_{dc}$$
$$(4 \times 80,000) / 53 = \sim 3,000\mu F$$

C = Capacitor in microFarads
I = Current (output) in Amps
Vdc = Volts (output)

P = Power of load (or transformer) in Watts (VoltAmps)
Vac = input Volts from transformer
Vdc = Vac x 1.4 (using a full-bridge rectifier)

Two or more identical transformers may be series-parallel arranged for higher currents and/or voltages (phasing observed)

NOTE – these approximations exclude copper losses etc. in the transformer and external wiring