



Not registered

General Data

Brand: NuvoTem (Ireland)

Type #: 7378-P1S

Model:
OEM #: 80049536 20/E6 (ICL DSR20 Terminals (UK))

Input: 230Vac 50~60Hz (non-tapped)

Output: 24 @ 4A

Power: 100VA (estimated)

Size: 95 dia x 37 mm (thick)

Weight: 0.98 kg

Fixing: 1 x M6 tapped thru-hole (brass-bushing)

Condition: used/refurbished – as removed from operational computer systems

Comments: optional mu-metal screening can assembly may be available – some leads may be fitted with QC connections etc.

Mains Transformer - Toroidal

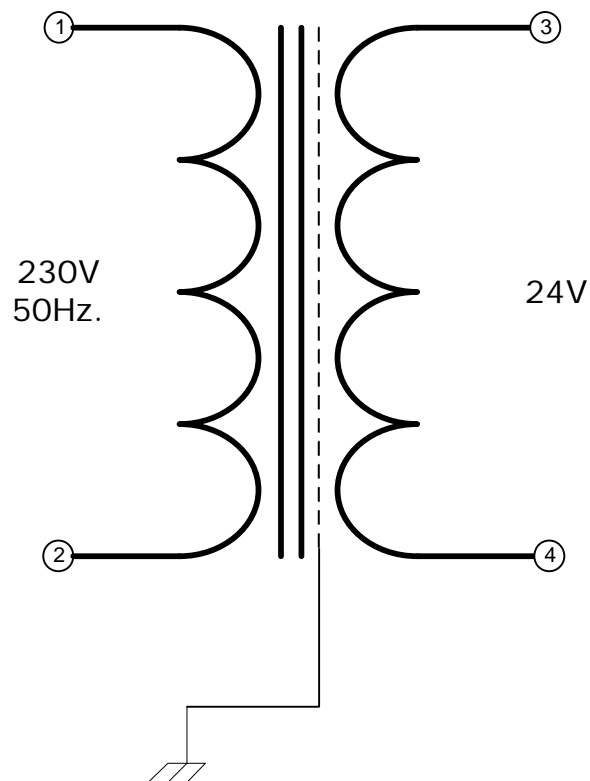
Type: **24V-100VA-DW-7378-P1S**



<http://www.casa.co.nz>

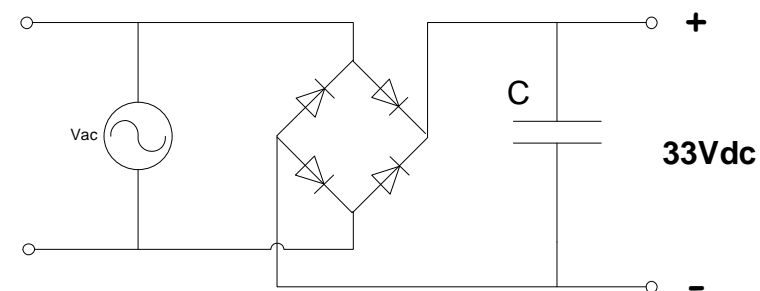
Edition: 03/07/2012

7378-P1S



NOTICE – the information on this page is not guaranteed for accuracy – CASA accepts no responsibility (neither expressed nor implied) for any errors or the consequence therefrom.

Optional Rectifier Assembly



Basic Un-Regulated DC PSU – Quick Calculator

$$C = (I \times 80,000) / V_{dc}$$

$$(4 \times 80,000) / 33 = 10,000\mu F$$

C = Capacitor in microFarads
I = Current (output) in Amps
V_{dc} = Volts (output)

P = Power of load (or transformer) in Watts (VoltAmps)
V_{ac} = input Volts from transformer
V_{dc} = V_{ac} x 1.4 (using a full-bridge rectifier)

Two or more identical transformers may be series-parallel arranged for higher currents and/or voltages (phasing observed)

NOTE – these approximations exclude copper losses etc. in the transformer and external wiring