

Mains Transformer



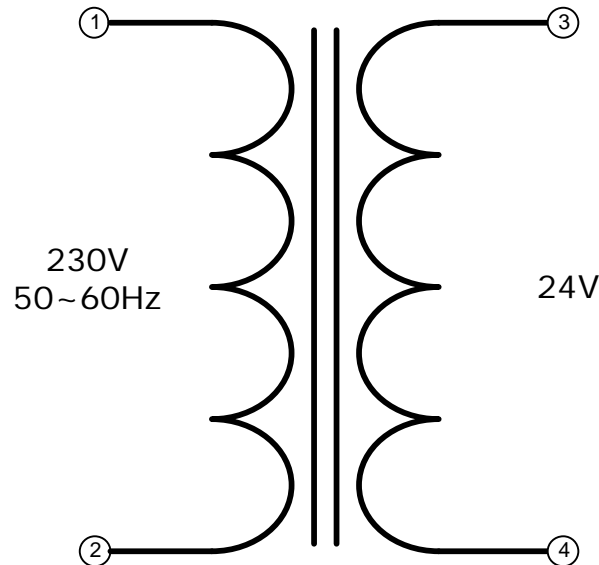
<http://www.casa.co.nz>

Edition: 03/07/2012

Type: **24V-200VA-DW-21621362**

Stock #:

2162-1362



NOTICE – the information on this page is not guaranteed for accuracy – CASA accepts no responsibility (neither expressed nor implied) for any errors or the consequence therefrom.

General Data

Brand: McCarron (USA)

Model: 2162-1362

Input: 230Vac 50~60Hz
(tapped)

Output: 24V @ 8A

Power: 200VA (calculated)

Size: 106x88x88mm

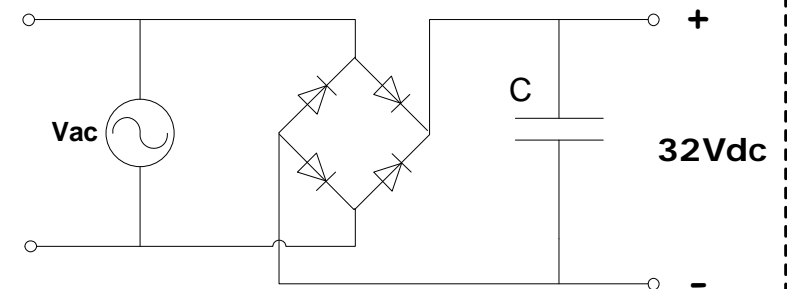
Weight: 3.70kg

Fixing: 4 x M4 holes @ 75 x 70mm centres (nominal)

Condition: Used/refurbished typically as represented in the images

Comments: VDR (275LA) is installed across the primary

Optional Rectifier Assembly



Basic Un-Regulated DC PSU – Quick Calculator

$$C = (I \times 80,000) / V_{dc}$$
$$(8 \times 80,000) / 32 = 20,000\mu F$$

C = Capacitor in microFarads
I = Current (output) in Amps
Vdc = Volts (output)

P = Power of load (or transformer) in Watts (VoltAmps)
Vac = input Volts from transformer
Vdc = Vac x 1.4 (using a full-bridge rectifier)

Two or more identical transformers may be series-parallel arranged for higher currents and/or voltages (phasing observed)

NOTE – these approximations exclude copper losses etc. in the transformer and external wiring