

Mains Transformer



<http://www.casa.co.nz>

Edition: 29/06/2012

Type: **24V-20V-16V-16A6-DW-BV74**

General Data

Brand: Transcor

Model: BV74

Input: 230Vac 50Hz (not tapped)

Output: 24-20-16-0V @ 16.6A

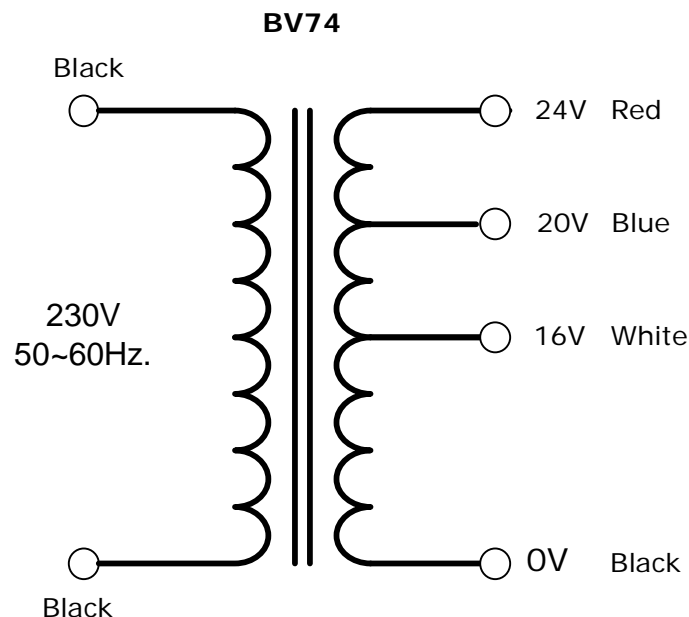
Power: 400VA

Size: 134 x 132 x 136mm

Weight: 7.53kg

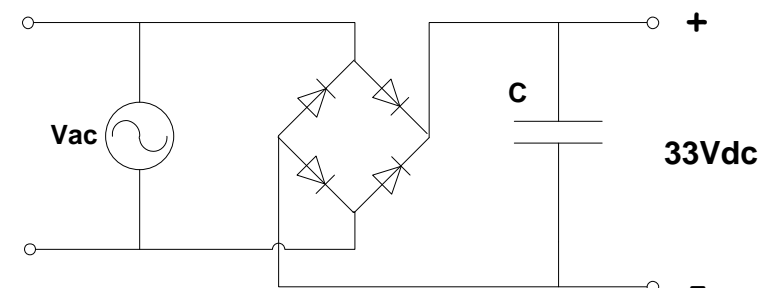
Fixing: 4 x 5mm holes @ 80 x 65mm centres (nominal)

Comments: Inter-winding electrostatic screen.



NOTICE – the information on this page is not guaranteed for accuracy – CASA accepts no responsibility (neither expressed nor implied) for any errors or the consequence therefrom.

Optional Rectifier Assembly



Basic Un-Regulated DC PSU – Quick Calculator

$$C = (I \times 80,000) / V_{dc}$$
$$(12 \times 80,000) / 33 = 29,000\mu F$$

C = Capacitor in microFarads
I = Current (output) in Amps
V_{dc} = Volts (output)

P = Power of load (or transformer) in Watts (VoltAmps)
Vac = input Volts from transformer
V_{dc} = Vac x 1.4 (using a full-bridge rectifier)

Two or more identical transformers may be series-parallel arranged for higher currents and/or voltages (phasing observed)

NOTE – these approximations exclude copper losses etc. in the transformer and external wiring