

Mains Transformer - Toroidal



<http://www.casa.co.nz>

Edition: 03/07/2012

Type: **24V-30VA-DW-DT3228-11**



General Data

Brand: IDATA (EEC?)

Type #: DT3228-11

Model:

OEM #: 70-004 (?)

Input: 230Vac 50Hz (non-tapped)

Output: 24V @ 1.25A

Power: 30VA (verified)

Size: 70 dia x 44 mm (thick including packing washers)

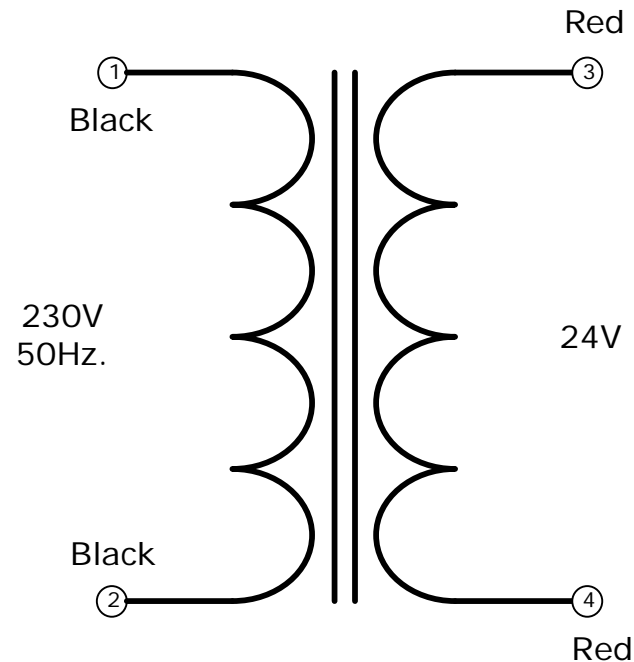
Weight: 0.56 kg

Fixing: core thru-hole (with packing washers)

Condition: refurbished (removed from de-commissioned computer equipment)

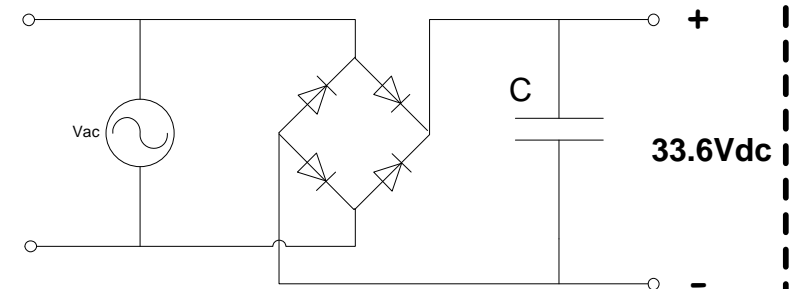
Comments: very nice tidy transformer with optional 3/16" QC tags and mains filter capacitor

DT3228-11



NOTICE – the information on this page is not guaranteed for accuracy – CASA accepts no responsibility (neither expressed nor implied) for any errors or the consequence therefrom.

Optional Rectifier Assembly



Basic Un-Regulated DC PSU – Quick Calculator

$$C = (I \times 80,000) / V_{dc}$$
$$(1.25 \times 80,000) / 33.6 = 2,976\mu F$$

C = Capacitor in microFarads
I = Current (output) in Amps
Vdc = Volts (output)

P = Power of load (or transformer) in Watts (VoltAmps)
Vac = input Volts from transformer
Vdc = Vac x 1.4 (using a full-bridge rectifier)

Two or more identical transformers may be series-parallel arranged for higher currents and/or voltages (phasing observed)

NOTE – these approximations exclude copper losses etc. in the transformer and external wiring