

Mains Transformer



<http://www.casa.co.nz>

Edition: 03/07/2012

Type: **24V-40VA-DW-SR/T-2700/4**



12345-wizard.com

General Data

Brand: Marconi (England)

Model: SR/T 2700/4

Input: 250~100Vac 50~60Hz
(split wound)

Output: 24V @ 1.6A (estimated)

Power: 40VA (estimated)

Size: 70 x 58 x 90 mm

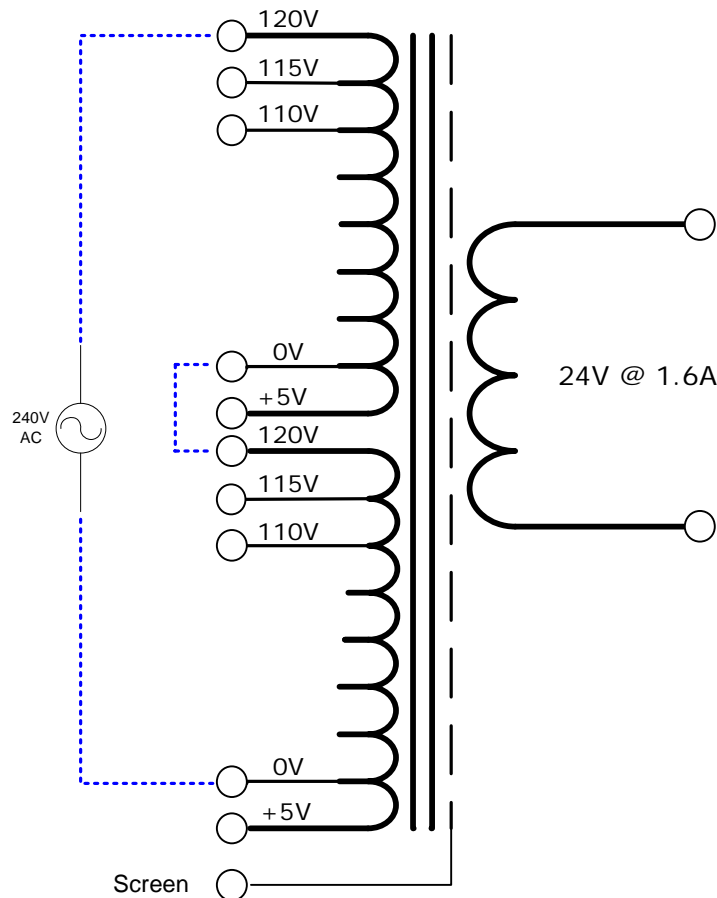
Weight: 1.1kg

Fixing: 4 x M3 @ 53 x 44 matrix

Condition: Used, as recovered
from telecommunications
equipment.

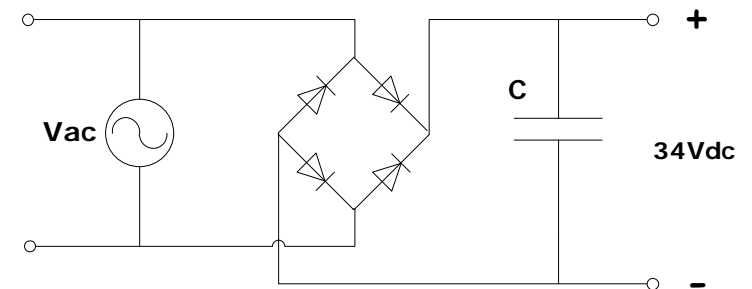
Comments: primary windings
may be connected in series for
200 to 250 Volt input.

SR/T 2700/4



NOTICE – the information on this page is not guaranteed for accuracy – CASA accepts no responsibility (neither expressed nor implied) for any errors or the consequence therefrom.

Optional Rectifier Assembly



Basic Un-Regulated DC PSU – Quick Calculator

$$C = (I \times 80,000) / V_{dc}$$
$$(1.1 \times 80,000) / 34 = 2,700\mu F$$

C = Capacitor in microFarads
I = Current (output) in Amps
Vdc = Volts (output)

P = Power of load (or transformer) in Watts (VoltAmps)
Vac = input Volts from transformer
Vdc = Vac x 1.4 (using a full-bridge rectifier)

Two or more identical transformers may be series-parallel arranged for higher currents and/or voltages (phasing observed)

NOTE – these approximations exclude copper losses etc. in the transformer and external wiring