

Mains Transformer



<http://www.casa.co.nz>

Edition: 03/07/2012

Type: **24V~12V-200VA-DW-P6379**



Not registered

General Data

Brand: Stancor (USA)

Model: P-6379 (xxx)

Input: 230~115Vac 50~60Hz
(tapped)

Output: 24 @ 8A or 12 @ 16A

Power: 200VA (calculated)

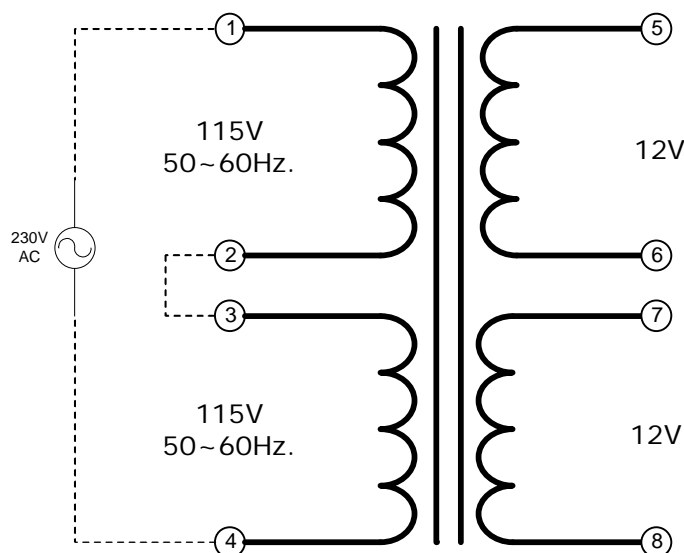
Size: 106x88x88mm

Weight: 3.48kg

Fixing: 4 x M5 holes @ 75 x 70mm centres (nominal)

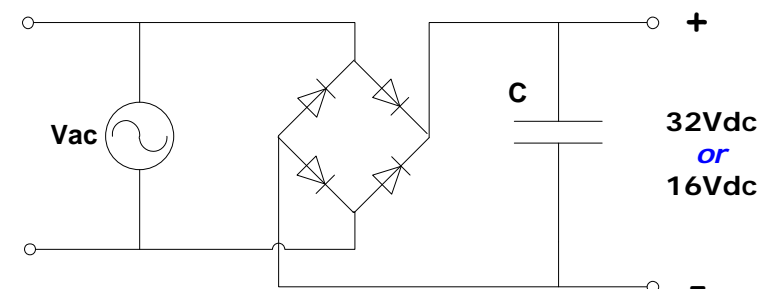
Comments:

P-6379



NOTICE – the information on this page is not guaranteed for accuracy – CASA accepts no responsibility (neither expressed nor implied) for any errors or the consequence therefrom.

Optional Rectifier Assembly



Basic Un-Regulated DC PSU – Quick Calculator

$$C = (I \times 80,000) / V_{dc}$$
$$(8 \times 80,000) / 32 = 20,000\mu F$$

or $(16 \times 80,000) / 16 = 80,000\mu F$

C = Capacitor in microFarads
I = Current (output) in Amps
V_{dc} = Volts (output)

P = Power of load (or transformer) in Watts (VoltAmps)
Vac = input Volts from transformer
V_{dc} = Vac x 1.4 (using a full-bridge rectifier)

Two or more identical transformers may be series-parallel arranged for higher currents and/or voltages (phasing observed)

NOTE – these approximations exclude copper losses etc. in the transformer and external wiring