

Mains Transformer - Toroidal



<http://www.casa.co.nz>

Edition: 03/07/2012

Type: **25V-150VA-DW-80347528**

Stock #



Not registered

General Data

Brand: N/A (UK?)

Type #: 40/4531

Model:
OEM #: 80347528 (ICL? UK))

Input: 230Vac 50~60Hz (115V tapped)

Output: 25V @ 6A

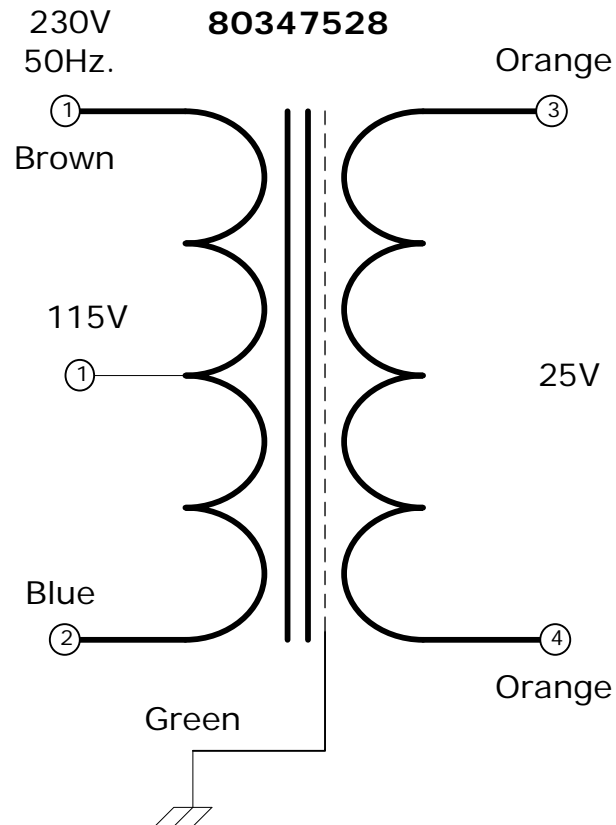
Power: 150VA (estimated)

Size: 100 dia x 48 mm (thick)

Weight: 1.3 kg

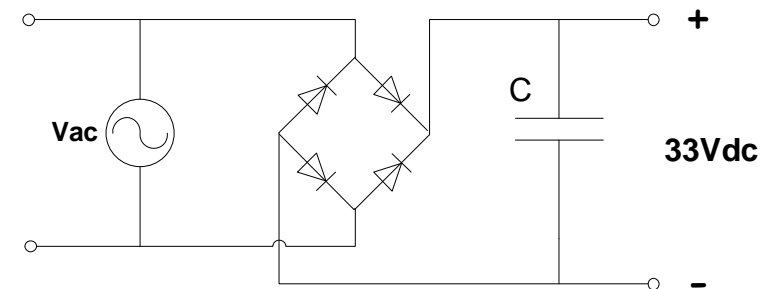
Fixing: core thru-hole (open)

Comments: Unless pre-housed, toroidal transformers should be clamped to chassis with a 1~3mm thick rubber/neoprene washer on each side.



NOTICE – the information on this page is not guaranteed for accuracy – CASA accepts no responsibility (neither expressed nor implied) for any errors or the consequence there-from.

Optional Rectifier Assembly



Basic Un-Regulated DC PSU – Quick Calculator

$$C = (I \times 80,000) / V_{dc}$$
$$(6 \times 80,000) / 33 = 15,000\mu F \text{ (15,454}\mu F\text{)}$$

C = Capacitor in microFarads
I = Current (output) in Amps
V_{dc} = Volts (output)

P = Power of load (or transformer) in Watts (VoltAmps)
Vac = input Volts from transformer
V_{dc} = Vac x 1.4 (using a full-bridge rectifier)

Two or more identical transformers may be series-parallel arranged for higher currents and/or voltages (phasing observed)

NOTE – these approximations exclude copper losses etc. in the transformer and external wiring