

Mains Transformer



Type: **25V-200VA-DW-2092353**

<http://www.casa.co.nz>

Edition: 03/07/2012



12345-wizard.com

Stock #
253

General Data

Brand: NA (USA)

Model: 2092-353 (IBM)

OEM: 2092 353

Input: 200~230Vac 50~60Hz
(tapped)

Output: 25V @ ~8 Amps
(Open circuit)

Power: 200VA (estimated)

Size: 130x100x132mm

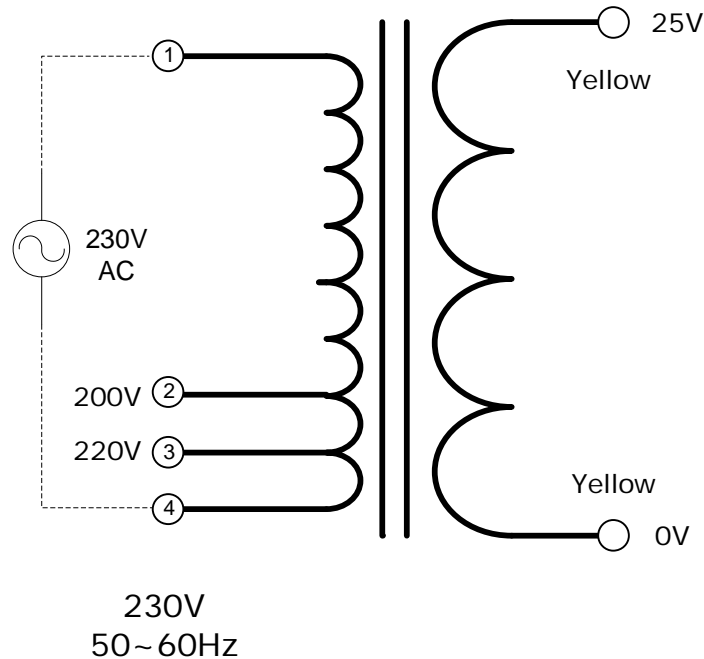
Weight: 4.2kg

Fixing: 4x6.5mm clearance holes
87x85mm centres

Condition: used/refurbished - as
removed from operational
computer equipment.

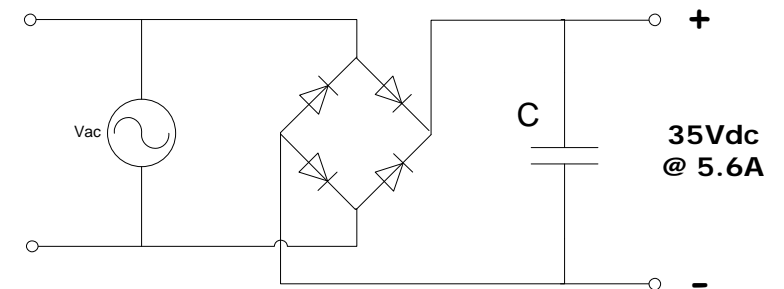
Comments:

2092-353



NOTICE – the information on this page is not guaranteed for accuracy – CASA accepts no responsibility (neither expressed nor implied) for any errors or the consequence therefrom.

Optional Rectifier Assembly



Basic Un-Regulated DC PSU – Quick Calculator

$$C = (I \times 80,000) / V_{dc}$$
$$(5.6 \times 80,000) / 35 = \sim 13,000\mu F$$

C = Capacitor in microFarads
I = Current (output) in Amps
Vdc = Volts (output)

P = Power of load (or transformer) in Watts (VoltAmps)
Vac = input Volts from transformer
Vdc = Vac x 1.4 (using a full-bridge rectifier)

Two or more identical transformers may be series-parallel arranged for higher currents and/or voltages (phasing observed)

NOTE – these approximations exclude copper losses etc. in the transformer and external wiring