

Mains Transformer



<http://www.casa.co.nz>

Edition: 23/05/2012

Type: **28V-18VA-DW-MH3-0012**

Stock #



Not registered

General Data

Brand: Canon (Japan)

Model: MH3-0012

OEM: ETP57Q12E

Input: 220~240Vac 50Hz
(tapped)

Output: 28 + 26 + 20V @ 0.6A

Power: 18VA (estimated)

Size: 59 x 49 x 50mm (plus
feet)

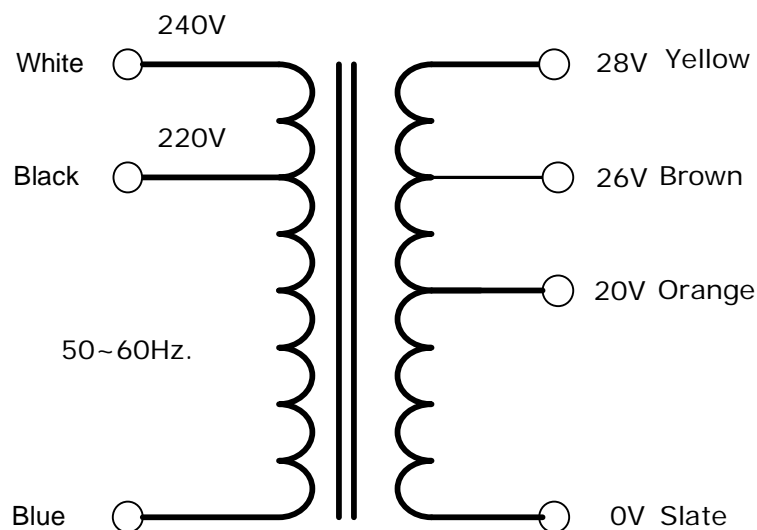
Weight: 0.535kg

Fixing: 2 x 4mm slots @ 70mm
centres (nominal)

Condition: Used, (refurbished)
as removed from
decommissioned printers

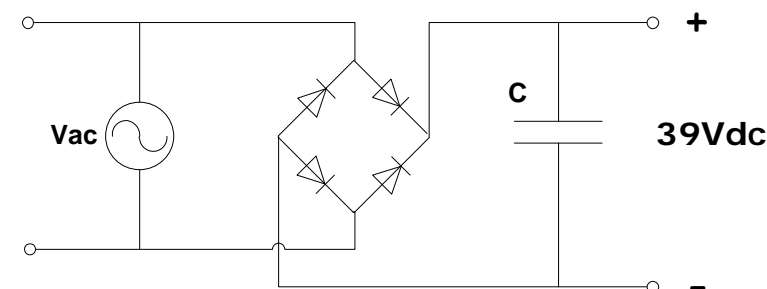
Comments:

MH3-0012



NOTICE – the information on this page is not guaranteed for accuracy – CASA accepts no responsibility (neither expressed nor implied) for any errors or the consequence therefrom.

Optional Rectifier Assembly



Basic Un-Regulated DC PSU – Quick Calculator

$$C = (I \times 80,000) / V_{dc}$$
$$(0.42 \times 80,000) / 39 = 870\mu F$$

C = Capacitor in microFarads
I = Current (output) in Amps
Vdc = Volts (output)

P = Power of load (or transformer) in Watts (VoltAmps)
Vac = input Volts from transformer
Vdc = Vac x 1.4 (using a full-bridge rectifier)

Two or more identical transformers may be series-parallel arranged for higher currents and/or voltages (phasing observed)

NOTE – these approximations exclude copper losses etc. in the transformer and external wiring