

Mains Transformer



<http://www.casa.co.nz>

Edition: 03/07/2012

Type: **28V-CT-17VA-DW-R140**



Stock #

Not registered

General Data

Brand: ETE (NZ)

Model: R140

Input: 240Vac 50Hz (not tapped)

Output: 14-0-14V @ 1A

Power: 17VA (labelled)

Size: 60x50x45mm (plus feet)

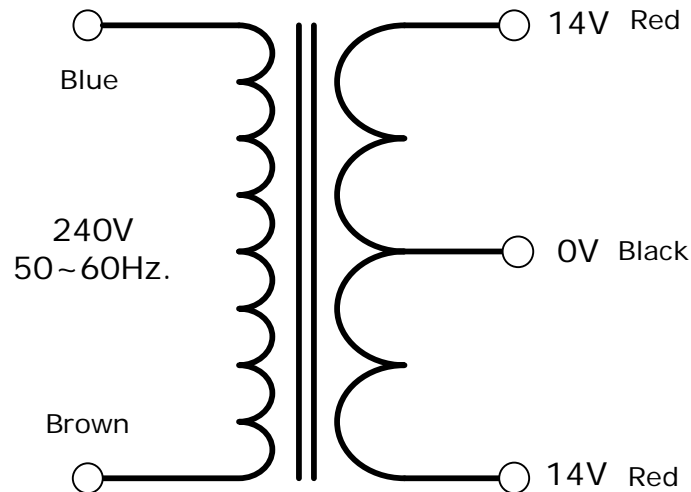
Weight: 0.47kg

Fixing: 2 x 4mm holes @ 73mm centres (nominal)

Condition: NEW

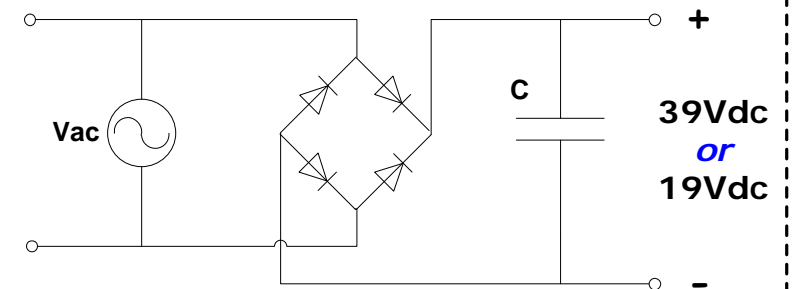
Comments:

R140



NOTICE – the information on this page is not guaranteed for accuracy – CASA accepts no responsibility (neither expressed nor implied) for any errors or the consequence therefrom.

Optional Rectifier Assembly



Basic Un-Regulated DC PSU – Quick Calculator

$$C = (I \times 80,000) / V_{dc}$$
$$(1 \times 80,000) / 39 = 2,000\mu F$$

or

$$(1 \times 80,000) / 19 = 4,000\mu F$$

C = Capacitor in microFarads

I = Current (output) in Amps

V_{dc} = Volts (output)

P = Power of load (or transformer) in Watts (VoltAmps)

V_{ac} = input Volts from transformer

V_{dc} = V_{ac} x 1.4 (using a full-bridge rectifier)

Two or more identical transformers may be series-parallel arranged for higher currents and/or voltages (phasing observed)

NOTE – these approximations exclude copper losses etc. in the transformer and external wiring