

Mains Transformer



<http://www.casa.co.nz>

Edition: 03/07/2012

Type: **28V~21V-75VA-DW-T13166-1**



12345-wizard.com

General Data

Brand: Prototype Transformer Corporation (PTC) (USA)

Model: T-13166-1

Input: 230~115Vac 50~60Hz (split)

Output: 28V +21V

Power: 75VA (estimated)

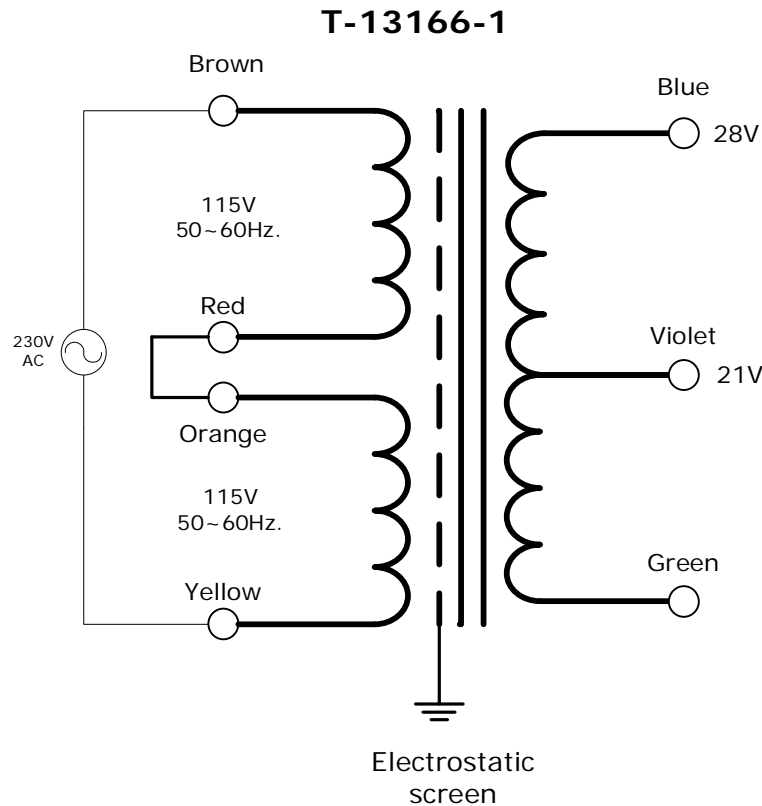
Size: 85x75x70mm

Weight: 1.83kg

Fixing: 4 x M5 holes @ 63 x 57mm centres (nominal)

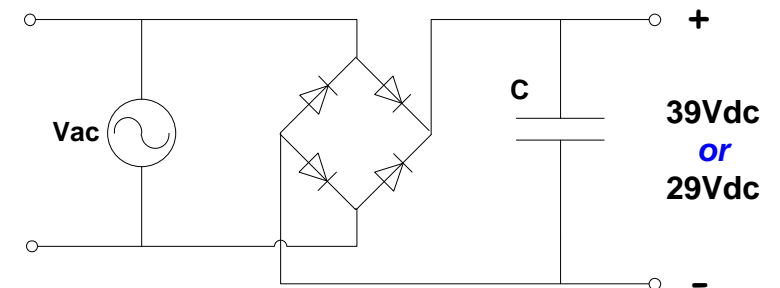
Condition: as new refurbished item typically as represented in images.

Comments: 5950-01-328-0784



NOTICE – the information on this page is not guaranteed for accuracy – CASA accepts no responsibility (neither expressed nor implied) for any errors or the consequence therefrom.

Optional Rectifier Assembly



Basic Un-Regulated DC PSU – Quick Calculator

$$C = (I \times 80,000) / V_{dc}$$
$$(2.1 \times 80,000) / 39 \sim 4,460\mu F$$

or

$$(2.5 \times 80,000) / 29 \sim 7,140\mu F$$

C = Capacitor in microFarads
I = Current (output) in Amps
Vdc = Volts (output)

P = Power of load (or transformer) in Watts (VoltAmps)

Vac = input Volts from transformer

Vdc = Vac x 1.4 (using a full-bridge rectifier)

Two or more identical transformers may be series-parallel arranged for higher currents and/or voltages (phasing observed)

NOTE – these approximations exclude copper losses etc. in the transformer and external wiring