

Mains Transformer



<http://www.casa.co.nz>

Edition: 15/09/2011

Type: **29V~10V-726VA-DW-25780594**

Stock #
350

2578-0594



12345-wzaz.com

General Data

Brand: Warner Electric Ltd. (USA)

Model: TD143A1P1

OEM: 2578-0594 (Burroughs)
2801-3977

Input: 240~100Vac 50~60Hz
(tapped)

Output: 29V @ 12.8A, 18V @ 5.4A,
15V @ 4.6A, 11V @ 0.33A, 10V @
16.3A, 180V @ 120mA.

Power: 726VA

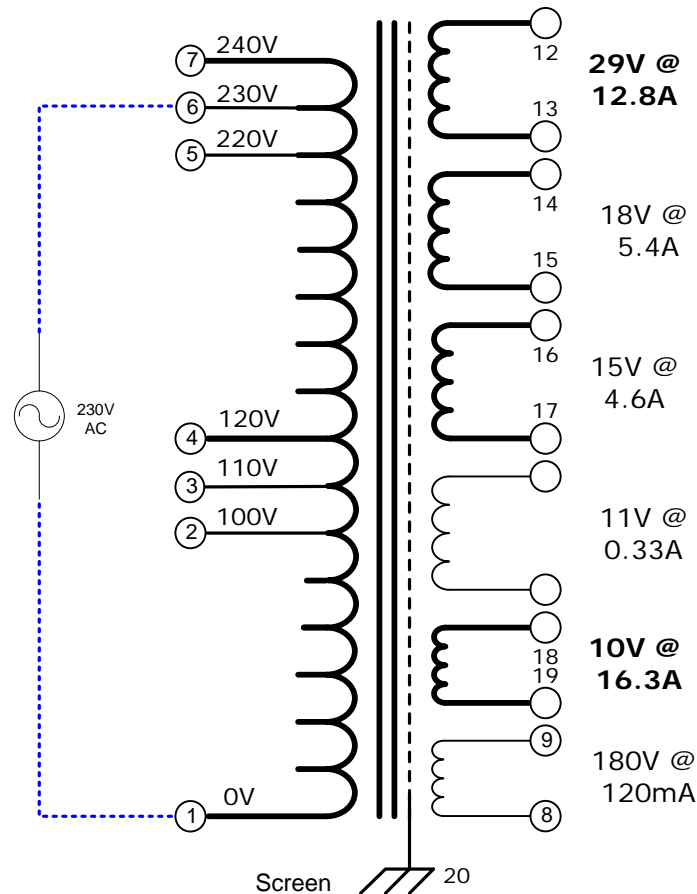
Size: 145 x 140 x 166 mm

Weight: 12.4kg

Fixing: 4 x 7mm slots @ 100 x 89
matrix on 4 sides

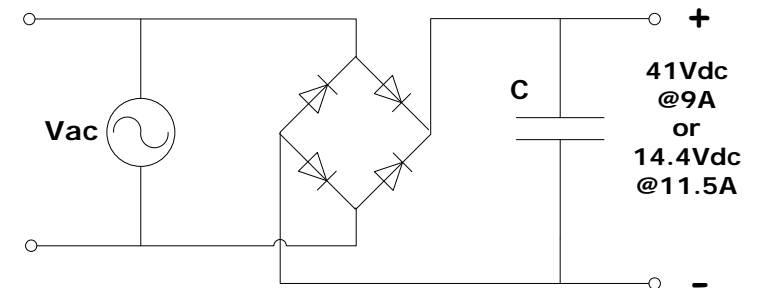
Condition: Used, as recovered from
telecommunications equipment.

Comments: primary windings may
be connected for 100 to 240 Volt
input.



NOTICE – the information on this page is not guaranteed for accuracy – CASA accepts no responsibility (expressed or implied) for any errors or the consequence therefrom.

Optional Rectifier Assembly



Basic Un-Regulated DC PSU – Quick Calculator

$$C = (I \times 80,000) / V_{dc}$$

$$(9.05 \times 80,000) / 41 = 17,600\mu F$$

or

$$(8.4 \times 80,000) / 14.4 = 64,000\mu F$$

C = Capacitor in microFarads
I = Current (output) in Amps
Vdc = Volts (output)

P = Power of load (or transformer) in Watts (VoltAmps)
Vac = input Volts from transformer
Vdc = Vac x 1.4 (using a full-bridge rectifier)

Two or more identical transformers may be series-parallel arranged for higher currents and/or voltages (phasing observed)

NOTE – these approximations exclude copper losses etc. in the transformer and external wiring