

# Mains Transformer



<http://www.casa.co.nz>

Edition: 7/09/2011

Type: **30V-2VA-DW-D4572/1**

Stock #



12345-wizard.com

## General Data

**Brand:** Astec (NZ?)

**Model:** D4572/1

**Input:** 230Vac 50Hz (not tapped)

**Output:** 30V @ 0.07A

**Power:** 2VA (estimated)

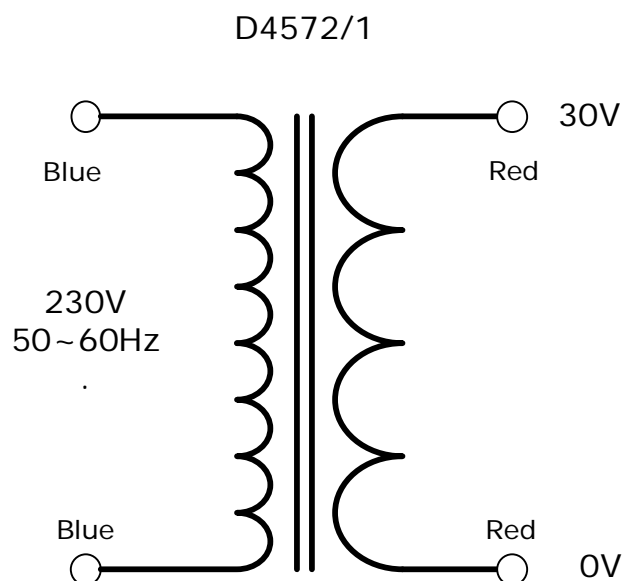
**Size:** 46x28x38mm (plus feet)

**Weight:** 0.18kg

**Fixing:** 2 x 3mm holes @ 53mm centres (nominal)

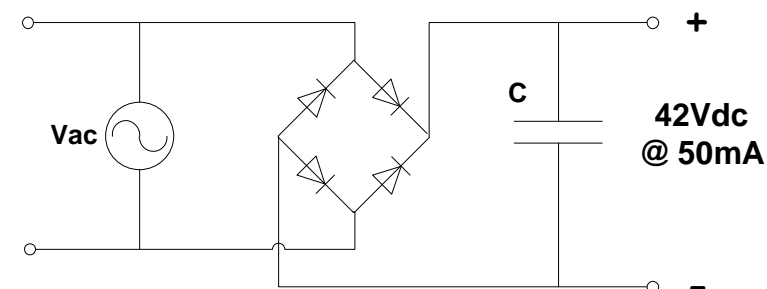
**Condition:** NEW#

**Comments:**



**NOTICE** – the information on this page is not guaranteed for accuracy – CASA accepts no responsibility (expressed or implied) for any errors or the consequence therefrom.

## Optional Rectifier Assembly



## Basic Un-Regulated DC PSU – Quick Calculator

$$C = (I \times 80,000) / V_{dc}$$
$$(0.05 \times 80,000) / 42 = \sim 90\mu F$$

C = Capacitor in microFarads  
I = Current (output) in Amps  
Vdc = Volts (output)

P = Power of load (or transformer) in Watts (VoltAmps)  
Vac = input Volts from transformer  
Vdc = Vac x 1.4 (using a full-bridge rectifier)

Two or more identical transformers may be series-parallel arranged for higher currents and/or voltages (phasing observed)

NOTE – these approximations exclude copper losses etc. in the transformer and external wiring